



Chipsmall Limited consists of a professional team with an average of over 10 year of expertise in the distribution of electronic components. Based in Hongkong, we have already established firm and mutual-benefit business relationships with customers from,Europe,America and south Asia,supplying obsolete and hard-to-find components to meet their specific needs.

With the principle of “Quality Parts,Customers Priority,Honest Operation,and Considerate Service”,our business mainly focus on the distribution of electronic components. Line cards we deal with include Microchip,ALPS,ROHM,Xilinx,Pulse,ON,Everlight and Freescale. Main products comprise IC,Modules,Potentiometer,IC Socket,Relay,Connector.Our parts cover such applications as commercial,industrial, and automotives areas.

We are looking forward to setting up business relationship with you and hope to provide you with the best service and solution. Let us make a better world for our industry!



Contact us

Tel: +86-755-8981 8866 Fax: +86-755-8427 6832

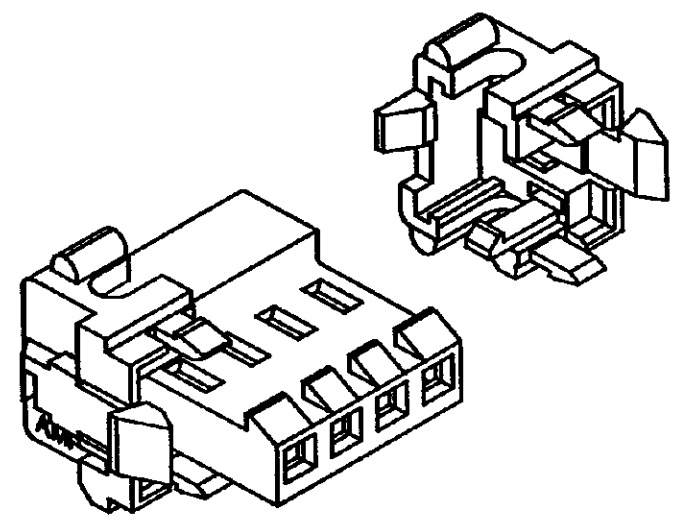
Email & Skype: info@chipsmall.com Web: www.chipsmall.com

Address: A1208, Overseas Decoration Building, #122 Zhenhua RD., Futian, Shenzhen, China

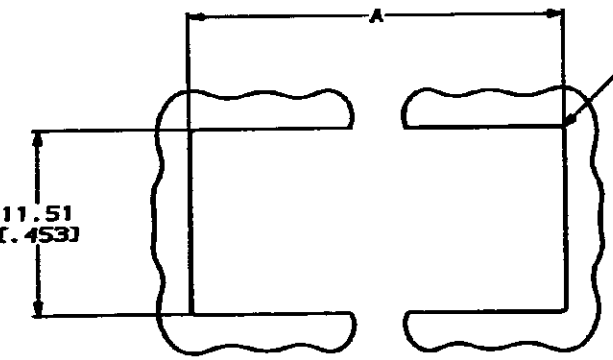


DRAWING MADE IN THIRD ANGLE PROJECTION
 THIS DRAWING IS UNPUBLISHED. RELEASED FOR PUBLICATION
 COPYRIGHT 1980 BY AMP INCORPORATED. ALL DIMENSIONAL UNITS ARE IN INCHES.

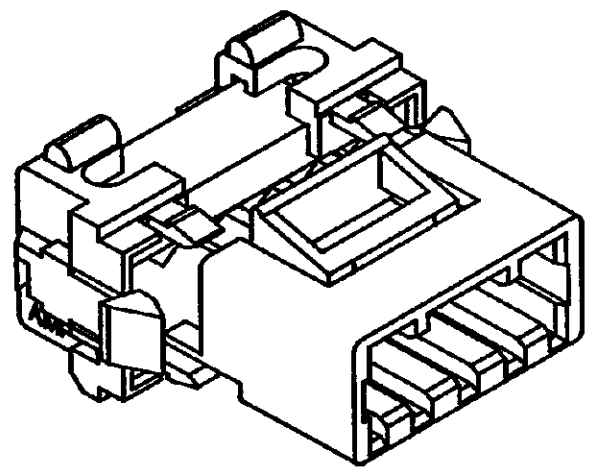
REV. NO.		DATE		DESCRIPTION	
CH	54			6	REV AND REDIN PER ECN CH-3503



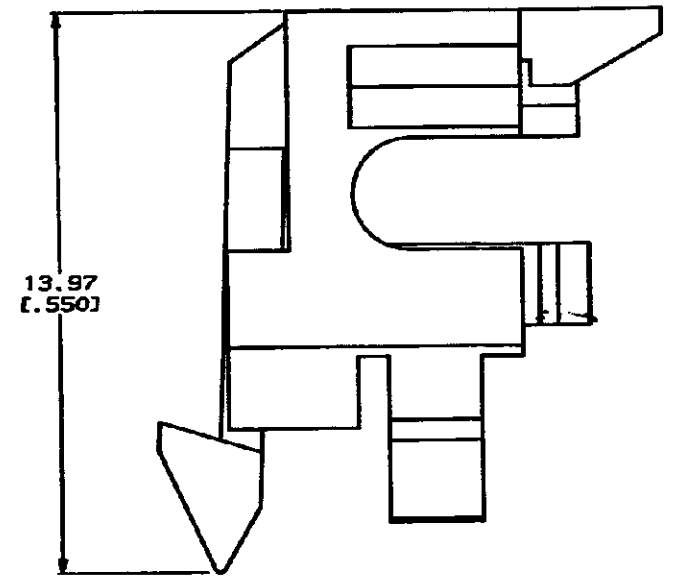
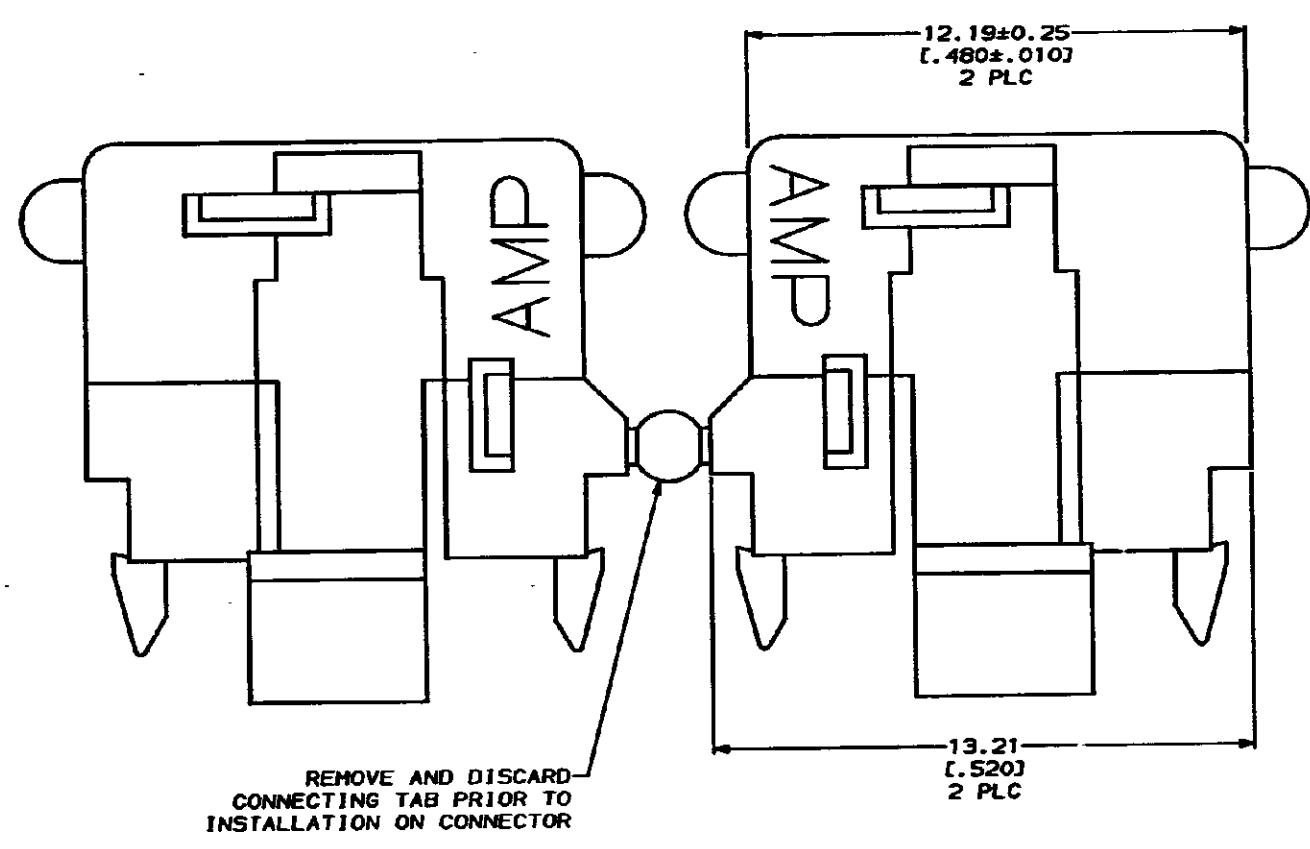
MTA 156 WIRE TO POST CONNECTOR WITH END CAPS INSTALLED
 (RECOMMENDED APPLICATION)



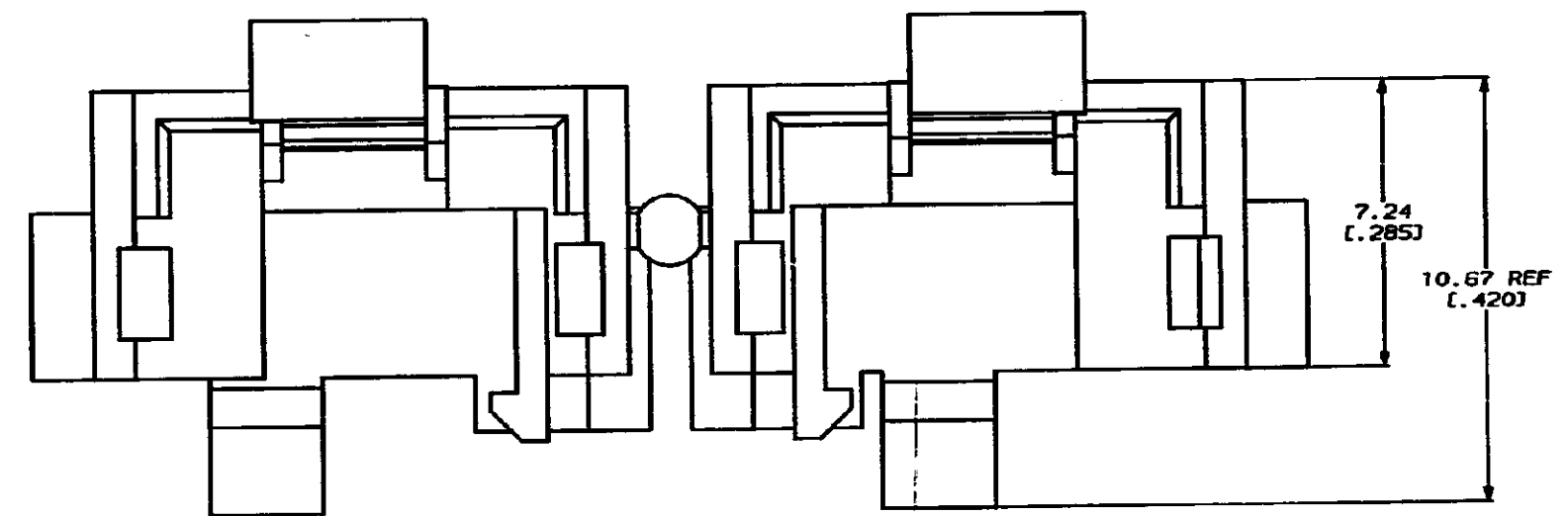
RECOMMENDED PANEL CUTOUT
 PANEL THICKNESS ± 1.70 (.067) MAX
 SCALE 4:1



MTA 156 POSTED CONNECTOR WITH END CAPS INSTALLED
 (ALTERNATE APPLICATION)



1. DIMENSIONS IN BRACKETS
 ARE IN INCHES.



	12 POSITION	24 POSITION	101.90 [4.012]
	54.36 [2.140]		
	9 POSITION		
	42.47 [1.672]		
	6 POSITION		
	30.58 [1.204]		
	4 POSITION	15 POSITION	66.24 [2.608]
	22.66 [.892]		
	3 POSITION		
	18.69 [.736]		
CONNECTOR SIZE	A	CONNECTOR SIZE	A

METRIC

DO NOT SCALE PRINT. UNLESS SPECIFIED DIMENSIONS IN MM (INCHES) TOLERANCES ON: 2 PLC DEC ± .013 (.005) 3 PLC DEC ± .013 (.005) ANGLES ± .5		DATE: 8-27-91 CHK: [Signature] APPD: [Signature] JAPPD: [Signature]	641440-1 PART NO
MATERIAL: NYLON, UL 94V-2 BLACK	PRODUCT SPEC: -	NAME: AMP Incorporated, Harrisburg, PA 17105-3000	
FINISH: -	APPLICATION SPEC: -	END CAP, PANEL MOUNTING, MTA 156	
WEIGHT: -	SCALE: 10:1	SIZE: D CASE CODE: 00779 DRAWING NO: 641440	SHEET: 1 OF 1

CUSTOMER DRAWING