



Chipsmall Limited consists of a professional team with an average of over 10 year of expertise in the distribution of electronic components. Based in Hongkong, we have already established firm and mutual-benefit business relationships with customers from,Europe,America and south Asia,supplying obsolete and hard-to-find components to meet their specific needs.

With the principle of “Quality Parts,Customers Priority,Honest Operation,and Considerate Service”,our business mainly focus on the distribution of electronic components. Line cards we deal with include Microchip,ALPS,ROHM,Xilinx,Pulse,ON,Everlight and Freescale. Main products comprise IC,Modules,Potentiometer,IC Socket,Relay,Connector.Our parts cover such applications as commercial,industrial, and automotives areas.

We are looking forward to setting up business relationship with you and hope to provide you with the best service and solution. Let us make a better world for our industry!



Contact us

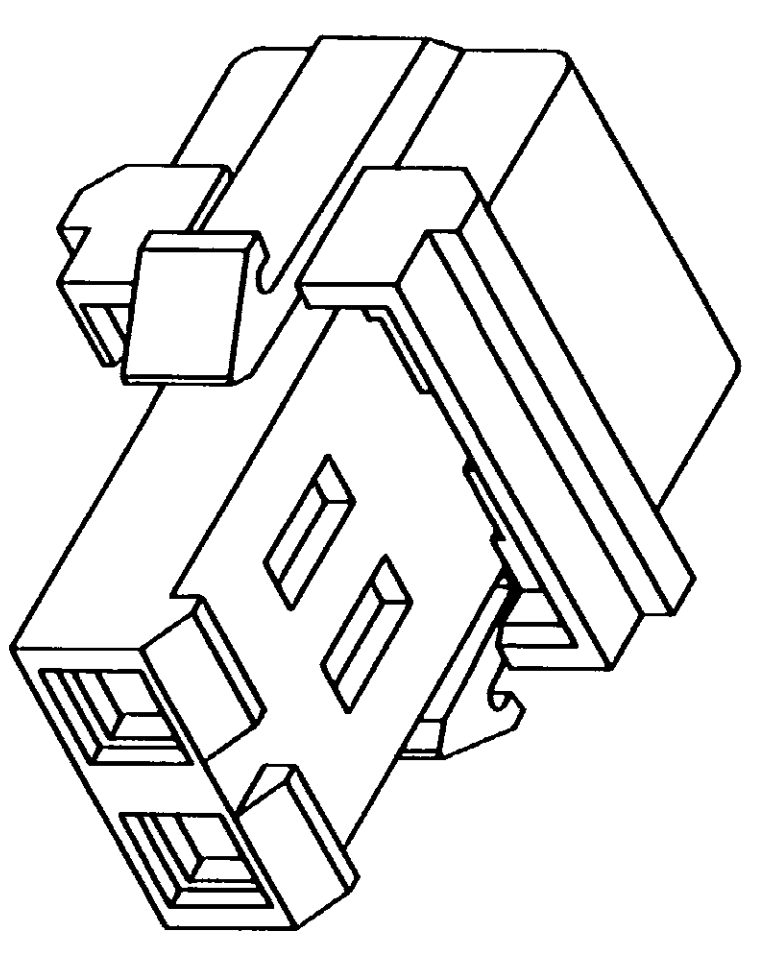
Tel: +86-755-8981 8866 Fax: +86-755-8427 6832

Email & Skype: info@chipsmall.com Web: www.chipsmall.com

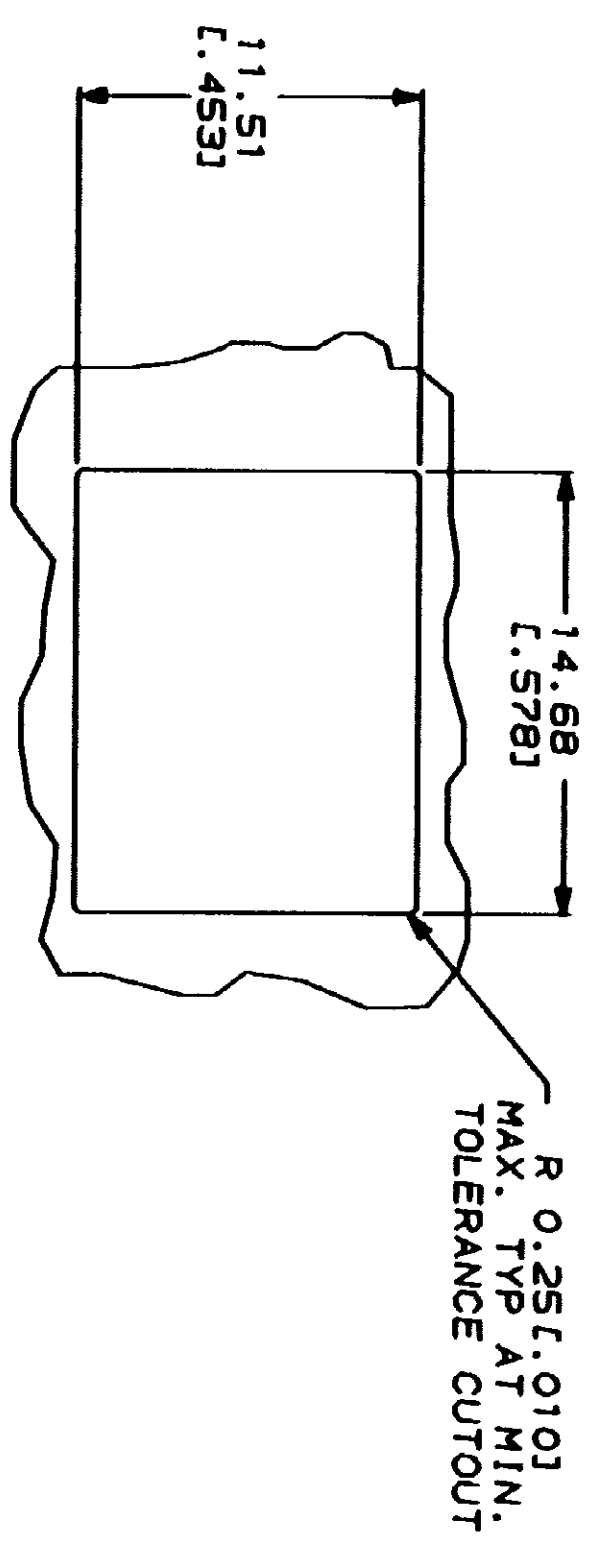
Address: A1208, Overseas Decoration Building, #122 Zhenhua RD., Futian, Shenzhen, China



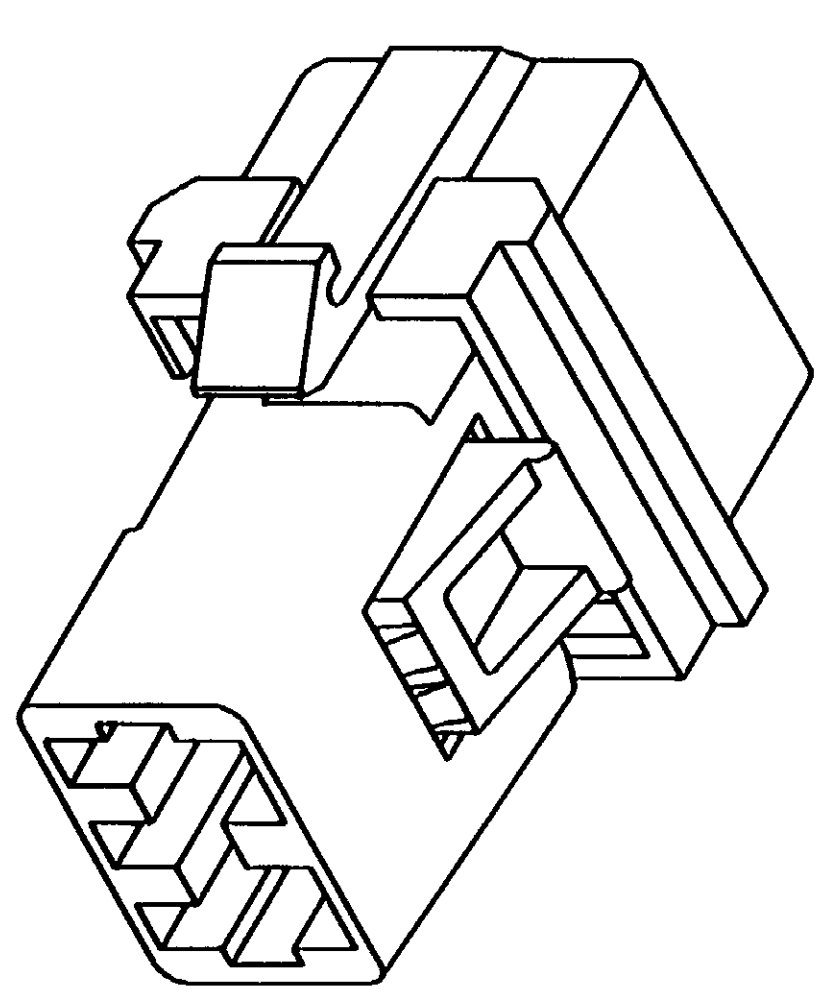
DETAILS MADE IN THIS MANUFACTURING PROCESS
 THIS DRAWING IS UNCLASSIFIED
 BY AMP INCORPORATED, ALL INTERNATIONAL RIGHTS RESERVED.



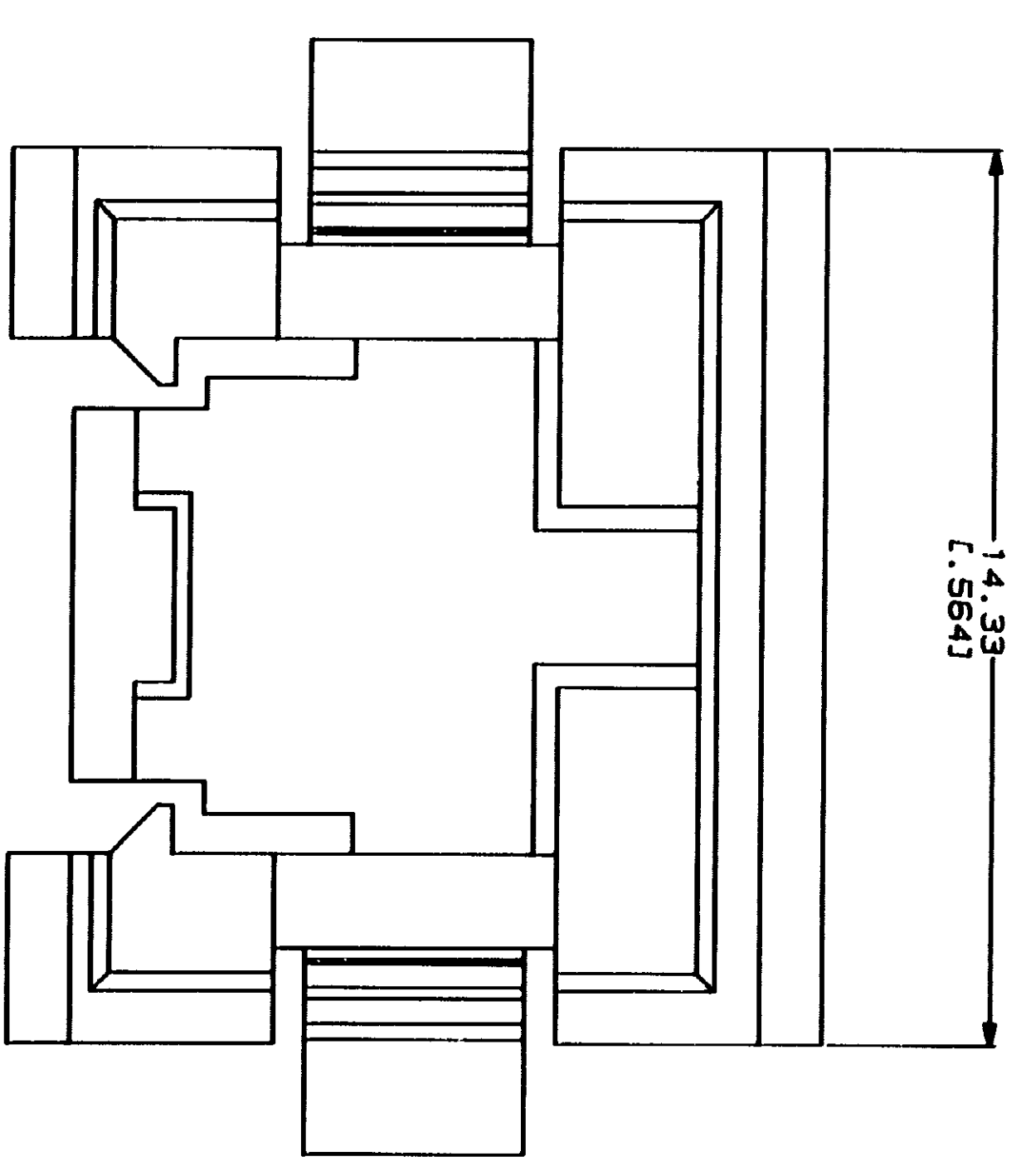
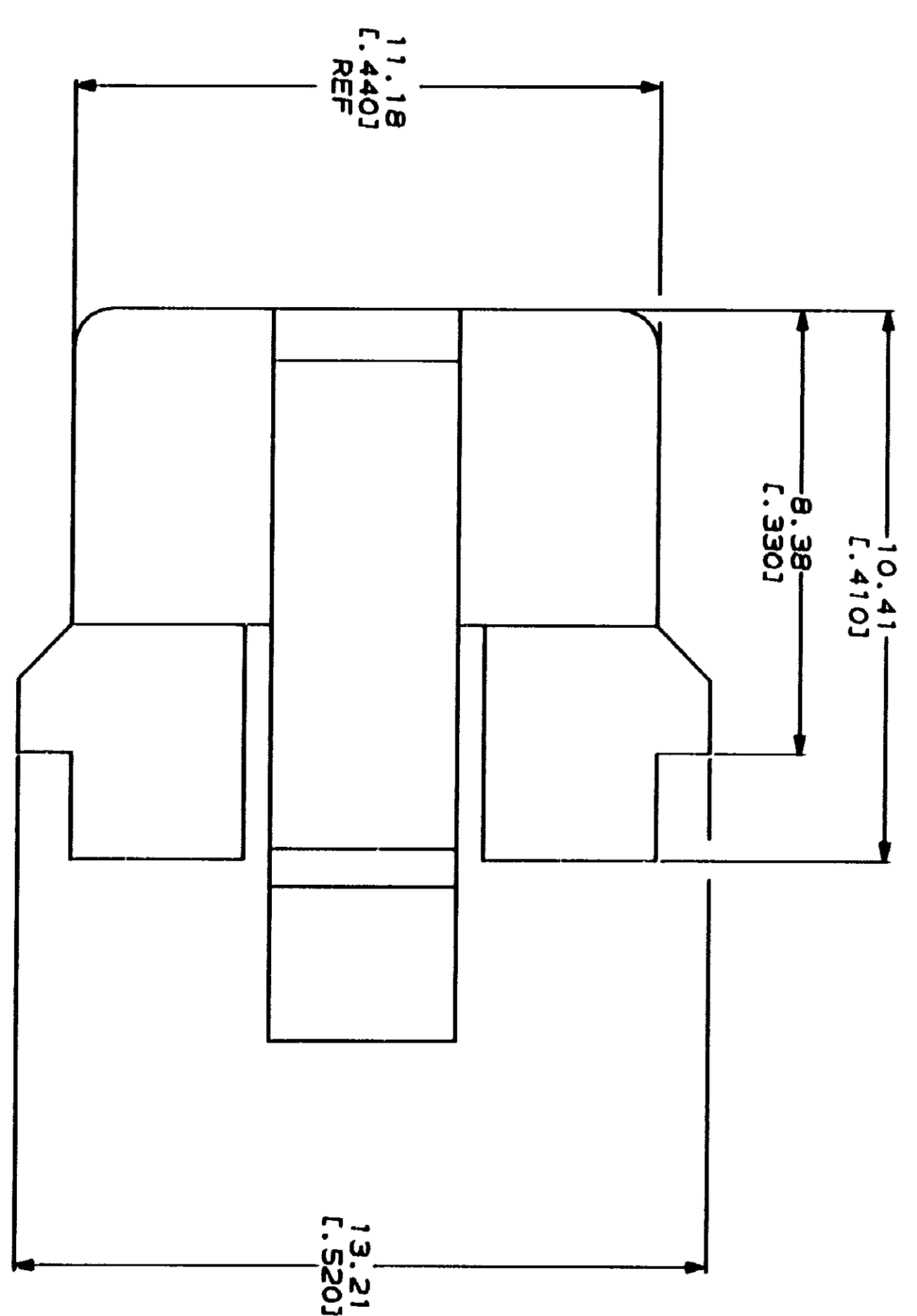
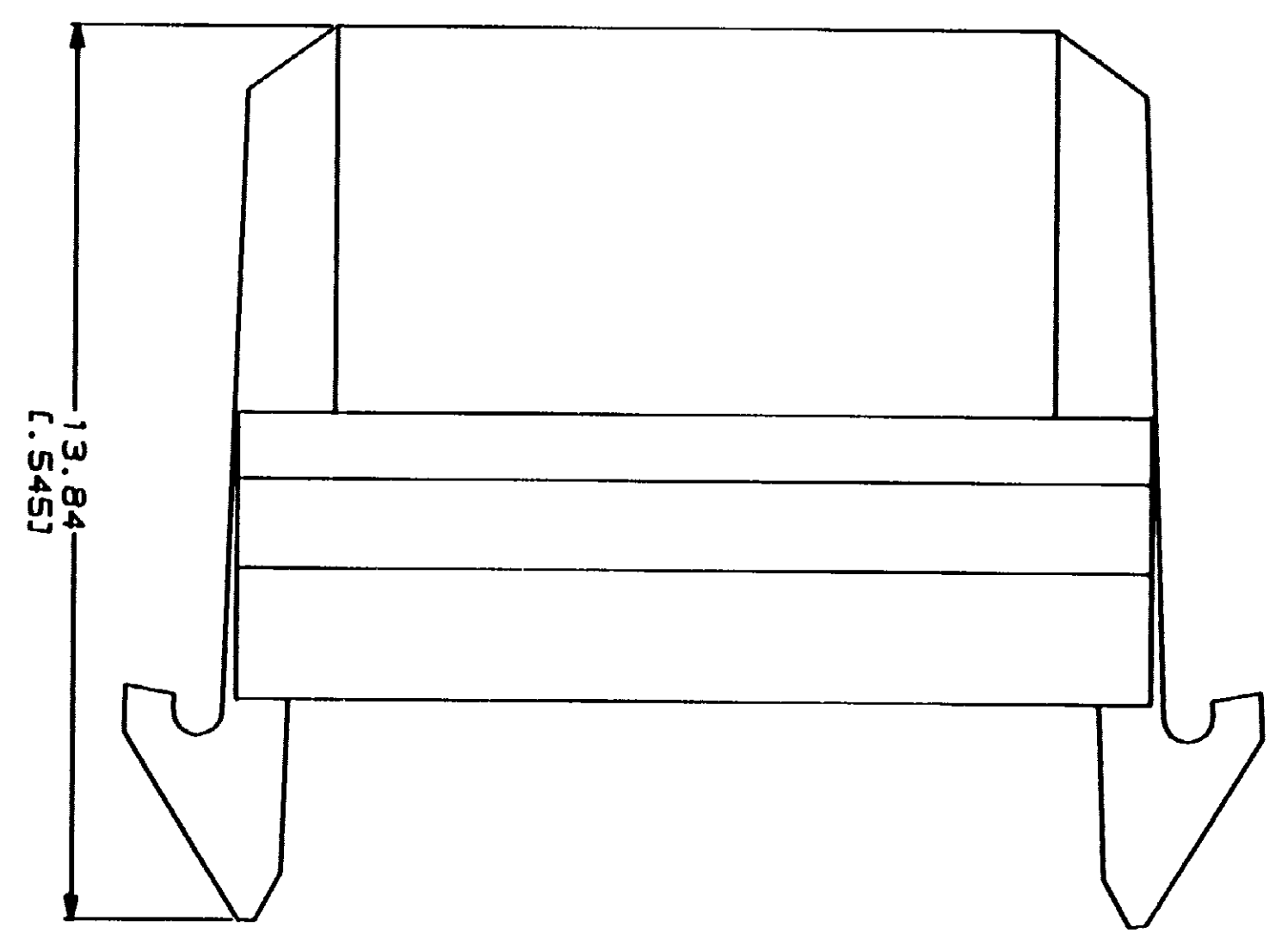
MTA 156 WIRE TO POST CONNECTOR WITH END CAP INSTALLED
 (RECOMMENDED APPLICATION)



PANEL THICKNESS = 1.57 (L.062)
 RECOMMENDED PANEL CUTOUT

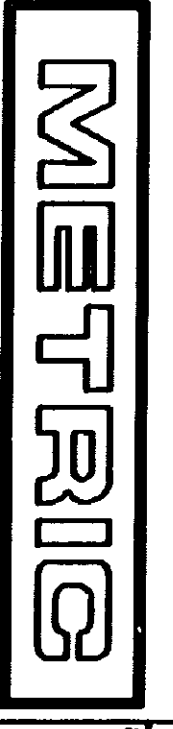


MTA 156 POSTED CONNECTOR WITH END CAP INSTALLED
 (ALTERNATE APPLICATION)



1. DIMENSIONS IN BRACKETS ARE IN INCHES.

REV	DATE	BY	APP'D	REVISIONS
6	REVISED PER EC 0730-0030-94			
5				
4				
3				
2				
1				



DO NOT SCALE PRINT. DIMENSIONS SPECIFIED IN MILLIMETERS (DIMENSIONS IN INCHES) TOLERANCES IN MILLIMETERS (DIMENSIONS IN INCHES)		OR S-12-83 DR. K. SILVER CHK. R. SHINE		PART NO. 641533-1	
3 P.C. DEC. ± 0.131 (0.005)	1.000	0.125	0.125	VALUE	AMP AMP Incorporated Horseshoe, PA 17105-3608
MATERIAL	1.000	1.000	1.000	END CAP, PANEL MOUNTING, 2 POSITION, POSTED CONNECTOR, MTA-156	
FINISH	1.000	1.000	1.000	CONNECTION SPEC	
NYLON, 94V-2 RATED, BLACK	1.000	1.000	1.000	SIZE	641533
	1.000	1.000	1.000	SCALE	10:1
	1.000	1.000	1.000	SHEET	1 OF 1

CUSTOMER DRAWING

DATE: 1994-15-01-10
 APP'D: [Signature]
 A/C BUSINESS GROUP, 2323 177-34 LARRY H. SMITH