



Chipsmall Limited consists of a professional team with an average of over 10 year of expertise in the distribution of electronic components. Based in Hongkong, we have already established firm and mutual-benefit business relationships with customers from,Europe,America and south Asia,supplying obsolete and hard-to-find components to meet their specific needs.

With the principle of “Quality Parts,Customers Priority,Honest Operation,and Considerate Service”,our business mainly focus on the distribution of electronic components. Line cards we deal with include Microchip,ALPS,ROHM,Xilinx,Pulse,ON,Everlight and Freescale. Main products comprise IC,Modules,Potentiometer,IC Socket,Relay,Connector.Our parts cover such applications as commercial,industrial, and automotives areas.

We are looking forward to setting up business relationship with you and hope to provide you with the best service and solution. Let us make a better world for our industry!



Contact us

Tel: +86-755-8981 8866 Fax: +86-755-8427 6832

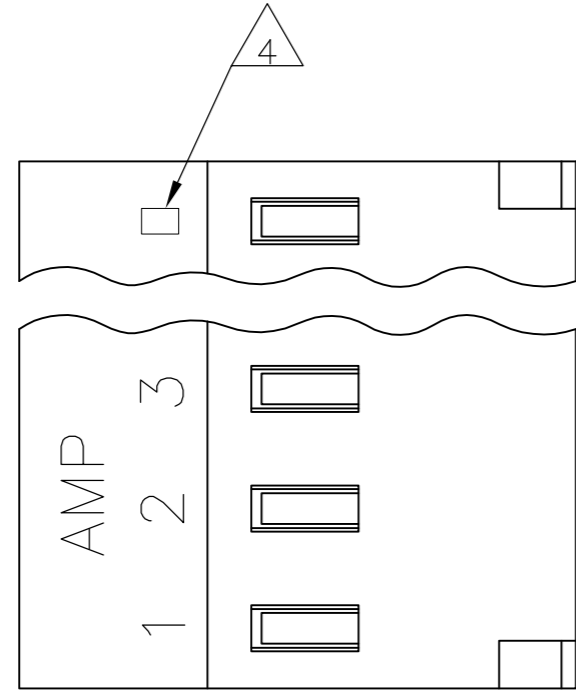
Email & Skype: info@chipsmall.com Web: www.chipsmall.com

Address: A1208, Overseas Decoration Building, #122 Zhenhua RD., Futian, Shenzhen, China

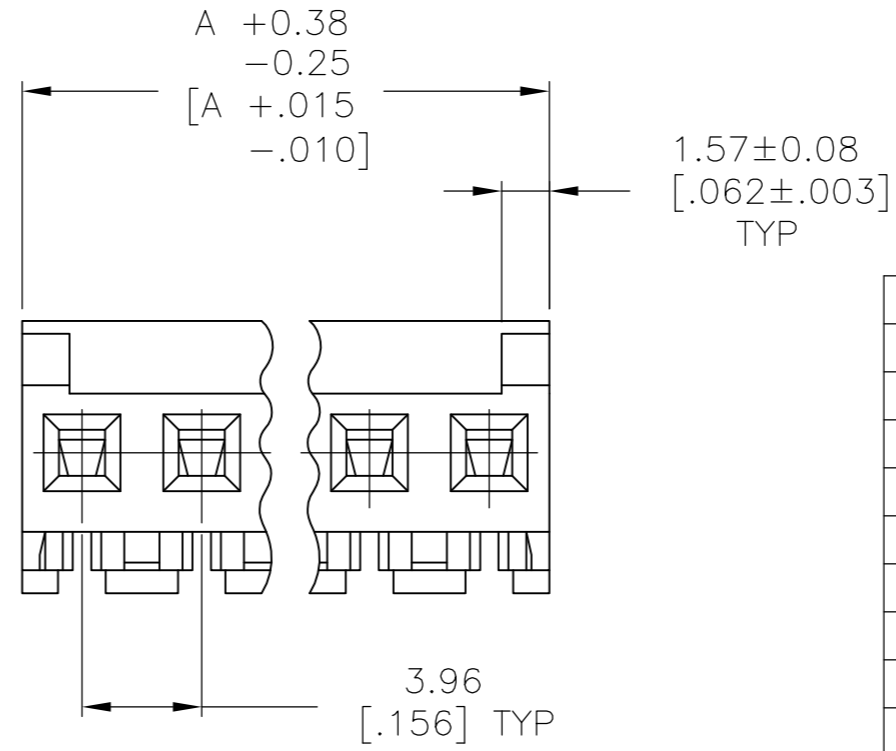
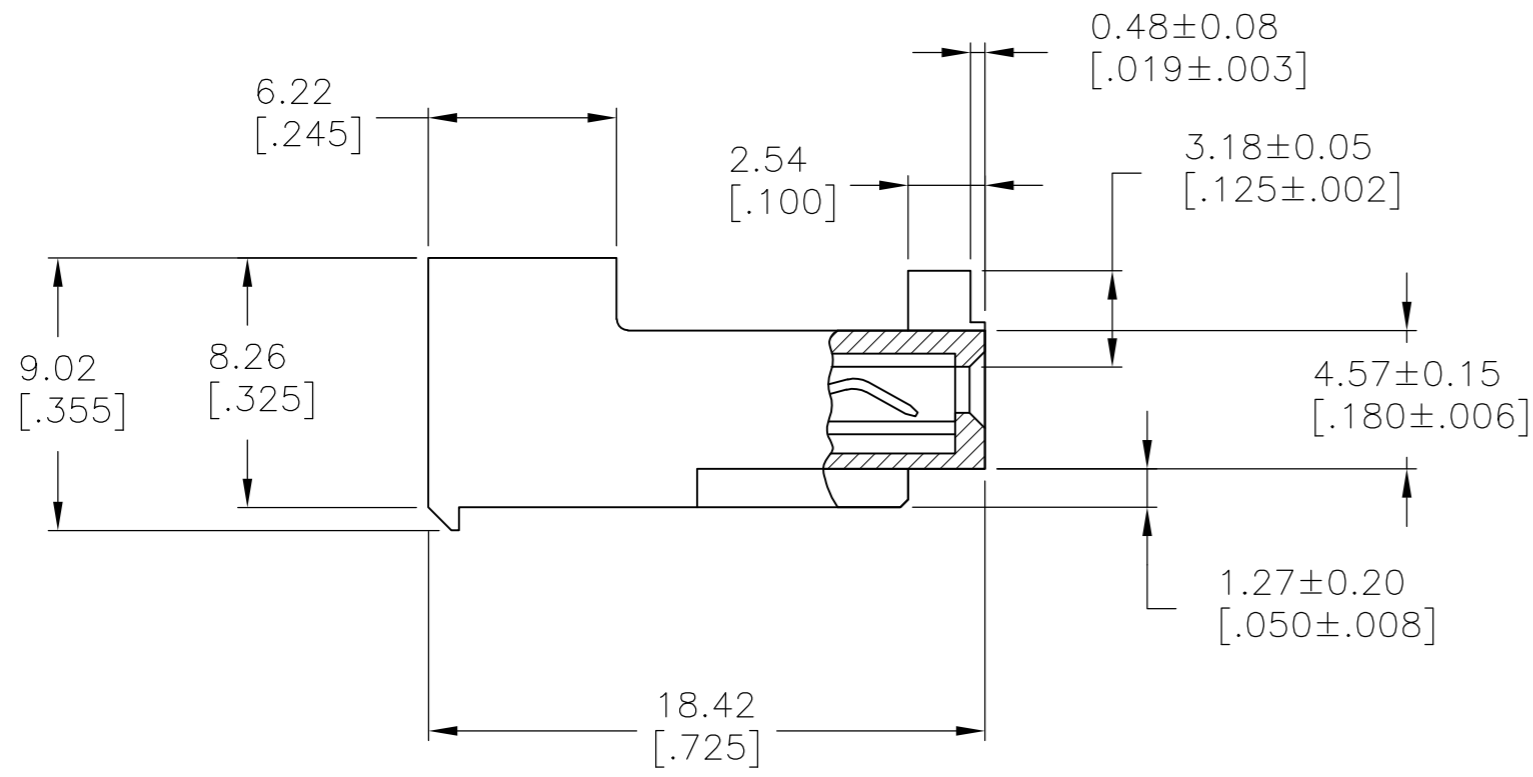


THIS DRAWING IS UNPUBLISHED. RELEASED FOR PUBLICATION
© COPYRIGHT BY TYCO ELECTRONICS CORPORATION. ALL RIGHTS RESERVED.

LOC		DIST		REVISIONS					
CM		00		P	LTR	DESCRIPTION	DATE	DWN	APVD
				D		ECO-07-012862	12JUN07	KW	DB
				D1		REVISED PER ECO-09-023313	09OCT09	KK	AEG



- 1 MATERIAL: CONNECTOR - NYLON UL94V-2 (WHITE).
CONTACTS - 0.30 [.012] THICK COPPER ALLOY BRIGHT-TIN LEAD 0.00203 [.000080] MIN THICK FOR CONTACTS 644464-2 THRU 1-644464-4 MATTE WHISKER MITIGATED TIN 0.00203 [.000080] MIN THICKNESS OVER NICKEL UNDERPLATE FOR 3-644464-2 THRU 4-644464-4
- 2. CONTACTS ACCEPT 24 AWG WIRE WITH 2.41[.095] MAX INSULATION DIAMETER.
- 3. CONTACTS MUST ACCEPT 1.14±0.03 [.045±.001] POST AND REMAIN LOCKED IN POSITION.
- 4 IDENTIFICATION NUMBER FOR LAST CIRCUIT MAY NOT APPEAR ON ALL ASSEMBLIES.
- 5. DIMENSIONS IN BRACKETS ARE IN INCHES.
- 6. HOUSING FEATURES ARE: CLOSED END WITHOUT LOCKING RAMP AND WITH POLARIZING TAB.
- 7 OBSOLETE PARTS: OBSOLETE CIS STREAMLINING PER D.RENAUD/D.SINISI



FINISH	DIM A	NO OF CIRCUITS	PART NO	
TIN	55.47 [2.184]	14	4-644464-4	
TIN	51.51 [2.028]	13	4-644464-3	
TIN	47.55 [1.872]	12	4-644464-2	
TIN	43.59 [1.716]	11	4-644464-1	
TIN	39.62 [1.560]	10	4-644464-0	
TIN	35.66 [1.404]	9	3-644464-9	
TIN	31.70 [1.248]	8	3-644464-8	
TIN	27.74 [1.092]	7	3-644464-7	
TIN	23.77 [.936]	6	3-644464-6	
TIN	19.81 [.780]	5	3-644464-5	
TIN	15.85 [.624]	4	3-644464-4	
TIN	11.89 [.468]	3	3-644464-3	
TIN	7.92 [.312]	2	3-644464-2	
7 SUPERSEDED	TIN-LEAD	55.47 [2.184]	14	1-644464-4
7 SUPERSEDED	TIN-LEAD	51.51 [2.028]	13	1-644464-3
	TIN-LEAD	47.55 [1.872]	12	1-644464-2
7 SUPERSEDED	TIN-LEAD	43.59 [1.716]	11	1-644464-1
7 SUPERSEDED	TIN-LEAD	39.62 [1.560]	10	1-644464-0
7 SUPERSEDED	TIN-LEAD	35.66 [1.404]	9	644464-9
7 SUPERSEDED	TIN-LEAD	31.70 [1.248]	8	644464-8
7 SUPERSEDED	TIN-LEAD	27.74 [1.092]	7	644464-7
7 SUPERSEDED	TIN-LEAD	23.77 [.936]	6	644464-6
	TIN-LEAD	19.81 [.780]	5	644464-5
7 SUPERSEDED	TIN-LEAD	15.85 [.624]	4	644464-4
7 SUPERSEDED	TIN-LEAD	11.89 [.468]	3	644464-3
	TIN-LEAD	7.92 [.312]	2	644464-2

- 7 SUPERSEDED
- 7 SUPERSEDED
- 7 SUPERSEDED
- 7 SUPERSEDED
- 7 SUPERSEDED
- 7 SUPERSEDED
- 7 SUPERSEDED
- 7 SUPERSEDED
- 7 SUPERSEDED
- 7 SUPERSEDED
- 7 SUPERSEDED
- 7 SUPERSEDED

THIS DRAWING IS A CONTROLLED DOCUMENT.

DWN B. LEWIS 12 FEB 91
CHK R. SWING 12 FEB 91
APVD D. CLARK 20 FEB 91

Tyco Electronics Corporation
Harrisburg, Pa 17105-3608

MTA-156 CONNECTOR ASSEMBLY,
24 AWG, STANDARD

SIZE: A2 CAGE CODE: 00779 DRAWING NO: C=644464 RESTRICTED TO: -

SCALE: 4:1 SHEET: 1 OF 1 REV: D1

CUSTOMER DRAWING

