



Chipsmall Limited consists of a professional team with an average of over 10 year of expertise in the distribution of electronic components. Based in Hongkong, we have already established firm and mutual-benefit business relationships with customers from,Europe,America and south Asia,supplying obsolete and hard-to-find components to meet their specific needs.

With the principle of “Quality Parts,Customers Priority,Honest Operation,and Considerate Service”,our business mainly focus on the distribution of electronic components. Line cards we deal with include Microchip,ALPS,ROHM,Xilinx,Pulse,ON,Everlight and Freescale. Main products comprise IC,Modules,Potentiometer,IC Socket,Relay,Connector.Our parts cover such applications as commercial,industrial, and automotives areas.

We are looking forward to setting up business relationship with you and hope to provide you with the best service and solution. Let us make a better world for our industry!



## Contact us

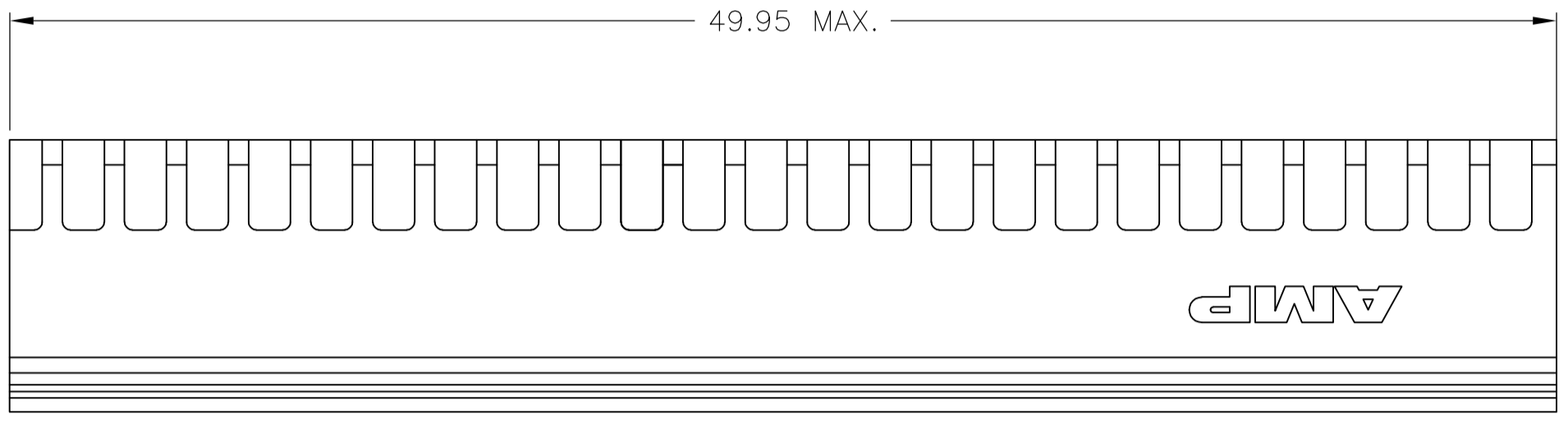
Tel: +86-755-8981 8866 Fax: +86-755-8427 6832

Email & Skype: info@chipsmall.com Web: www.chipsmall.com

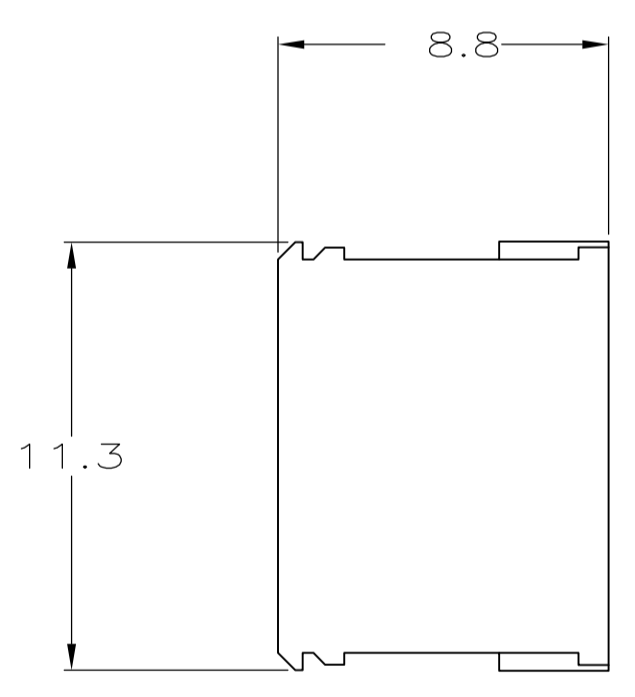
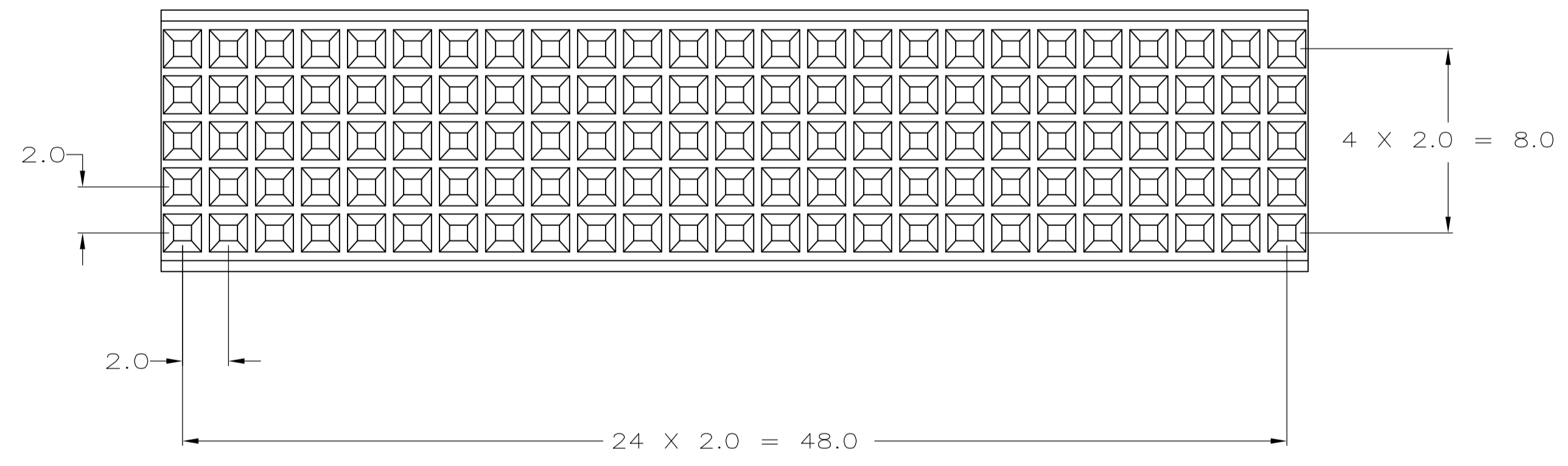
Address: A1208, Overseas Decoration Building, #122 Zhenhua RD., Futian, Shenzhen, China



LOC		DIST		REVISIONS			
AD	47	REV	DATE	BY	CHK	APP	REV
		0	28JAN97	JDL	RWE		
		A	13DEC11	SY	MQW		



△ MATERIAL: GLASS FILLED POLYESTER



646342-1  
PART NO

<small>THIS DRAWING IS A CONTROLLED DOCUMENT FOR AMP. REVISIONS SHOULD BE SUBJECT TO CHANGE AND THE CONTROLLING ENGINEERING ORGANIZATION SHOULD BE CONTACTED FOR THE LATEST REVISION.</small>		DWN	J. LOCONDRO	28JAN97
		CHK	R. WELICKER	28JAN97
		APP'D	D. B. SINISI	28JAN97
		NAME	R/A RECEPTACLE HOUSING	
		PRODUCT SPEC	125 POSITION, 5 ROW, TYPE B	
		APPLICATION SPEC	Z-PACK 2mm HM	
		SIZE	A1	00779
		WEIGHT	C-646342	
		CUSTOMER DRAWING	SCALE 5:1 SHEET 1 OF 1 REV A	