



Chipsmall Limited consists of a professional team with an average of over 10 year of expertise in the distribution of electronic components. Based in Hongkong, we have already established firm and mutual-benefit business relationships with customers from,Europe,America and south Asia,supplying obsolete and hard-to-find components to meet their specific needs.

With the principle of “Quality Parts,Customers Priority,Honest Operation,and Considerate Service”,our business mainly focus on the distribution of electronic components. Line cards we deal with include Microchip,ALPS,ROHM,Xilinx,Pulse,ON,Everlight and Freescale. Main products comprise IC,Modules,Potentiometer,IC Socket,Relay,Connector.Our parts cover such applications as commercial,industrial, and automotives areas.

We are looking forward to setting up business relationship with you and hope to provide you with the best service and solution. Let us make a better world for our industry!



Contact us

Tel: +86-755-8981 8866 Fax: +86-755-8427 6832

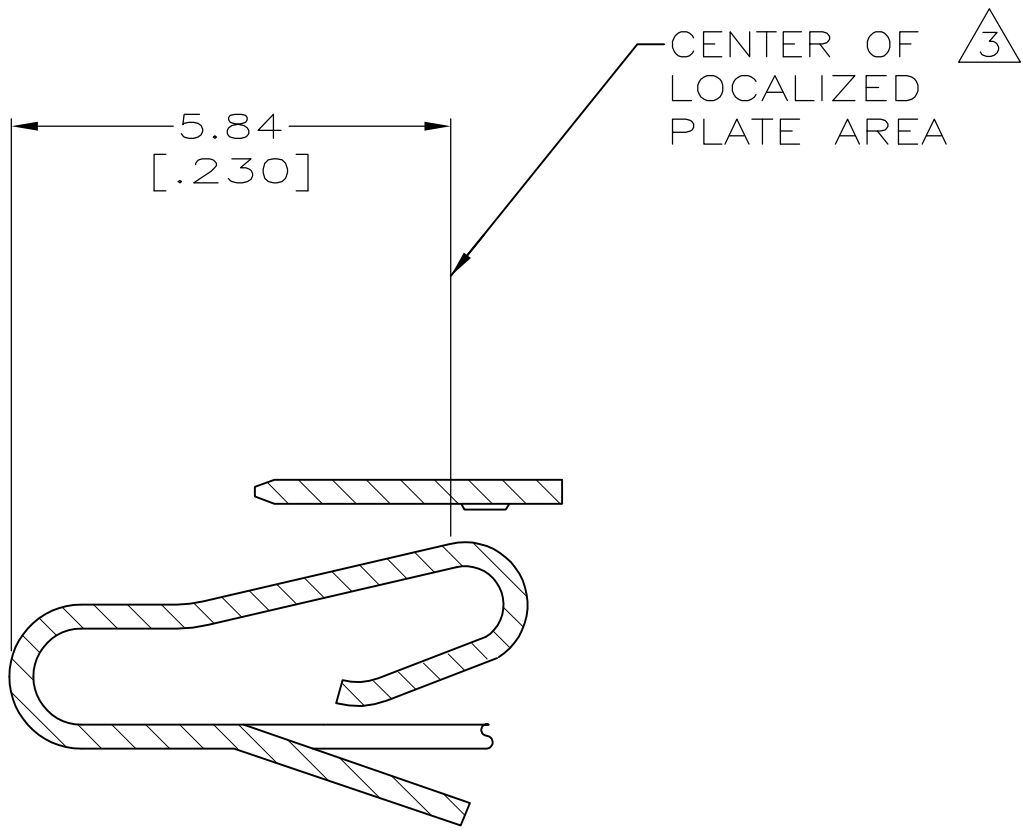
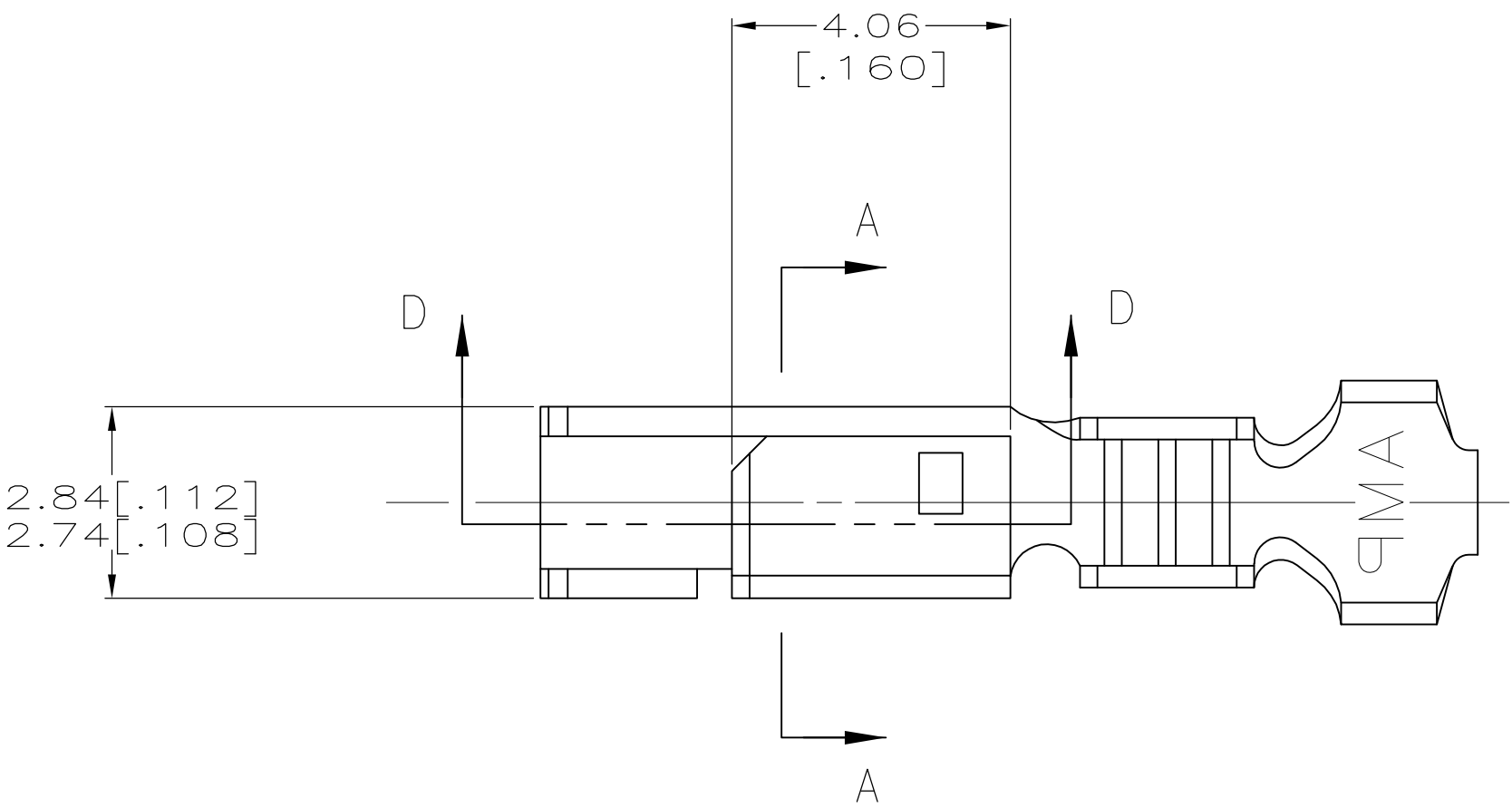
Email & Skype: info@chipsmall.com Web: www.chipsmall.com

Address: A1208, Overseas Decoration Building, #122 Zhenhua RD., Futian, Shenzhen, China

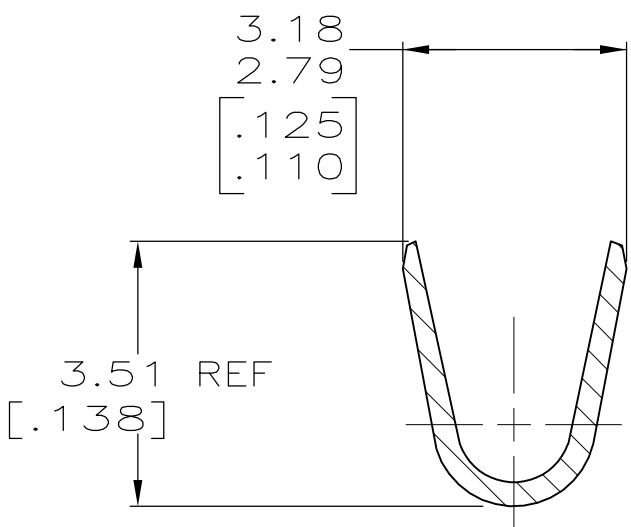
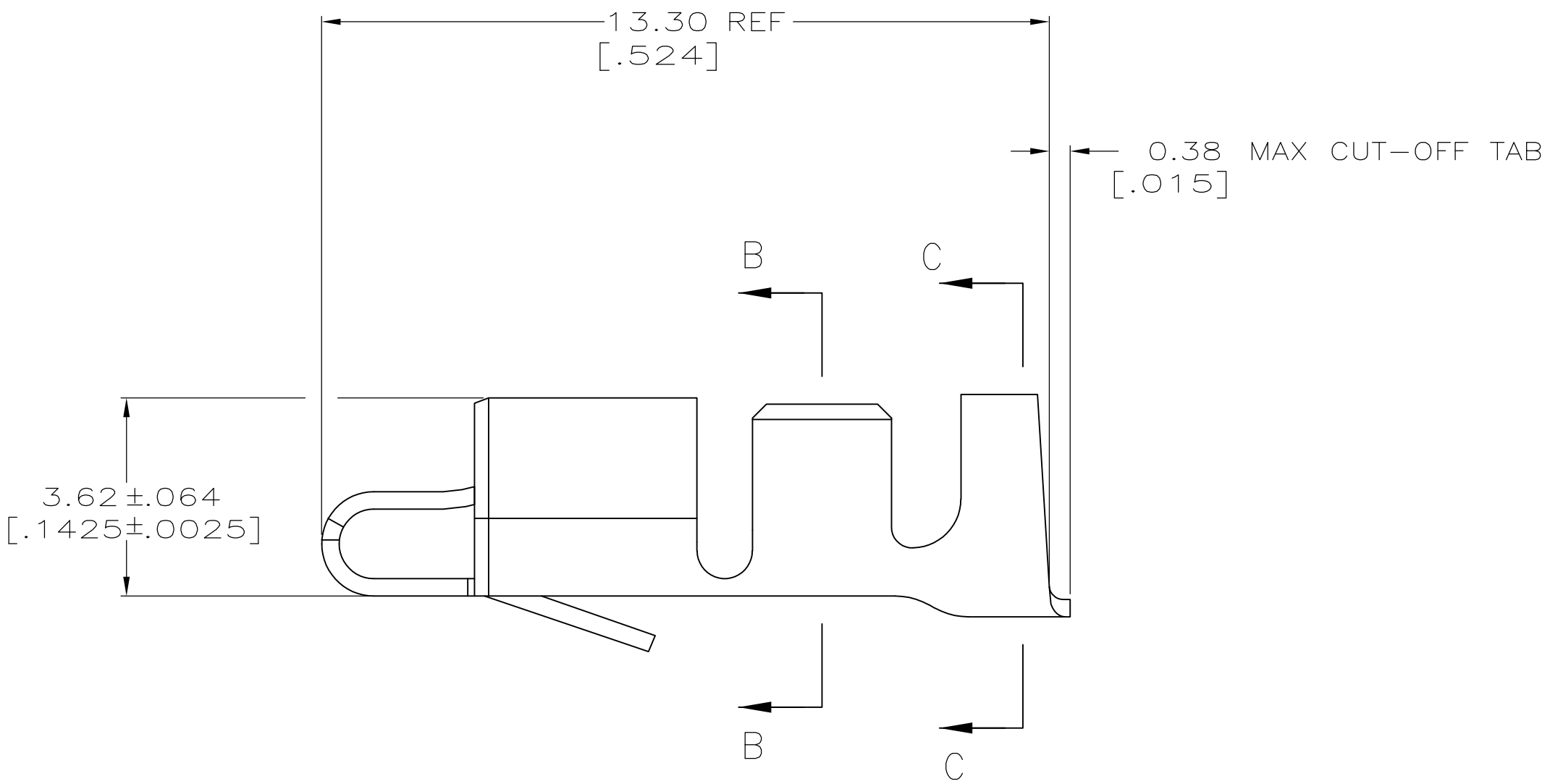


LOC	DIST	REVISIONS				
		P	LTR	DESCRIPTION	DATE	DWN APVD
CM	00	A		ECO-07-023735	09OCT07	KW SR

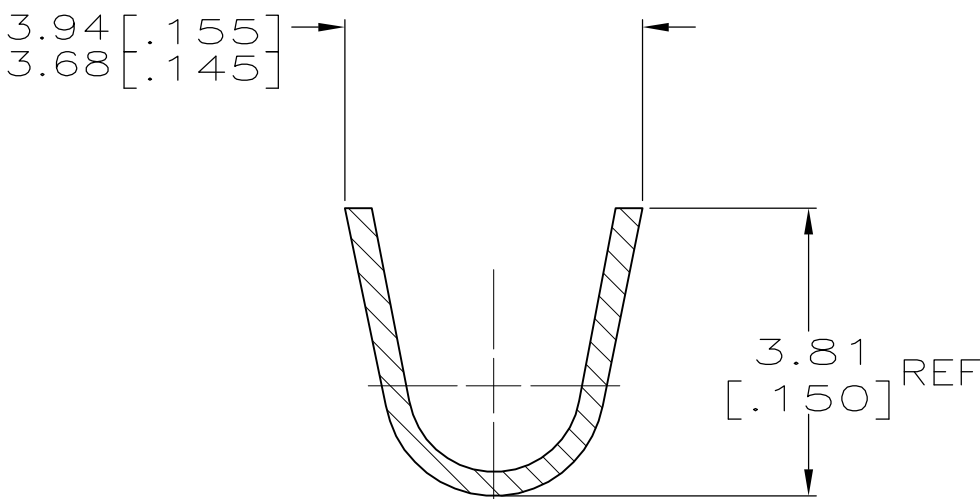
1. INSULATION RANGE: 1.78–2.84 [.070–.112]
WIRE RANGE: NOT TO EXCEED 2550–2800 CMA (1.29–1.42 mm²) (LIMITED 16 AWG RANGE).
- 2 0.00203 [.000080] MIN BRIGHT TIN–LEAD OVER
0.00127 [.000050] MIN NICKEL.
- 3 0.00076 [.000030] MIN THICK GOLD STRIPES IN
LOCALIZED PLATE AREA ON BEAM AND DIMPLE OVER
0.00127 [.000050] MIN THICK NICKEL OVER ENTIRE
CONTACT.
4. DIMENSIONS IN BRACKETS ARE IN INCHES.
5. FOR USE ONLY WITH LID STYLE HOUSING.
- 6 0.00203 [.000080] MIN BRIGHT TIN OVER
0.00127 [.000050] MIN NICKEL.



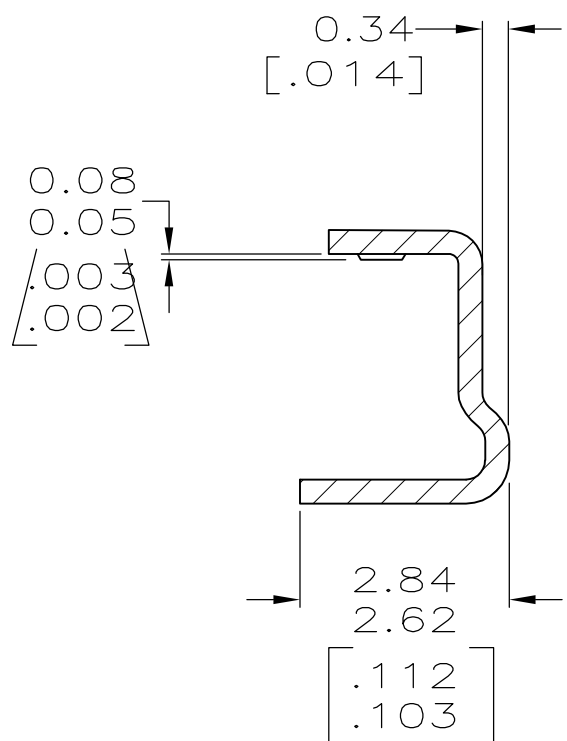
SECTION D–D



SECTION B–B




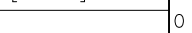
SECTION C–C



SECTION A–A
ROTATED 90° CCW

6	3–647485–1
3	647485–2
2	647485–1
FINISH	PART NUMBER

METRIC

THIS DRAWING IS A CONTROLLED DOCUMENT.		DWN K. WHITAKER 15-JAN-2001	 Tyco Electronics Corporation Harriburg, PA 17105-3608		
		CHK J. ELLIS 15-JAN-2001			
DIMENSIONS: mm [INCHES]	TOLERANCES UNLESS OTHERWISE SPECIFIED:	APVD J. ELLIS 15-JAN-2001	NAME		
			SL-156 HOODED RECEPTACLE, LARGE WIRE CONTACT, LOOSE PIECE		
	0. PLC ± - 1. PLC ± - 2. PLC ± - 3. PLC ± .005 4. PLC ± - ± - ANGLES	PRODUCT SPEC 108-1049	SIZE A1		
		APPLICATION SPEC 114-1021			
MATERIAL PH BRZ	FINISH SEE TABLE	WEIGHT -	CAGE CODE 00779		
		DRAWING NO 647485			
CUSTOMER DRAWING		SCALE 10:1		SHEET 1 OF 1	REV A