



Chipsmall Limited consists of a professional team with an average of over 10 year of expertise in the distribution of electronic components. Based in Hongkong, we have already established firm and mutual-benefit business relationships with customers from,Europe,America and south Asia,supplying obsolete and hard-to-find components to meet their specific needs.

With the principle of "Quality Parts,Customers Priority,Honest Operation,and Considerate Service",our business mainly focus on the distribution of electronic components. Line cards we deal with include Microchip,ALPS,ROHM,Xilinx,Pulse,ON,Everlight and Freescale. Main products comprise IC,Modules,Potentiometer,IC Socket,Relay,Connector.Our parts cover such applications as commercial,industrial, and automotives areas.

We are looking forward to setting up business relationship with you and hope to provide you with the best service and solution. Let us make a better world for our industry!



Contact us

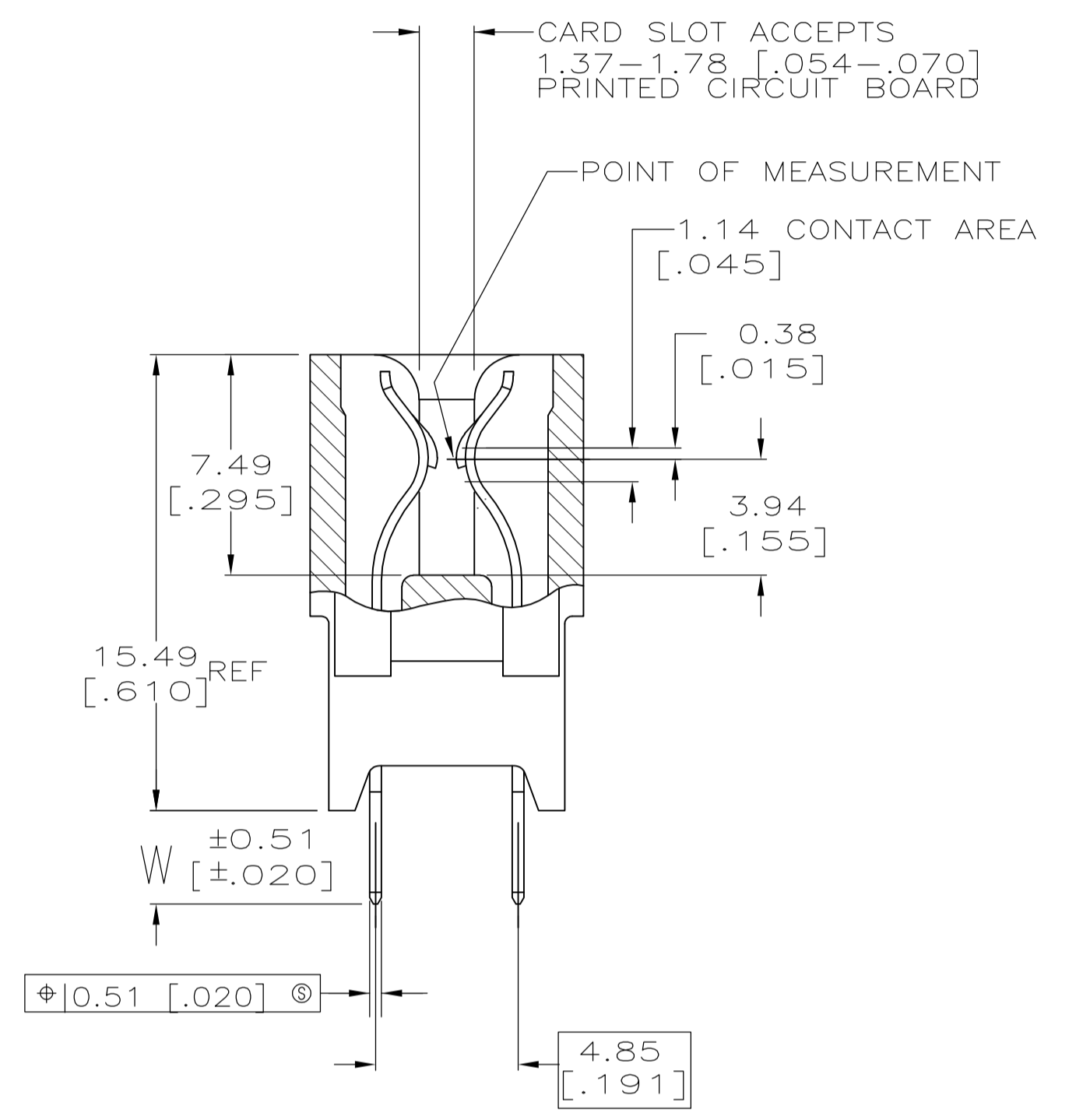
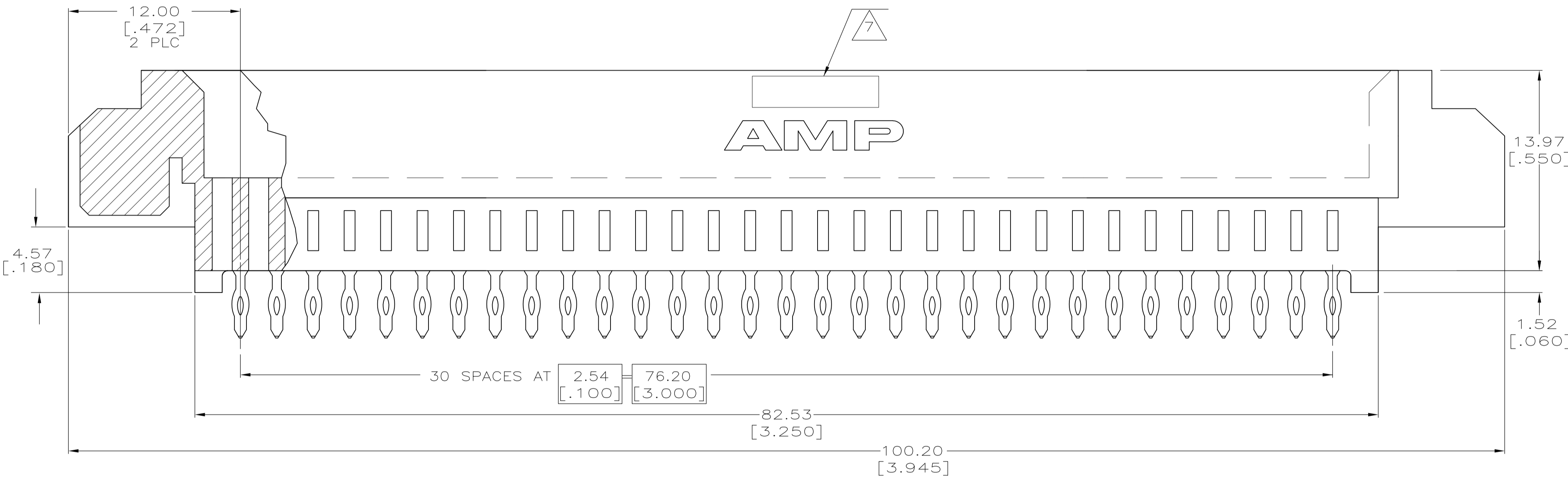
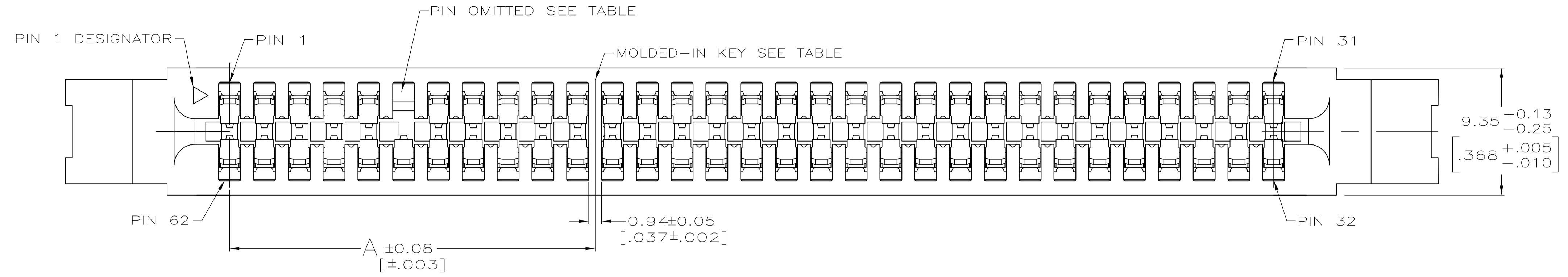
Tel: +86-755-8981 8866 Fax: +86-755-8427 6832

Email & Skype: info@chipsmall.com Web: www.chipsmall.com

Address: A1208, Overseas Decoration Building, #122 Zhenhua RD., Futian, Shenzhen, China



LOC	DIST	REVISIONS			
P	LTR	DESCRIPTION	DATE	DMN	APVD
D		REVISED PER ECO-08-014698	23JUN08	RG	AWF
D1		REVISED PER ECO-09-024927	10NOV09	KK	AEG



- 1 HOUSING: GLASS-FILLED POLYESTER, BLACK.
- 2 CONTACT: HIGH CONDUCTIVITY COPPER ALLOY.
- 3 NICKEL PLATE: 1.27µm[.000050] MIN - ALL OVER.
- 4 MATTE TIN PLATE: 2.54µm[.000100] MIN - SOLDER POSTS.
- 5 GOLD PLATE: 0.76µm[.000030] MIN - CONTACT AREA.
- 6 KEEP OUT ZONE APPLIES TO BOTH SIDES OF PC BOARD (FRONT AND BACK).
- 7 AMP PART NUMBER, DATE CODE AND CSA LOGO MARKED IN APPROXIMATE AREA SHOWN, EITHER SIDE.
- 8 DATUMS AND BASIC DIMENSIONS ESTABLISHED BY CUSTOMER.
- 9 4 OUNCE COPPER REQUIRED.
- 10 RETAINING CLIP: STAINLESS STEEL, NOT INCLUDED WITH CONNECTOR.

- 11. ELECTRICAL PERFORMANCE OF THIS CONNECTOR IS DIRECTLY RELATED TO THE VRM POWER MODULE BOARD DESIGN AND MAY BE AFFECTED BY CHANGES TO THAT DESIGN.
- 12. CONNECTOR PERFORMANCE IS BASED UPON INFORMATION FROM THE VRM 9.0 AND 9.1 MODULE BOARD DESIGN STANDARD.
- 13. CONNECTORS SHOWN ARE USED IN APPLICATIONS WITH VRM MODULES WEIGHING UP TO 6 OUNCES. ALTERNATIVE CONNECTOR AND LATCHING METHOD IS AVAILABLE FOR VRM MODULES WEIGHING 3 OUNCES AND LESS, CONSULT AMP ENGINEERING FOR ADDITIONAL INFORMATION.
- 14. ONE HOLE OMITTED FOR POLERIZATION, SEE TABLE FOR LOCATION.

15. RECOMMENDED FINISHED HOLE SIZES	TIN PLATED HOLE	φ 1.02±0.08 [φ .040±.003]
	GOLD PLATED HOLE	φ 1.07±0.05 [φ .042±.002]

16. OBSOLETE PARTS: OBSOLETE CIS STREAMLINING PER D.RENAUD/D.SINISI

13	OBSOLETE	4.75 [.187]	51.90 [2.043]	29.03 [1.140]	19	10	26.67 [1.050]	6	11,12	9.05,+12V	31	6489652-4	
13	OBSOLETE	3.18 [.125]	51.90 [2.043]	29.03 [1.140]	19	10	26.67 [1.050]	6	11,12	9.05,+12V	31	6489652-3	
13	16	OBSOLETE	3.18 [.125]	69.60 [2.740]	11.18 [.440]	26	3	8.89 [.350]	6	4,5	9.1,+48V	31	6489652-2
13			3.18 [.125]	49.28 [1.940]	31.50 [1.240]	18	11	29.21 [1.150]	6	12,13	9.1,+12V	31	6489652-1
			W	E	D	C	B	A	OMIT PIN AND HOLE	MOLDED KEY BETWEEN PINS	VRM DESIGNATION	NO OF DUAL POSN	PART NUMBER

THIS DRAWING IS A CONTROLLED DOCUMENT.

DIMENSIONS: mm [INCHES]

TOLERANCES UNLESS OTHERWISE SPECIFIED:

0 PLC	±	-
1 PLC	±	-
2 PLC	±	0.25 [.01]
3 PLC	±	0.13 [.005]
4 PLC	±	-

ANGLES: ± °

MATERIAL: 1 2 10

FINISH: 3 4 5

THIS DRAWING IS A CONTROLLED DOCUMENT.

AL FRANTUM 20 MAY 05

AL FRANTUM 20 MAY 05

AL FRANTUM

NAME: Tyco Electronics Corporation Harrisburg, Pa 17105-3608

PRODUCT SPEC

APPLICATION SPEC

SIZE: A1

WEIGHT: -

CAGE CODE: 00779

DRAWING NO: 6489652

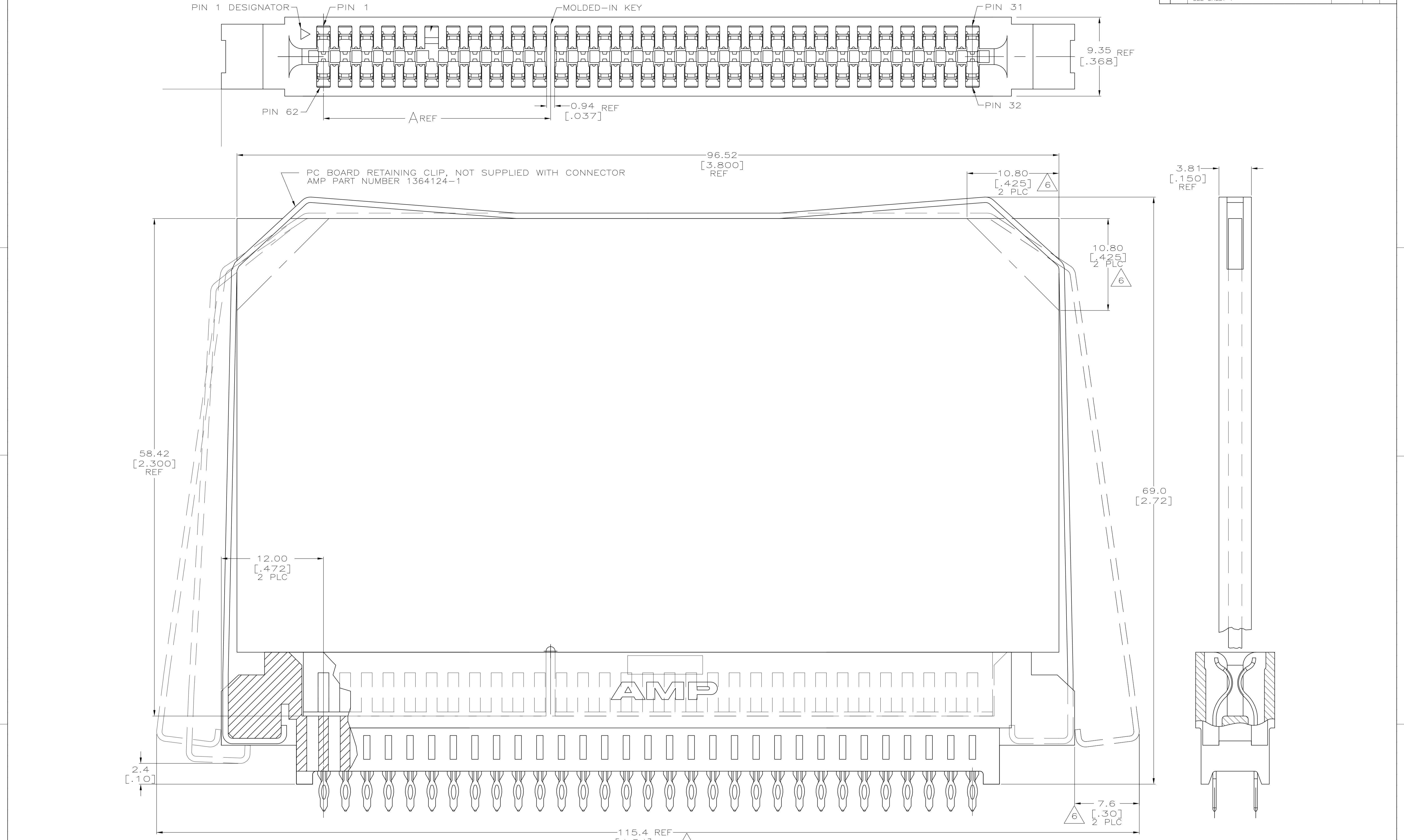
RESTRICTED TO: -

CUSTOMER DRAWING

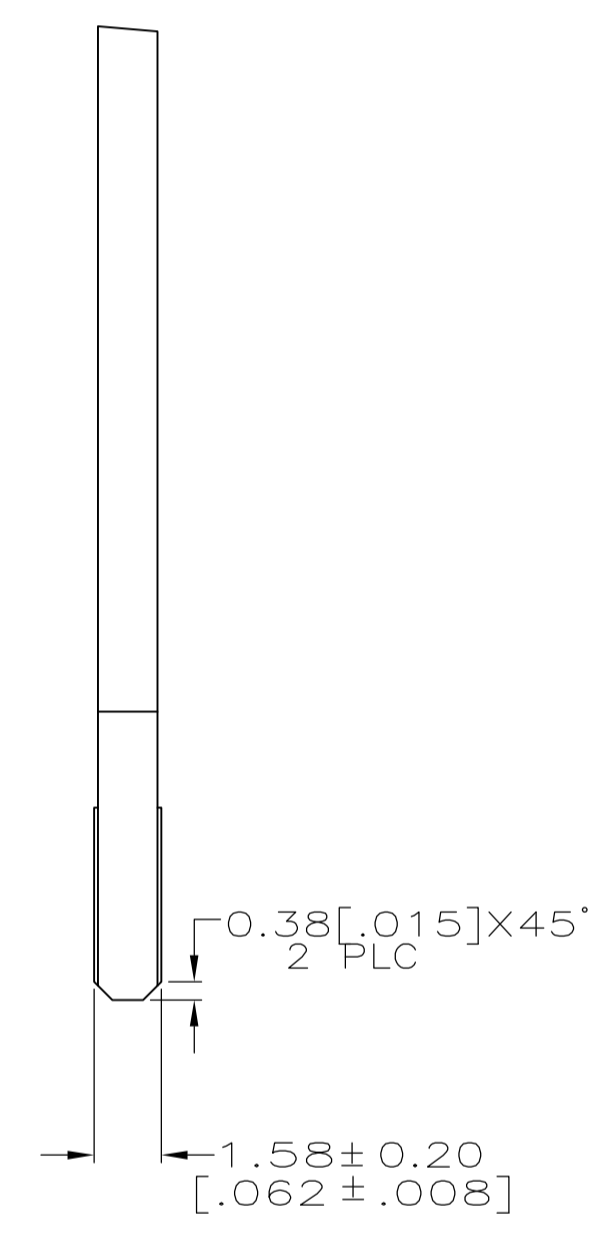
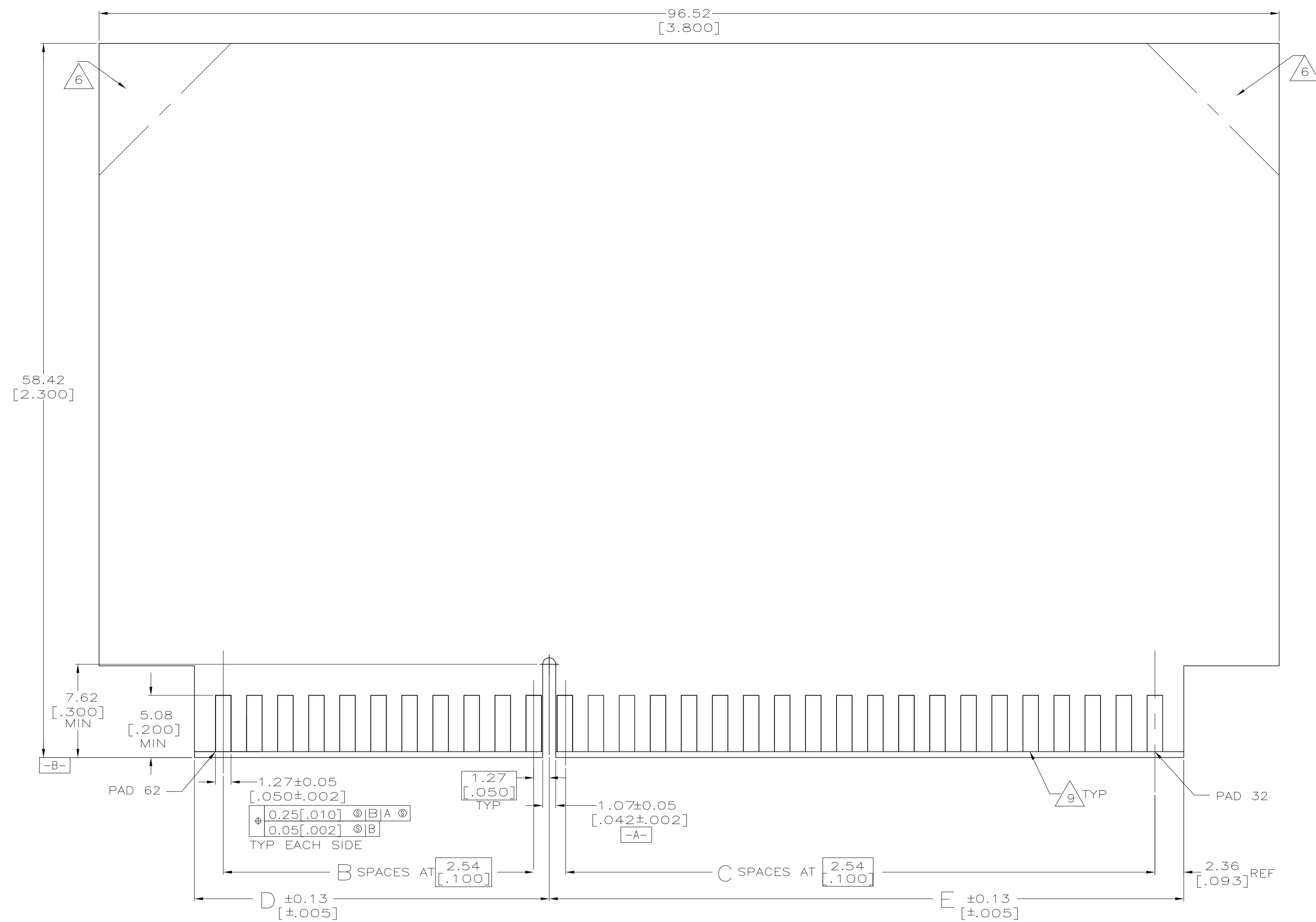
SCALE: 5:1

SHEET: 1 OF 3

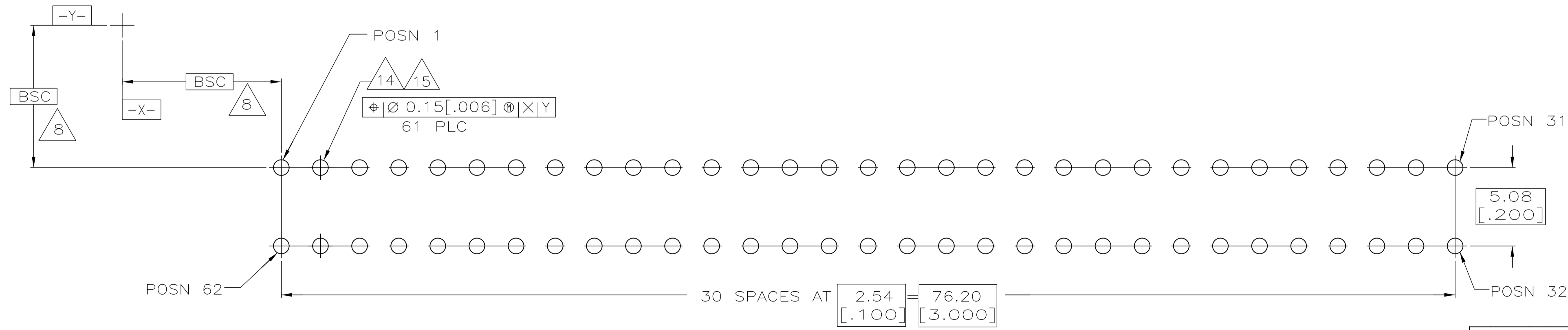
REV: D1



THIS DRAWING IS A CONTROLLED DOCUMENT.		DWN	AL FRANTUM	20 MAY 05	Tyco Electronics Corporation Harrisburg, Pa 17105-3608	
DIMENSIONS: mm [INCHES]		CHK	AL FRANTUM	20 MAY 05	NAME	
TOLERANCES UNLESS OTHERWISE SPECIFIED:		APVD			PRODUCT SPEC	
0 PLC	± -			APPLICATION SPEC		
1 PLC	± -			SIZE		
2 PLC	± 0.25 [01]			CAGE CODE		
3 PLC	± 0.13 [005]			DRAWING NO		
4 PLC	± -			RESTRICTED TO		
ANGLES	± -			WEIGHT		
MATERIAL				A1 00779		
FINISH				C=6489652		
				CUSTOMER DRAWING		
				SCALE 5:1 SHEET 2 OF 3 REV D1		



RECOMMENDED MATING BOARD EDGE CONFIGURATION



RECOMMENDED PC BOARD HOLE LAYOUT

THIS DRAWING IS A CONTROLLED DOCUMENT.		DWN AL FRANTUM 20 MAY 05	Tyco Electronics Corporation Harrisburg, Pa 17105-3608	
DIMENSIONS: mm [INCHES]		CHK AL FRANTUM 20 MAY 05	APVD	
TOLERANCES UNLESS OTHERWISE SPECIFIED:		NAME		
0 PLC ± -	1 PLC ± -	PRODUCT SPEC		
2 PLC ± 0.25 [.01]	3 PLC ± 0.13 [.005]	APPLICATION SPEC		
4 PLC ± -	ANGLES ± -	SIZE CASE CODE DRAWING NO RESTRICTED TO		
MATERIAL	FINISH	WEIGHT	A1 00779 C=6489652	-
CUSTOMER DRAWING		SCALE 5:1	SHEET 3 OF 3	REV D1