



Chipsmall Limited consists of a professional team with an average of over 10 year of expertise in the distribution of electronic components. Based in Hongkong, we have already established firm and mutual-benefit business relationships with customers from,Europe,America and south Asia,supplying obsolete and hard-to-find components to meet their specific needs.

With the principle of “Quality Parts,Customers Priority,Honest Operation,and Considerate Service”,our business mainly focus on the distribution of electronic components. Line cards we deal with include Microchip,ALPS,ROHM,Xilinx,Pulse,ON,Everlight and Freescale. Main products comprise IC,Modules,Potentiometer,IC Socket,Relay,Connector.Our parts cover such applications as commercial,industrial, and automotives areas.

We are looking forward to setting up business relationship with you and hope to provide you with the best service and solution. Let us make a better world for our industry!



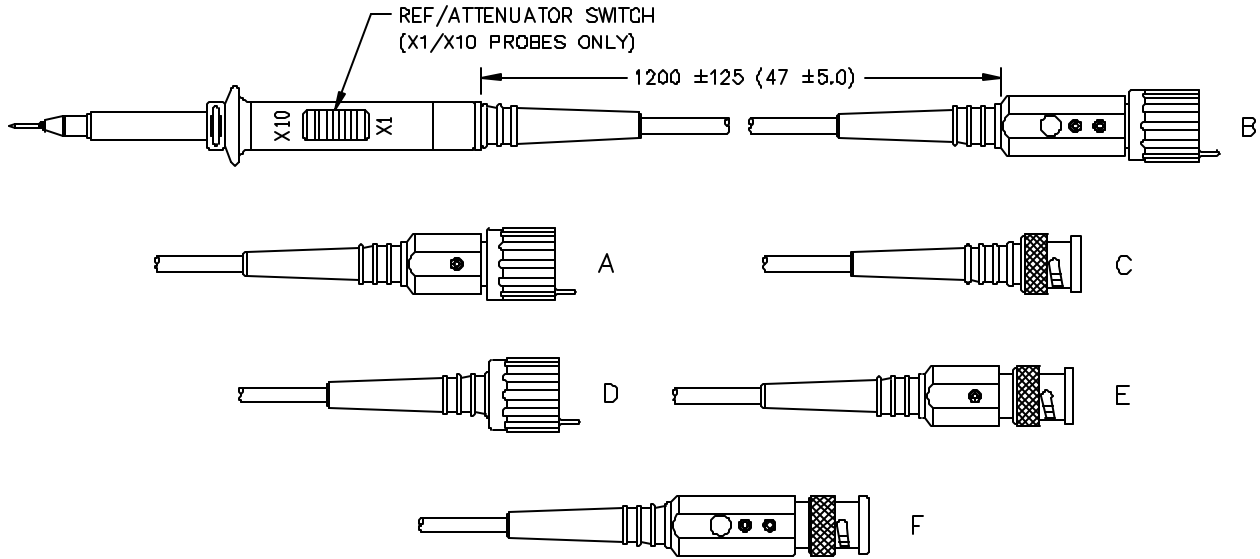
Contact us

Tel: +86-755-8981 8866 Fax: +86-755-8427 6832

Email & Skype: info@chipsmall.com Web: www.chipsmall.com

Address: A1208, Overseas Decoration Building, #122 Zhenhua RD., Futian, Shenzhen, China





MODEL NUMBER	ATTENUATION	BANDWIDTH MHz	COMPENSATION	VOLTAGE MAX. (D.C.)	READ OUT	CONNECTOR STYLE (SEE ABOVE)	SPRING ACCESSORY INCLUDED
6491	X1	30	10-80pf	300		E	X
6492	X10	350	8-45pf	300	X	B	
6493	X10	150	10-60pf	300		C	
6494	X10	150	10-80pf	300	X	D	
6495	X10	250	10-60pf	300		E	
6496	X10	300	5-45pf	300		E	X
6497	X10	300	5-45pf	300	X	A	X
6498	X100	300	10-50pf	1500		A	
6499	X1/X10	20/150	10-60pf	300		C	
6500	X1/X10	30/250	10-50pf	300		E	
6501	X10	350	8-45pf	300		F	X
6550	N/A	N/A	N/A	300	N/A	N/A	X

FEATURES:

- Modular Oscilloscope Probes feature a replaceable cable
- A set of accessories is included with each probe (spring in select kits only)
- As a minimum all probes meet IEC1010-2-031, 300V, CAT II.

RATINGS:

Maximum voltage must be derated with respect to frequency.

ORDERING INFORMATION: Model 6491-6501, 6550

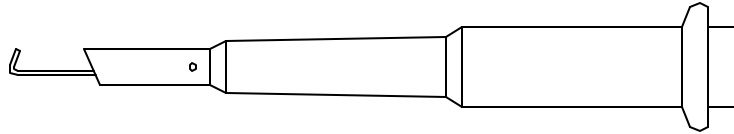
Model 6498 cable length is 80"

All dimensions are in inches and metric. All specifications are to the latest revisions. Specifications are subject to change without notice. Registered trademarks are the property of their respective companies. Made in USA

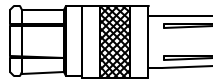
Sales: 800-490-2361 Fax: 888-403-3360
Technical Assistance: 800-241-2060

PomonaACCESS 90939 (800) 444-6785 or (425) 446-6010
 More drawings available at www.pomonaelectronics.com

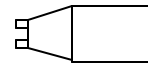
OSCILLOSCOPE PROBE ACCESSORIES



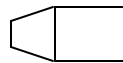
RETRACTABLE HOOK TIP



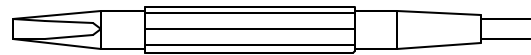
BNC ADAPTER



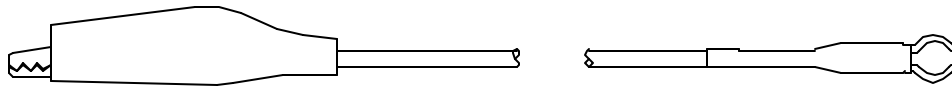
I.C. ADAPTER



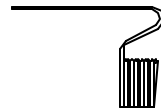
INSULATING TIP



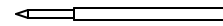
TRIMMER TOOL



6" GROUND LEAD



SPRING (IN SELECT ACCESSORY KITS ONLY)



PROBE TIPS

All dimensions are in inches and metric. All specifications are to the latest revisions. Specifications are subject to change without notice. Registered trademarks are the property of their respective companies. Made in USA