



Chipsmall Limited consists of a professional team with an average of over 10 year of expertise in the distribution of electronic components. Based in Hongkong, we have already established firm and mutual-benefit business relationships with customers from,Europe,America and south Asia,supplying obsolete and hard-to-find components to meet their specific needs.

With the principle of “Quality Parts,Customers Priority,Honest Operation,and Considerate Service”,our business mainly focus on the distribution of electronic components. Line cards we deal with include Microchip,ALPS,ROHM,Xilinx,Pulse,ON,Everlight and Freescale. Main products comprise IC,Modules,Potentiometer,IC Socket,Relay,Connector.Our parts cover such applications as commercial,industrial, and automotives areas.

We are looking forward to setting up business relationship with you and hope to provide you with the best service and solution. Let us make a better world for our industry!



Contact us

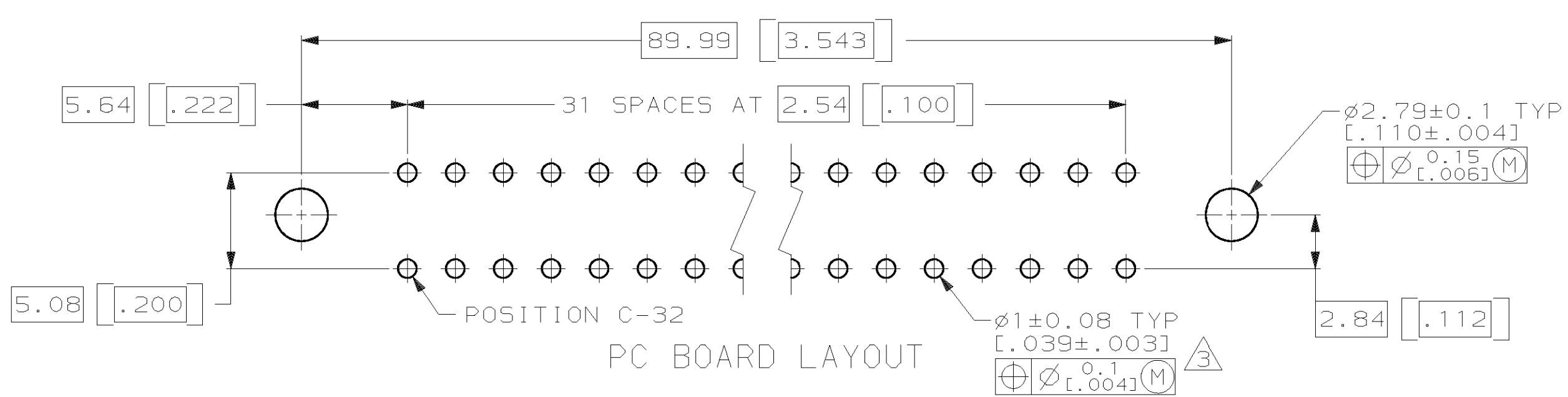
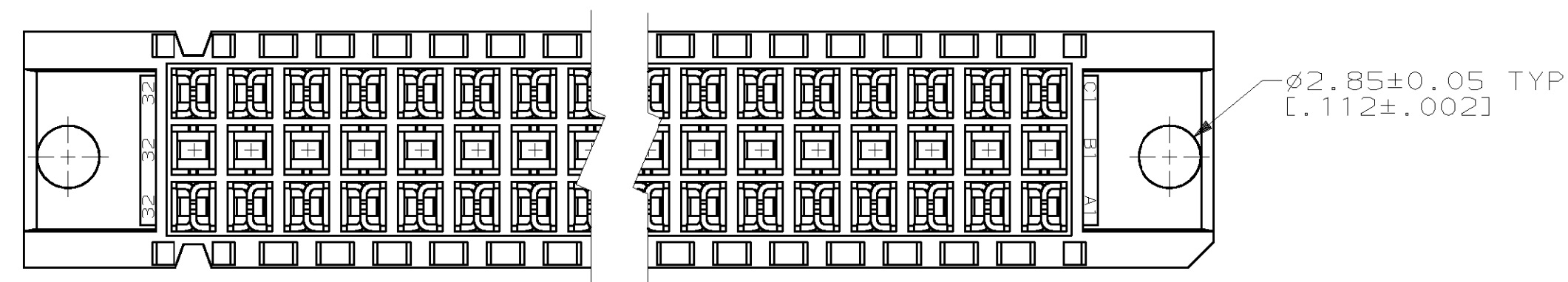
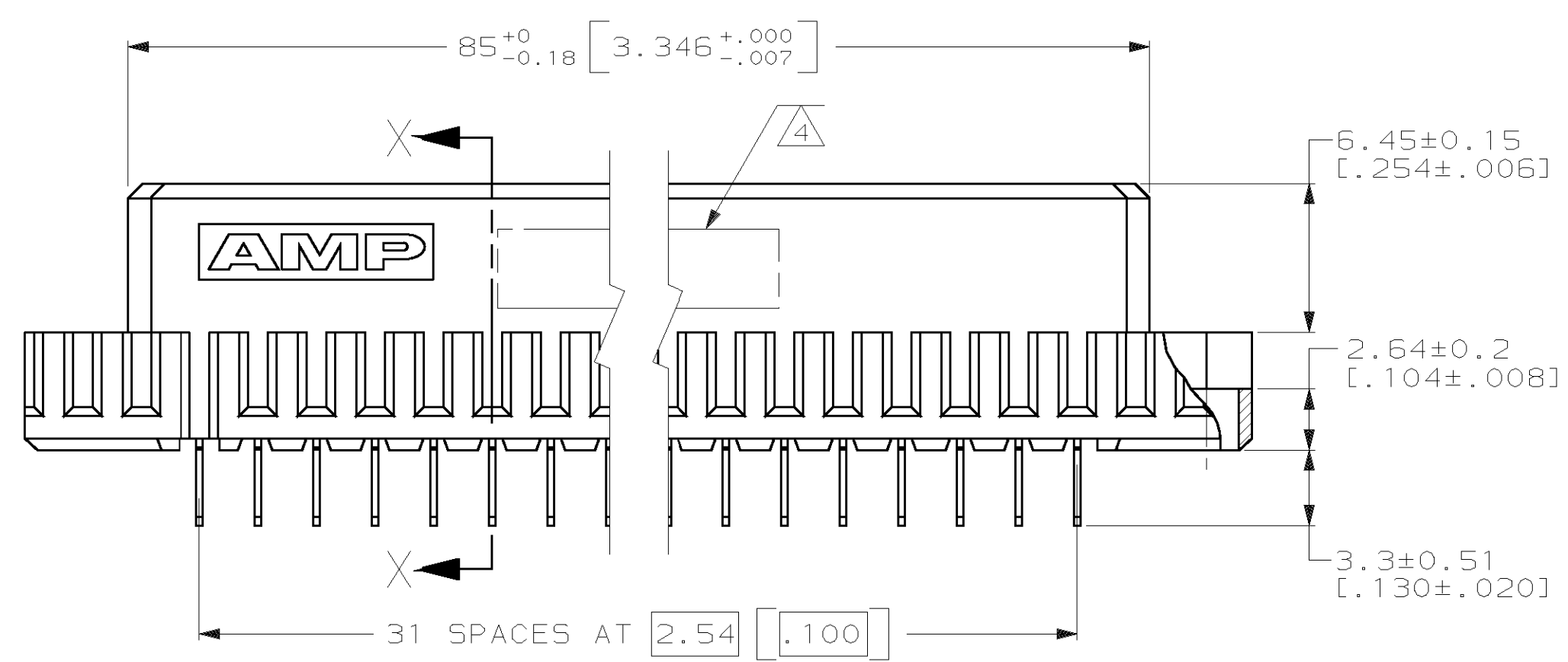
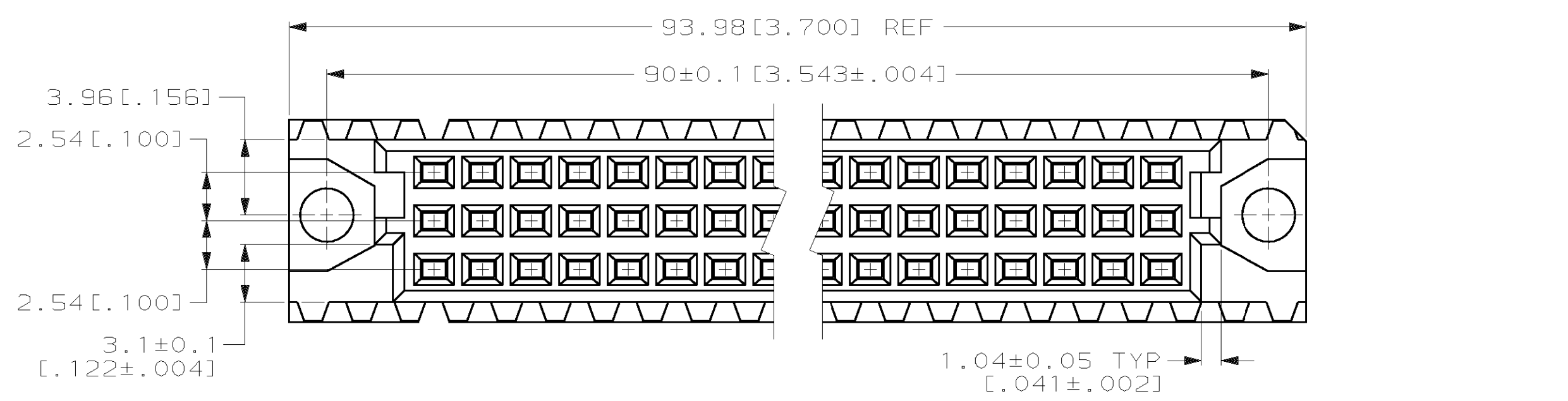
Tel: +86-755-8981 8866 Fax: +86-755-8427 6832

Email & Skype: info@chipsmall.com Web: www.chipsmall.com

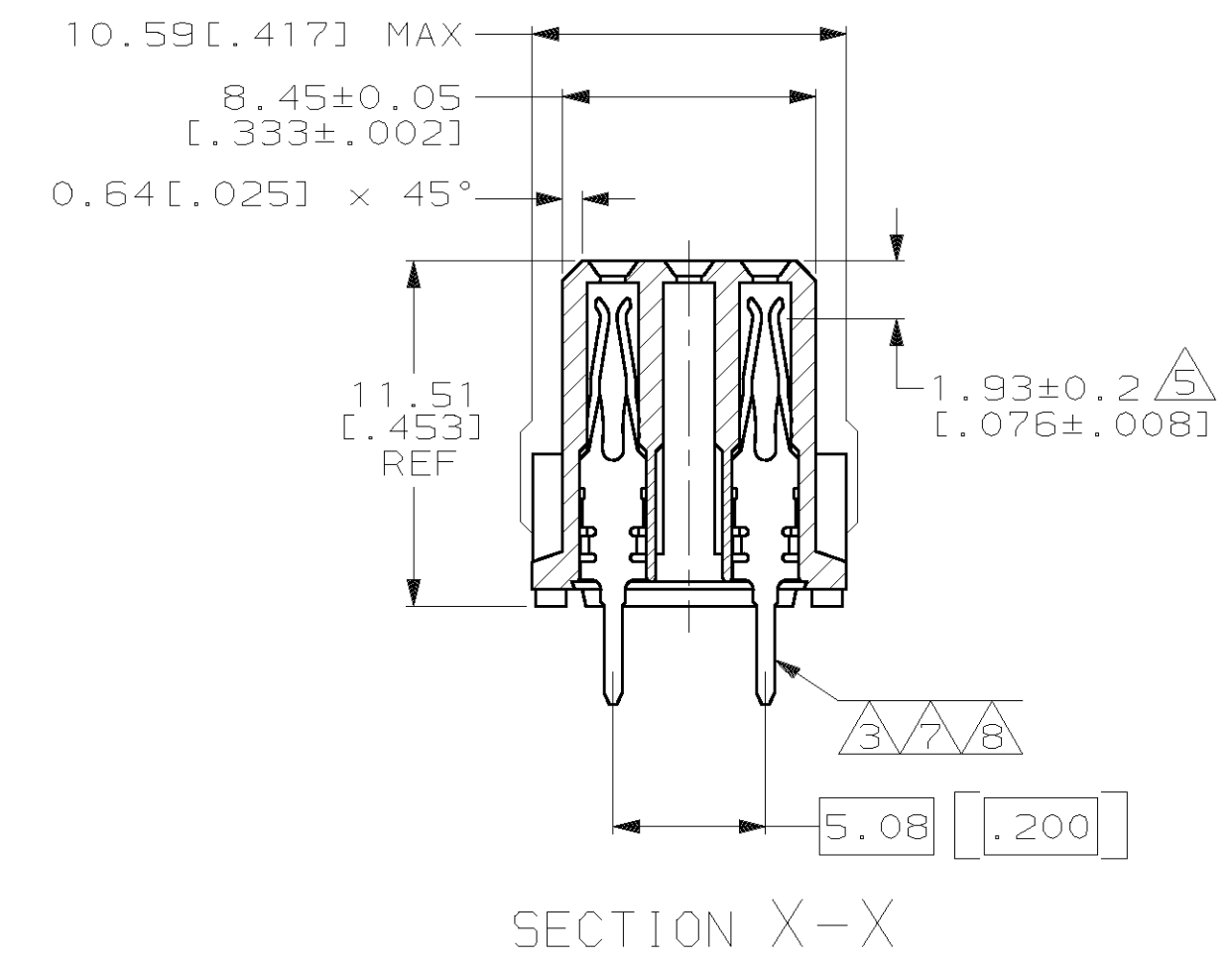
Address: A1208, Overseas Decoration Building, #122 Zhenhua RD., Futian, Shenzhen, China



LOC		DIST		REV		REVISIONS		DATE	APPD
AD	25	P	F	ZONE	LTR	DESCRIPTION			
				E	EC	0010-1488-95		4/1/96	CR
				F	REV PER EC	001B-0367-00		09 JAN 01	CR



- ① HOUSING MATERIAL: GLASS-FILLED POLYESTER. COLOR: GRAY.
- ② CONTACT MATERIAL: PHOSPHOR BRONZE.
- ③ CONTACT FINISH: 0.00076 [.000030] GOLD IN CONTACT AREA. 0.00127 [.000050] NICKEL UNDERPLATE ALL OVER. TIN-LEAD PLATE ON POSTS.
- ④ PART NUMBER, DATE CODE IDENTIFICATION, CSA LOGO IN THIS APPROXIMATE AREA, ON REVERSE SIDE.
- ⑤ CONTACT POINT.
- ⑥ RECOMMENDED HOLE SIZE FOR MANUAL APPLICATION OF CONNECTOR ONTO PC BOARD.
- ⑦ CONTACT FINISH: DIN 41612 CLASS 3 IN CONTACT AREA. TIN-LEAD PLATE ON POSTS.
- ⑧ CONTACT FINISH: DIN 41612 CLASS 2 IN CONTACT AREA. TIN-LEAD PLATE ON POSTS.



		POSITIONS LOADED	ROWS	NO. OF LOADED POSITIONS	PART NUMBER
OBSOLETE	⑦	1-32	C	32	650956-9
		NONE	B	0	
	⑧	1-32	A	32	650956-5
		NONE	B	0	
SUPERSEDED BY 650956-5	③	1-32	A	32	650956-4
		NONE	B	0	
		1-32	A	32	

DO NOT SCALE PRINT. UNLESS SPECIFIED DIMENSIONS IN mm [INCHES] TOLERANCES ON:		DR L. BRINER 1/23/91		AMP INCORPORATED Harrisburg, Pa. 17105	
1 PLC DEC ± -		CHK N. DRASHER 12/31/91			
2 PLC DEC ± 0.13 [.005]		APPD N. DRASHER 12/31/91		NAME	
ANGLES ± -		APPD K.R. PARMER 12/31/91		EUROCARD, RECEPTACLE ASSEMBLY, TYP C	
HOUSING: ①		APPLICATION SPEC		SIZE D	FSCM NO 00779
CONTACT: ②		-		DRAWING NO 650956	
CONTACT: ③ ⑦ ⑧		WEIGHT -		SCALE 4:1	SHEET 1 OF 1