



Chipsmall Limited consists of a professional team with an average of over 10 year of expertise in the distribution of electronic components. Based in Hongkong, we have already established firm and mutual-benefit business relationships with customers from,Europe,America and south Asia,supplying obsolete and hard-to-find components to meet their specific needs.

With the principle of "Quality Parts,Customers Priority,Honest Operation,and Considerate Service",our business mainly focus on the distribution of electronic components. Line cards we deal with include Microchip,ALPS,ROHM,Xilinx,Pulse,ON,Everlight and Freescale. Main products comprise IC,Modules,Potentiometer,IC Socket,Relay,Connector.Our parts cover such applications as commercial,industrial, and automotives areas.

We are looking forward to setting up business relationship with you and hope to provide you with the best service and solution. Let us make a better world for our industry!



Contact us

Tel: +86-755-8981 8866 Fax: +86-755-8427 6832

Email & Skype: info@chipsmall.com Web: www.chipsmall.com

Address: A1208, Overseas Decoration Building, #122 Zhenhua RD., Futian, Shenzhen, China

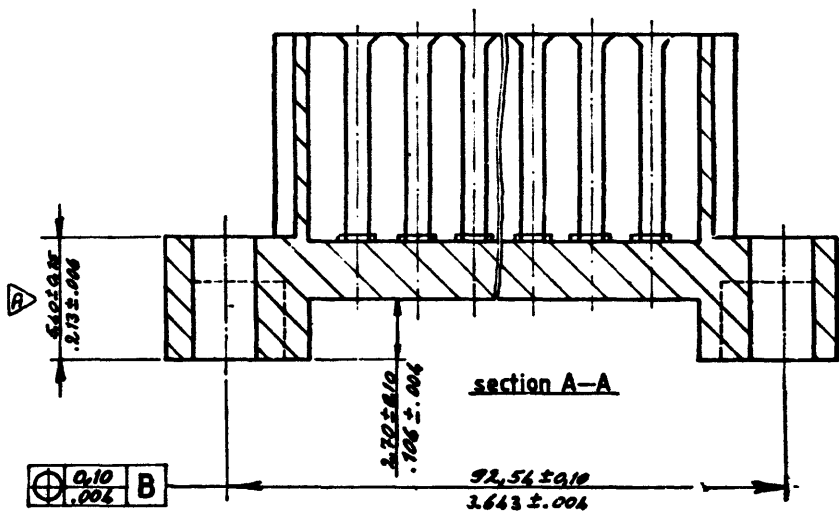
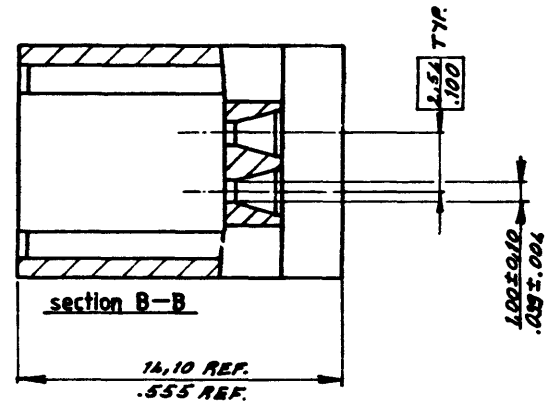
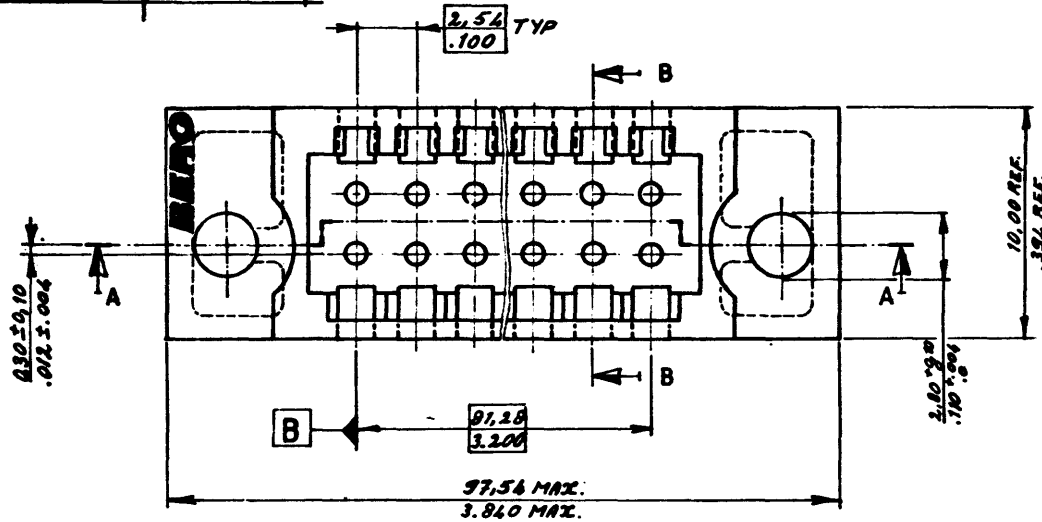


PRODUCT NUMBER	NUMBER OF POSITIONS
65164-033	2 X 33

THIRD ANGLE PROJECTION

This print is the property of and embodies proprietary designs of the BERG ELECTRONICS DIVISION of DU PONT DE NEMOURS (NEDERLAND) BV. No part of the design shown on this print may be used in any way without the written consent of BERG ELECTRONICS DIVISION, Postbus 2000, Mijdrecht.

CONVERSIONS: $\frac{1}{16}$ INCHES = .0625 MM
DO NOT SCALE



NOTE:
MATERIAL: THERM. PL. POLYESTER. COLOUR, BLACK
30% GLASSFILLED, UL-94-V0

65164-033-1A 1001

CUSTOMER COPY FOR REFERENCE ONLY			
BERG ELECTRONICS DIVISION DU PONT DE NEMOURS (NEDERLAND) BV Postbus 2000, Mijdrecht			
PART NO.	MATERIAL	PLATING	REV
			B
DATE	DATE	DATE	DATE
APR 16 1978	JUL 16 1978	JUL 16 1978	JUL 16 1978
SCALE	TITLE		
5:1	DOUBLE ROW STRAIGHT SHROUD CABLE CONNECTOR MALE PART		