



Chipsmall Limited consists of a professional team with an average of over 10 year of expertise in the distribution of electronic components. Based in Hongkong, we have already established firm and mutual-benefit business relationships with customers from,Europe,America and south Asia,supplying obsolete and hard-to-find components to meet their specific needs.

With the principle of “Quality Parts,Customers Priority,Honest Operation,and Considerate Service”,our business mainly focus on the distribution of electronic components. Line cards we deal with include Microchip,ALPS,ROHM,Xilinx,Pulse,ON,Everlight and Freescale. Main products comprise IC,Modules,Potentiometer,IC Socket,Relay,Connector.Our parts cover such applications as commercial,industrial, and automotives areas.

We are looking forward to setting up business relationship with you and hope to provide you with the best service and solution. Let us make a better world for our industry!



Contact us

Tel: +86-755-8981 8866 Fax: +86-755-8427 6832

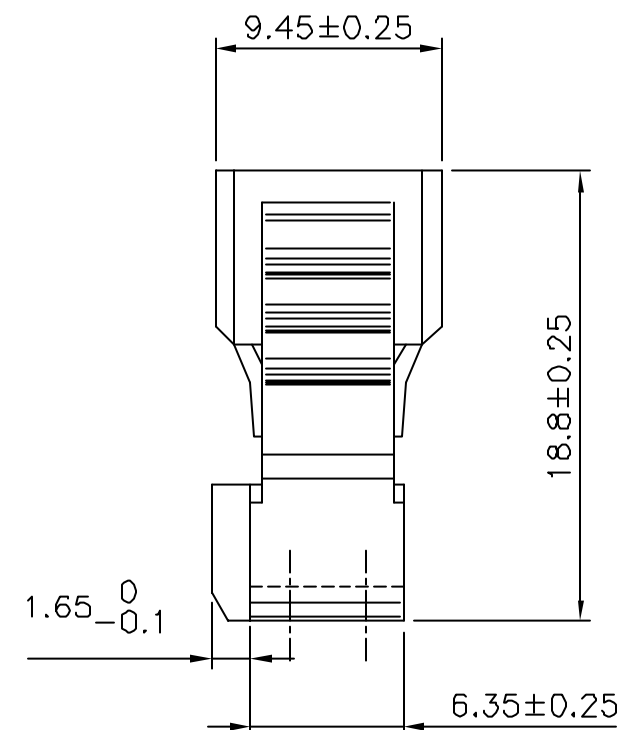
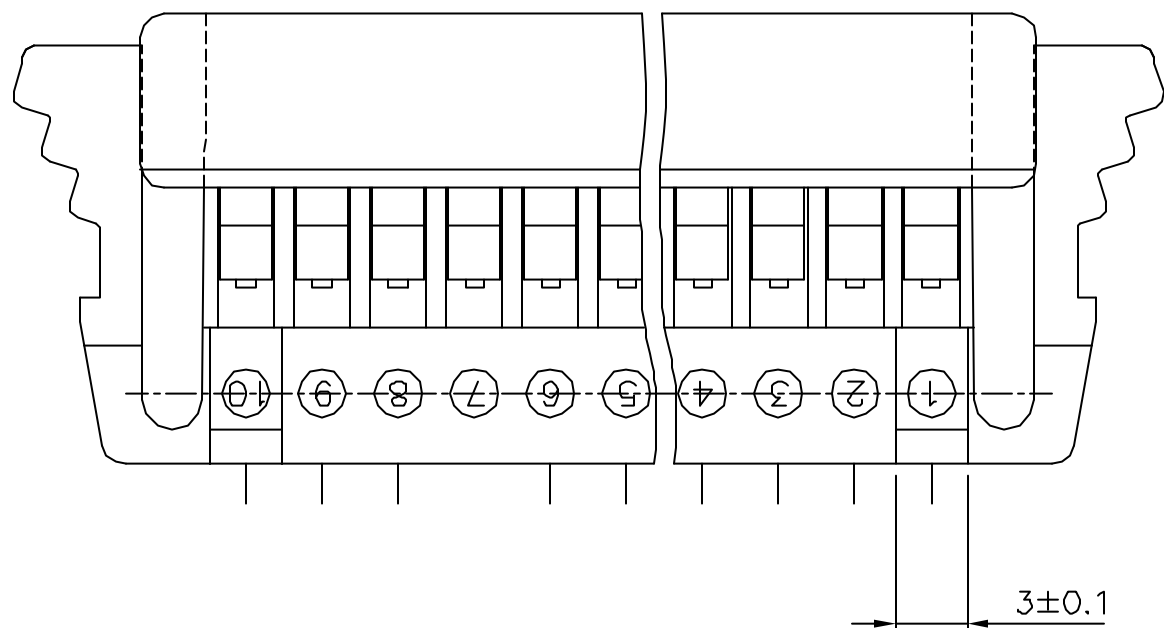
Email & Skype: info@chipsmall.com Web: www.chipsmall.com

Address: A1208, Overseas Decoration Building, #122 Zhenhua RD., Futian, Shenzhen, China



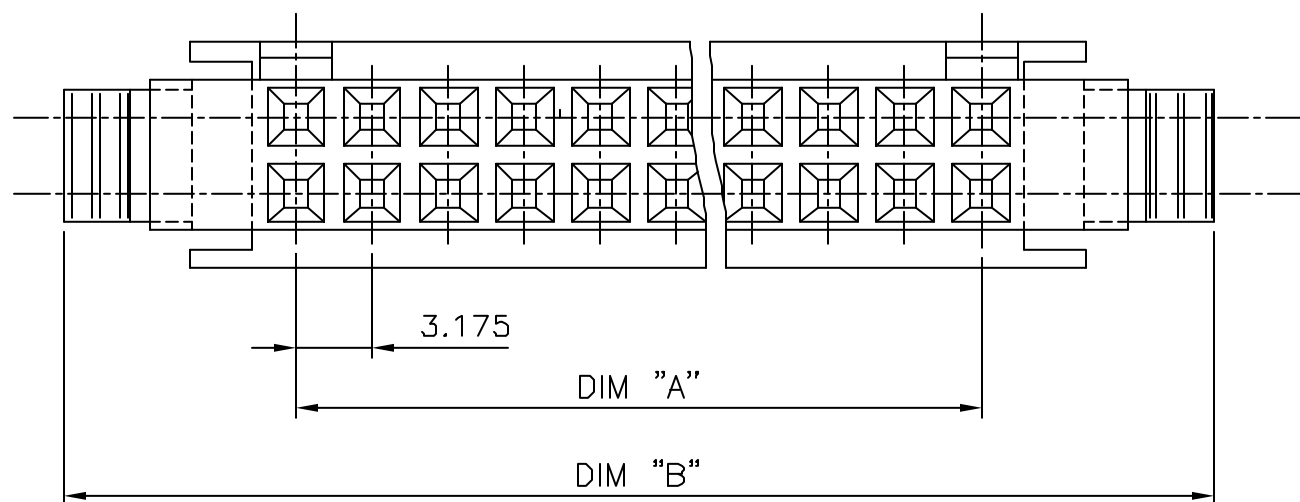
PRODUCT NUMBER	NB OF POS	DIM "A"	DIM "B"	POLARIZED POSITIONS	
65258-001(LF)	2 x 06	15.87	34.87	1	6
65258-002(LF)	2 x 07	19.05	38.05	1	7
65258-003(LF)	2 x 10	28.57	47.57	1	10
65258-004(LF)	2 x 12	34.92	53.92	1	12
65258-005(LF)	2 x 04	9.52	28.52	1	4

WHEN NEEDED, SUFFIX LETTER "LF" INDICATES THE PRODUCT IS RoHS COMPLIANT, SEE NOTE 4



NOTES:

- 1 - PLASTIC MATERIAL: POLYAMID 25% GLASSFILLED , COLOR BLACK FLAME RETARDANT PER UL 94-V0.
 - 2 - THIS HOUSING TO BE USED IN COMBINATION WITH BERG MAXI PV TERMINAL ACCORDING TO CRIMPING METHODS DESCRIBED ON DWG 65258 215 SHEET 1/1.
 - 3 - THIS CONNECTOR TO BE MATE WITH BERG HEADER 76427-YXX OR 77432-YXX
 - 4 - RoHS COMPATIBLE PRODUCT SPECIFICATIONS
 - a - LABELING:
 - MEETS PACKAGING SPECS AS PER GS-14-920
 - b - LEGAL STATEMENT: SEE GS-22-008
- THE PRODUCT IS NOT INTENDED TO BE EXPOSED TO A MANUFACTURING SOLDER PROCESS.



mat'l. code SEE NOTE 1				surface ISO 1302 ✓	tolerance ISO 406 ISO 101	projection 101	product family BERGCON			
ltr	ecn no	dr	date	tolerances unless otherwise specified			title POLARIZED MAXI LATCH HOUSING			
D	BNL5909	AOO	84.12.03	angles	linear		scale 3:1			
E	F60696	JMC	96.10.04				mm			
F	F05-0235	DLE	05.08.24				scale 3:1			
G	F05-0286	DLE	05.11.07	dr	COMPAGNON J	96.02.08	FCJ			
H	F06-0218	DLE	06.07.11	enr	JMC	96.02.08	dwg no			
				chr			sheet 1 of 1			
				appd	JMC	96.02.08	size			
sheet	revision						type			
index	sheet						CUSTOMER Drawing			