



Chipsmall Limited consists of a professional team with an average of over 10 year of expertise in the distribution of electronic components. Based in Hongkong, we have already established firm and mutual-benefit business relationships with customers from,Europe,America and south Asia,supplying obsolete and hard-to-find components to meet their specific needs.

With the principle of “Quality Parts,Customers Priority,Honest Operation,and Considerate Service”,our business mainly focus on the distribution of electronic components. Line cards we deal with include Microchip,ALPS,ROHM,Xilinx,Pulse,ON,Everlight and Freescale. Main products comprise IC,Modules,Potentiometer,IC Socket,Relay,Connector.Our parts cover such applications as commercial,industrial, and automotives areas.

We are looking forward to setting up business relationship with you and hope to provide you with the best service and solution. Let us make a better world for our industry!



Contact us

Tel: +86-755-8981 8866 Fax: +86-755-8427 6832

Email & Skype: info@chipsmall.com Web: www.chipsmall.com

Address: A1208, Overseas Decoration Building, #122 Zhenhua RD., Futian, Shenzhen, China

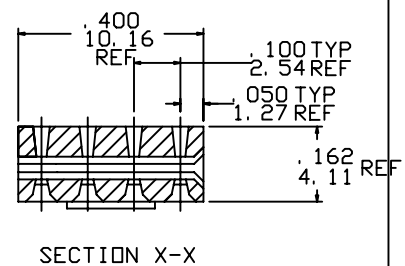
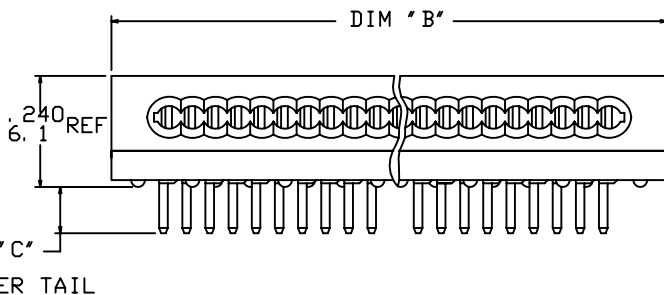
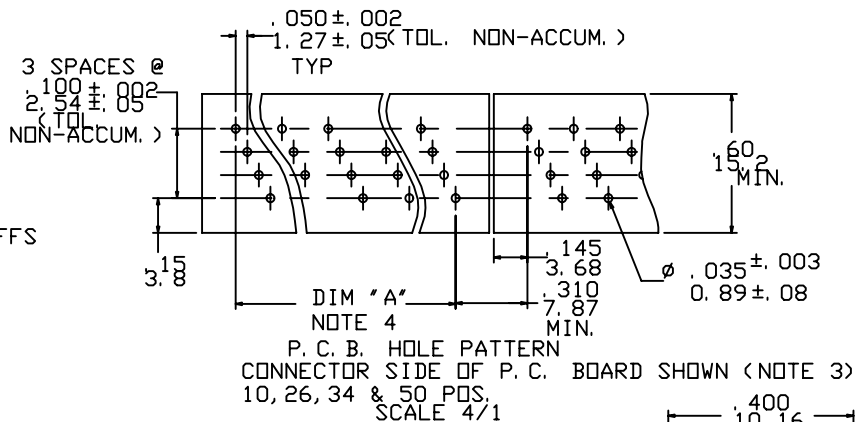
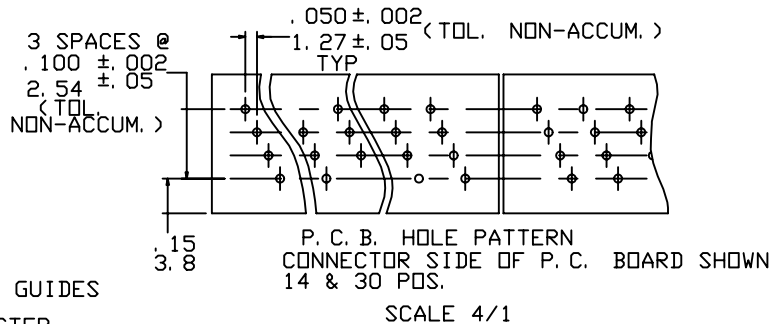
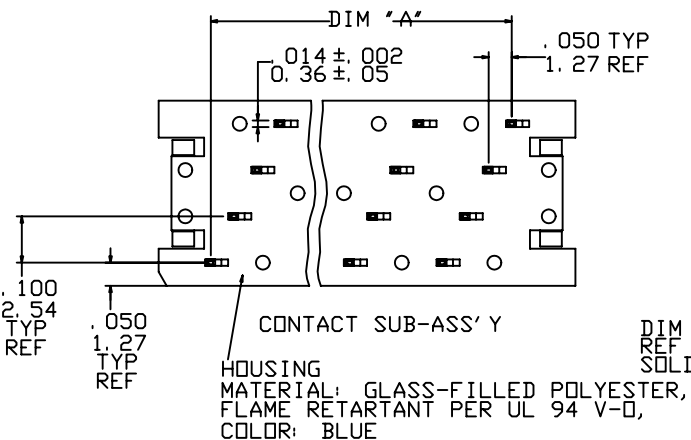
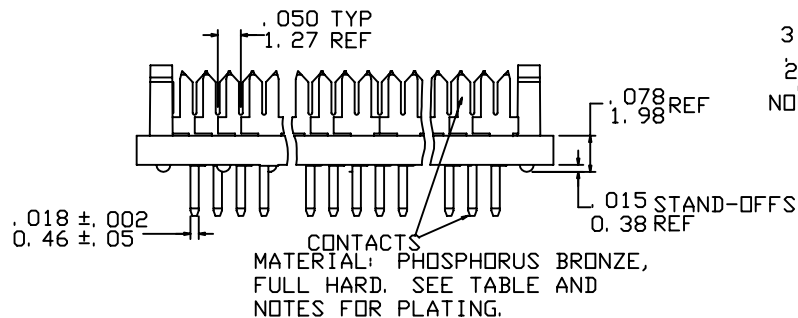
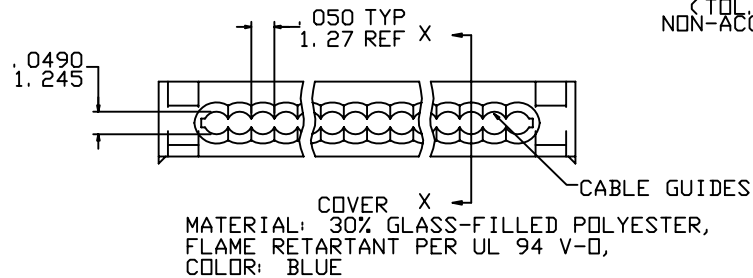


Tous droits strictement réservés. Reproduction ou communication à des tiers interdite sous quelque forme que ce soit sans autorisation écrite du propriétaire.
 Property of © FCI ELECTRONICS. Copyright © FCI ELECTRONICS INC. Droits de reproduction FCI ELECTRONICS INC.



All rights strictly reserved. Reproduction or issue to third parties in any form whatever is not permitted without written authority from the proprietor.
 Property of © FCI ELECTRONICS. Copyright © FCI ELECTRONICS INC.

PRODUCT NO.
SEE TABLE



mat'l. code				tolerances unless otherwise specified		CUSTOMER COPY	FCI www.fciconnect.com
ltr	ecn no	dr	date	linear	.XX ±.01		
P	V11058	JM	6/12/91		.XXX ±.005	projection	title QUICKIE P.C.B. CONNECTOR 10,14,26,30,34, & 50 POS.
R	V50805	LSS	7/5/95		.XXXX ±.0020	INCH/MM	
S	N05-0123	ZC	5/9/05	angles	0° ±2°	scale	product family
T	N07-0199	WG	08/27/07	dr	J.MUSTARD 6/12/91	2.5:1	size dwg no
				enr	M.SMYK 6/12/91		code
				chr	W.FUNK 6/12/91		sheet
				appd	M.SMYK 6/12/91		1 of 2
sheet index	revision sheet	T	T				
		1	2				

	NO. OF POS.	DIM "A"	DIM "B"	DIM "C" REF	SEE NOTE
65495-017(LF)	10	. 450/11. 43	. 700/17. 78	. 100/2. 54	1
-018(LF)				2	
-019(LF)				1	
-020(LF)				2	
-021(LF)	26	1. 250/31. 75	1. 500/38. 10	. 100/2. 54	1
-022(LF)				2	
-023(LF)				1	
-024(LF)				2	
-025(LF)	34	1. 650/41. 91	1. 900/48. 26	. 100/2. 54	1
-026(LF)				2	
-027(LF)				1	
-028(LF)				2	
-029(LF)	50	2. 450/62. 23	2. 700/68. 58	. 100/2. 54	1
-030(LF)				2	
-031(LF)				1	
-032(LF)				2	
-033(LF)	14	. 650/16. 51	. 900/22. 86	. 100/2. 54	1
-034(LF)				2	
-035(LF)				1	
-036(LF)				2	
-037(LF)	30	1. 450/36. 83	1. 700/43. 18	. 100/2. 54	1
-038(LF)				2	
-039(LF)				1	
65495-040(LF)				2	

Tous droits strictement reserves. Reproduction ou communication a des tiers interdite sous quelque forme que ce soit sans autorisation écrite du propriétaire. Propriete de © FCI ELECTRONICS. Droits de reproduction FCI ELECTRONICS INC.



All rights strictly reserved. Reproduction or issue to third parties in any form whatever is not permitted without written authority from the proprietor. Property of © FCI ELECTRONICS Copyright FCI ELECTRONICS INC.

NOTES:

- ① 50u"/1.27uM MIN. Ni UNDERPLATE OVER ENTIRE TERMINAL. AND Au FLASH ON SOLDER TAIL ONLY.
- ② 65495-***: 150u"/3.81uM MIN. TIN/LEAD 93/7 OVER ENTIRE TERMINAL. 50u"/1.27uM MIN. Ni UNDERPLATE. 65495-***LF: 150u"/3.81uM MIN. MATTE TIN OVER ENTIRE TERMINAL. 50u"/1.27uM MIN. Ni UNDERPLATE.
- ③ SEE TA 247 FOR MORE INFORMATION.
- 4. PATTERN SHOWN FOR CENTER TEN CONTACTS IS TYPICAL FOR ALL CONNECTOR LENGTHS, EXCEPT 14 & 30 POSITIONS.
- 5. SUB-ASSEMBLY & COVER PACKED SEPARATELY.
- 6. THE HOUSING OF XXXXX-XYLF WILL WITHSTAND EXPOSURE TO 260°C PEAK TEMPERATURE FOR 10 SECONDS IN A WAVE SOLDER PROCESS.

mat'l. code				tolerances unless otherwise specified		CUSTOMER COPY		 www.fciconnect.com		
ltr	ecn no	dr	date	linear	.XX ±.01/.0±.3	projection		title		
T					.XXX ±.005/.00±.13			QUICKIE P.C.B CONNECTOR		
					.XXX ±.0020/.000±.051			10,14,26,30,34,& 50 POS.		
				angles	0° ±2'	INCH/MM		product family		
				dr	J.MUSTARD 6/11/91			size		code
				enr	M.SMYK 6/11/91			dwg no		-
				chr	W.FUNK 6/11/91			scale		sheet
				appd	M.SMYK 6/11/91	1:1		A 65495		
sheet index	revision sheet	T	2						2 of	