



Chipsmall Limited consists of a professional team with an average of over 10 year of expertise in the distribution of electronic components. Based in Hongkong, we have already established firm and mutual-benefit business relationships with customers from,Europe,America and south Asia,supplying obsolete and hard-to-find components to meet their specific needs.

With the principle of “Quality Parts,Customers Priority,Honest Operation,and Considerate Service”,our business mainly focus on the distribution of electronic components. Line cards we deal with include Microchip,ALPS,ROHM,Xilinx,Pulse,ON,Everlight and Freescale. Main products comprise IC,Modules,Potentiometer,IC Socket,Relay,Connector.Our parts cover such applications as commercial,industrial, and automotives areas.

We are looking forward to setting up business relationship with you and hope to provide you with the best service and solution. Let us make a better world for our industry!



Contact us

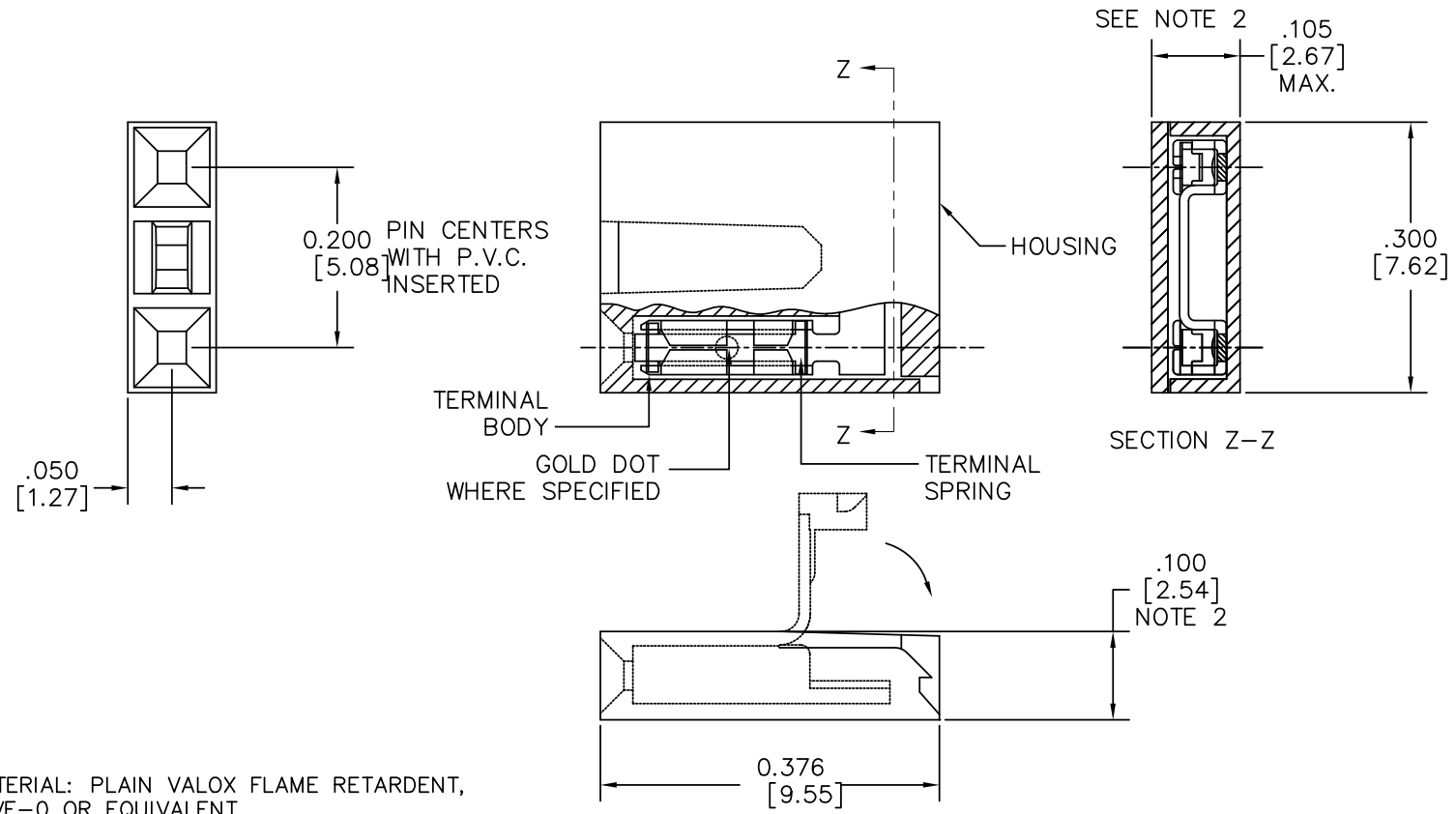
Tel: +86-755-8981 8866 Fax: +86-755-8427 6832

Email & Skype: info@chipsmall.com Web: www.chipsmall.com

Address: A1208, Overseas Decoration Building, #122 Zhenhua RD., Futian, Shenzhen, China



PRODUCT NO.
SEE SHT. 2



NOTES

- HOUSING MATERIAL: PLAIN VALOX FLAME RETARDENT, PER UL 94-VE-0 OR EQUIVALENT. COLOR WHITE
- .100/2.54 MAX. APPLIES TO HOUSING BODY. .105/2.67 MAX. APPLIES TO BODY AND LID, AFTER LID IS CLOSED PER TMS-258-88
- ADD 'LF' SUFFIX AT THE END OF PART NUMBERS FOR LEAD FREE OPTION.
- IF "LF" THE P/N THE PRODUCT MEETS EUROPEAN UNION DIRECTIVES AND OTHER COUNTRY REGULATION AS DESCRIBED IN GS-22-008.
- THE PRODUCT IS NOT INTENDED TO BE EXPOSED TO A MANUFACTURING SOLDER PROCESS.
- PRODUCT SPECIFICATION: BUS-12-023.

mat'l. code		surface ISO 1302 ✓		tolerance ISO 406 ISO 1101		projection ISO 1101		product family JUMPER	
ltr ecn nchr date		tolerances unless otherwise specified		title		MINI JUMP CONNECTOR ASS'Y 200 cc			
F	M06-0187	MHT	5/15/06	angles	linear	XXX.X/XXX.X	INCH/MM		dwg no
G	M07-0112	MHT	2/14/07	0°±2'		XXX.X/XXX.X	scale 10:1		sheet of 2
H	M09-0065	MHT	4/13/09			XXX.X/XXX.X			size
J	BLX-N-011712	J.Z	2012-05-04	dr	J.W. BAIR	2/3/89	FCJ		A3
				engr	M.HAHN	2/3/89			65771
				chr					type
				appd	M.HAHN	2/3/89			Product Customer Drawing
sheet index	revision	J	J						
	sheet	1	2						

Copyright FCI
 FCIconnect.com

PRODUCT NO. NOTE 3	TERMINAL		TERMINAL SPRING	
	BODY MATERIAL	CONTACT PLATING	MATERIAL	PLATING
65771-001	.010/.025 THK. 1/4 HD. BRASS ALLOY UNS C26000	1.02μ/40μ" AU OR GXT OVER 1.27μ/50μ" NICKEL	.122/.0048 THK BE-CU ALLOY	GOLD FLASH
65771-002		TIN LEAD	UNS C17200 HEAT TREATED	TIN PLATED
65771-003	_____	_____	_____	_____
65771-004	.010/.025 THK. 1/4 HD CU-NI ALLOY UNS C72500	.03/.001 MIN THK. GOLD DOT	.122/.0048 THK BE-CU ALLOY UNS C17200 HEAT TREATED	GOLD FLASH
65771-005				.25/.010 BRASS

OBSOLETE

LEAD FREE OPTION

PRODUCT NO.	TERMINAL		TERMINAL SPRING	
	BODY MATERIAL	CONTACT PLATING	MATERIAL	PLATING
65771-001LF	.010/.025 THK. 1/4 HD. BRASS ALLOY UNS C26000	1.02μ/40μ" AU OR GXT OVER 1.27μ/50μ" NICKEL	.122/.0048 THK BE-CU ALLOY	GOLD FLASH
65771-002LF		TIN	UNS C17200 HEAT TREATED	TIN PLATED
65771-004LF	.010/.025 THK. 1/4 HD CU-NI ALLOY UNS C72500	.03/.001 MIN THK. GOLD DOT	.122/.0048 THK BE-CU ALLOY UNS C17200 HEAT TREATED	GOLD FLASH
65771-005LF				.25/.010 BRASS

mat'l. code	surface ISO 1302 ✓	tolerance ISO 406 ISO 1101	projection 	product family JUMPER
ltr	ecn	ndr	date	tolerances unless otherwise specified
J				linear X.XX±.01/X.XX±.03 X.XX±.005/X.XX±.013 X.XX±.0020/X.XX±0.051
				angles 0°±2'
				INCH/MM
				scale 10:1
	dr	J.W. BAIR	2/3/89	
	engr	M.HAHN	2/3/89	
	chr			
	appd	M.HAHN	2/3/89	
sheet index	revision sheet			
				title MINI JUMP CONNECTOR ASS'Y 200 cc
				dwg no 65771
				shee 2 of 2 size A3
				type Product Customer Drawing

FCJ
FCIconnect.com

Copyright FCI