



Chipsmall Limited consists of a professional team with an average of over 10 year of expertise in the distribution of electronic components. Based in Hongkong, we have already established firm and mutual-benefit business relationships with customers from,Europe,America and south Asia,supplying obsolete and hard-to-find components to meet their specific needs.

With the principle of “Quality Parts,Customers Priority,Honest Operation,and Considerate Service”,our business mainly focus on the distribution of electronic components. Line cards we deal with include Microchip,ALPS,ROHM,Xilinx,Pulse,ON,Everlight and Freescale. Main products comprise IC,Modules,Potentiometer,IC Socket,Relay,Connector.Our parts cover such applications as commercial,industrial, and automotives areas.

We are looking forward to setting up business relationship with you and hope to provide you with the best service and solution. Let us make a better world for our industry!



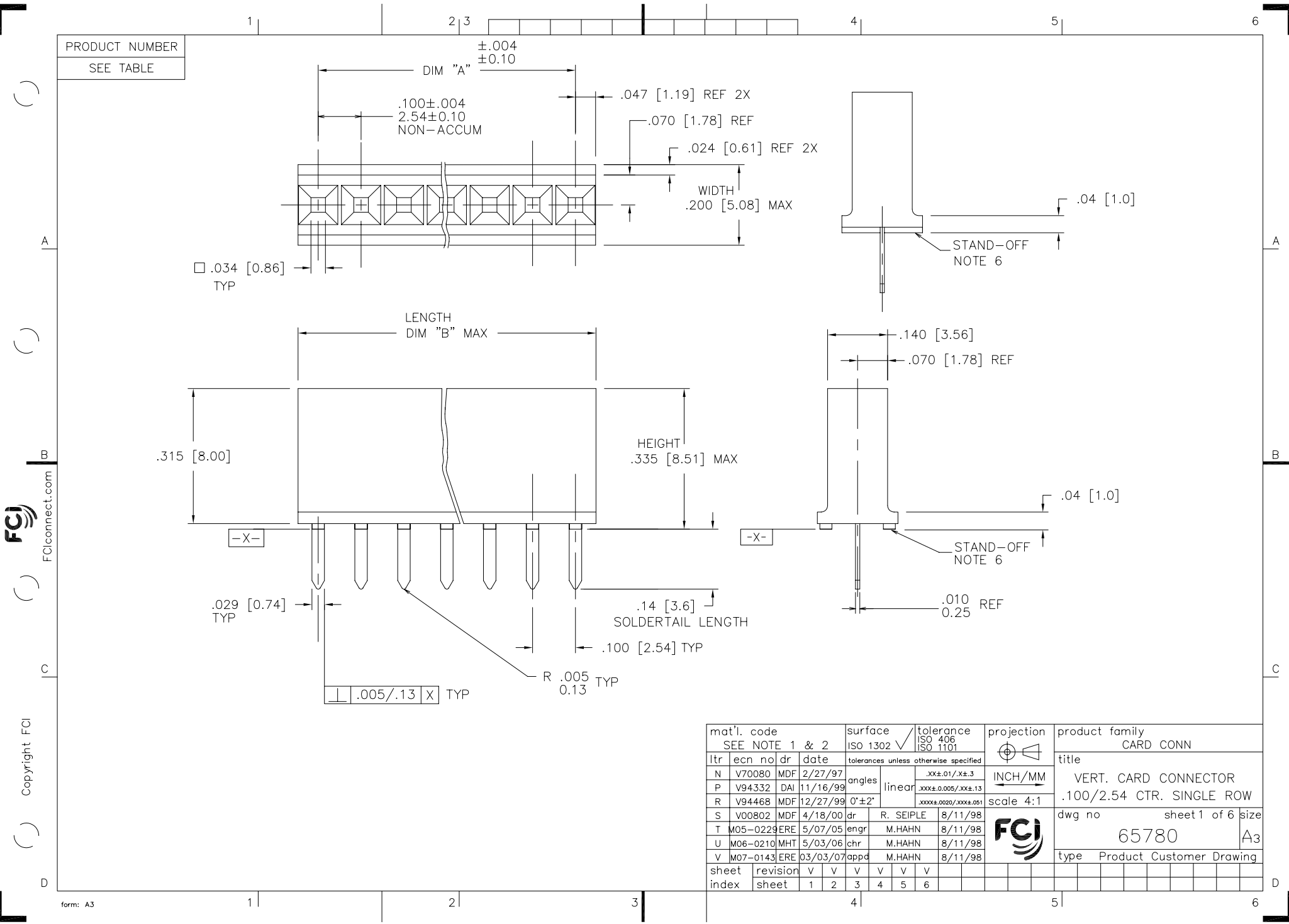
Contact us

Tel: +86-755-8981 8866 Fax: +86-755-8427 6832

Email & Skype: info@chipsmall.com Web: www.chipsmall.com

Address: A1208, Overseas Decoration Building, #122 Zhenhua RD., Futian, Shenzhen, China





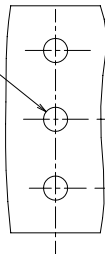
PRODUCT NUMBER
SEE TABLE

FCI
FCIconnect.com
Copyright FCI

mat'l. code SEE NOTE 1 & 2		surface ISO 1302 ✓		tolerance ISO 406 ISO 1101		projection ⊕		product family CARD CONN	
ltr	ecn	no	dr	date	tolerances unless otherwise specified		title		
N	V70080	MDF	2/27/97		angles	linear	.XX±.01/.X±.3	INCH/MM	VERT. CARD CONNECTOR
P	V94332	DAI	11/16/99				.XXX±.0.005/.XX±.13	scale 4:1	.100/2.54 CTR. SINGLE ROW
R	V94468	MDF	12/27/99	0'±2'			.XXXX±.0020/.XXX±.051		
S	V00802	MDF	4/18/00	dr	R. SEIPLE		8/11/98		dwg no
T	M05-0229	ERE	5/07/05	enr	M.HAHN		8/11/98		sheet 1 of 6 size
U	M06-0210	MHT	5/03/06	chr	M.HAHN		8/11/98		65780
V	M07-0143	ERE	03/03/07	appd	M.HAHN		8/11/98		A3
sheet	revision	V	V	V	V	V	V		type
index	sheet	1	2	3	4	5	6		Product Customer Drawing

PRODUCT NUMBER
SEE TABLE

$\varnothing .035 \pm .003$
 $0.89 \pm .08$
TYP



.100
2.54
NON-ACCUM.
TYP

RECOMMENDED P. C. B.
SCALE 4:1

NOTES.

1. HOUSING MATERIAL: FILLED POLYESTER,
FLAME RETARDANT PER UL 94V-0.
COLOR: BLACK.
2. TERMINAL MATERIAL AND PLATING: SEE TABULATION
3. RECOMMENDED PIN SIZE $.25 \pm .001 / 0.65 \pm 0.03$.
4. RECOMMENDED PIN LENGTH: $.210 \pm .020 / 5.33 \pm 0.51$.
5. MARK FCI PART NUMBER AND DATE CODE LEGIBLE ON TUBE LABEL.
6. STAND-OFF CONFIGURATION BUMP OR RIB AT MANUFACTURERS OPTION.
7. SOLDER TAIL IS POST PLATED GOLD.
THE "V" SHAPED TIP OF SOLDER TAIL ALLOWED BARE EDGES DUE TO CUT-OFF
8. ADD "LF" SUFFIX AT THE END OF PART NUMBER FOR LEAD FREE OPTION.
9. THIS PRODUCT MEETS EUROPEAN UNION DIRECTIVES AND OTHER
COUNTRY REGULATION AS DESCRIBED IN GS-22-008.
10. THE HOUSING WILL WITHSTAND EXPOSURE TO 260°C PEAK TEMPERATURE
FOR 15 SECONDS IN A WAVE SOLDER APPLICATION WITH A 1.5mm
MINIMUM THICK CIRCUIT BOARD. SEE APPLICATION NOTES/PROCEDURES
IF THEY ARE AVAILABLE.
11. "THIS PRODUCT HAS 100% TIN PLATING IN THE INTERFACE AND
HAS NOT BEEN TESTED FOR WHISKER GROWTH IN ALL INTERCONNECT
ENVIRONMENTS."



Copyright FCI

mat'l. code		surface ISO 1302 <input checked="" type="checkbox"/>		tolerance ISO 406 ISO 1101		projection 		product family CARD CONN	
ltr	ecn	no	dr	date	tolerances unless otherwise specified		title		
V					angles	linear	INCH/MM		VERT. CARD CONNECTOR
					0°±2'		scale 4:1		.100/2.54 CTR. SINGLE ROW
					dr	R. SEIPLE	8/11/98	dwg no	
					enr	M.HAHN	8/11/98	sheet 2 of 6 size	
					chr	M.HAHN	8/11/98	65780 A3	
					appd	M.HAHN	8/11/98	type Product Customer Drawing	
sheet index	revision sheet								

PRODUCT NO	SIZE	DIM A	DIM B	MATERIAL AND PLATING	LEAD FREE OPTION		
65780-001				UNASSIGNED			
-002	1 X 2	.100/2.54	.200/5.08				
-003	1 X 3	.200/5.08	.300/7.62	BODY MATERIAL: BRASS BODY PLATING: 40u"/1.02u MIN THICKNESS C. I. GOLD INSIDE CONTACT AREA. 10u"/.25u MIN GOLD ON REST OF TERMINAL BODY OVER 50u"/1.27u MIN NICKEL. SPRING MAT'L: BeCu HEAT TREATED SPRING PLATING: GOLD FLASH	NOTE 8, 9		
-004	1 X 4	.300/7.62	.400/10.16				
-005	1 X 5	.400/10.16	.500/12.70				
-006	1 X 6	.500/12.70	.600/15.24				
-007	1 X 7	.600/15.24	.700/17.78				
-008	1 X 8	.700/17.78	.800/20.32				
-009	1 X 9	.800/20.32	.900/22.86				
-010	1 X 10	.900/22.86	1.000/25.40				
-011	1 X 11	1.000/25.40	1.100/27.94				
-012	1 X 12	1.100/27.94	1.200/30.48				
-013	1 X 13	1.200/30.48	1.300/33.02				
-014	1 X 14	1.300/33.02	1.400/35.56				
-015	1 X 15	1.400/35.56	1.500/38.10				
-016	1 X 16	1.500/38.10	1.600/40.64				
-017	1 X 17	1.600/40.64	1.700/43.18				
-018	1 X 18	1.700/43.18	1.800/45.72				
-019	1 X 19	1.800/45.72	1.900/48.26				
-020	1 X 20	1.900/48.26	2.000/50.08				
-021	1 X 21	2.000/50.08	2.100/53.34				
-022	1 X 22	2.100/53.34	2.200/55.88				
-023	1 X 23	2.200/55.88	2.300/58.42				
-024	1 X 24	2.300/58.42	2.400/60.96				
-025	1 X 25	2.400/60.96	2.500/63.50				
-026	1 X 26	2.500/63.50	2.600/66.04				
-027	1 X 27	2.600/66.04	2.700/68.58				
-028	1 X 28	2.700/68.58	2.800/71.12				
65780-029	1 X 29	2.800/71.12	2.900/73.66				NOTE 8, 9

OBS



FCIconnect.com

Copyright FCI

mat'l. code		surface ISO 1302 ✓		tolerance ISO 406 ISO 1101		projection 		product family CARD CONN	
ltr		ecn no dr		date		tolerances unless otherwise specified		title	
V						.XX±.01/.X±.3		INCH/MM	
						linear .XXX±.0.005/.XX±.13		VERT. CARD CONNECTOR	
						0'±2'		.100/2.54 CTR. SINGLE ROWY	
						.XXXX±.0020/.XXX±.051		scale 4:1	
				dr R. SEIPLE 8/11/98				dwg no sheet 3 of 6 size	
				enr M.HAHN 8/11/98				65780 A3	
				chr M.HAHN 8/11/98					
				appd M.HAHN 8/11/98				type Product Customer Drawing	
sheet index		revision sheet							

PRODUCT NO	SIZE	DIM A	DIM B	MATERIAL AND PLATING	LEAD FREE OPTION
65780-030	1 X 30	2.900/73.66	3.000/76.20	UNASSIGNED	
-031	1 X 31	3.000/76.20	3.100/78.74	BODY MATERIAL: BRASS BODY PLATING: 40u"/1.02u MIN THICKNESS C. I. GOLD INSIDE CONTACT AREA. 10u"/.25u MIN GOLD ON REST OF TERMINAL BODY OVER 50u"/1.27u MIN NICKEL. SPRING MAT'L: BeCu HEAT TREATED SPRING PLATING: GOLD FLASH	NOTE 8, 9 ↑ ↓ NOTE 8, 9
-032	1 X 32	3.100/78.74	3.200/81.28		
-033	1 X 33	3.200/81.28	3.300/83.82		
-034	1 X 34	3.300/83.82	3.400/86.36		
-035	1 X 35	3.400/86.36	3.500/88.90		
-036	1 X 36	3.500/88.90	3.600/91.44		
-037					
A -038	1 X 2	.100/2.54	.200/5.08	BODY MATERIAL: BRASS BODY PLATING: 100u"/2.54u THICK Sn PLATE. SPRING MAT'L: BeCu HEAT TREATED SPRING PLATING: 30u"/.76u MIN ELECTROLESS TIN.	NOTE 8, 9 & 11 ↑ ↓ NOTE 8, 9 & 11
-039	1 X 3	.200/5.08	.300/7.62		
-040	1 X 4	.300/7.62	.400/10.16		
-041	1 X 5	.400/10.16	.500/12.70		
-042	1 X 6	.500/12.70	.600/15.24		
-043	1 X 7	.600/15.24	.700/17.78		
-044	1 X 8	.700/17.78	.800/20.32		
-045	1 X 9	.800/20.32	.900/22.86		
-046	1 X 10	.900/22.86	1.000/25.40		
-047	1 X 11	1.000/25.40	1.100/27.94		
-048	1 X 12	1.100/27.94	1.200/30.48		
-049	1 X 13	1.200/30.48	1.300/33.02		
-050	1 X 14	1.300/33.02	1.400/35.56		
-051	1 X 15	1.400/35.56	1.500/38.10		
-052	1 X 16	1.500/38.10	1.600/40.64		
-053	1 X 17	1.600/40.64	1.700/43.18		
-054	1 X 18	1.700/43.18	1.800/45.72		
-055	1 X 19	1.800/45.72	1.900/48.26		
-056	1 X 20	1.900/48.26	2.000/50.80		
-057	1 X 21	2.000/50.80	2.100/53.34		
65780-058	1 X 22	2.100/53.34	2.200/55.88		



Copyright FCI

mat'l. code		surface ISO 1302 ✓		tolerance ISO 406 ISO 1101		projection ⊕		product family CARD CONN	
ltr	ecn no	dr	date	tolerances unless otherwise specified		INCH/MM		title	
V				angles	linear	.XX±.01/.X±.3 .XXX±.0.005/.XX±.13 XXXX±.0020/.XXX±.051		VERT. CARD CONNECTOR .100/2.54 CTR. SINGLE ROWY	
				0'±2'		scale 4:1		dwg no 65780	
				dr	R. SEIPLE	8/11/98		sheet 4 of 6 size A3	
				enr	M.HAHN	8/11/98		type Product Customer Drawing	
				chr	M.HAHN	8/11/98			
				appd	M.HAHN	8/11/98			
sheet index	revision sheet								

PRODUCT NO	SIZE	DIM A	DIM B	MATERIAL AND PLATING	LEAD FREE OPTION
65780-059	1 X 23	2.200/55.88	2.300/58.42	UNASSIGNED	
-060	1 X 24	2.300/58.42	2.400/60.96	BODY MATERIAL: BRASS BODY PLATING: 100u"/2.54u THICK Sn PLATE. SPRING MAT'L: BeCu HEAT TREATED SPRING PLATING: 30u"/.76u MIN ELECTROLESS TIN.	NOTE 8, 9 & 11 ↓ NOTE 8, 9 & 11
-061	1 X 25	2.400/60.96	2.500/63.50		
-062	1 X 26	2.500/63.50	2.600/66.04		
-063	1 X 27	2.600/66.04	2.700/68.58		
-064	1 X 28	2.700/68.58	2.800/71.12		
-065	1 X 29	2.800/71.12	2.900/73.66		
-066	1 X 30	2.900/73.66	3.000/76.20		
-067	1 X 31	3.000/76.20	3.100/78.74		
-068	1 X 32	3.100/78.74	3.200/81.28		
-069	1 X 33	3.200/81.28	3.300/83.82		
-070	1 X 34	3.300/83.82	3.400/86.36		
-071	1 X 35	3.400/86.36	3.500/88.90		
-072	1 X 36	3.500/88.90	3.600/91.44		
-073				UNASSIGNED	
-074	1 X 2	.100/2.54	.200/5.08		
-075	1 X 3	.200/5.08	.300/7.62	BODY MATERIAL: Cu BODY PLATING: 10u"/.25u Au FLASH INSIDE CONTACT AREA ONLY, WITH .001/.03 MIN HIGH Au DOT. SPRING MAT'L: BeCu HEAT TREATED SPRING PLATING: GOLD FLASH	NOTE 8, 9 ↓ NOTE 8, 9
-076	1 X 4	.300/7.62	.400/10.16		
-077	1 X 5	.400/10.16	.500/12.70		
-078	1 X 6	.500/12.70	.600/15.24		
-079	1 X 7	.600/15.24	.700/17.78		
-080	1 X 8	.700/17.78	.800/20.32		
-081	1 X 9	.800/20.32	.900/22.86		
-082	1 X 10	.900/22.86	1.000/25.40		
-083	1 X 11	1.000/25.40	1.100/27.94		
-084	1 X 12	1.100/27.94	1.200/30.48		
-085	1 X 13	1.200/30.48	1.300/33.02		
-086	1 X 14	1.300/33.02	1.400/35.56		
65780-087	1 X 15	1.400/35.56	1.500/38.10		

FCJ
FCJconnect.com

Copyright FCJ

mat'l. code		surface ISO 1302 ✓	tolerance ISO 406 ISO 1101	projection 	product family CARD CONN
ltr	ecn no	dr	date	tolerances unless otherwise specified	title
V				angles linear .XX±.01/.X±.3 .XXX±.0.005/.XX±.13 XXXX±.0020/.XXX±.051	VERT. CARD CONNECTOR .100/2.54 CTR. SINGLE ROW
				0'±2'	scale 4:1
				dr R. SEIPLE 8/11/98	dwg no 65780 sheet 5 of 6 size A3
				enr M.HAHN 8/11/98	
				chr M.HAHN 8/11/98	
				appd M.HAHN 8/11/98	type Product Customer Drawing
sheet index	revision sheet				

PRODUCT NO	SIZE	DIM A	DIM B	MATERIAL AND PLATING	LEAD FREE OPTION
65780-088	1 X 16	1.500/38.10	1.600/40.64	UNASSIGNED	
-089	1 X 17	1.600/40.64	1.700/43.18	BODY MATERIAL: Cu BODY PLATING: 10u"/.25u Au FLASH INSIDE CONTACT AREA ONLY, WITH .001/.03 MIN HIGH Au DOT. SPRING MAT'L: BeCu HEAT TREATED SPRING PLATING: GOLD FLASH	NOTE 8, 9
-090	1 X 18	1.700/43.18	1.800/45.72		
-091	1 X 19	1.800/45.72	1.900/48.26		
-092	1 X 20	1.900/48.26	2.000/50.08		
-093	1 X 21	2.000/50.08	2.100/53.34		
-094	1 X 22	2.100/53.34	2.200/55.88		
-095	1 X 23	2.200/55.88	2.300/58.42		
-096	1 X 24	2.300/58.42	2.400/60.96		
-097	1 X 25	2.400/60.96	2.500/63.50		
-098	1 X 26	2.500/63.50	2.600/66.04		
-099	1 X 27	2.600/66.04	2.700/68.58		
-100	1 X 28	2.700/68.58	2.800/71.12		
-101	1 X 29	2.800/71.12	2.900/73.66		
-102	1 X 30	2.900/73.66	3.000/76.20		
-103	1 X 31	3.000/76.20	3.100/78.74		
-104	1 X 32	3.100/78.74	3.200/81.28		
-105	1 X 33	3.200/81.28	3.300/83.82		
-106	1 X 34	3.300/83.82	3.400/86.36		
-107	1 X 35	3.400/86.36	3.500/88.90		
-108	1 X 36	3.500/88.90	3.600/91.44		
-109	1 X 4	.300/7.62	.400/10.16	BODY MATERIAL: BRASS BODY PLATING: 100μ"/2.54μ THICK Sn PLATE. SPRING MAT'L: BeCu HEAT TREATED SPRING PLATING: 30u"/.76u MIN ELECTROLESS TIN.	NOTE 8, 9 & 11
65780-110	1 X 5	.400/10.16	.500/12.70	BODY MATERIAL: BRASS BODY PLATING: 40μ"/1.02μ" Au IN CONTACT AREA ONLY, REMAINDER OF BODY .003μ"/.08μ" Au. SOLDER TAIL: POST PLATED GOLD SPRING: BeCu HEAT TREATED SPRING PLATING: GOLD FLASH	NOTE 8, 9
65780-111	1 X 8	.700/17.78	.800/20.32		NOTE 7



FCJconnect.com

Copyright FCJ

mat'l. code		surface ISO 1302 ✓		tolerance ISO 406 ISO 1101		projection ⊕		product family CARD CONN	
ltr	ecn	no	dr	date		tolerances unless otherwise specified		title	
V						linear	INCH/MM	VERT. CARD CONNECTOR	
				0'±2'		linear	scale 4:1	.100/2.54 CTR. SINGLE ROW	
				dr	R. SEIPLE	8/11/98		dwg no	
				enr	M.HAHN	8/11/98		sheet 6 of 6 size	
				chr	M.HAHN	8/11/98		65780 A3	
				appd	M.HAHN	8/11/98		type Product Customer Drawing	
sheet index	revision sheet								

form: A3