



Chipsmall Limited consists of a professional team with an average of over 10 year of expertise in the distribution of electronic components. Based in Hongkong, we have already established firm and mutual-benefit business relationships with customers from,Europe,America and south Asia,supplying obsolete and hard-to-find components to meet their specific needs.

With the principle of “Quality Parts,Customers Priority,Honest Operation,and Considerate Service”,our business mainly focus on the distribution of electronic components. Line cards we deal with include Microchip,ALPS,ROHM,Xilinx,Pulse,ON,Everlight and Freescale. Main products comprise IC,Modules,Potentiometer,IC Socket,Relay,Connector.Our parts cover such applications as commercial,industrial, and automotives areas.

We are looking forward to setting up business relationship with you and hope to provide you with the best service and solution. Let us make a better world for our industry!



Contact us

Tel: +86-755-8981 8866 Fax: +86-755-8427 6832

Email & Skype: info@chipsmall.com Web: www.chipsmall.com

Address: A1208, Overseas Decoration Building, #122 Zhenhua RD., Futian, Shenzhen, China

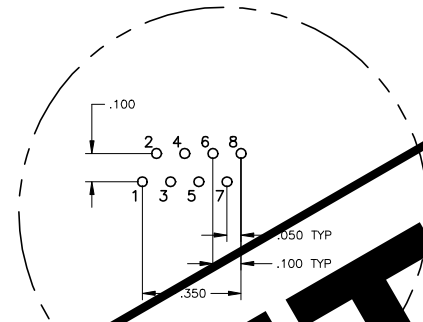
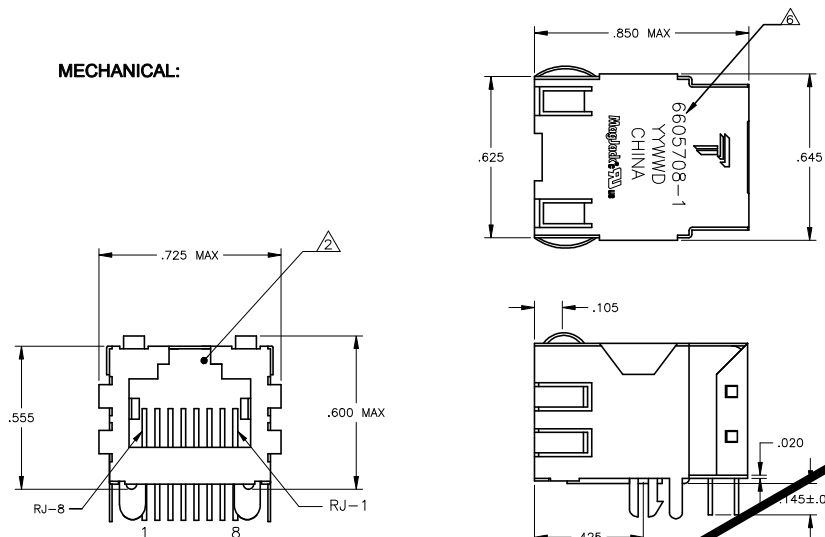


THIS DRAWING AND THE SUBJECT MATTER SHOWN THEREON ARE CONFIDENTIAL AND THE PROPERTY OF BEL/STEWART/TRP CONNECTOR AND SHALL NOT BE REPRODUCED, COPIED, OR USED IN ANY MANNER WITHOUT THE WRITTEN CONSENT OF TRP CONNECTOR.

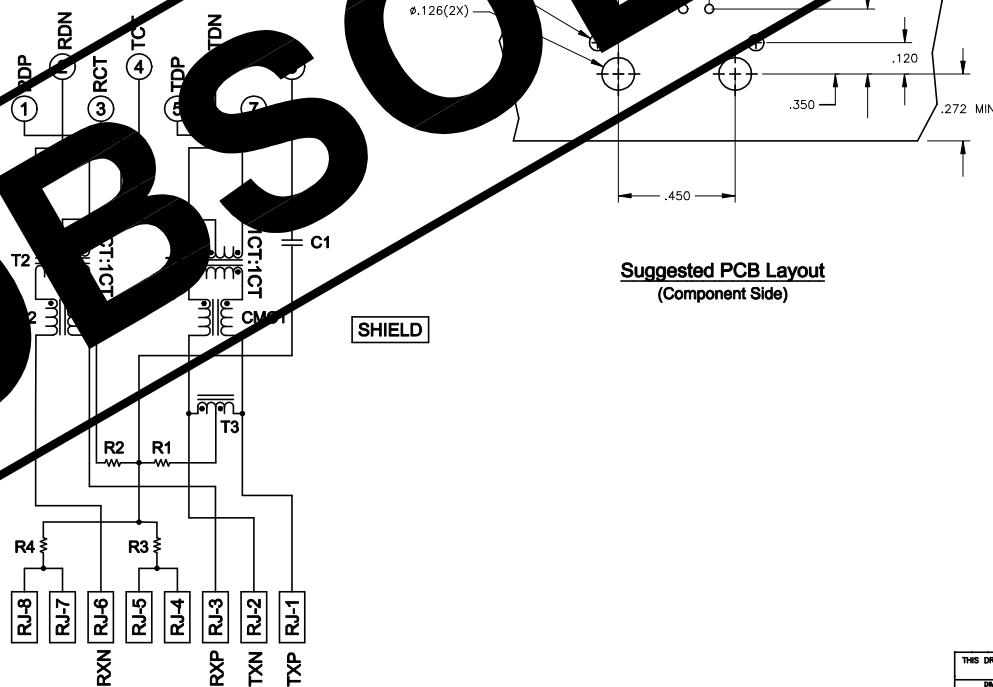
PRODUCT MAY BE PROTECTED BY ONE OR MORE OF THE FOLLOWING US PATENTS:
 5736910 5939955 6425781 6428361 6554638 6840817 7123117
 7429195 7717749 7808751 6217391 6149050 7924130

REVISIONS			
REV	DESCRIPTION	DATE	APP'D
1	EC-1411035 COMPANY LOGO CHANGE	30DEC2014	ST TL

MECHANICAL:



714 SERIES MAGNETIC CIRCUIT



C1 = 1000 pF, 2KV CAPACITOR
 R1-R4 = 75 OHMS, 1/16W RESISTORS

- 1. MATERIALS:
 HOUSING - THERMOPLASTIC PET POLYESTER FLAMMABILITY RATING UL 94V-0.
 SHIELD - .01 THICK, C26800 BRASS PREPLATED WITH 30μINCH MIN SEMI-BRIGHT NICKEL. SOLDER TABS POST DIPPED WITH 100μINCH MIN SAC SOLDER.
 CONTACTS - .0157 X 0.018" PHOSPHOR BRONZE, 50μINCH MIN OVERALL THICKNESS. UNDERPLATE WITH SELECT 50μINCH MIN HARD GOLD FINISH PLATE. SOLDER TAILS WITH 100μINCH MIN MATTE TIN AND/OR SAC SOLDER DIP.
- 2. RJ45 JACK CAVITY CONFORMS TO FCC RULES AND REGULATIONS PART 68, SUB PART F.
- 3. PERFORMANCE:
 RETURN LOSS: 100 OHMS
 INSERTION LOSS: 1.1dB MAX FROM 0.5MHz TO 100MHz
 RETURN LOSS (RL): 18dB MIN FROM 0.5MHz TO 30MHz
 OPEN CIRCUIT INDUCTIVE REACTANCE (SCL): 350μH MIN @100kHz, 0.1VRMS, 8mA DC BIAS, 100μINCH MIN TX AND RX
 PERFORMANCE:
 RETURN LOSS (RL): 1.1dB MAX FROM 0.5MHz TO 100MHz
 INSERTION LOSS (IL): 18dB MIN FROM 0.5MHz TO 30MHz
 CROSSTALK ATTENUATION: 35dB MIN FROM 0.5MHz TO 40MHz
 COMMON MODE REJECTION RATIO (CMRR): 30dB MIN FROM 0.5MHz TO 100MHz
 ISOLATION VOLTAGE: 2250VDC (MAX) FOR 60 SECONDS WITH A RISE TIME OF 500V/SEC.
- 4. OPERATING TEMPERATURE: FROM 0° TO -70°C.
- 5. INDICATED CONNECTIONS ARE FOR NIC CONFIGURATION. THE MAGNETICS ARE ASYMMETRIC, AND ARE NOT AUTO-MDI/MDIX CAPABLE.
- 6. TRP CONNECTOR LOGO, PART NUMBER, DATE CODE, COUNTRY OF ORIGIN AND AGENCY APPROVAL MARKING IN APPROXIMATE LOCATION SHOWN.
- 7. THESE PARTS ARE RECOMMENDED FOR WAVE SOLDERING PROCESS, PREHEAT TEMPERATURE IS 120°C TO 160°C, 120 SECONDS TO 180 SECONDS, PEAK WAVE SOLDERING TEMPERATURE IS 260°C MAX, 10 SECONDS MAX.
- 8. OBSOLETE PARTS: OBSOLETE CIS STREAMLINING PER D.RENAUD/D.SINISI

OBSOLETE

Suggested Panel Cutout

Suggested PCB Layout (Component Side)

<input type="checkbox"/> OBSOLETE	NO	6605708-2
<input type="checkbox"/> OBSOLETE	YES	6605708-1
<input type="checkbox"/> OBSOLETE	2KV DECOUPLING CAPACITOR	PART NUMBER

THIS DRAWING IS A CONTROLLED DOCUMENT.		REV. 1		DATE	
DIMENSIONS: INCHES		MATERIALS: T. FARELE - DOCKS		DRAWING NO.	
DRAWING NO.		DATE		SCALE	
PRODUCT SPEC		APPROXIMATION SPEC		CUSTOMER DRAWING	
108-2100		MAGJACK SINGLE NON-POE		1X1 714 10/100 TAB UP W/O LED	
DRAWING NO.		DATE		REV. E	
C-6605708		1		1	