



Chipsmall Limited consists of a professional team with an average of over 10 year of expertise in the distribution of electronic components. Based in Hongkong, we have already established firm and mutual-benefit business relationships with customers from,Europe,America and south Asia,supplying obsolete and hard-to-find components to meet their specific needs.

With the principle of “Quality Parts,Customers Priority,Honest Operation,and Considerate Service”,our business mainly focus on the distribution of electronic components. Line cards we deal with include Microchip,ALPS,ROHM,Xilinx,Pulse,ON,Everlight and Freescale. Main products comprise IC,Modules,Potentiometer,IC Socket,Relay,Connector.Our parts cover such applications as commercial,industrial, and automotives areas.

We are looking forward to setting up business relationship with you and hope to provide you with the best service and solution. Let us make a better world for our industry!



Contact us

Tel: +86-755-8981 8866 Fax: +86-755-8427 6832

Email & Skype: info@chipsmall.com Web: www.chipsmall.com

Address: A1208, Overseas Decoration Building, #122 Zhenhua RD., Futian, Shenzhen, China



C. Westoby 5-21-92
APPROVED BY/DATE

9
REV

SAFETY ORGANIZATION(S).

THIS FILTER HAS BEEN FORMALLY RECOGNIZED, CERTIFIED OR APPROVED BY THE LISTED AGENCY. THEREFORE, ALL TEST/REQUIREMENTS SPECIFIED IN THE LATEST REVISION OF THE FOLLOWING AGENCY STANDARDS HAVE BEEN MET.

UL RECOGNIZED
CSA CERTIFIED
VDE APPROVED
SEV APPROVED

UL 544
CSA 22.2, NO.0,0.4,8
VDE 565-3
SEV 1055/TP1977/5.1.1

OPERATING SPECIFICATIONS.

LINE VOLTAGE/CURRENT:

5 AMP., 120/250 VAC
6 AMP./40°C, 250 VAC
50-60Hz
40°C

LINE FREQUENCY:
MAX. CASE RISE @ RATED CURRENT,
MAX. LEAKAGE CURRENT, EACH
LINE TO GROUND

OPERATING AMBIENT TEMP. RANGE:
-10°C TO +40°C @ RATED CURRENT, I_r

IN AN AMBIENT, T_a , HIGHER THAN 40°C, THE MAXIMUM OPERATING CURRENT, I_o , IS AS FOLLOWS:

$$I_o = I_r \sqrt{\frac{85 - T_a}{45}}$$

RELIABILITY SPECIFICATIONS.

STORAGE TEMPERATURE:
HUMIDITY:
CURRENT OVERLOAD TEST:

-40°C TO +85°C
21 DAYS @ 40°C 95% RH
6 TIMES RATED CURRENT FOR 8 SECONDS

TEST SPECIFICATIONS.

INDUCTANCE:
CAPACITANCE: (MEASURED @ 1 KHz, 0.25 VAC MAX., 25°C ±1°C)
LINE TO LINE.
DISCHARGE RESISTOR,
LINE/GROUND AND LINE/LINE
INSULATION RESISTANCE
(R/O DISCHARGE RESISTOR)

RECOMMENDED RECEIVING INSPECTION HIPOT:
LINES TO GROUND: 2250 VDC FOR 1 MINUTE
LINE TO LINE: 1450 VDC FOR 1 MINUTE

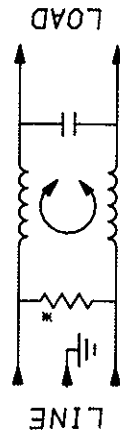
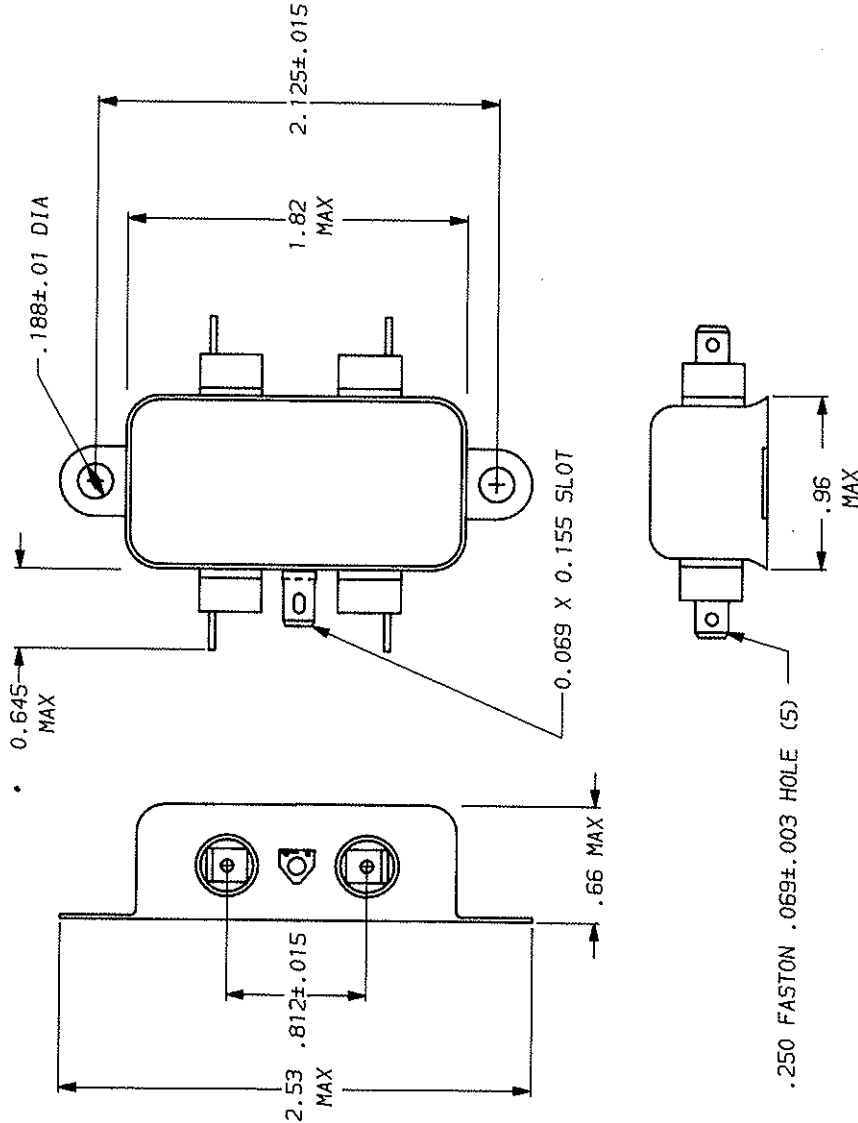
FILTER APPROVAL.
THE BEST WAY TO SELECT AND QUALIFY A FILTER IS FOR YOUR ENGINEERING TO TEST THE UNIT IN YOUR EQUIPMENT.

TOLERANCE EXCEPT AS NOTED
DECIMAL: .XXX .XX .X ANGLES ±1°
ENGLISH: ±.025
METRIC: ±
MATERIAL:
AS SUPPLIED

FINISH:
AS SUPPLIED

50a - 50a MINIMUM INSERTION LOSS						
FREQUENCY MHz	.15	.2	.5	1.0	10	30
COMMON	9	11	16	20	23	18

This document is proprietary to CORCOM INC. and is not to be reproduced nor used for manufacturing purposes except on CORCOM's order or prior written consent.



*RESISTOR ADDED TO PRODUCT BUILT AFTER 3-30-92 (9212).



LIBERTYVILLE, IL 60048

POWER LINE FILTER

SCALE: NTS 9-12-89
REV. NO. 6EH1.09
PRG. NO. 9-12-89
TDL
CW