



Chipsmall Limited consists of a professional team with an average of over 10 year of expertise in the distribution of electronic components. Based in Hongkong, we have already established firm and mutual-benefit business relationships with customers from,Europe,America and south Asia,supplying obsolete and hard-to-find components to meet their specific needs.

With the principle of “Quality Parts,Customers Priority,Honest Operation,and Considerate Service”,our business mainly focus on the distribution of electronic components. Line cards we deal with include Microchip,ALPS,ROHM,Xilinx,Pulse,ON,Everlight and Freescale. Main products comprise IC,Modules,Potentiometer,IC Socket,Relay,Connector.Our parts cover such applications as commercial,industrial, and automotives areas.

We are looking forward to setting up business relationship with you and hope to provide you with the best service and solution. Let us make a better world for our industry!



## Contact us

Tel: +86-755-8981 8866 Fax: +86-755-8427 6832

Email & Skype: info@chipsmall.com Web: www.chipsmall.com

Address: A1208, Overseas Decoration Building, #122 Zhenhua RD., Futian, Shenzhen, China



DESCRIPTION	APP'D./DATE	REV
C. W. ...	8-27-90	1

**SAFETY ORGANIZATION(S):**

THIS FILTER HAS BEEN FORMALLY RECOGNIZED, CERTIFIED OR APPROVED BY THE LISTED AGENCY. THEREFORE, ALL TEST/REQUIREMENTS SPECIFIED IN THE LATEST REVISION OF THE FOLLOWING AGENCY STANDARDS HAVE BEEN MET.

- UL RECOGNIZED CSA CERTIFIED OPERATING SPECIFICATIONS. LINE VOLTAGE/CURRENT,
  - UL 1283 CSA 22.2 NO. 0, 0.4, 8
  - 20 OR 30 AMP, 250VAC PHASE TO NEUTRAL/GND
  - 20 OR 30 AMP, 440VAC PHASE TO PHASE
- LINE FREQUENCY, 50-60Hz
- MAX. LEAKAGE CURRENT, EACH LINE TO GROUND
  - 1.4 ma @ 120 V 60 Hz
  - 3.4 ma @ 250 V 50 Hz
- OPERATING AMBIENT TEMP. RANGE, -10°C TO +40°C @ RATED CURRENT, I<sub>r</sub>
- IN AN AMBIENT, T<sub>a</sub>, HIGHER THAN 40°C, THE MAXIMUM OPERATING CURRENT, I<sub>o</sub>, IS AS FOLLOWS:
 
$$I_o = I_r \sqrt{\frac{85 - T_a}{45}}$$

**RELIABILITY SPECIFICATIONS:**

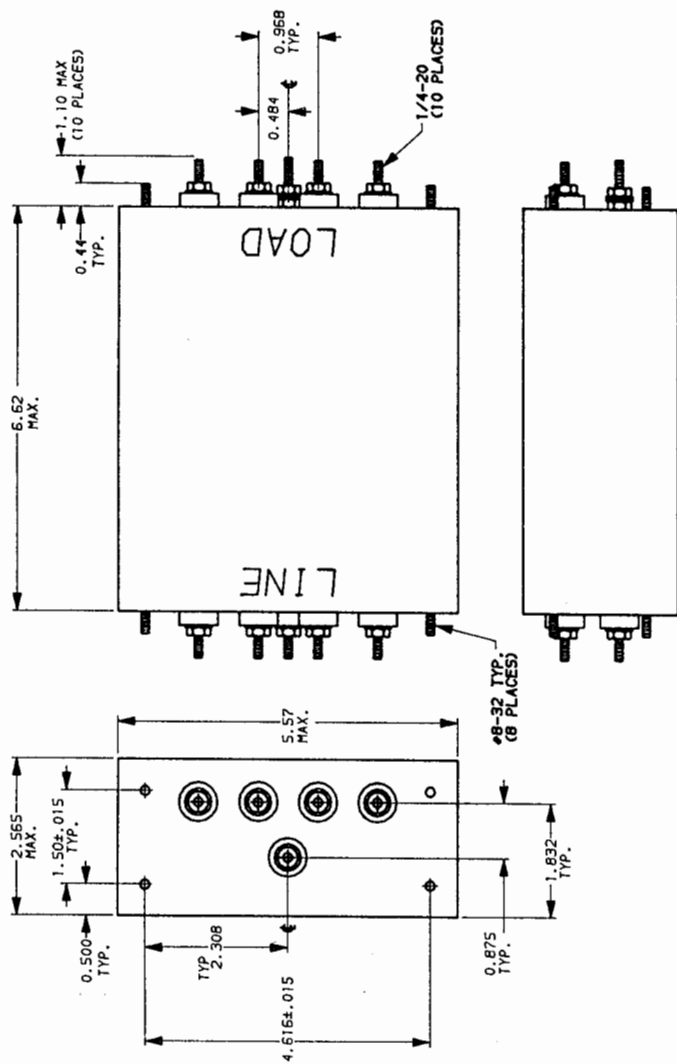
- STORAGE TEMPERATURE, -25°C to +85°C
- HUMIDITY, 21 DAYS @ 40°C 95% RH

**TEST SPECIFICATIONS:**

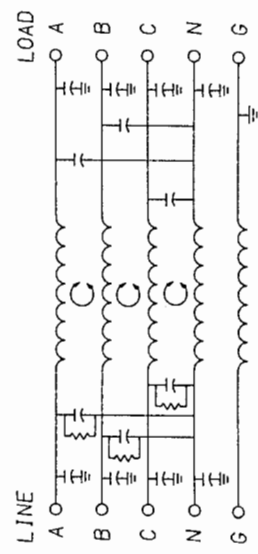
- INDUCTANCE, 20A = 4.44mH NOMINAL 30A = 1.97 mH NOMINAL
- CAPACITANCE: (MEASURED @ 1 KHZ, 0.25 VAC MAX., 25°C ±1°C)
  - PHASE/NEUTRAL TO GROUND, .018uF ±20%
  - PHASE TO NEUTRAL, 3.29uF ±20%
  - DISCHARGE RESISTOR; 110 KΩ
  - PHASE/NEUTRAL TO GROUND AND PHASE TO PHASE INSULATION RESISTANCE, (W/O DISCHARGE RESISTOR) 5000 MΩ (MIN) AT 100 VDC 20°C AND 50% RH

**RECOMMENDED RECEIVING INSPECTION HIPOT:**

- PHASE TO GROUND 1500 VAC FOR 1 MINUTE
- NEUTRAL TO GROUND 1500 VAC FOR 1 MINUTE
- PHASE TO NEUTRAL 1450 VDC FOR 1 MINUTE
- FILTER APPROVAL, THE BEST WAY TO SELECT AND QUALIFY A FILTER IS FOR YOUR ENGINEERING TO TEST THE UNIT IN YOUR EQUIPMENT.



NOTE: UNLESS OTHERWISE SPECIFIED, TOLERANCE TO BE ±.045



50Ω - 50n (MINIMUM) INSERTION LOSS	
FREQUENCY MHZ	COMMON
.05	22 39 55 56 65 65 54
.15	15 30 55 55 61 63 50
.50	20 50 65 65 65 60 52
1.0	5 43 65 65 65 59 49

This document is proprietary to CORCOM INC. and is not to be reproduced nor used for manufacturing purposes except on CORCOM's order or prior written consent.

TOLERANCE EXCEPT AS NOTED  
DECIMAL: .XXX .XX .X ANGLES ± 1°  
ENGLISH: —  
METRIC: ± —

MATERIAL: AS SUPPLIED

FINISH:



POWER LINE FILTER

SCALE	DATE	DRG. NO.	REV.
1:2	5-9-88		
BY	ORIGINATOR		
TDL	CW		