



Chipsmall Limited consists of a professional team with an average of over 10 year of expertise in the distribution of electronic components. Based in Hongkong, we have already established firm and mutual-benefit business relationships with customers from,Europe,America and south Asia,supplying obsolete and hard-to-find components to meet their specific needs.

With the principle of “Quality Parts,Customers Priority,Honest Operation,and Considerate Service”,our business mainly focus on the distribution of electronic components. Line cards we deal with include Microchip,ALPS,ROHM,Xilinx,Pulse,ON,Everlight and Freescale. Main products comprise IC,Modules,Potentiometer,IC Socket,Relay,Connector.Our parts cover such applications as commercial,industrial, and automotives areas.

We are looking forward to setting up business relationship with you and hope to provide you with the best service and solution. Let us make a better world for our industry!



## Contact us

Tel: +86-755-8981 8866 Fax: +86-755-8427 6832

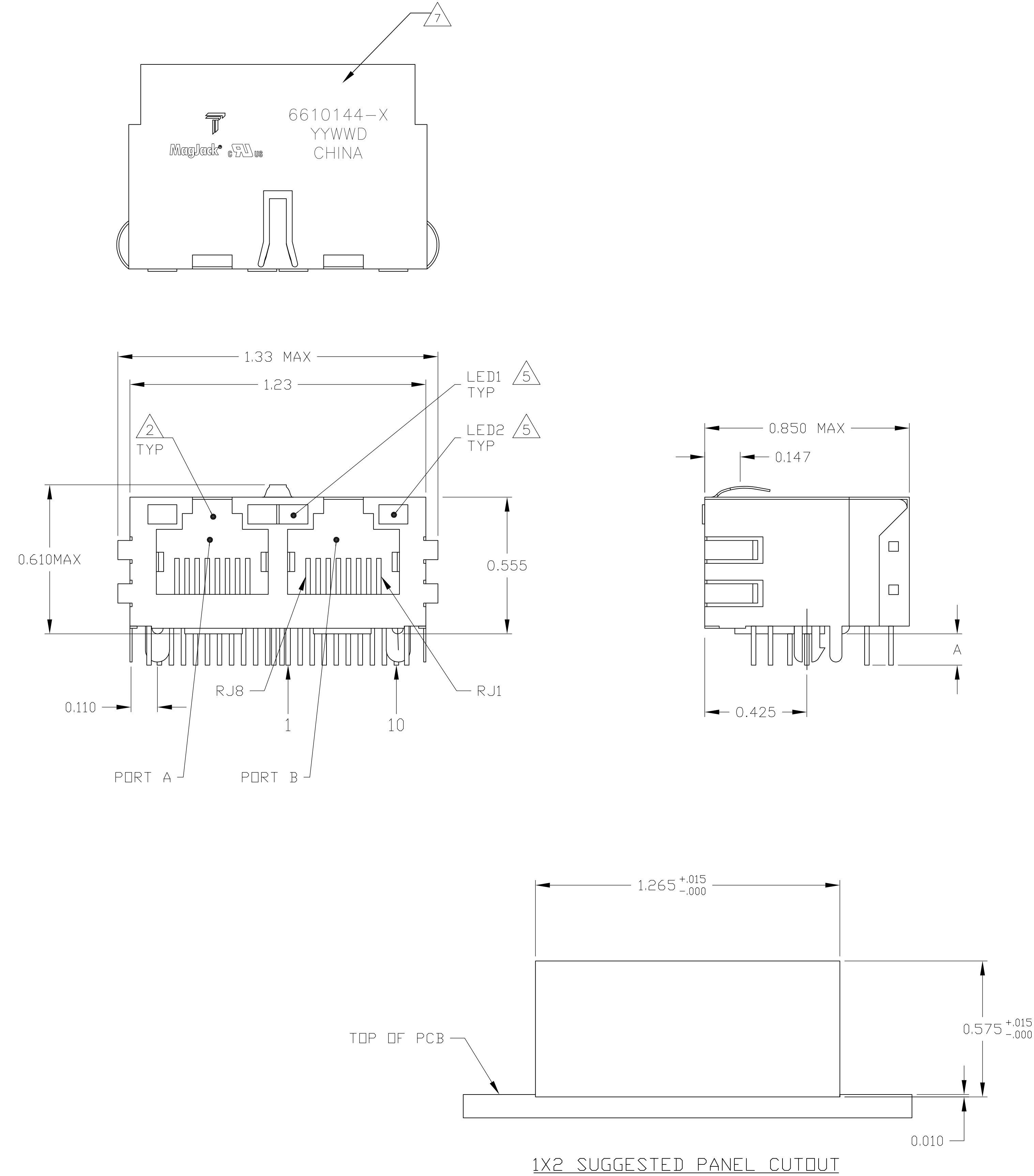
Email & Skype: [info@chipsmall.com](mailto:info@chipsmall.com) Web: [www.chipsmall.com](http://www.chipsmall.com)

Address: A1208, Overseas Decoration Building, #122 Zhenhua RD., Futian, Shenzhen, China




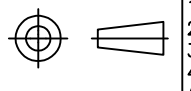


MECHANICAL:

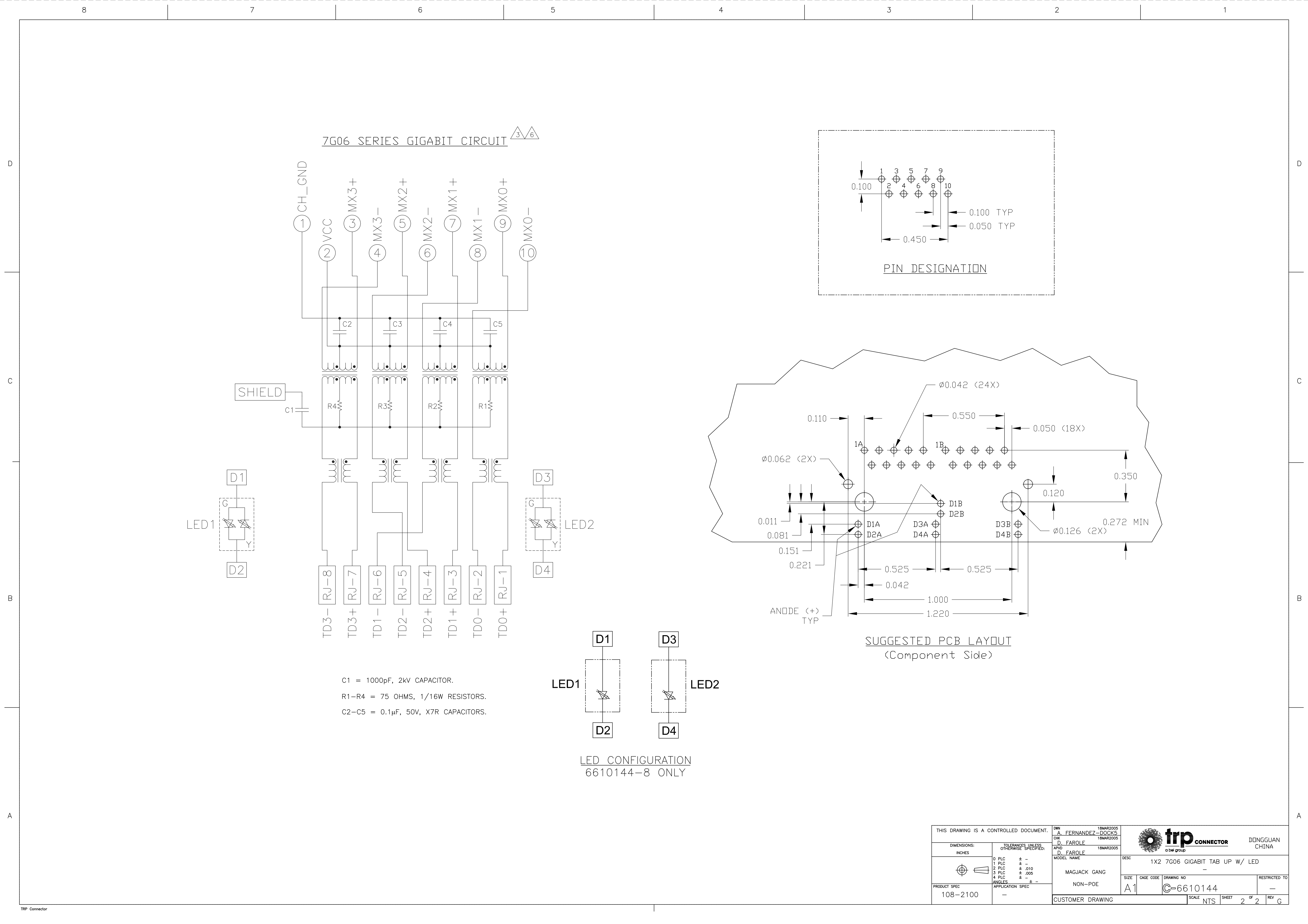


- 1 MATERIALS:
- HOUSING - THERMOPLASTIC PET POLYESTER FLAMMABILITY RATING UL 94V-0.
  - SHIELD - 0.010" THICK, C26800 BRASS PREPLATED WITH 30μINCH MIN SEMI-BRIGHT NICKEL. SOLDER TABS POST DIPPED WITH 100μINCH MIN SAC SOLDER.
  - MOD JACK CONTACTS - 0.0157" X 0.018" PHOSPHOR BRONZE, 50μINCH MIN OVERALL NICKEL UNDERPLATE WITH SELECT 50μINCH MIN HARD GOLD FINISH PLATE. SOLDER TAILS WITH 100μINCH MIN MATTE TIN AND/OR SAC SOLDER DIP.
  - LIGHT EMITTING DIODE(LED) - DIFFUSED EPOXY LENS, 0.020" X 0.020" CARBON STEEL WIREFRAME LEADS PRE-PLATED WITH 80μINCH SILVER OVER 40μINCH NICKEL UNDERPLATE OVER 40μINCH COPPER UNDERPLATE. POST-PLATED WITH 100μINCH MIN MATTE TIN AND/OR SAC SOLDER DIP OR PURE TIN SOLDER DIP.
- 2 RJ45 JACK CAVITY CONFORMS TO FCC RULES AND REGULATIONS PART 68, SUB PART F.
- 3 MAGNETICS
- IMPEDANCE: 100 OHMS
  - TURNS RATIO (CHIP: CABLE): 1:1 ALL FOUR PAIRS
  - OPEN CIRCUIT INDUCTANCE (OCL): 350μH MIN @100kHz, 0.1VRMS, 8mADC BIAS FROM 0°C TO 70°C, ALL FOUR PAIRS
  - ALL FOUR PAIRS BI-DIRECTIONAL
  - PERFORMANCE @ 25°C:
    - INSERTION LOSS (IL): 1.1dB MAX FROM 0.5MHz TO 100MHz
    - RETURN LOSS (RL): 18dB MIN FROM 0.5MHz TO 40MHz
    - 12-20LOG(f/80)dB MIN FROM 40.1MHz TO 100MHz
    - CROSSTALK ATTENUATION: 35dB MIN FROM 0.5MHz TO 40MHz
    - 33-20xLOG(f/50)dB MIN FROM 40.1MHz TO 100MHz
    - COMMON MODE REJECTION RATIO (CMRR): 30dB MIN FROM 0.5MHz TO 100MHz
  - ISOLATION VOLTAGE: 2250VDC (MAX) FOR 60 SECONDS WITH A RISE TIME OF 500V/SEC AND WITH ALL PORTS CONNECTED.
4. OPERATING TEMPERATURE: FROM 0°C TO + 70°C.
- 5 LED IS DRIVEN WITH CONSTANT CURRENT AT APPROX 20mA.  
LED COLOR-DOMINANT WAVELENGTH(λD):GREEN 568nm TYP. AT IF=20mA  
FORWARD VOLTAGE (VF): GREEN 2.2V TYP. AT IF=20mA  
DOMINANT WAVELENGTH(λD):YELLOW 588nm TYP. AT IF=20mA  
FORWARD VOLTAGE (VF): YELLOW 2.1V TYP. AT IF=20mA.
- 6 THE MAGNETICS ARE SYMMETRICAL AND SUPPORT AUTO-MDI/MDIX.
- 7 TRP CONNECTOR LOGO, PART NUMBER, DATE CODE, COUNTRY OF ORIGIN AND AGENCY APPROVAL MARKING IN APPROXIMATE LOCATION SHOWN.
8. THESE PARTS ARE RECOMMENDED FOR WAVE SOLDERING PROCESS, PEAK WAVE SOLDERING TEMPERATURE IS 265°C MAX, 10 SECONDS MAX.

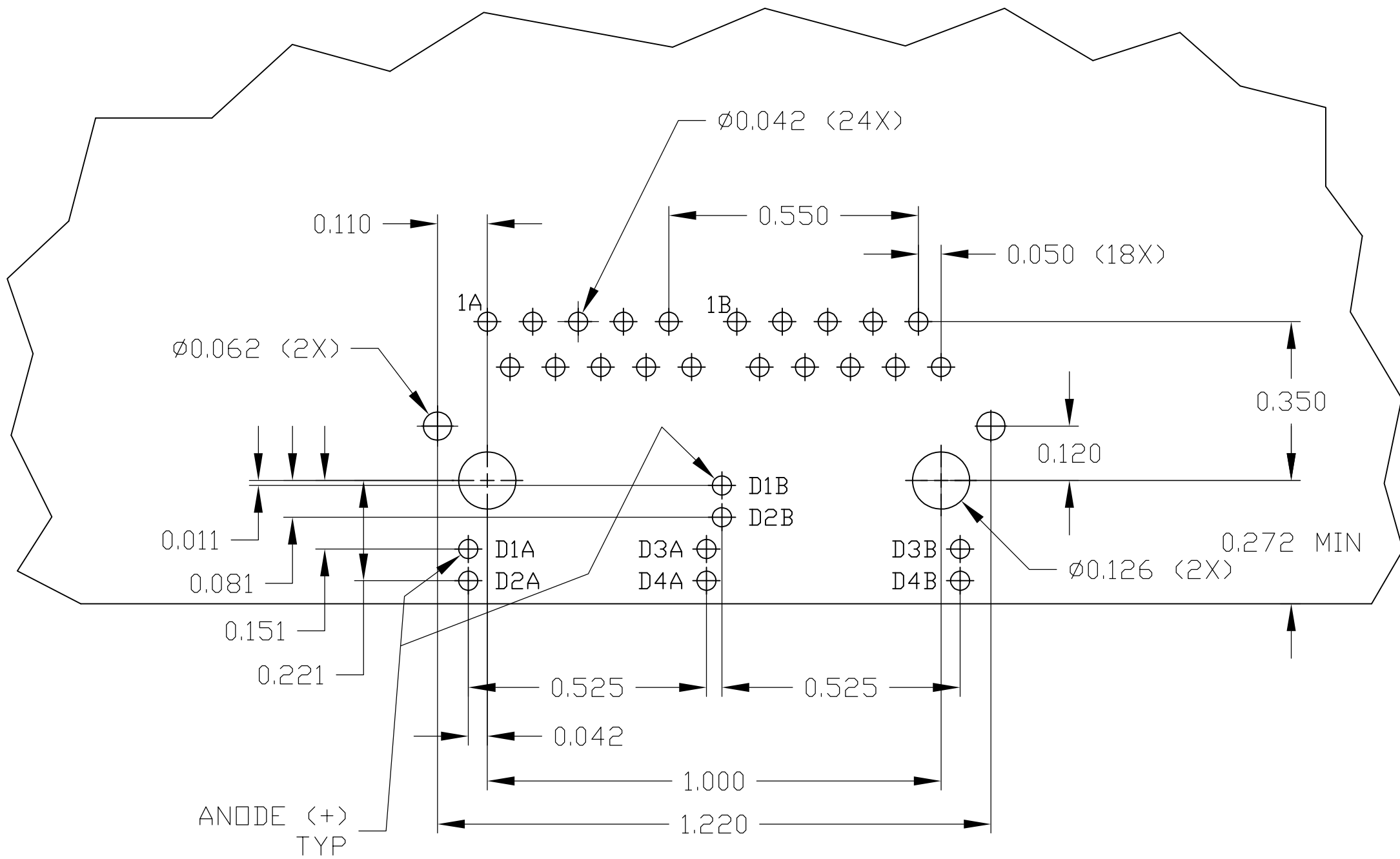
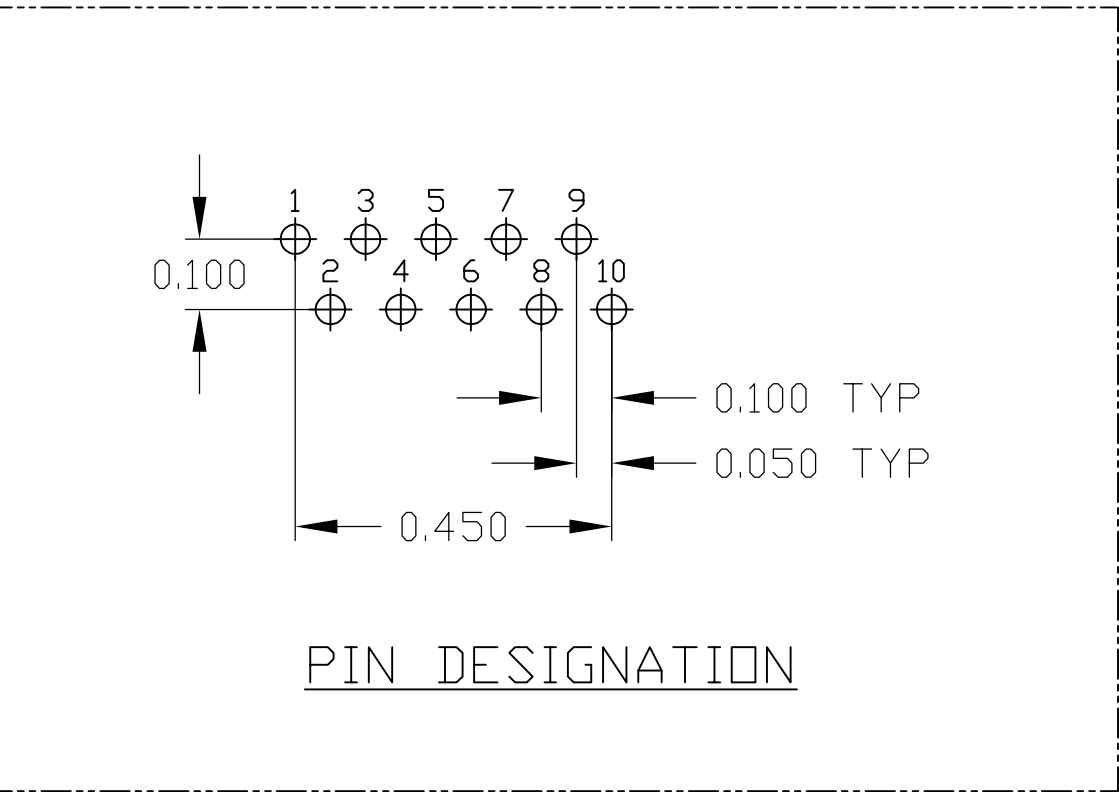
0.110±0.010	GREEN/YELLOW	GREEN/YELLOW	2-6610144-6
0.145±0.010	GREEN	YELLOW	6610144-8
0.145±0.010	GREEN/YELLOW	GREEN/YELLOW	6610144-6
DIM "A"	LED1 5	LED2 5	PART NUMBER

THIS DRAWING IS A CONTROLLED DOCUMENT.		DWN A. FERNANDEZ CHK D. FAROLE APD D. FAROLE	18MAR2005 18MAR2005 18MAR2005	 <b>trp</b> CONNECTOR a bel group		DONGGUAN CHINA	
DIMENSIONS: INCHES		TOLERANCES UNLESS OTHERWISE SPECIFIED:		MODEL NAME		DESC	
		0 PLC ± - 1 PLC ± - 2 PLC ± .010 3 PLC ± .005 4 PLC ± - ANGLES ± -		MAGJACK GANG		1X2 7G06 GIGABIT TAB UP W/ LED	
PRODUCT SPEC 108-2100		APPLICATION SPEC -		NON-POE		-	
CUSTOMER DRAWING				SCALE NTS		SHEET 1 OF 2	
				REV G			



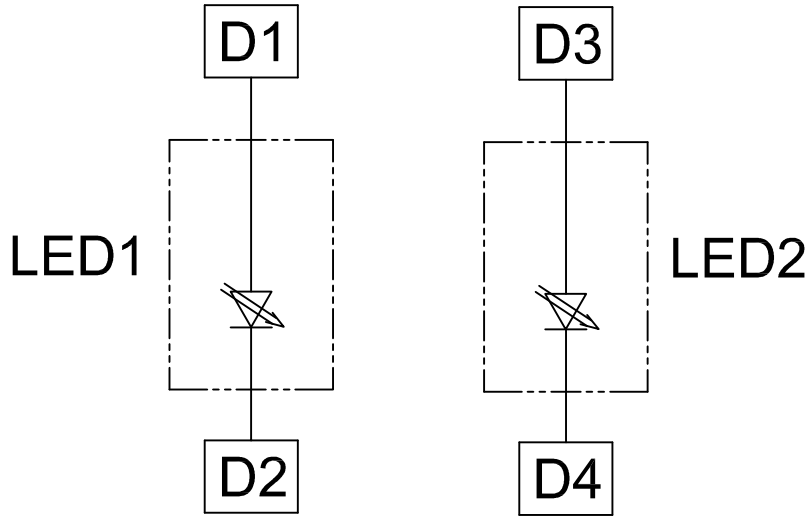


7G06 SERIES GIGABIT CIRCUIT


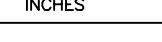


SUGGESTED PCB LAYOUT  
(Component Side)

C1 = 1000pF, 2kV CAPACITOR.  
R1-R4 = 75 OHMS, 1/16W RESISTORS.  
C2-C5 = 0.1μF, 50V, X7R CAPACITORS.



LED CONFIGURATION  
6610144-8 ONLY

THIS DRAWING IS A CONTROLLED DOCUMENT.				<div>DWN A. FERNANDEZ 18MAR2005 CHK D. FAROLE 18MAR2005 APRD D. FAROLE 18MAR2005</div> <div>MODEL NAME</div>		<div> <b>trp</b> CONNECTOR a bel group</div> <div>DONGGUAN CHINA</div>	
DIMENSIONS: INCHES		TOLERANCES UNLESS OTHERWISE SPECIFIED:		DESC		1X2 7G06 GIGABIT TAB UP W/ LED	
		0 P/LC ± - 1 P/LC ± - 2 P/LC ± .010 3 P/LC ± .005 4 P/LC ± - ANGLES ± - APPLICATION SPEC		MAGJACK GANG		SIZE A1	
PRODUCT SPEC		APPLICATION SPEC		NON-POE		DRAWING NO C=6610144	
108-2100		-		CUSTOMER DRAWING		RESTRICTED TO -	
				SCALE NTS		SHEET 2 OF 2	
						REV G	