



Chipsmall Limited consists of a professional team with an average of over 10 year of expertise in the distribution of electronic components. Based in Hongkong, we have already established firm and mutual-benefit business relationships with customers from,Europe,America and south Asia,supplying obsolete and hard-to-find components to meet their specific needs.

With the principle of “Quality Parts,Customers Priority,Honest Operation,and Considerate Service”,our business mainly focus on the distribution of electronic components. Line cards we deal with include Microchip,ALPS,ROHM,Xilinx,Pulse,ON,Everlight and Freescale. Main products comprise IC,Modules,Potentiometer,IC Socket,Relay,Connector.Our parts cover such applications as commercial,industrial, and automotives areas.

We are looking forward to setting up business relationship with you and hope to provide you with the best service and solution. Let us make a better world for our industry!



Contact us

Tel: +86-755-8981 8866 Fax: +86-755-8427 6832

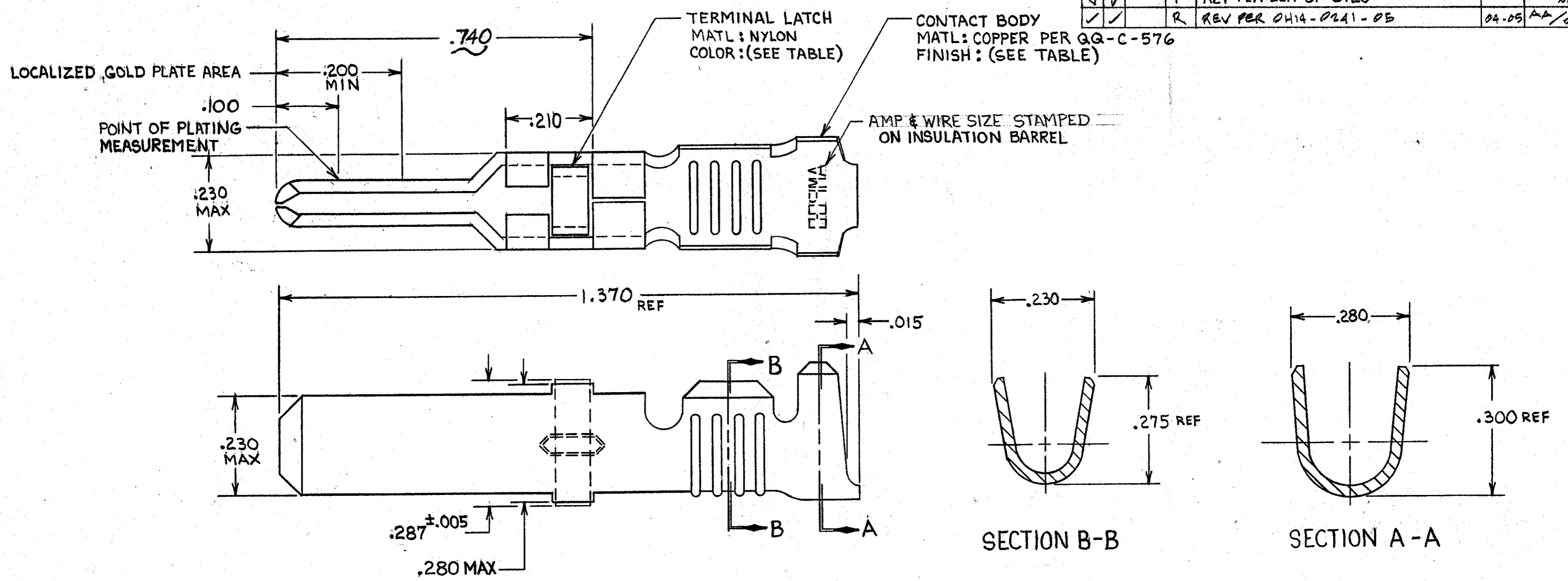
Email & Skype: info@chipsmall.com Web: www.chipsmall.com

Address: A1208, Overseas Decoration Building, #122 Zhenhua RD., Futian, Shenzhen, China



THIS DRAWING IS UNPUBLISHED; RELEASED FOR PUBLICATION
 © COPYRIGHT 19 BY AMP INCORPORATED, HARRISBURG, PA. ALL INTERNATIONAL RIGHTS RESERVED. AMP PRODUCTS MAY BE COVERED BY U.S. AND FOREIGN PATENTS AND/OR PATENTS PENDING.

REVISIONS						
P	F	ZONE	LTR	DESCRIPTION	DATE	APPROVED
✓	✓		L	REDRAWN & REVISED PER ECN R-1451	7-30-85	REB/SLB
✓	✓		M	REV. ECN R-1946	3-4-86	MPH/SLB
✓	✓		N	OBSOLETE -3 PER R-2760	3-4-87	SDS/SLB
✓	✓		P	REV PER ECN DF-5920	11-25-88	SV/ABM
✓	✓		R	REV PER OH14-0241-05	04-05	AA/OE



- ▲ REELED FOR USE WITH STANDARD APPLICATORS.
- ▲ PLATED WITH .000100 MIN SILVER PER QQ-S-365.
- ▲ PLATED WITH .000015 MIN GOLD PER MIL-G-45204 IN THE LOCALIZED GOLD PLATE AREA, GOLD FLASH ON THE REMAINDER, OVER .000030 MIN NICKEL PER QQ-N-290.
- ▲ PLATED WITH .000030 MIN GOLD PER MIL-G-45204 IN THE LOCALIZED GOLD PLATE AREA, GOLD FLASH ON THE REMAINDER, OVER .000030 MIN NICKEL PER QQ-N-290.
- ▲ PLATED WITH .000050 MIN 93-7% TIN-LEAD ALLOY OVER .000030 MIN NICKEL PER QQ-N-290.
- 6. WIRE RANGE = 10 AWG.
- 7. INSULATION RANGE = .190 - .220 DIA.
- ▲ PLATED WITH .000050 MIN TIN PER ASTM-B-545 OVER .000030 MIN NICKEL PER QQ-N-290.

BLACK	▲	66254-6	▲	66260-5
NATURAL	▲	66254-4	▲	66260-4
BLACK	▲	66254-3	▲	66260-3
BLACK	▲	66254-2	▲	66260-2
BLACK	▲	66254-1	▲	66260-1
TERMINAL LATCH COLOR	FINISH	STRIP ASS'Y P/N REF	LOOSE PIECE P/N ASS'Y	

UNLESS OTHERWISE SPECIFIED DIMENSIONS ARE IN INCHES. TOLERANCES ON: DECIMALS ±.010 ANGLES ±.010	CONTRACT NO	AMP AMP INCORPORATED Harrisburg, Pa. 17105		
	DR <i>Rich Rohrbach</i> 9-27-85			NAME
MATERIAL	CHK <i>Larry J. Lawner</i> 10-25-85	MALE TYPE XII GROUND CONTACT LOOSE PIECE ASS'Y		
SEE CALLOUT	APPD <i>Ed. Bolach</i> 10-25-85			
FINISH	APPD <i>James E. Smith</i> 10-27-85	SIZE	FSCM NO	DRAWING NO
SEE DASH NO	DSGN APPD	C	00779	66260
	OTHER APPD	SCALE	NTS	SHEET