



Chipsmall Limited consists of a professional team with an average of over 10 year of expertise in the distribution of electronic components. Based in Hongkong, we have already established firm and mutual-benefit business relationships with customers from,Europe,America and south Asia,supplying obsolete and hard-to-find components to meet their specific needs.

With the principle of “Quality Parts,Customers Priority,Honest Operation,and Considerate Service”,our business mainly focus on the distribution of electronic components. Line cards we deal with include Microchip,ALPS,ROHM,Xilinx,Pulse,ON,Everlight and Freescale. Main products comprise IC,Modules,Potentiometer,IC Socket,Relay,Connector.Our parts cover such applications as commercial,industrial, and automotives areas.

We are looking forward to setting up business relationship with you and hope to provide you with the best service and solution. Let us make a better world for our industry!



Contact us

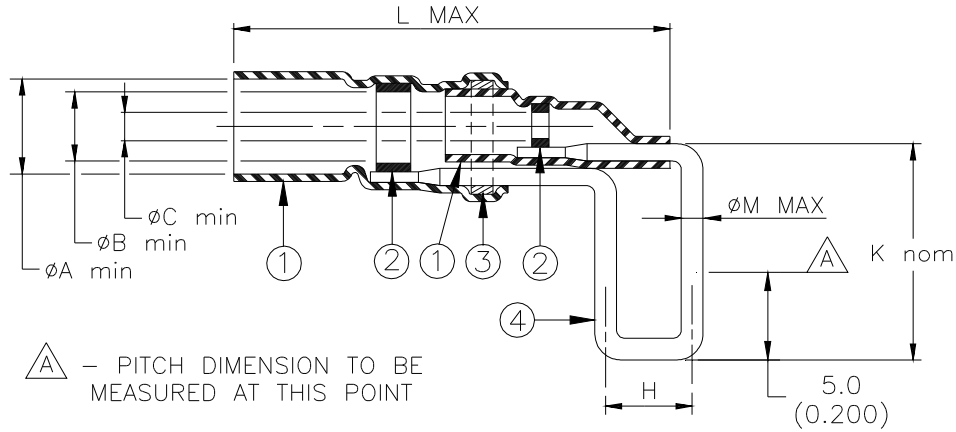
Tel: +86-755-8981 8866 Fax: +86-755-8427 6832

Email & Skype: info@chipsmall.com Web: www.chipsmall.com

Address: A1208, Overseas Decoration Building, #122 Zhenhua RD., Futian, Shenzhen, China



SPECIFICATION CONTROL DRAWING



| Pin Dimensions | | | | Product Dimensions | | | | | Cable Dimensions | | | |
|--------------------------|--------------|--------------------------|--------------|-----------------------------|----------------|----------------|----------------|---------------|------------------|--------------------------------|--------------------------------|----------------|
| ØM max = 0.68 (0.027) | | ØM max = 0.88 (0.035) | | Pitch H±0.3 (H±0.012) | ØA min | ØB min | ØC min | L max | K nom | ØD | ØE | ØF min. |
| Product Rev | Product Name | Product Rev | Product Name | | | | | | | | | |
| B-046-14-N | C | | | 2.54(0.10) | 3.4 (0.135) | 2.3 (0.090) | 0.8 (0.030) | 28 (1.100) | 14 (0.550) | 1.7(0.065) to 3.4(0.135) | 1.3(0.050) to 2.3(0.090) | 0.3 (0.012) |
| B-046-10-N | B | B-046-11-N | B | 5.08(0.20) | | | | | | | | |
| B-046-12-N | B | B-046-13-N | B | 6.35(0.25) | | | | | | | | |
| B-046-15-N | A | | | 2.54(0.10) | 4.4 (0.175) | 2.8 (0.110) | 1.6 (0.060) | 30 (1.180) | 14 (0.550) | 1.7(0.065) to 4.4(0.175) | 1.5(0.060) to 2.8(0.110) | 0.3 (0.012) |
| B-046-66-N | A | B-046-68-N | A | 5.08(0.20) | | | | | | | | |
| B-046-16-N | A | B-046-18-N | A | 6.35(0.25) | | | | | | | | |

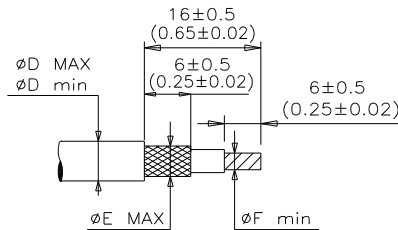
MATERIALS

- INSULATION SLEEVE: Heat-shrinkable, transparent blue, radiation cross-linked modified polyvinylidene fluoride.
- SOLDER PREFORM WITH FLUX:
SOLDER: TYPE Sn63 per ANSI-J-STD-006.
FLUX: TYPE ROL1 per ANSI-J-STD-004.
- MELTABLE RING: Thermally stabilized thermoplastic. Color: clear.
- TERMINATION PIN: C51900 per ASTM B103. Plating: Tin-Lead Solder per SAE AMS-P-81728 55%Sn min.

APPLICATION

- These controlled soldering devices are designed for termination of coaxial cables to printed circuit boards. They will terminate the tin plated or silver plated copper center conductor and braid of a coaxial cable having an insulation rated for at least 125°C. The lead may need to be aligned prior to insertion into the board.
- Temperature range: -55°C to +150°C.
For installation, see RPIP-500-03.

For best results, prepare the cable as shown:



| | | | | | | | | | |
|--|--|--|--|---|--|----------------------------------|--|-------------------------|--|
| | | TE Connectivity 305 Constitution Drive Menlo Park, CA 94025, USA | | Raychem Products | | TITLE : COAXIAL PINPAK | | | |
| UNLESS OTHERWISE SPECIFIED DIMENSIONS ARE IN MILLIMETERS. INCHES DIMENSIONS ARE BETWEEN BRACKETS. | | | | DOCUMENT NO.: B-046-XX-N | | | | | |
| TOLERANCES: 0.00 N/A 0.0 N/A 0 N/A | | ANGLES: N/A ROUGHNESS IN MICRON | | TE Connectivity reserves the right to amend this drawing at any time. Users should evaluate the suitability of the product for their application. | | DATE: 15-Apr-11 | | DOC ISSUE: 7 | |
| DRAWN BY: M. FORONDA | | REPLACES: D990606 | | PROD. REV. SEE TABLE | | DCR NUMBER: D010002 | | SCALE: None | |
| | | | | | | SIZE: A | | SHEET: 1 of 1 | |