



Chipsmall Limited consists of a professional team with an average of over 10 year of expertise in the distribution of electronic components. Based in Hongkong, we have already established firm and mutual-benefit business relationships with customers from,Europe,America and south Asia,supplying obsolete and hard-to-find components to meet their specific needs.

With the principle of "Quality Parts,Customers Priority,Honest Operation,and Considerate Service",our business mainly focus on the distribution of electronic components. Line cards we deal with include Microchip,ALPS,ROHM,Xilinx,Pulse,ON,Everlight and Freescale. Main products comprise IC,Modules,Potentiometer,IC Socket,Relay,Connector.Our parts cover such applications as commercial,industrial, and automotives areas.

We are looking forward to setting up business relationship with you and hope to provide you with the best service and solution. Let us make a better world for our industry!



Contact us

Tel: +86-755-8981 8866 Fax: +86-755-8427 6832

Email & Skype: info@chipsmall.com Web: www.chipsmall.com

Address: A1208, Overseas Decoration Building, #122 Zhenhua RD., Futian, Shenzhen, China



4

3

2

1

THIS DRAWING IS UNPUBLISHED.

RELEASED FOR PUBLICATION

© COPYRIGHT - BY TYCO ELECTRONICS CORPORATION. ALL RIGHTS RESERVED.

LOC	DIST	REVISIONS					
		P	LTR	DESCRIPTION	DATE	DWN	APVD
GP	00		A	NEW RELEASE	5MAR07	RG	DO

1. PART NUMBER CHANGES AND/OR DESIGN CHANGES AFFECTING ITEM INTERCHANGEABILITY REQUIRE PRIOR TYCO APPROVAL AND AUTHORIZATION BY REVISION TO THIS DRAWING.

2. ITEMS PROVIDED TO THIS SPECIFICATION TO BE PERMANENTLY IDENTIFIED PER THE FOLLOWING IDENTIFIER:

YEAR WEEK

TYCO PART NUMBER

DATE CODE (e.g. 0212)

XXXXXXXX-X

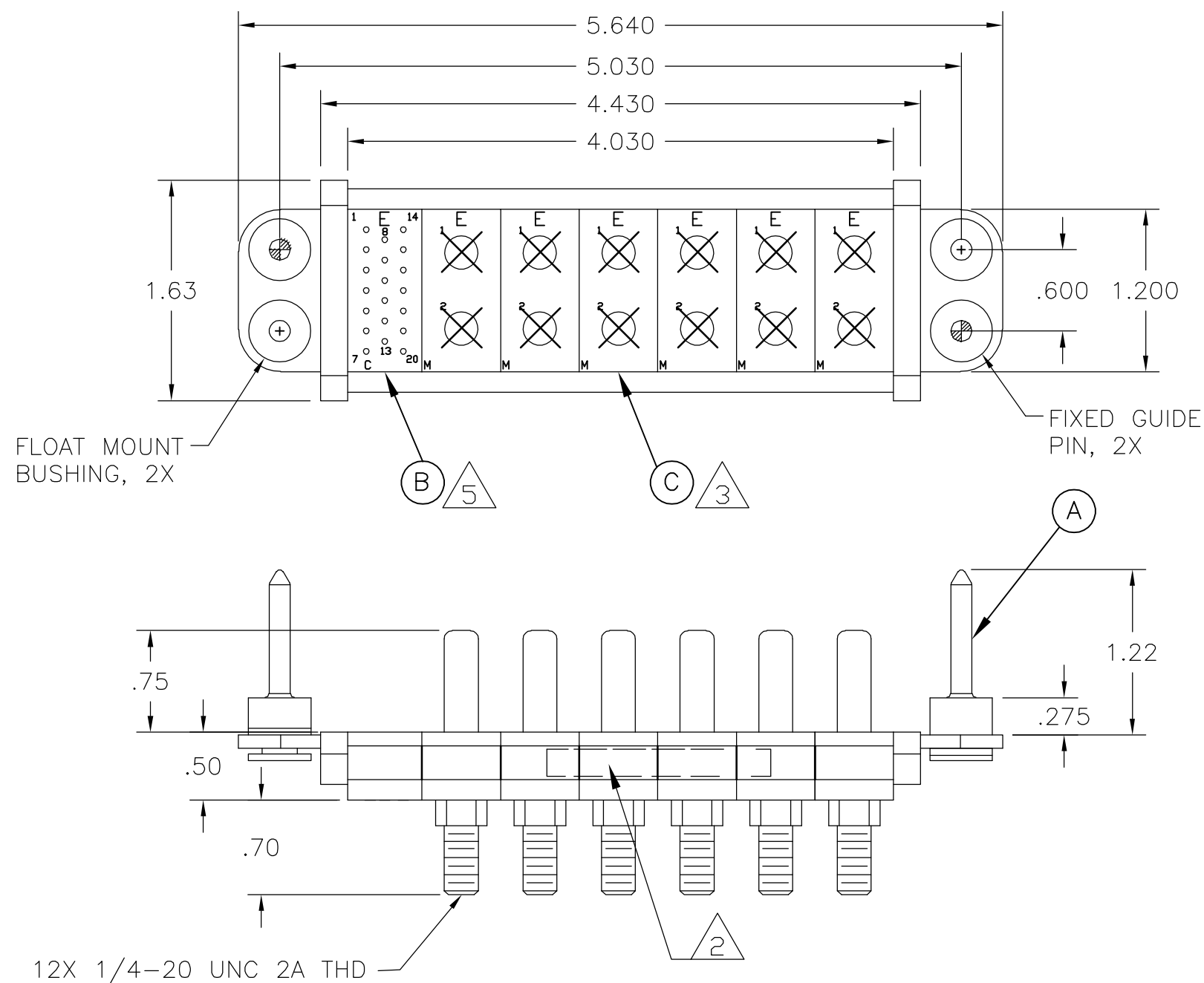
XXXX

3. MODULE M PIN CONTACTS INSTALLED.

4. MOUNTING FLANGE BUSHINGS ACCEPT 6/32 SCREW (.156 DIA. CLEARANCE HOLE, FLOAT MOUNT) OR 8/32 SCREW (.173 DIA. CLEARANCE HOLE, FLOAT MOUNT), USER SUPPLIED.

5. MODULES NOTED ARE CRIMP REMOVABLE STYLE CONTACTS. WILL BE PURCHASED SEPARATELY.
REF PIN CONTACT, SIZE 20, POSTMATE PN: 1650162-2
REF PIN CONTACT, SIZE 20, STD PN: 1650155-1

6. THIS CONNECTOR MATES WITH SOCKET CONN. TYCO PN 6646099-1



6	6648499-1	MODULE M	C
1	1648463-1	MODULE C	B
2	6648251-1	END CAP, GUIDE PIN, FLOAT	A
-1	PART NUMBER	DESCRIPTION	ITEM

THIS DRAWING IS A CONTROLLED DOCUMENT.		DWN R.GRZYBOWSKI 05MAR2007	tyco Tyco Electronics Corporation Harrisburg, PA 17105-3608			
DIMENSIONS: INCHES		CHK D.ORRIS 5MAR07				
TOLERANCES UNLESS OTHERWISE SPECIFIED:		APVD S.FLICKINGER 5MAR07	NAME PIN CONNECTOR DOMINO W/ PANEL CUT-OUT			
MATERIAL		PRODUCT SPEC —	SIZE A3			
FINISH		APPLICATION SPEC —	CAGE CODE 00779			
—		WEIGHT —	DRAWING NO C-6646098			
—		CUSTOMER DRAWING	RESTRICTED TO —			
—		SCALE 1:1	SHEET 1 OF 2			
—		REV A				

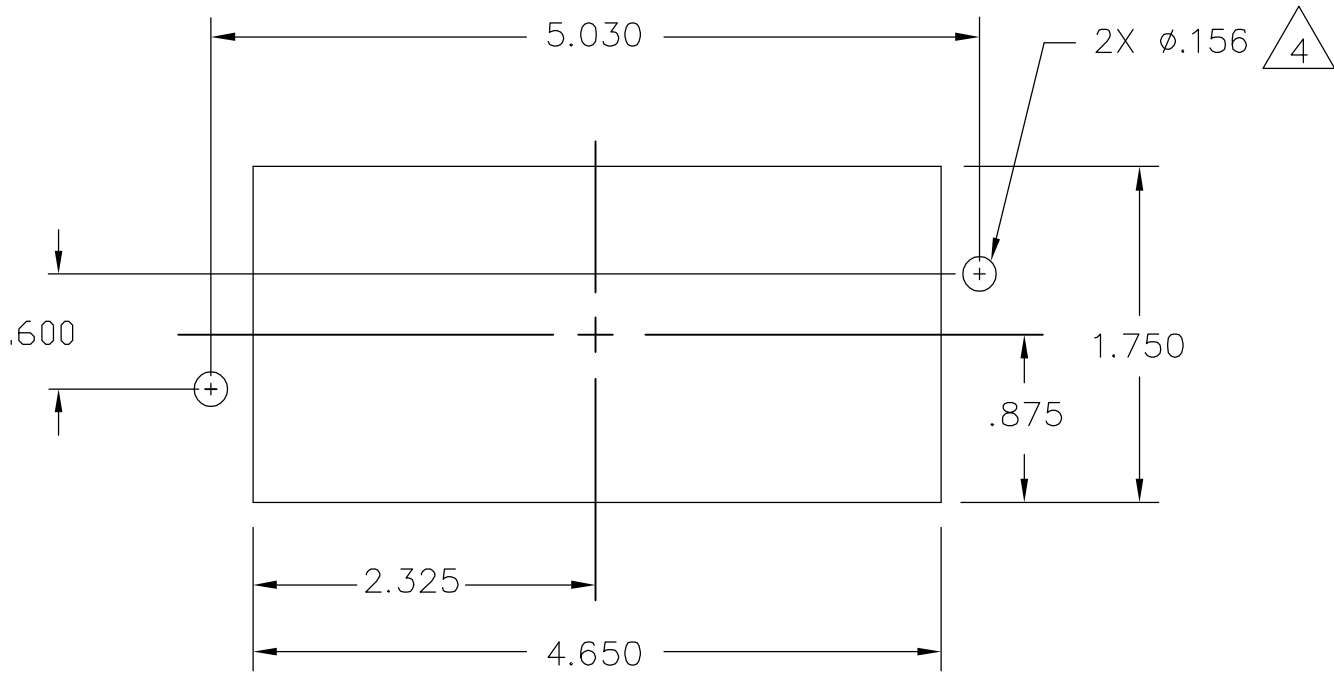
4

3

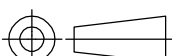
2

1

LOC	DIST	REVISIONS					
GP	00	P	LTR	DESCRIPTION	DATE	DWN	APVD
			—	SEE SHEET 1	—	—	—



PIN PANEL MOUNT CUTOUT
SCALE: NONE

THIS DRAWING IS A CONTROLLED DOCUMENT.		DWN R.GRZYBOWSKI 05MAR2007		tyco Electronics		Tyco Electronics Corporation Harrisburg, PA 17105-3608					
DIMENSIONS: INCHES		TOLERANCES UNLESS OTHERWISE SPECIFIED:		CHK D.ORRIS 5MAR07		APVD S.FLICKINGER 5MAR07		NAME			
		0 PLC ± - 1 PLC ± - 2 PLC ± .02 3 PLC ± .010 4 PLC ± - ANGLES ± 5		PRODUCT SPEC —		PIN CONNECTOR DOMINO W/ PANEL CUT-OUT		SIZE			
MATERIAL —		FINISH —		APPLICATION SPEC —		CAGE CODE A3 00779		DRAWING NO C-6646098			
				WEIGHT —		RESTRICTED TO —					
CUSTOMER DRAWING						SCALE 1:1		SHEET 2 OF 2		REV A	