



Chipsmall Limited consists of a professional team with an average of over 10 year of expertise in the distribution of electronic components. Based in Hongkong, we have already established firm and mutual-benefit business relationships with customers from,Europe,America and south Asia,supplying obsolete and hard-to-find components to meet their specific needs.

With the principle of “Quality Parts,Customers Priority,Honest Operation,and Considerate Service”,our business mainly focus on the distribution of electronic components. Line cards we deal with include Microchip,ALPS,ROHM,Xilinx,Pulse,ON,Everlight and Freescale. Main products comprise IC,Modules,Potentiometer,IC Socket,Relay,Connector.Our parts cover such applications as commercial,industrial, and automotives areas.

We are looking forward to setting up business relationship with you and hope to provide you with the best service and solution. Let us make a better world for our industry!



Contact us

Tel: +86-755-8981 8866 Fax: +86-755-8427 6832

Email & Skype: info@chipsmall.com Web: www.chipsmall.com

Address: A1208, Overseas Decoration Building, #122 Zhenhua RD., Futian, Shenzhen, China



THIS DRAWING IS UNPUBLISHED. RELEASED FOR PUBLICATION
 © COPYRIGHT 2006 By - ALL RIGHTS RESERVED.

LOC	DIST	REVISIONS					
GP	00	P	LTR	DESCRIPTION	DATE	DWN	APVD
		C		REV PER ECO-10-020831	15SEPT2011	RG	MS

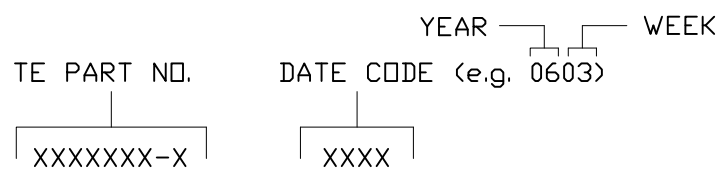
7. MODULE INFORMATION

CONNECTOR	CATALOG MODULE #	QTY	SIZE NO.	CONTACT QTY	MATING PIN	MAX. CURRENT (PER CONTACT)	CONTACT SPACING	VOLTAGE RATING*
SOCKET	FP0100	2	8	8	1.25 X 7.00 [.049 X .276]	35 AMPERES	7.50 [.2953]	250 VOLTS
	FP0301	1	22	24	.64 [.025] SQ.	3 AMPERES	2.50 [.0984]	125 VOLTS
	FP0515	2	ACTIVE STRAIGHT GUIDE PIN					
	FP500	1	LEFT MOUNTING FLANGE					
	FP501	1	RIGHT MOUNTING FLANGE					

- PART NUMBER CHANGES AND OR DESIGN CHANGES AFFECTING ITEM INTERCHANGEABILITY REQUIRE PRIOR TE APPROVAL AND AUTHORIZATION BY REVISION TO THIS DRAWING.
- MATERIALS:
 - INSULATORS: THERMOPLASTIC, GLASS REINFORCED, COLOR BLACK. UL94V-0 FLAMMABILITY RATED.
 - SOLDER SIGNAL PIN: BRASS ALLOY.
 - POWER CONTACTS: PHOSPHOR BRONZE ALLOY, COPPER ALLOY.
 - CROWN BANDS: COPPER ALLOY.
 - GUIDE PIN: BRASS COPPER ALLOY.
- FINISHES:
 - CONTACTS: GOLD PLATE .000030" MIN. THK, OVER NICKEL .000050" MIN. THK.
 - TERMINALS: TIN PLATE, MATTE FINISH .000100" MIN. THK. OVER NICKEL .00005 MIN THK.
 - GUIDE PIN: SILVER PLATE, .000200 MIN THK OVER NICKEL. .000050 MIN THICK..

- ACTIVE GUIDE PINS ACCEPT M3 SCREWS, (USER SUPPLIED).
- MOUNTING FLANGES ACCEPT M3 OR 4-40 SCREWS, (USER SUPPLIED).

6. ITEMS PROVIDED TO THIS SPECIFICATION TO BE PERMANENTLY IDENTIFIED PER THE FOLLOWING IDENTIFIER:

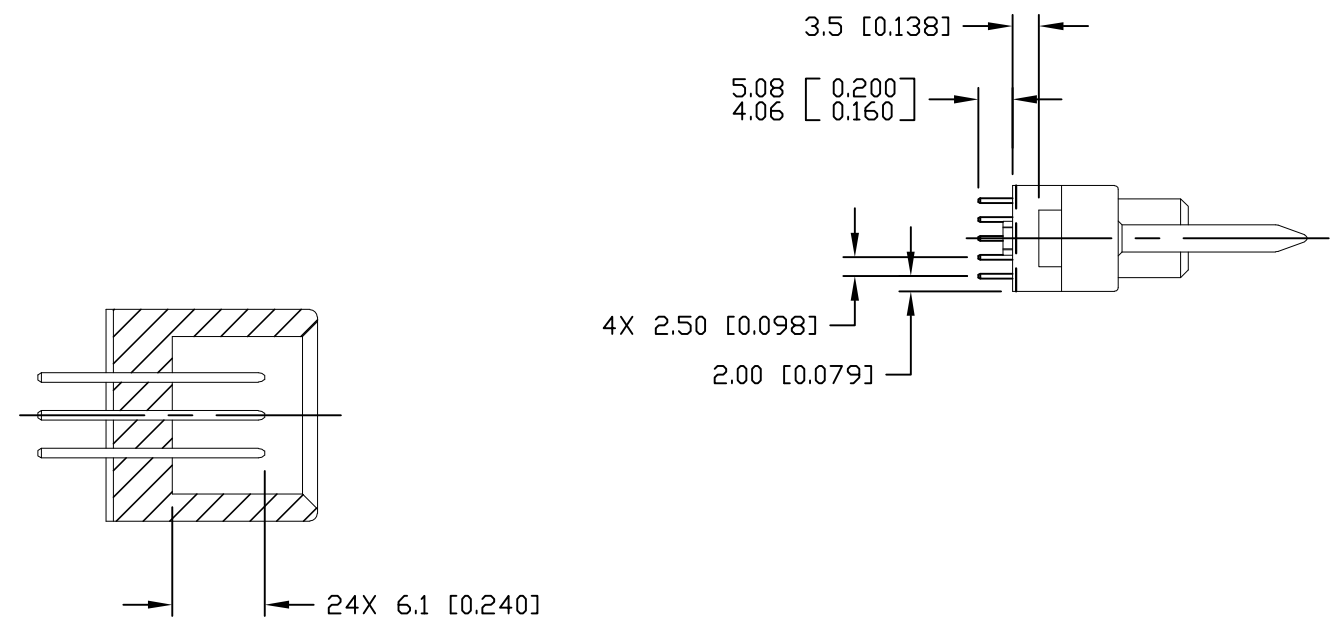


TE PART NUMBER
6646597-1

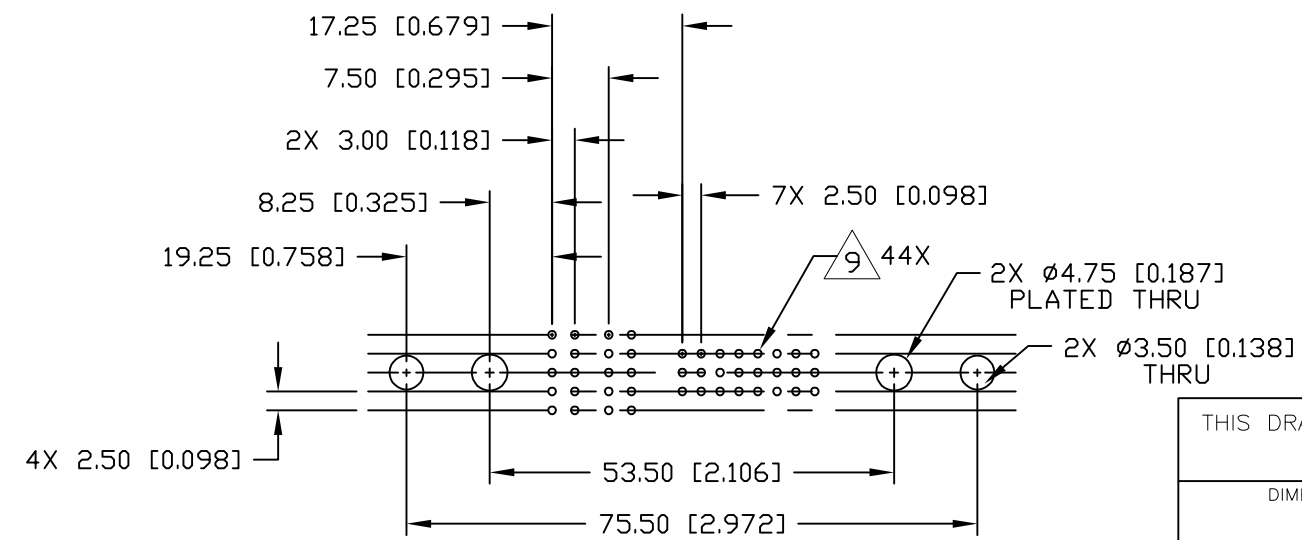
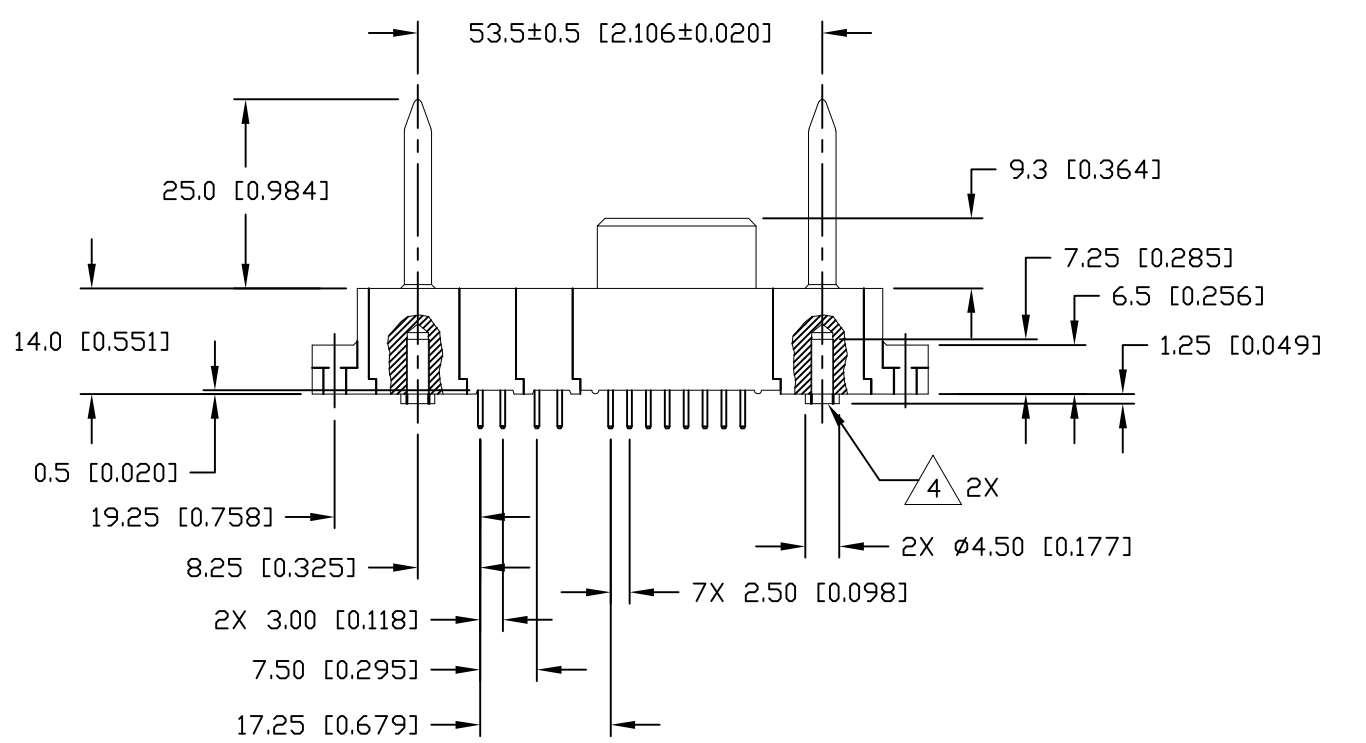
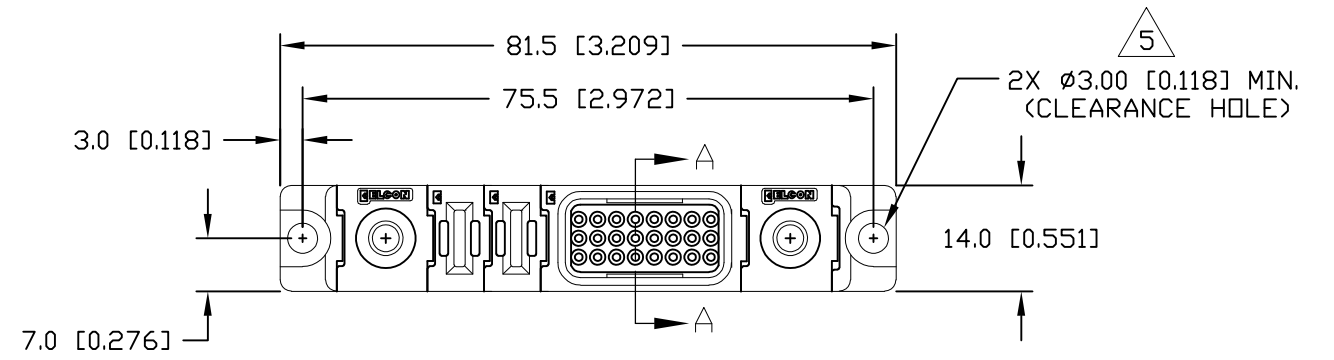
THIS DRAWING IS A CONTROLLED DOCUMENT.		DWN G.PETERS 27DEC2006	TE Connectivity			
DIMENSIONS: mm		CHK S.FLICKINGER 27DEC2006				
TOLERANCES UNLESS OTHERWISE SPECIFIED:		APVD S.FLICKINGER 27DEC2006	NAME			
0 PLC ± -		PRODUCT SPEC	SOCKET CONNECTOR, FLATPAQ STRAIGHT, SOLDER TAILS			
1 PLC ± .5 [.020]		APPLICATION SPEC	-			
2 PLC ± .25 [.010]		WEIGHT	SIZE	CAGE CODE	DRAWING NO	RESTRICTED TO
3 PLC ± -		-	A3	00779	C-6646597	-
4 PLC ± -		CUSTOMER DRAWING	SCALE	SHEET	REV	
ANGLES ± .5			1:1	1 OF 3	C	
MATERIAL	FINISH					
-	-					

THIS DRAWING IS UNPUBLISHED. RELEASED FOR PUBLICATION
 © COPYRIGHT 2006 By - ALL RIGHTS RESERVED.

LOC	DIST	REVISIONS			
P	LTR	DESCRIPTION	DATE	DWN	APVD
GP	00	-	SEE SHEET 1	-	-



SECTION A-A
 GENDER CHANGER NOT SHOWN FOR CLARITY



PRINTED CIRCUIT LAYOUT

THIS DRAWING IS A CONTROLLED DOCUMENT.		DWN G.PETERS 27DEC2006	TE Connectivity	
DIMENSIONS: mm		CHK S.FLICKINGER 27DEC2006		
TOLERANCES UNLESS OTHERWISE SPECIFIED:		APVD S.FLICKINGER 27DEC2006	NAME	
0 PLC ± -		PRODUCT SPEC	SOCKET CONNECTOR, FLATPAQ STRAIGHT, SOLDER TAILS	
1 PLC ± .5 [.020]		APPLICATION SPEC	-	
2 PLC ± .25 [.010]		WEIGHT -	SIZE A3	CAGE CODE 00779
3 PLC ± -		CUSTOMER DRAWING	DRAWING NO C-6646597	RESTRICTED TO -
4 PLC ± -			SCALE 1:1	SHEET 2 OF 3
ANGLES ± .5				REV C
FINISH -				

THIS DRAWING IS UNPUBLISHED.

RELEASED FOR PUBLICATION

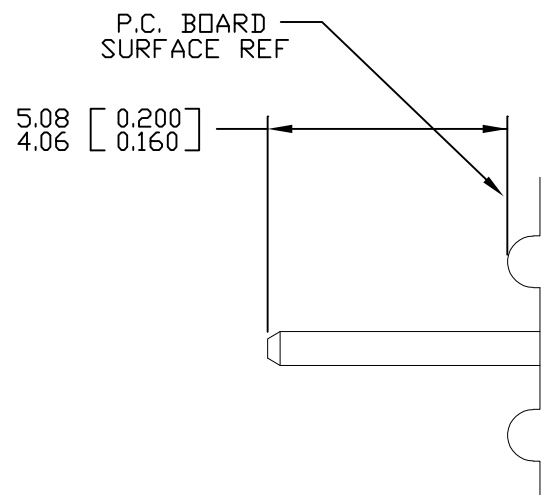
© COPYRIGHT 2006 By -

ALL RIGHTS RESERVED.

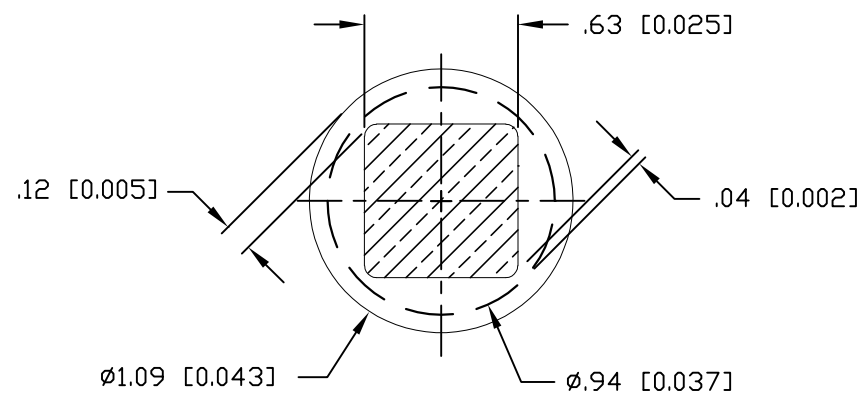
LOC GP DIST 00

REVISIONS

P	LTR	DESCRIPTION	DATE	DWN	APVD
-	-	SEE SHEET 1	-	-	-

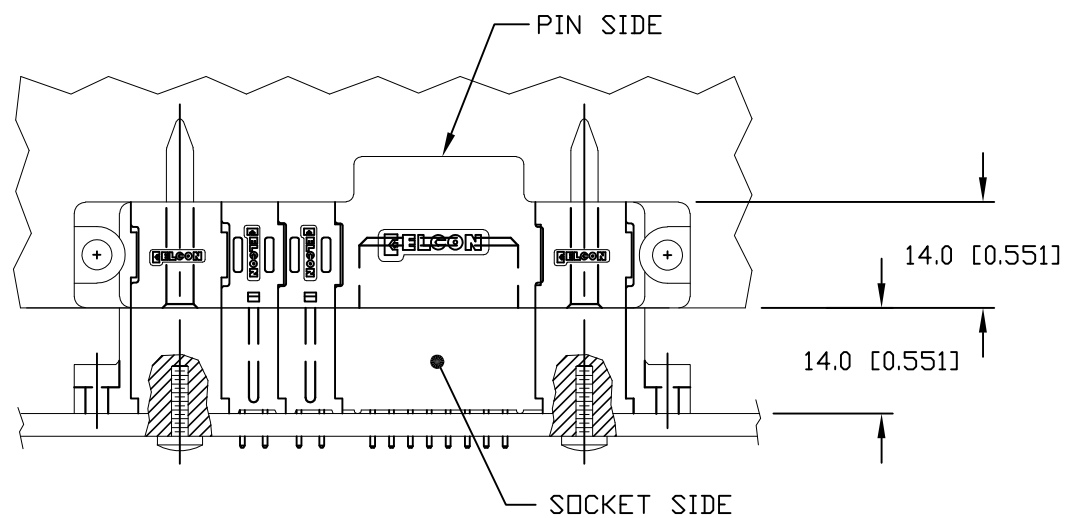
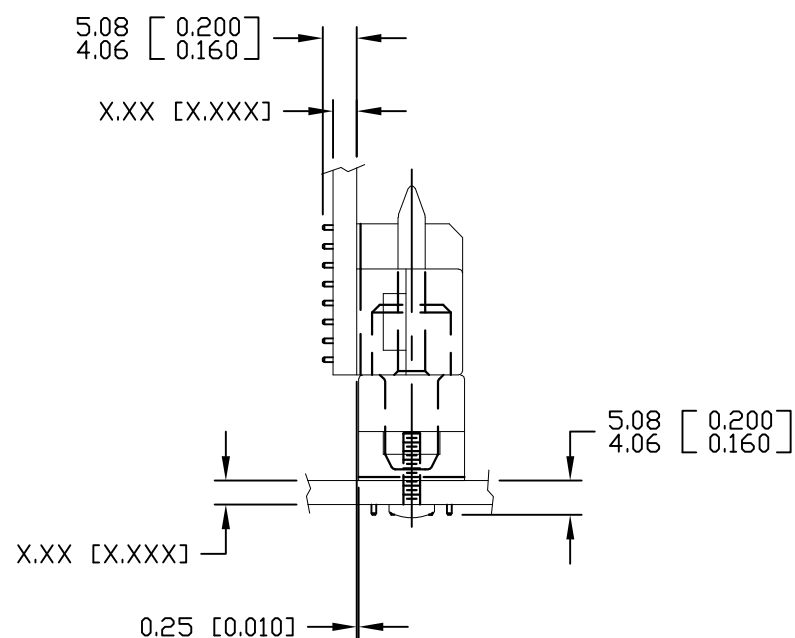


8. SOLDER PIN DETAIL




9 SOLDER TERMINATION AREA

RECOMMENDED PRINTED CIRCUIT HOLE
 FINISHED HOLE: $\phi 1.02 [0.040] \pm .08 [0.003]$
 DRILLED HOLE: $\phi 1.15 [0.0453] \pm .013 [0.0005]$
 COPPER PLATE: .025-.050 [0.001-.002] MINIMUM (PER SURFACE)
 TIN PLATE: .0005 [0.00002] MINIMUM (PER SURFACE)



MATED CONDITION
MATES WITH 6648000-1

THIS DRAWING IS A CONTROLLED DOCUMENT.		DWN G.PETERS 27DEC2006	 TE Connectivity		
DIMENSIONS: mm		CHK S.FLICKINGER 27DEC2006			
TOLERANCES UNLESS OTHERWISE SPECIFIED:		APVD S.FLICKINGER 27DEC2006	NAME		
0 PLC ± -		PRODUCT SPEC	SOCKET CONNECTOR, FLATPAQ STRAIGHT, SOLDER TAILS		
1 PLC ± .5 [.020]		APPLICATION SPEC	-		
2 PLC ± .25 [.010]		WEIGHT	SIZE A3	CAGE CODE 00779	DRAWING NO C-6646597
3 PLC ± -		MATERIAL -	RESTRICTED TO		-
4 PLC ± -			CUSTOMER DRAWING		SCALE 1:1
ANGLES ± .5		FINISH -		SHEET 3 OF 3	REV C