



Chipsmall Limited consists of a professional team with an average of over 10 year of expertise in the distribution of electronic components. Based in Hongkong, we have already established firm and mutual-benefit business relationships with customers from,Europe,America and south Asia,supplying obsolete and hard-to-find components to meet their specific needs.

With the principle of “Quality Parts,Customers Priority,Honest Operation,and Considerate Service”,our business mainly focus on the distribution of electronic components. Line cards we deal with include Microchip,ALPS,ROHM,Xilinx,Pulse,ON,Everlight and Freescale. Main products comprise IC,Modules,Potentiometer,IC Socket,Relay,Connector.Our parts cover such applications as commercial,industrial, and automotives areas.

We are looking forward to setting up business relationship with you and hope to provide you with the best service and solution. Let us make a better world for our industry!



## Contact us

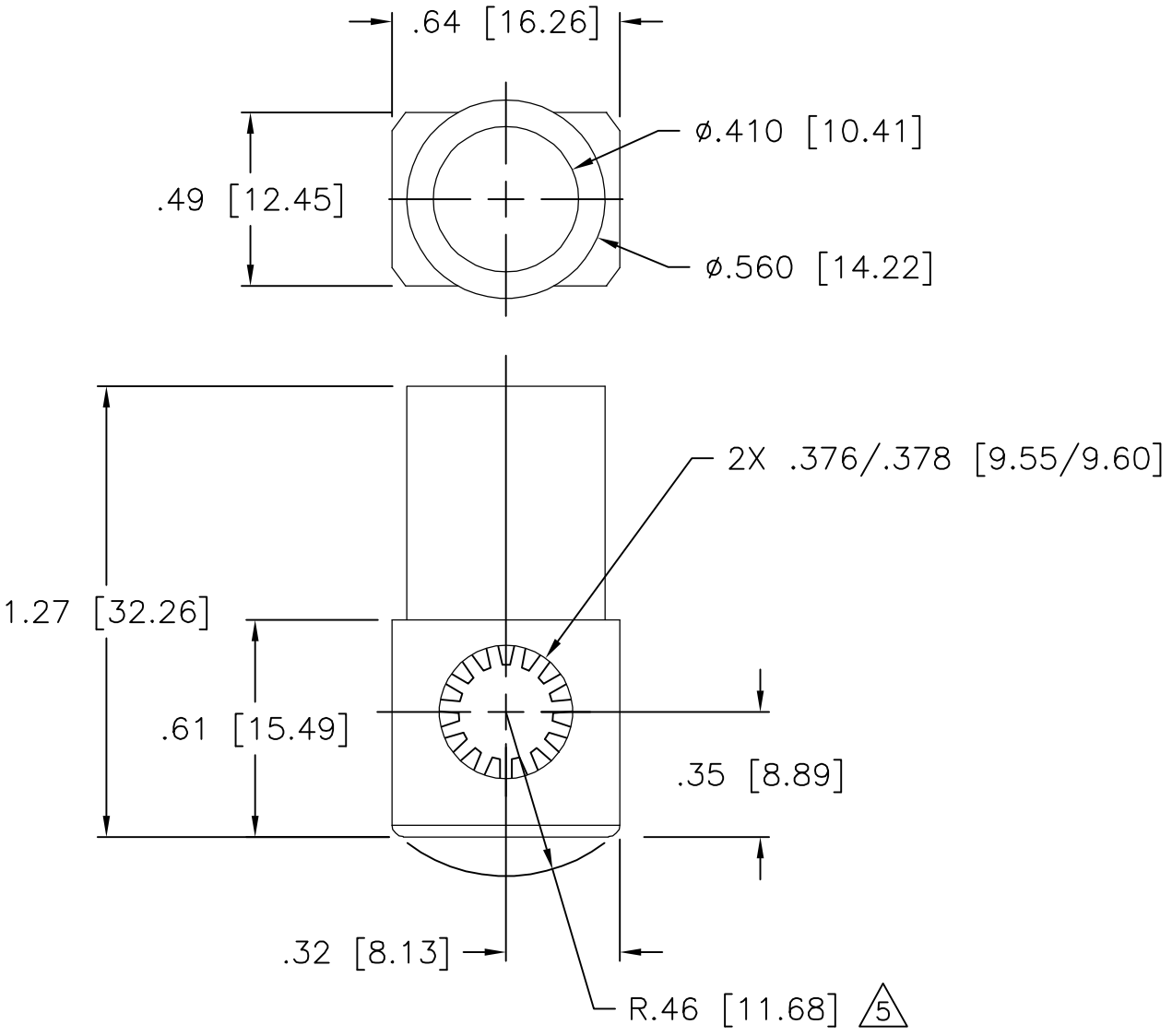
Tel: +86-755-8981 8866 Fax: +86-755-8427 6832

Email & Skype: [info@chipsmall.com](mailto:info@chipsmall.com) Web: [www.chipsmall.com](http://www.chipsmall.com)

Address: A1208, Overseas Decoration Building, #122 Zhenhua RD., Futian, Shenzhen, China



LOC	DIST	REVISIONS				
GP	00	P	LTR	DESCRIPTION	DATE	APVD
			A	RELEASED	02MAR06	RG MP



6. FOR TERMINATION REFER TO 1926079-1
- △ 5 ROTATION ARC.
4. FINISH:
- SOCKET HOUSING — SILVER PLATED .000200 MIN THK.  
                          OVER ELECTROLESS NICKEL PLATE  
                          .000040 MIN THK.
- CROWN — GOLD PLATED .000030 MIN THK OVER  
                          ELECTROLESS NICKEL PLATE .000040 MIN. THK
3. MATERIAL:
- CROWN CONTACT — BERYLLIUM COPPER  
    SOCKET HOUSING — TELLURIUM COPPER ALLOY  
    INSULATOR — THERMOPLASTIC, 94V-0, COLOR PER TABLE
2. ITEMS PROVIDED TO THIS SPECIFICATION SHALL BE IDENTIFIED ON THE CONTAINER WITH THE FOLLOWING INFORMATION:  
PART NUMBER AND DATE CODE OF MANUFACTURE.
1. PART NUMBER CHANGES AND/OR DESIGN CHANGES AFFECTING ITEM INTERCHANGEABILITY REQUIRE PRIOR TYCO APPROVAL AND AUTHORIZATION BY REVISION TO THIS DRAWING.

BLUE	6648238-3
RED	6648238-2
BLACK	6648238-1
COLOR	PART NUMBER

THIS DRAWING IS A CONTROLLED DOCUMENT.		DWN R.GRZYBOWSKI 03MAR2006	<b>tyco</b> <b>Electronics</b> Tyco Electronics Corporation Harrisburg, PA 17105-3608	
DIMENSIONS: INCHES		CHK M.PERCHERKE 02MAR06		
		APVD M.PERCHERKE 02MAR06	NAME JUMPER, CROWN SOCKET SIZE #2 WITH #2 CRIMP BARREL	
		PRODUCT SPEC —	—	
MATERIAL —		FINISH —	APPLICATION SPEC —	RESTRICTED TO —
		WEIGHT —	SIZE A3	CAGE CODE 00779
		DRAWING NO C=6648238		SCALE 1:1
		CUSTOMER DRAWING		SHEET 1 OF 1
				REV A