



Chipsmall Limited consists of a professional team with an average of over 10 year of expertise in the distribution of electronic components. Based in Hongkong, we have already established firm and mutual-benefit business relationships with customers from,Europe,America and south Asia,supplying obsolete and hard-to-find components to meet their specific needs.

With the principle of “Quality Parts,Customers Priority,Honest Operation,and Considerate Service”,our business mainly focus on the distribution of electronic components. Line cards we deal with include Microchip,ALPS,ROHM,Xilinx,Pulse,ON,Everlight and Freescale. Main products comprise IC,Modules,Potentiometer,IC Socket,Relay,Connector.Our parts cover such applications as commercial,industrial, and automotives areas.

We are looking forward to setting up business relationship with you and hope to provide you with the best service and solution. Let us make a better world for our industry!



Contact us

Tel: +86-755-8981 8866 Fax: +86-755-8427 6832

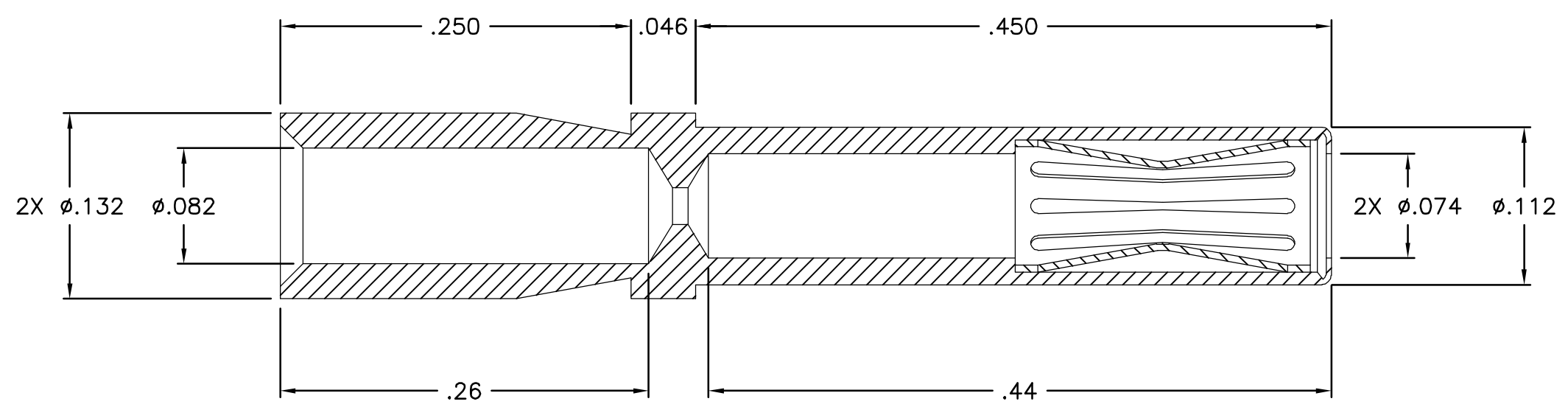
Email & Skype: info@chipsmall.com Web: www.chipsmall.com

Address: A1208, Overseas Decoration Building, #122 Zhenhua RD., Futian, Shenzhen, China



THIS DRAWING IS UNPUBLISHED. RELEASED FOR PUBLICATION
 © COPYRIGHT - BY TYCO ELECTRONICS CORPORATION. ALL RIGHTS RESERVED.

LOC	DIST	REVISIONS					
GP	00	P	LTR	DESCRIPTION	DATE	DWN	APVD
			A	RELEASED	16JAN06	RG	SF



5. TOOLS REQUIRED FOR CRIMPING:
 BASIC CRIMP TOOL - M22520/1-01, AND
 POSITIONER - M22520/1-02.

4 MATERIALS: BODY: TELLURIUM COPPER, ALLOY 14500 PER ASTM B 301.
 CROWN: BE/CU PER SAE CA172.

3 FINISH: BODY: SILVER PLATED PER QQ-S-365 OVER NICKEL PER
 QQ-N-290.
 CROWN: GOLD PLATED PER MIL-G-45204 OVER
 NICKEL PER QQ-N-290.

2. ITEMS PROVIDED TO THIS SPECIFICATION TO BE IDENTIFIED
 ON THE CONTAINER WITH THE FOLLOWING INFORMATION:
 PART NUMBER AND DATE CODE OF MANUFACTURE.

1. PART NUMBER CHANGES AND/OR DESIGN CHANGES AFFECTING
 ITEM INTERCHANGEABILITY REQUIRE PRIOR ELCON APPROVAL
 AND AUTHORIZATION TO THIS DRAWING.

THIS DRAWING IS A CONTROLLED DOCUMENT.	
DIMENSIONS: INCHES	TOLERANCES UNLESS OTHERWISE SPECIFIED:
	0 PLC ± -
	1 PLC ± -
	2 PLC ± .01
	3 PLC ± .005
	4 PLC ± -
	ANGLES ± .5
MATERIAL	FINISH

DWN	R.GRZYBOWSKI	16JAN2006
CHK	S.FLICKINGER	16JAN06
APVD	S.FLICKINGER	16JAN06
PRODUCT SPEC	-	
APPLICATION SPEC	-	
WEIGHT	-	
CUSTOMER DRAWING		

AS SHOWN		6648333-1	
DESCRIPTION		PART NUMBER	
		Tyco Electronics Corporation Harrisburg, PA 17105-3608	
NAME		ELCON	
CONTACT, SOCKET, SIZE 16 WITH #14 CRIMP BARREL			
SIZE	CAGE CODE	DRAWING NO	RESTRICTED TO
A3	00779	C-6648333	-
SCALE 1:1		SHEET 1 OF 1	REV A