



Chipsmall Limited consists of a professional team with an average of over 10 year of expertise in the distribution of electronic components. Based in Hongkong, we have already established firm and mutual-benefit business relationships with customers from,Europe,America and south Asia,supplying obsolete and hard-to-find components to meet their specific needs.

With the principle of "Quality Parts,Customers Priority,Honest Operation,and Considerate Service",our business mainly focus on the distribution of electronic components. Line cards we deal with include Microchip,ALPS,ROHM,Xilinx,Pulse,ON,Everlight and Freescale. Main products comprise IC,Modules,Potentiometer,IC Socket,Relay,Connector.Our parts cover such applications as commercial,industrial, and automotives areas.

We are looking forward to setting up business relationship with you and hope to provide you with the best service and solution. Let us make a better world for our industry!



Contact us

Tel: +86-755-8981 8866 Fax: +86-755-8427 6832

Email & Skype: info@chipsmall.com Web: www.chipsmall.com

Address: A1208, Overseas Decoration Building, #122 Zhenhua RD., Futian, Shenzhen, China



660 series

Power toggle switches • metal lever



DISTINCTIVE FEATURES

- Four pole models
- High current/voltage rating
- Screw terminals



ELECTRICAL SPECIFICATIONS

- Max. current/voltage rating with resistive load : 10 A 30 VDC
- Decrease by 50 % for inductive load
- Initial contact resistance : 10 mΩ max.
- Insulation resistance : 1,000 MΩ min. at 500 VDC
- Dielectric strength : 2,500 Vrms 50 Hz min. between terminals
2,500 Vrms 50 Hz min. between terminals and frame
- Electrical life : 10,000 cycles at full load



GENERAL SPECIFICATIONS

- Torque : 1.50 Nm (1.10 Ft.lb) max. applied to nut.
- Panel thickness : 4.5 mm (.177) max.
- Operating temperature : -20 °C to +55 °C (-4 °F to +131 °F)



MATERIALS

- Case : melamine/polyester
- Actuator : brass, nickel plated
- Bushing : brass, nickel plated
- Contacts silver

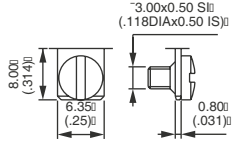


660 series

Power toggle switches • metal lever



TERMINALS

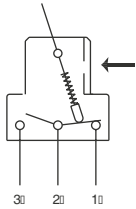


Screw (standard)

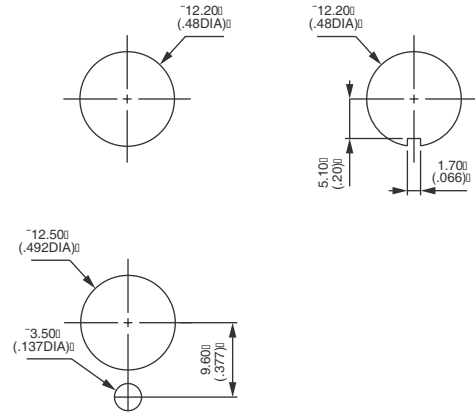


ELECTRICAL FUNCTIONS

→ KEYWAY



PANEL CUT-OUT

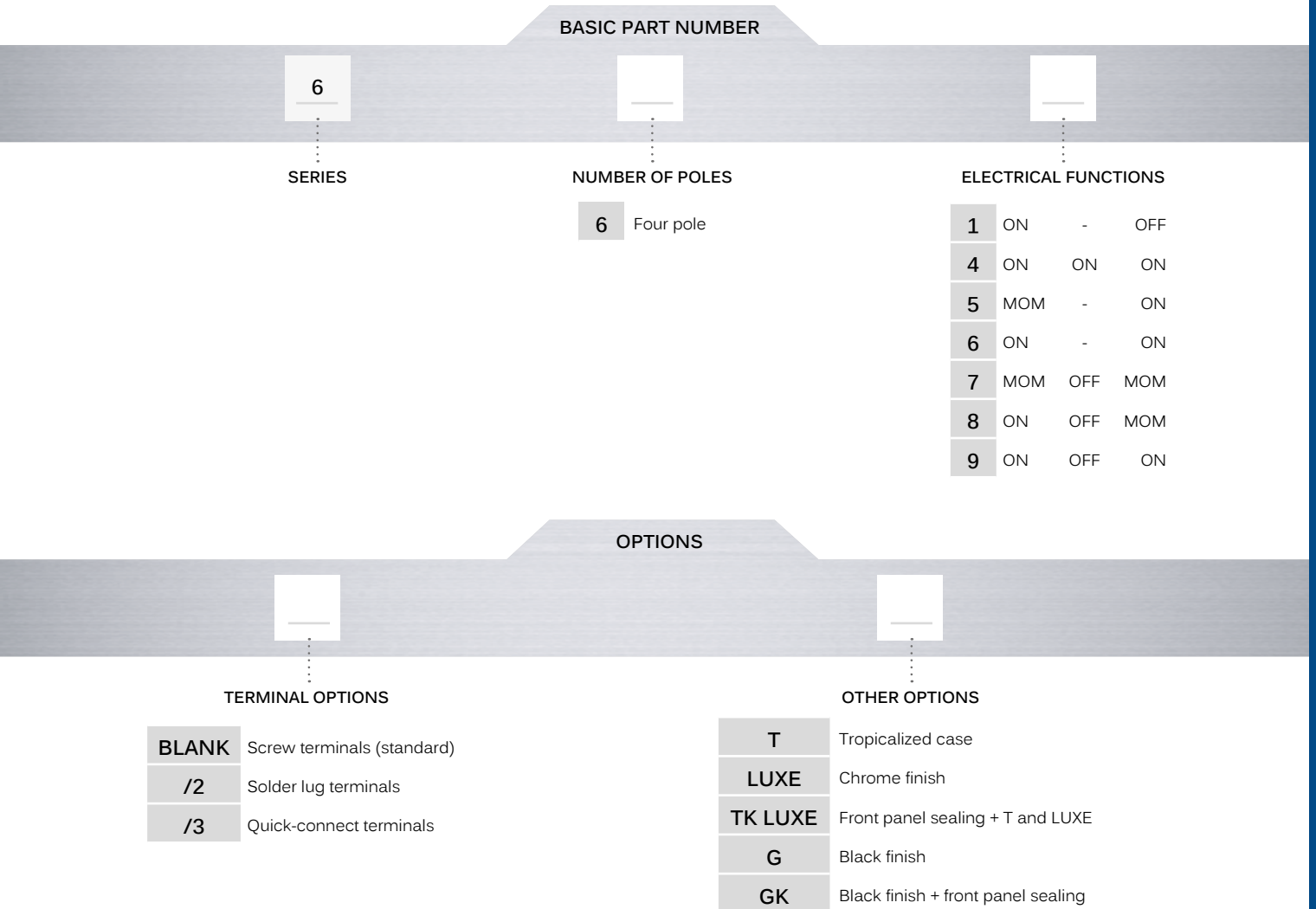


660 series

Power toggle switches • metal lever



BUILD YOUR PART NUMBER



ABOUT THIS SERIES

On the following page, you will find successively basic part numbers of switches and options.

Mounting accessories : Standard hardware supplied with all models: 1 hex nut U166, 1 knurled nut U411 and 1 lockwasher U13. Standard and special hardware is presented in the "Accessories" section of website..

660 series

Power toggle switches • metal lever

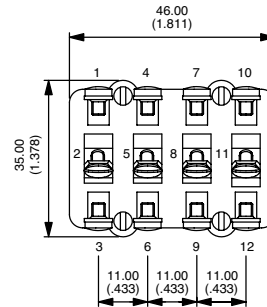
FOUR POLE



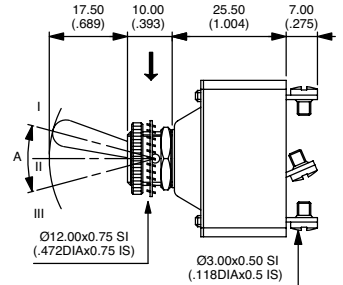
| BASIC P/N | A | III 2-1* | II | I 2-3** |
|-----------|-----|-------------|-----|------------|
| 661 | 20° | ON | - | OFF |
| 664 * | 28° | ON | ON | ON |
| 665 | 20° | MOM | - | ON |
| 666 | 20° | ON | - | ON |
| 667 | 20° | MOM | OFF | MOM |
| 668 | 20° | ON | OFF | MOM |
| 669 | 28° | ON | OFF | ON |

* (2-1) (5-4) (8-7) (11-10) ** (2-3) (5-6) (8-9) (11-12)

→ KEYWAY



A = Angle of throw

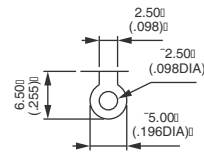


* See "Technical information" on website.

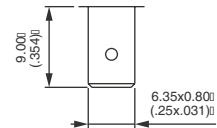
TERMINAL OPTIONS



- Blank** Screw terminals (standard)
- /2** Solder lug terminals
- /3** Quick-connect terminals 6.35 x 0.8 (.250 x .031)



/2



/3

LOCKING LEVERS



- T** Tropicalized diallylphthalate case (-40 °C to +85 °C) (-40 °F to +185 °F)
- LUXE** Chrome plated lever and cap nut U117
- TK LUXE** Options T and LUXE + front panel sealing by O-ring and sealing washer. See 600H series.
- G** Black finish on bushing, lever and nuts. Includes tropicalization (option T).
- GK** Option G + front panel sealing by O-ring and sealing washer.