



Chipsmall Limited consists of a professional team with an average of over 10 year of expertise in the distribution of electronic components. Based in Hongkong, we have already established firm and mutual-benefit business relationships with customers from,Europe,America and south Asia,supplying obsolete and hard-to-find components to meet their specific needs.

With the principle of “Quality Parts,Customers Priority,Honest Operation,and Considerate Service”,our business mainly focus on the distribution of electronic components. Line cards we deal with include Microchip,ALPS,ROHM,Xilinx,Pulse,ON,Everlight and Freescale. Main products comprise IC,Modules,Potentiometer,IC Socket,Relay,Connector.Our parts cover such applications as commercial,industrial, and automotives areas.

We are looking forward to setting up business relationship with you and hope to provide you with the best service and solution. Let us make a better world for our industry!



Contact us

Tel: +86-755-8981 8866 Fax: +86-755-8427 6832

Email & Skype: info@chipsmall.com Web: www.chipsmall.com

Address: A1208, Overseas Decoration Building, #122 Zhenhua RD., Futian, Shenzhen, China



This drawing involves proprietary design rights of Tyco Electronics Corporation, and all design, manufacture, reproduction, use and sale rights regarding the same are expressly reserved. It is submitted for a specific purpose and the recipient by accepting this drawing, assumes custody and control and agrees to take reasonable precautions; (a) that this drawing will not be copied and reproduced, in whole or in part, or its contents revealed in any manner, or to any person except to meet the purpose for which it was delivered and (b) that any special features peculiar to this design will not be incorporated in other projects without the expressed written permission of Tyco Electronics Corporation.

| REVISIONS | | | |
|-----------|-----|-------------|---------|
| EC | REV | DESCRIPTION | DATE |
| CPR | A | NEW RELEASE | 1/20/06 |

5. MODULE INFORMATION

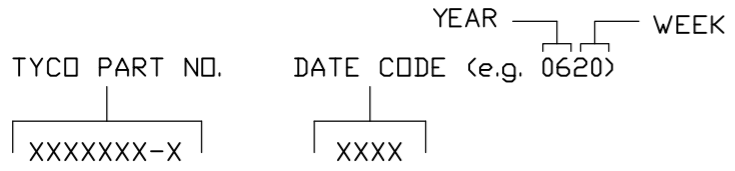
| CONNECTOR | TYCO PART NUMBER | CATALOG MODULE # | QTY | SIZE NO. | CONTACT QTY | MATING PIN | MAX. CURRENT (PER CONTACT) | CONTACT SPACING | VOLTAGE RATING* |
|-----------|------------------|------------------|-----|----------|-------------|------------------------------|----------------------------|-----------------|-----------------|
| PIN | 6766496-1 | FP0153 | 2 | 8 | 2 | 1.25 X 7.00 [.049 X .276] | 35 AMPERES | 7.50 [2953] | 250 VOLTS |
| | | FP0151 | 4 | | 4 | | | | |

*IAW IEC-950

NOTES: UNLESS OTHERWISE SPECIFIED.

- PART NUMBER CHANGES AND OR DESIGN CHANGES AFFECTING ITEM INTERCHANGEABILITY REQUIRE PRIOR ELCON APPROVAL AND AUTHORIZATION BY REVISION TO THIS DRAWING.
- MATERIALS:
INSULATORS: THERMOPLASTIC, GLASS REINFORCED, COLOR BLACK. UL94V-0 FLAMMABILITY RATED.
POWER CONTACTS: COPPER ALLOY.
- FINISHES:
CONTACTS: GOLD PLATE PER MIL-G-45204 TYPE II, CLASS 0, .000030" MIN. THK, OVER NICKEL PER QQ-N-290, CLASS 2, .000040" MIN. THICKNESS.
TERMINALS: TIN PLATE, MATTE FINISH .000100" MIN. THICKNESS.

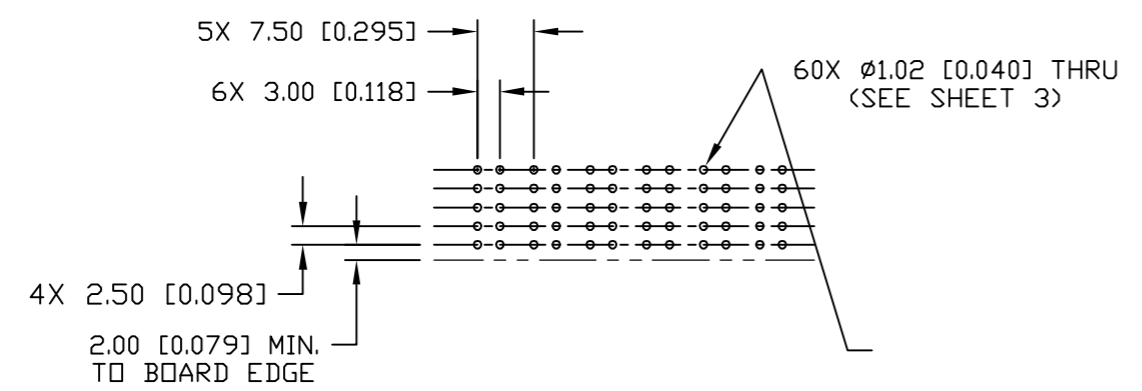
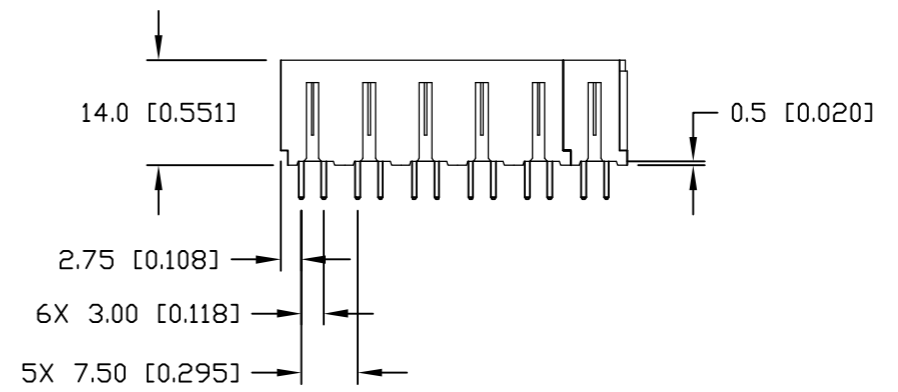
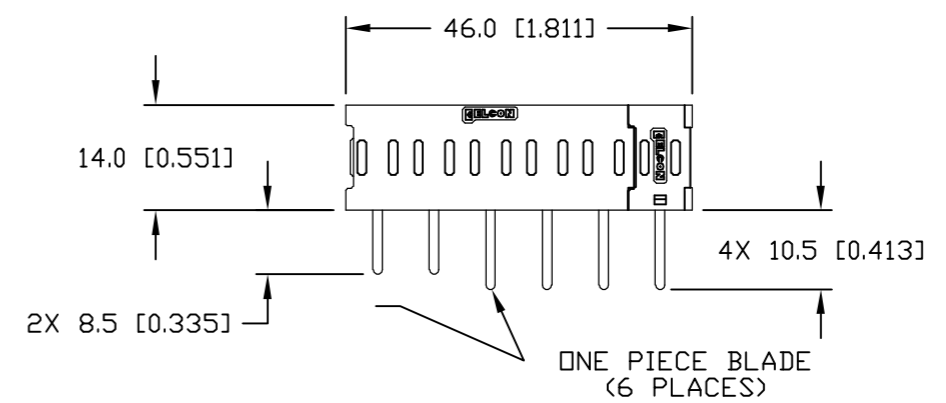
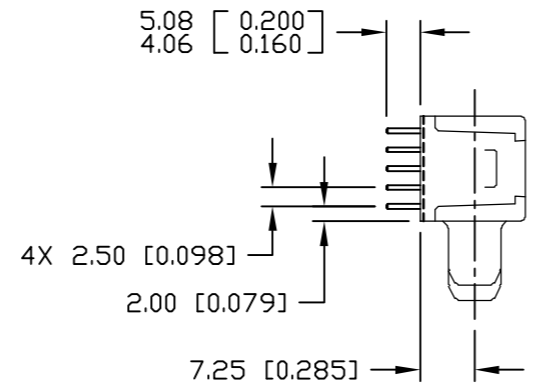
4. ITEMS PROVIDED TO THIS SPECIFICATION TO BE PERMANENTLY IDENTIFIED PER THE FOLLOWING IDENTIFIER:



| | | | | | |
|---|--------------------------------------|---|-----------------------------|---|----------------------|
| <p>THIRD ANGLE PROJECTION</p> <p>UNLESS OTHERWISE SPECIFIED DIMENSIONS ARE IN METRIC [INCHES]</p> <p>TOLERANCES</p> <p>ANGLES ± .5°</p> <p>DECIMALS</p> <p>.XX ± .25 [.010]</p> <p>.X ± .5 [.020]</p> | <p>← MM OR MM [INCH]</p> <p>INCH</p> | <p>DRAWN</p> <p>R. F. A.</p> | <p>DATE</p> <p>1/20/06</p> | <p>tyco Tyco Electronics Corporation Electronics Menlo Park, Ca 94025</p> <p>ELCON</p> | |
| | <p>CHECKED</p> | <p>TITLE</p> <p>PIN CONNECTOR, FLATPAQ RIGHT ANGLE, SOLDER TAILS PN 6766496-1</p> | | | |
| | <p>APPROVED</p> | <p>APPROVED</p> <p>D. CHAU</p> <p>1/20/06</p> | <p>SIZE</p> <p>B</p> | <p>DWG NUMBER</p> <p>C = 6766496</p> | <p>REV.</p> <p>A</p> |
| | <p>DCA APPROVED</p> <p>M. ALIM</p> | <p>ACAD FILE NUMBER</p> <p>C6766496A.DWG</p> | <p>DWG SCALE</p> <p>1=1</p> | <p>SH 1 OF 3</p> | |

This drawing involves proprietary design rights of Tyco Electronics Corporation, and all design, manufacture, reproduction, use and sale rights regarding the same are expressly reserved. It is submitted for a specific purpose and the recipient by accepting this drawing, assumes custody and control and agrees to take reasonable precautions; (a) that this drawing will not be copied and reproduced, in whole or in part, or its contents revealed in any manner, or to any person except to meet the purpose for which it was delivered and (b) that any special features peculiar to this design will not be incorporated in other projects without the expressed written permission of Tyco Electronics Corporation.

| REVISIONS | | | |
|-----------|-----|-------------|------|
| EC | REV | DESCRIPTION | DATE |
| | | SEE SHEET 1 | |

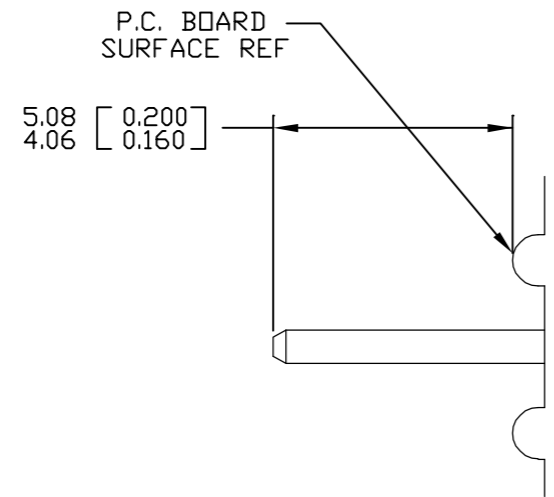


PRINTED CIRCUIT LAYOUT

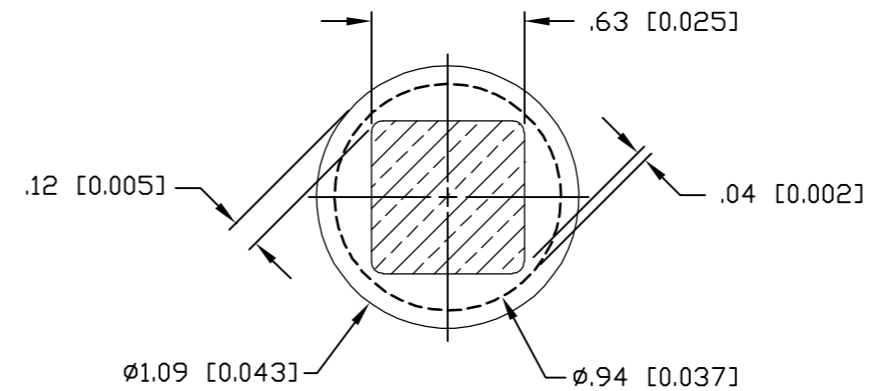
| | | | | | |
|---|---------------------|-----------------|--|--|-------------|
| ← MM OR MM [INCH] INCH THIRD ANGLE PROJECTION UNLESS OTHERWISE SPECIFIED DIMENSIONS ARE IN METRIC [INCHES] TOLERANCES ANGLES ± .5° DECIMALS .XX ± .25 [0.010] .X ± .5 [0.020] | DRAWN R. F. A. | DATE 1/20/06 | Tyco Electronics Corporation Menlo Park, Ca 94025 | TITLE PIN CONNECTOR, FLATPAQ RIGHT ANGLE, SOLDER TAILS PN 6766496-1 | |
| | CHECKED | | | | |
| | APPROVED | | | SIZE | DWG NUMBER |
| | APPROVED D. CHAU | 1/20/06 | | B | C = 6766496 |
| | ACAD FILE NUMBER | C6766496A.DWG | DWG SCALE | 1=1 | SH 2 OF 3 |

This drawing involves proprietary design rights of Tyco Electronics Corporation, and all design, manufacture, reproduction, use and sale rights regarding the same are expressly reserved. It is submitted for a specific purpose and the recipient by accepting this drawing, assumes custody and control and agrees to take reasonable precautions; (a) that this drawing will not be copied and reproduced, in whole or in part, or its contents revealed in any manner, or to any person except to meet the purpose for which it was delivered and (b) that any special features peculiar to this design will not be incorporated in other projects without the expressed written permission of Tyco Electronics Corporation.

| REVISIONS | | | |
|-----------|-----|-------------|------|
| EC | REV | DESCRIPTION | DATE |
| | | SEE SHEET 1 | |

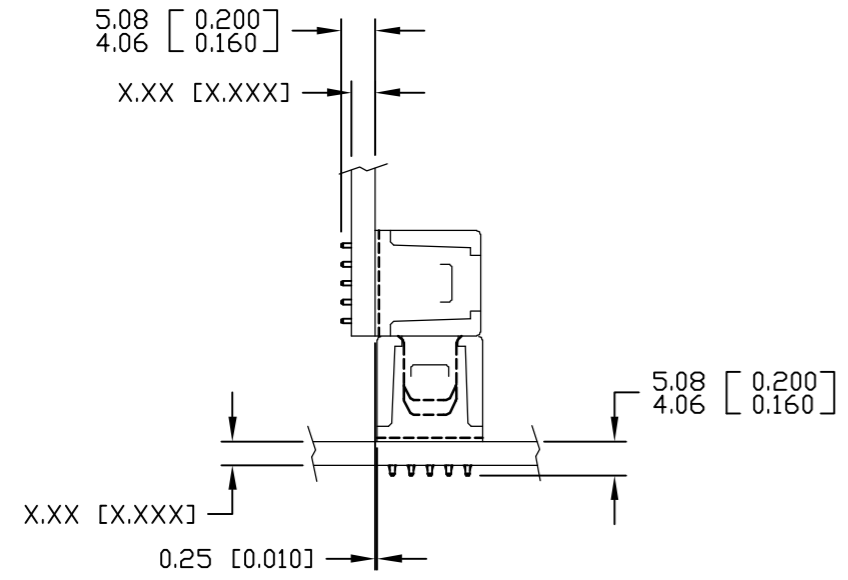


SOLDER PIN DETAIL

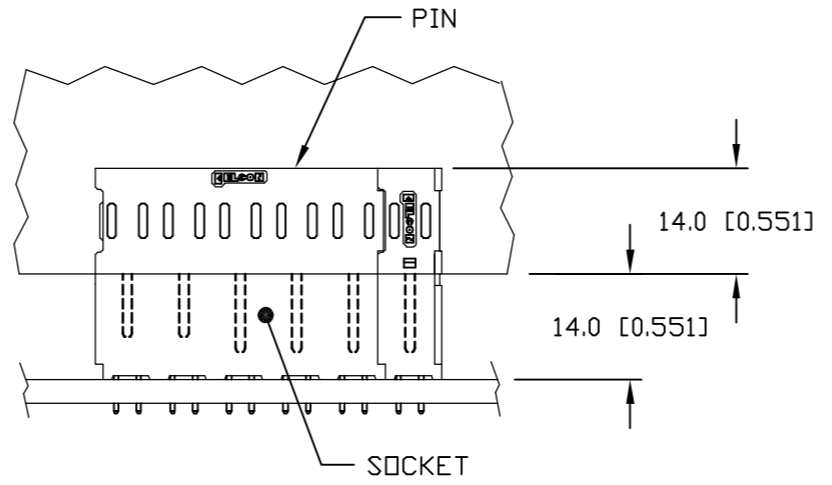


SOLDER TERMINATION AREA
RECOMMENDED PRINTED CIRCUIT HOLE

FINISHED HOLE: $\phi 1.02 [0.040] \pm .08 [0.003]$
 DRILLED HOLE: $\phi 1.15 [0.0453] \pm .013 [0.0005]$
 COPPER PLATE: .025 [0.0010] MINIMUM (PER SURFACE)
 TIN PLATE: .008 [0.0003] MINIMUM (PER SURFACE)



MATED CONDITION



| | | | | |
|--|-------------------------------------|------------------|--|--|
| ← MM OR MM [INCH] INCH THIRD ANGLE PROJECTION UNLESS OTHERWISE SPECIFIED DIMENSIONS ARE IN METRIC [INCHES] TOLERANCES ANGLES $\pm .5^\circ$ DECIMALS .XX $\pm .25 [0.010]$.X $\pm .5 [0.020]$ | DRAWN R. F. A. | DATE 1/20/06 | Tyco Electronics Corporation Menlo Park, Ca 94025 | |
| | CHECKED | | | TITLE |
| | APPROVED | | APPROVED D. CHAU 1/20/06 | USER INFORMATION SOLDER TAIL TERMINATION AND MATED CONDITION |
| | APPROVED DCA APPROVED M. ALIM | | ACAD FILE NUMBER C6766496A.DWG | |
| | | SIZE B | DWG NUMBER C = 6766496 | REV. A |
| | | DWG SCALE 1=1 | SH 3 OF 3 | |