



Chipsmall Limited consists of a professional team with an average of over 10 year of expertise in the distribution of electronic components. Based in Hongkong, we have already established firm and mutual-benefit business relationships with customers from,Europe,America and south Asia,supplying obsolete and hard-to-find components to meet their specific needs.

With the principle of “Quality Parts,Customers Priority,Honest Operation,and Considerate Service”,our business mainly focus on the distribution of electronic components. Line cards we deal with include Microchip,ALPS,ROHM,Xilinx,Pulse,ON,Everlight and Freescale. Main products comprise IC,Modules,Potentiometer,IC Socket,Relay,Connector.Our parts cover such applications as commercial,industrial, and automotives areas.

We are looking forward to setting up business relationship with you and hope to provide you with the best service and solution. Let us make a better world for our industry!



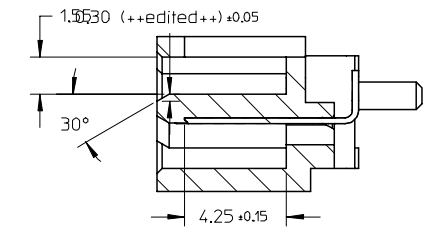
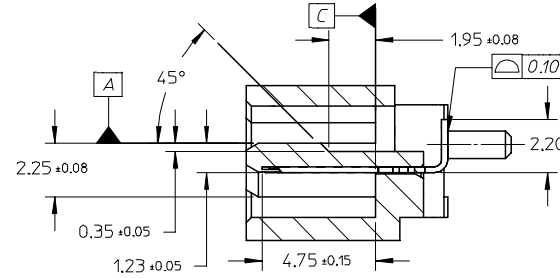
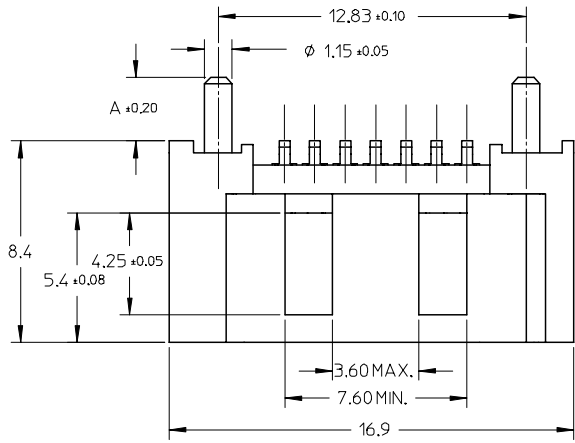
## Contact us

Tel: +86-755-8981 8866 Fax: +86-755-8427 6832

Email & Skype: info@chipsmall.com Web: www.chipsmall.com

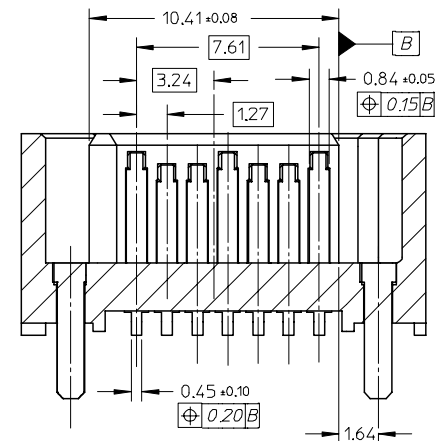
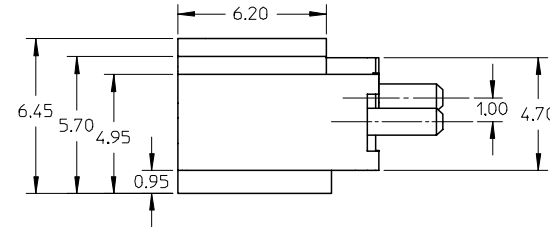
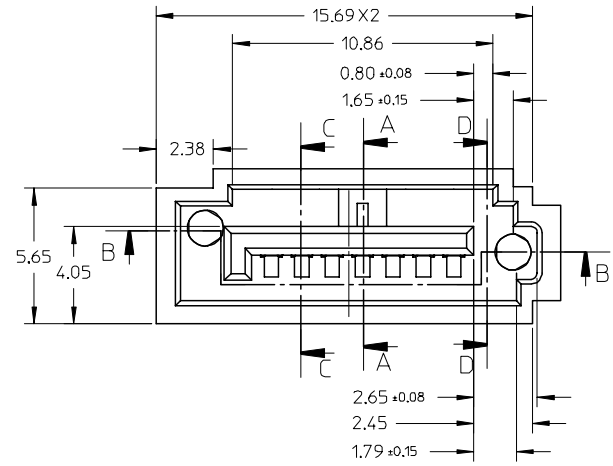
Address: A1208, Overseas Decoration Building, #122 Zhenhua RD., Futian, Shenzhen, China



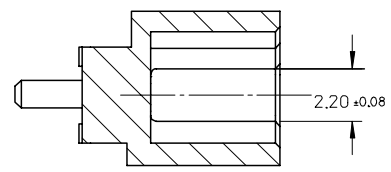


SECTION A-A

SECTION C-C



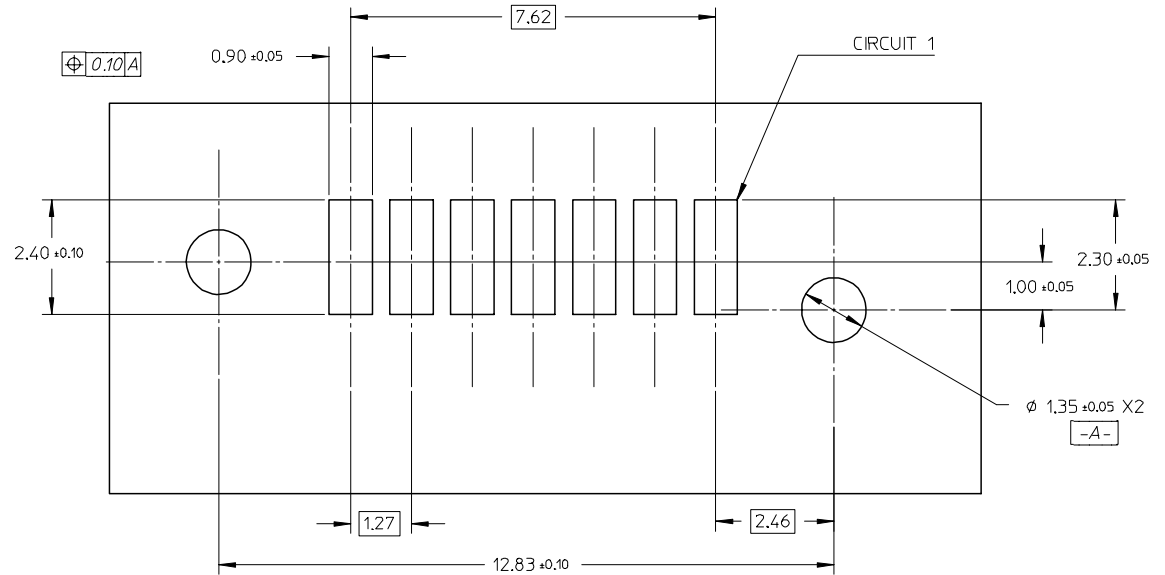
SECTION B-B



SECTION D-D

EC NO: SH2005-0037 DRWN: GRMA 2004/10/25 CHKD: 2004/10/26 APPR: YTYAP 2004/10/28	QUALITY SYMBOLS ▽ = 0 ▽ = 0	GENERAL TOLERANCES (UNLESS SPECIFIED)		SCALE 5:1	DESIGN UNITS METRIC	THIRD ANGLE PROJECTION	REVISE ON CAD ONLY			
		4 PLACES ± --- ± --- 3 PLACES ± --- ± --- 2 PLACES ± 0.15 ± --- 1 PLACE ± 0.25 ± ---	DIMENSION STYLE MM ONLY	TITLE HIGH SPEED CONNECTOR 1.27MM PITCH VERTICLE SMT SOLDER TAIL						
		ANGULAR ± 1 °	DRAFT WHERE APPLICABLE	DRAWN BY GRATE MA	DATE 2004/02/02	CHECKED BY YA JUN	DATE 2004/02/02	MATERIAL NO. SEE SHEET 2	DOCUMENT NO. SD-67800-005	SHEET NO. 1 OF 2
		MUST REMAIN WITHIN DIMENSIONS	THIS DRAWING CONTAINS INFORMATION THAT IS PROPRIETARY TO MOLEX INCORPORATED AND SHOULD NOT BE USED WITHOUT WRITTEN PERMISSION			MOLEX MOLEX INCORPORATED	B			

- NOTES:
- MATERIAL:  
HOUSING: HIGH TEMPERATURE THERMAL PLASTIC, GLASS FILLED, UL94V-0, COLOR : BLACK  
TERMINAL: BRASS  
POST: BRASS
  - TERMINAL PLATING :  
CONTACT AREA : (a) GOLD FLASH  
(b) GOLD, THICKNESS=0.76 MICRON MINIMUM  
(c) GOLD, THICKNESS=0.38 MICRON MINIMUM  
SOLDER TAIL: TIN-LEAD OR TIN, THICKNESS=1.27 MICRON MINIMUM,  
UNDER PLATE: NICKEL, THICKNESS=1.27 MICRON MINIMUM.
  - POST PLATING: UNDER PLATE: NICKEL, THICKNESS=1.25 MICRON MINIMUM  
TIN/LEAD OR TIN, THICKNESS=1.9 MICRON MINIMUM OVER ALL
  - PACKAGING: PK-67800-002
  - PRODUCT SPECIFICATION REFER TO PS-67491-001
  - RECOMMENDED SOLDERING PROCESS: IR PROCESS.



RECOMMENDED P.C.B LAYOUT  
CONNECTOR SIDE

678005025	SEE NOTE2(c)	3.45	PURE TIN
678005022	SEE NOTE2(b)		
678005021	SEE NOTE2(a)		
678005015	SEE NOTE2(c)		
678005012	SEE NOTE2(b)	3.05	TIN-LEAD
678005011	SEE NOTE2(a)		
678005005	SEE NOTE2(c)		
678005002	SEE NOTE2(b)	2.65	TIN-LEAD
678005001	SEE NOTE2(a)		
678001025	SEE NOTE2(c)		
678001022	SEE NOTE2(b)	3.45	TIN-LEAD
678001021	SEE NOTE2(a)		
678001015	SEE NOTE2(c)	3.05	TIN-LEAD
678001012	SEE NOTE2(b)		
678001011	SEE NOTE2(a)		
678001005	SEE NOTE2(c)	2.65	TIN-LEAD
678001002	SEE NOTE2(b)		
678001001	SEE NOTE2(a)		
MATERIAL NO	PLATING TYPE	DIM A	REMARK

EC NO: SH2005-0037 DRWN: GRMA 2004/10/25 CHKD: 2004/10/26 APPR: YTYAP 2004/10/28	QUALITY SYMBOLS ▽ = 0 ▽C = 0	GENERAL TOLERANCES (UNLESS SPECIFIED)		SCALE 5:1	DESIGN UNITS METRIC	THIRD ANGLE PROJECTION	REVISE ON CAD ONLY
		mm	INCH	DIMENSION STYLE MM ONLY		TITLE HIGH SPEED CONNECTOR 1.27MM PITCH VERTICLE SMT SOLDER TAIL	
DESCRIPTION	4 PLACES ± --- ± ---	DRAWN BY DATE GRATE MA 2004/02/02		CHECKED BY DATE YAJUN 2004/02/02		MATERIAL NO. DOCUMENT NO. SHEET NO. SEE CHART SD-67800-005 2 OF 2	
	3 PLACES ± --- ± ---	APPROVED BY DATE SAM 2004/02/02		THIS DRAWING CONTAINS INFORMATION THAT IS PROPRIETARY TO MOLEX INCORPORATED AND SHOULD NOT BE USED WITHOUT WRITTEN PERMISSION		B	
2 PLACES ± 0.15 ± ---	DRAFT WHERE APPLICABLE						
1 PLACE ± 0.25 ± ---	MUST REMAIN WITHIN DIMENSIONS						
ANGULAR ± 1 °							