



Chipsmall Limited consists of a professional team with an average of over 10 year of expertise in the distribution of electronic components. Based in Hongkong, we have already established firm and mutual-benefit business relationships with customers from,Europe,America and south Asia,supplying obsolete and hard-to-find components to meet their specific needs.

With the principle of "Quality Parts,Customers Priority,Honest Operation,and Considerate Service",our business mainly focus on the distribution of electronic components. Line cards we deal with include Microchip,ALPS,ROHM,Xilinx,Pulse,ON,Everlight and Freescale. Main products comprise IC,Modules,Potentiometer,IC Socket,Relay,Connector.Our parts cover such applications as commercial,industrial, and automotives areas.

We are looking forward to setting up business relationship with you and hope to provide you with the best service and solution. Let us make a better world for our industry!



Contact us

Tel: +86-755-8981 8866 Fax: +86-755-8427 6832

Email & Skype: info@chipsmall.com Web: www.chipsmall.com

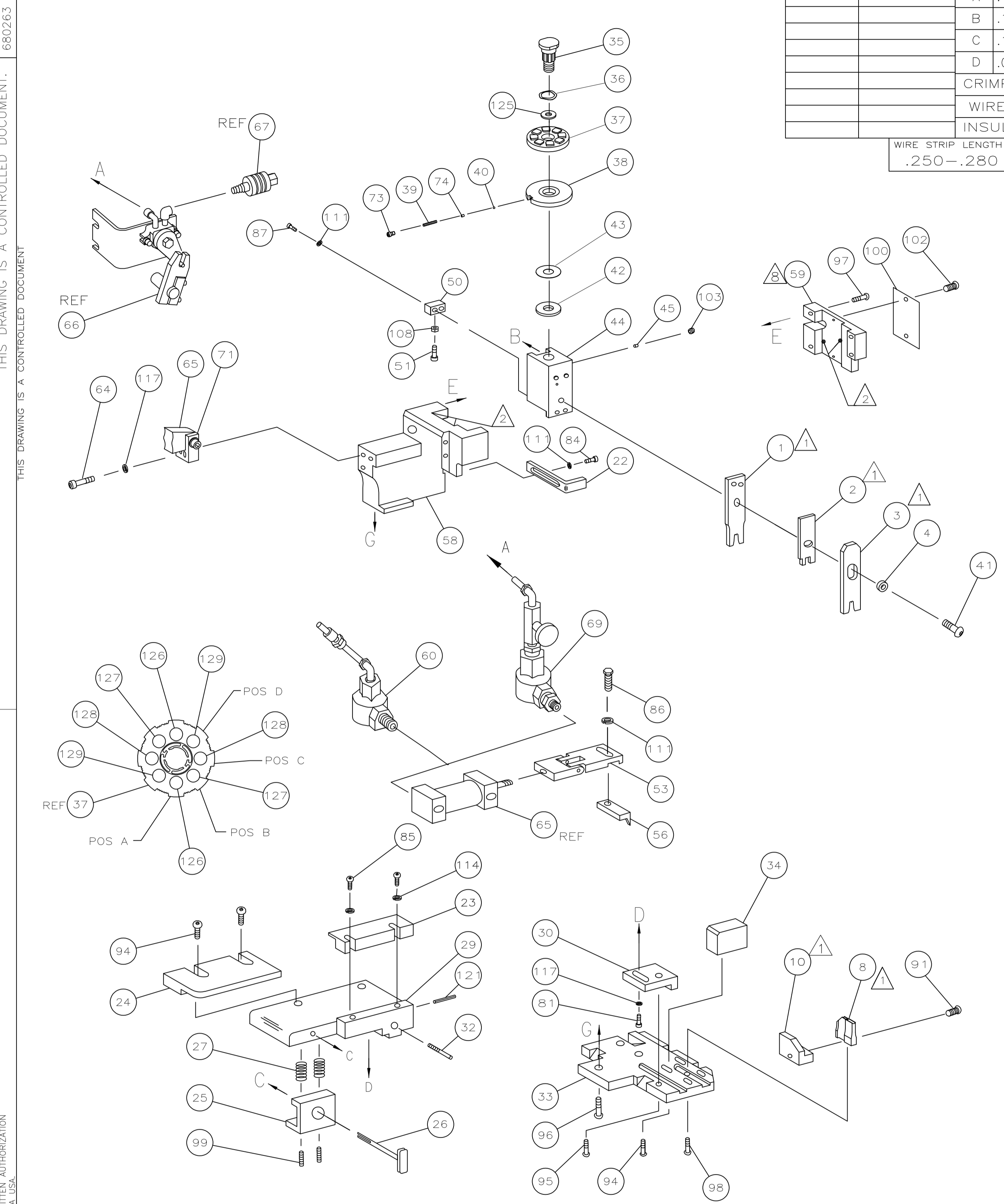
Address: A1208, Overseas Decoration Building, #122 Zhenhua RD., Futian, Shenzhen, China



PART NUMBER	REV	FIRST USED
680263-1	E	122500-1
680263-2	E	565435-5

AMP P/N		MFG P/N		CRIMPING DATA			
PAD LTR	CRIMP HEIGHT (WIRE)	PAD NO	CRIMP HEIGHT (INSUL)	WIRE SIZE			
356023	50932	A	.115 ±.005 [2.92 ±0.13mm]	5	.167 ±.005 [4.24 ±0.13mm]	10	
		B	.109 ±.005 [2.77 ±0.13mm]	4	.161 ±.005 [4.09 ±0.13mm]	12	
		C	.104 ±.005 [2.64 ±0.13mm]	6	.137 ±.005 [3.48 ±0.13mm]	14	
		D	.099 ±.005 [2.51 ±0.13mm]	8	.117 ±.005 [2.97 ±0.13mm]	16	
CRIMP		SIZE	TYPE	RANGE			
WIRE		.200 [5.08mm]	OVERLAP	16-10			
INSUL		.275 [6.99mm]	OVERLAP	Ø.167 MAX			
WIRE STRIP LENGTH	TERM APPL SPEC	FEED	APPL INSTRUCTION	SET UP GAGE	LAYOUT		
.250-.280	NONE	.773	408-8040	458637-1	L1733		

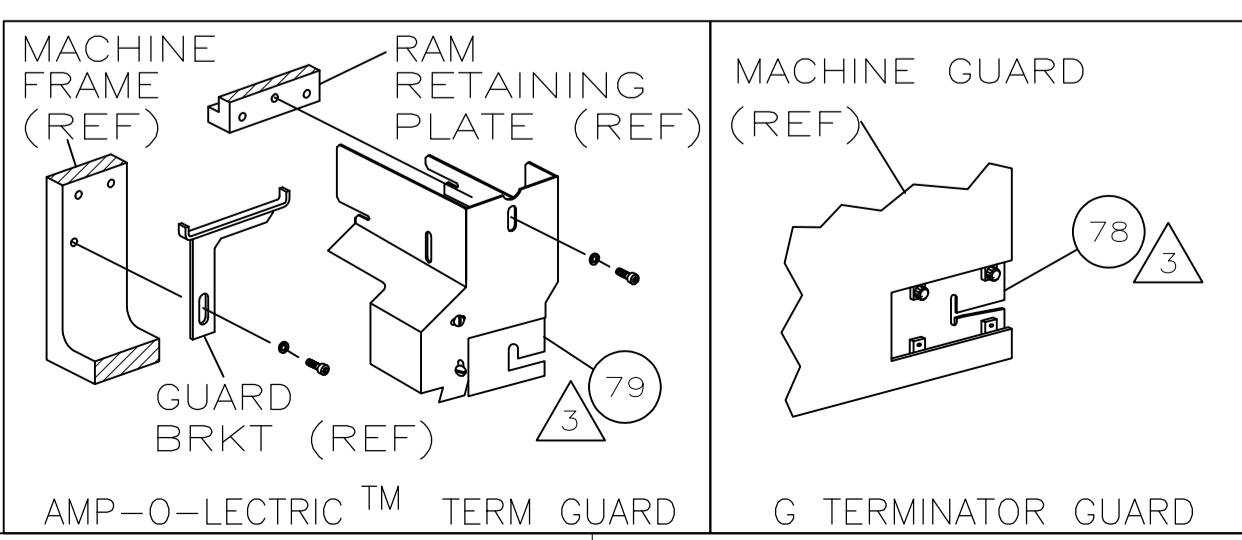
-1	LEADMAKER OR BENCH MODEL G	AIRFEED
-2	BENCH MODEL K	AIRFEED



QTY REQD PER ASSY	QTY	PART NO	DESCRIPTION	ITEM NO	
2	2	7-354778-7	PIN, WIRE DISC (.2880)D	129	
2	2	6-354778-9	PIN, WIRE DISC (.2840)C	128	
2	2	5-354778-7	PIN, WIRE DISC (.2780)B	127	
2	2	5-354778-1	PIN, WIRE DISC (.2750)A	126	
1	1	986950-1	WASHER, FLAT PRECISION	125	
1	1	217238-1	DOCUMENTATION PACKAGE	124	
1	1	4088040	SF APPL INST 408-8040	123	
1	1			122	
1	1	3-21028-8	PIN,SLT SPR(Ø.093X.62)ST GDE PL	121	
				120	
				119	
				118	
3	3	21024-5	WASHER, LOCK(#10)ADJ BLOCK	117	
				116	
				115	
2	2	21024-2	WASHER,LOCK(#4)FRONT STP GUIDE	114	
				113	
				112	
4	4	21024-4	WASHER,LOCK(#8)STRIPPER	111	
				110	
				109	
1	1	21018-5	NUT,HEX(NO.6)HOLDDOWN	108	
				107	
				106	
				105	
				104	
1	1	21009-2	SCR,SKT SET(1/4-20x.25 LW)RAM	103	
2	2	21017-2	SCR,DRIVE(#2x.19)ID PLATE	102	
				101	
1	1	461264-1	PLATE, IDENTIFICATION	100	
2	2	5-21006-6	SCR,SET(10-32x.75)DRAG	99	
1	1	22733-8	SCR,BHC(8-32x.38 LW)ANVIL	98	
4	4	2-21002-9	SCR,BHC(10-32x.75)CAP	97	
3	3	2-22733-8	SCR,BHC(1/4-20x.62)HSG	96	
1	1	2-21002-7	SCR,BHC(10-32x.50)SG ADJ BLK	95	
4	4	2-21002-2	SCR,BHC(8-32x.50)TERM H DWN	94	
				93	
				92	
1	1	2-21000-9	SCR,SHC(8-32x.75)REAR SHEAR	91	
				90	
				89	
				88	
				87	
2	2	2-21000-7	SCR,SHC(8-32x.48)DEP-HOLD	86	
1	1	2-22603-1	SCR,HEX HD(8-32x.38)FEED FINGER	85	
2	2	1-21000-5	SCR,SHC(4-40x.50)F ST GUIDE	84	
1	1	2-21000-7	SCR,SHC(8-32x.50)STRIPPER	83	
				82	
				81	
1	1	3-21000-4	SCR,SHC(10-32x.38)SG ADJ BL	80	
				79	
1	-	462992-7	GUARD ASSY	78	
1	-	679532-1	INSERT, GUARD	77	
				76	
				75	
1	1	690603-1	SPRING, ASSIST	74	
1	1	23030-1	SCR,SHC(6-32x.25 SL)INS DISC	73	
				72	
1	1	459610-3	MOUNT, FEED BRACKET	71	
-2	-1	U/M	PART NO	DESCRIPTION	ITEM NO

QTY REQD PER ASSY	QTY	PART NO	DESCRIPTION	ITEM NO	
4	1	692655-5	AIR FEED VALVE ASSY	70	
				69	
				68	
REF	-	24042-2	VALVE, SHUT OFF	67	
REF	-	692655-6	AIR FEED VALVE ASSY	66	
1	1	461065-1	AIR FEED ASSY (1 INCH)	65	
2	2	3-21000-9	SCR,SHC(10-32x1.00)AIR ASSY	64	
				63	
				62	
				61	
-	1	692655-7	AIR FEED VALVE ASSY	60	
1	1	454220-1	CAP, RAM	59	
1	1	356487-1	HOUSING	58	
				57	
1	1	694433-8	PAWL, FEED	56	
				55	
				54	
4	1	461062-1	FEED FINGER ASSY	53	
				52	
1	1	811242-2	BUMPER, HOLDDOWN	51	
1	1	690753-1	SPACER, TONKER	50	
				49	
				48	
				47	
				46	
1	1	690191-1	PLUG, NYLON	45	
1	1	455673-4	RAM	44	
1	1	690125-1	WASHER, LAMINATED	43	
1	1	1-690124-0	WASHER, RAM	42	
1	1	690686-1	BOLT, CRIMPER(5/16x1.00)	41	
1	1	23241-6	BALL, STEEL	40	
1	1	690170-1	SPRING, COMPRESSION	39	
1	1	690142-5	DISC, INSULATION	38	
1	1	354777-1	WIRE DISC, PLASTIC	37	
1	1	22480-5	WASHER, SPRING	36	
1	1	690212-1	POST, RAM	35	
1	1	690786-1	SUPPORT, TERMINAL	34	
1	1	455675-1	PLATE, BASE	33	
1	1	690432-3	SCREW, ADJUSTMENT	32	
				31	
1	1	455689-1	BLOCK, STRIP GUIDE ADJ	30	
1	1	3-455671-2	PLATE, STRIP GUIDE	29	
				28	
2	2	1-22284-0	SPRING, DRAG	27	
1	1	690546-1	LEVER, DRAG RELEASE	26	
1	1	2-690754-2	DRAG, TERMINAL	25	
1	1	7-690440-6	GUIDE, STRIP (REAR)	24	
1	1	189124-4	GUIDE, STRIP (FRONT)	23	
1	1	690472-2	STRIPPER	22	
				21	
				20	
				19	
				18	
				17	
				16	
				15	
				14	
				13	
				12	
				11	
1	1	853714-2	PLATE, REAR SHEAR	10	
				9	
1	1	318919-1	ANVIL	8	
				7	
				6	
				5	
1	1	2-238009-5	SPACER, BLOCK CRIMPER	4	
1	1	318903-1	CRIMPER, INSULATION	3	
1	1	1633967-1	BLADE, SLUG	2	
1	1	318904-1	CRIMPER, WIRE	1	
-2	-1	U/M	PART NO	DESCRIPTION	ITEM NO

- 1 RECOMMENDED SPARE PARTS.
- 2 GREASE LIGHTLY.
- 3 GUARD MUST BE IN PLACE WHEN OPERATING APPLICATOR IN A BENCH MACHINE.
- 4 SEE DRAWING FOR COMPONENTS
- 5 TERMINAL CRIMP HEIGHT
- 6 CUT TO LENGTH AT ASSY
- 7 ITEM 79 IS FOR BENCH MODEL G ONLY.
- 8 REMOVE ITEM 59, TO REMOVE APPLICATOR RAM FROM HOUSING.



THIS INFORMATION IS CONFIDENTIAL AND PROPRIETARY TO TYCO ELECTRONICS CORPORATION AND ITS WORLDWIDE SUBSIDIARIES AND AFFILIATES. IT MAY NOT BE DISCLOSED TO ANY OTHER PARTY WITHOUT THE WRITTEN AUTHORIZATION OF TYCO ELECTRONICS CORPORATION, HARRISBURG, PENNSYLVANIA, USA.

LOC A
 DIST 66
 3308-8 (1/98)

REVISION RECORD	DATE	BY	APPV
E	ECR-10-019701	9-2010	MY GB

DWN	M. O'BRINE	1-31-96	MATERIAL		HEAT TREAT	
CHK	C. ERISMAN	1-31-96				
APVD	T. ELBIN	1-31-96				

SCALE	SIZE	DRAWING NO	SHEET	REV
-	A1	680263	1 of 1	E

CUSTOMER ACCESSIBLE PRODUCTION DRAWING