



Chipsmall Limited consists of a professional team with an average of over 10 year of expertise in the distribution of electronic components. Based in Hongkong, we have already established firm and mutual-benefit business relationships with customers from,Europe,America and south Asia,supplying obsolete and hard-to-find components to meet their specific needs.

With the principle of "Quality Parts,Customers Priority,Honest Operation,and Considerate Service",our business mainly focus on the distribution of electronic components. Line cards we deal with include Microchip,ALPS,ROHM,Xilinx,Pulse,ON,Everlight and Freescale. Main products comprise IC,Modules,Potentiometer,IC Socket,Relay,Connector.Our parts cover such applications as commercial,industrial, and automotives areas.

We are looking forward to setting up business relationship with you and hope to provide you with the best service and solution. Let us make a better world for our industry!



Contact us

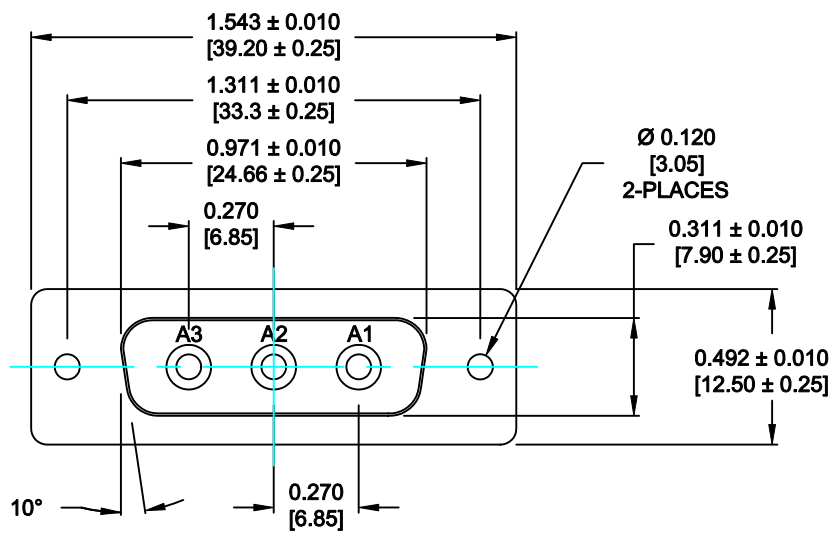
Tel: +86-755-8981 8866 Fax: +86-755-8427 6832

Email & Skype: info@chipsmall.com Web: www.chipsmall.com

Address: A1208, Overseas Decoration Building, #122 Zhenhua RD., Futian, Shenzhen, China



DESCRIPTION: POWER - SOLDER CUP - FEMALE - MACHINED



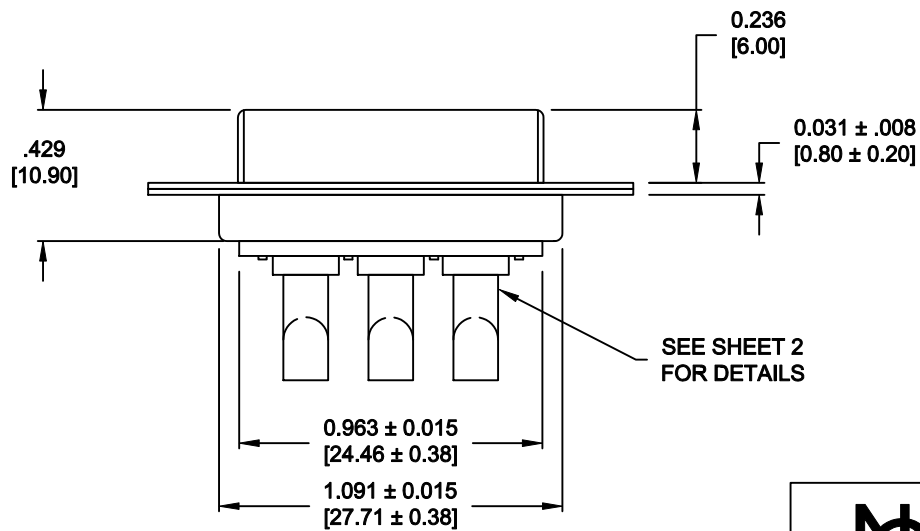
SPECIFICATIONS:

ELECTRICAL:
INSULATOR RESISTANCE: 5 G OHMS Min.
DIELECTRIC WITHSTANDING: 1,000 VAC for 1 MINUTE
OPERATING TEMPERATURE: -55° C ~ +155° C
CONTACT RESISTANCE: 1.0 Milliohms Max.
POWER PINS: SEE PART No. BELOW

MECHANICAL:
CONTACT INSERTION FORCE: 4.5 Kg Max.
CONTACT SEPARATOR FORCE: 0.3Kg Min.

MATERIALS:
CONTACTS: COPPER ALLOY
INSULATOR: PBT UL94V-0 RATED, BLK
230°C PROCESS TEMP.
STEEL

SHELL:
FINISH:
SHELL: NICKEL
CONTACTS: FULL GOLD FLASH




680M3W3203LYY1

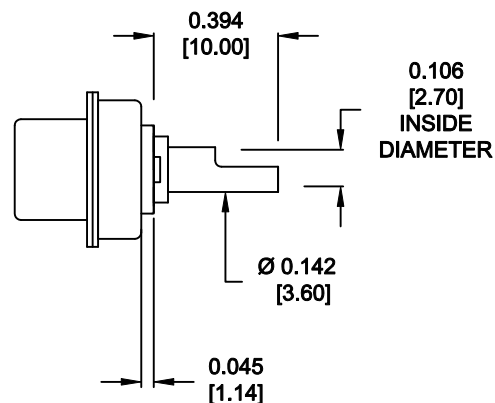
20 = 20 AMPS
40 = 40 AMPS

M = MACHINED CONTACTS

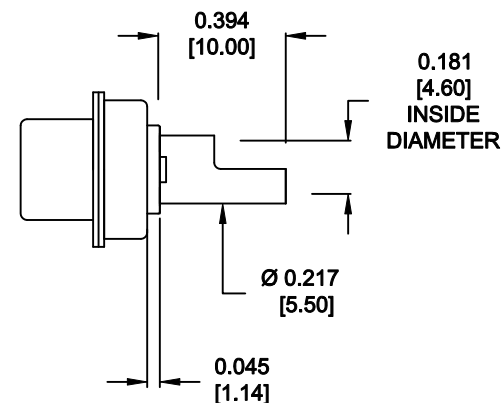
RoHS COMPLIANT

	THESE DRAWINGS AND SPECIFICATIONS ARE THE PROPERTY OF NorComp AND SHALL NOT BE REPRODUCED, COPIED OR USED AS THE BASIS FOR THE MANUFACTURE OF SALE OF APPARATUS WITHOUT WRITTEN PERMISSION.	DRAWN: M. SIGMON		DATE: 08-20-12		
		CHECKED: X		DATE: X		
NorComp		SCALE: N.T.S.	SHEET 1		OF 2	REV 0
		DWG NO. 680M3W3203LYY1				

**NOTE:
POWER CONTACTS COME
PRE-LOADED INTO INSULATORS**




**20 AMP POWER CONTACTS
ACCEPTS UP TO 12 AWG WIRE**



**40 AMP POWER CONTACTS
ACCEPTS UP TO 8 AWG WIRE**

RoHS COMPLIANT

	THESE DRAWINGS AND SPECIFICATIONS ARE THE PROPERTY OF NorComp AND SHALL NOT BE REPRODUCED, COPIED OR USED AS THE BASIS FOR THE MANUFACTURE OF SALE OF APPARATUS WITHOUT WRITTEN PERMISSION.	DRAWN: <div>M. SIGMON</div>		DATE: <div>08-20-12</div>	
		CHECKED: <div>X</div>		DATE: <div>X</div>	
<div>NorComp</div>	SCALE: <div>N.T.S.</div>		SHEET OF <div>2 2</div>		REV <div>0</div>
	DWG NO. 680M3W3203LYY1				