



Chipsmall Limited consists of a professional team with an average of over 10 year of expertise in the distribution of electronic components. Based in Hongkong, we have already established firm and mutual-benefit business relationships with customers from,Europe,America and south Asia,supplying obsolete and hard-to-find components to meet their specific needs.

With the principle of "Quality Parts,Customers Priority,Honest Operation,and Considerate Service",our business mainly focus on the distribution of electronic components. Line cards we deal with include Microchip,ALPS,ROHM,Xilinx,Pulse,ON,Everlight and Freescale. Main products comprise IC,Modules,Potentiometer,IC Socket,Relay,Connector.Our parts cover such applications as commercial,industrial, and automotives areas.

We are looking forward to setting up business relationship with you and hope to provide you with the best service and solution. Let us make a better world for our industry!



Contact us

Tel: +86-755-8981 8866 Fax: +86-755-8427 6832

Email & Skype: info@chipsmall.com Web: www.chipsmall.com

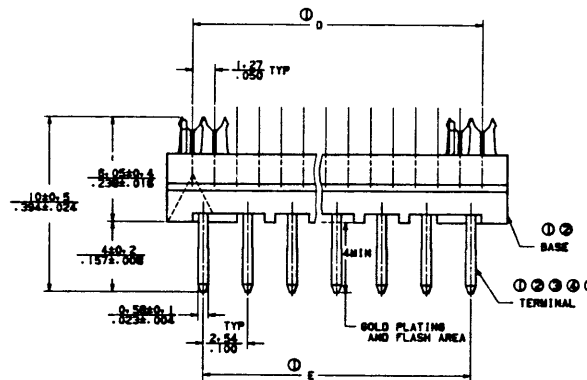
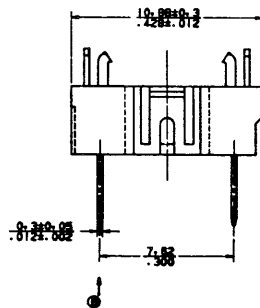
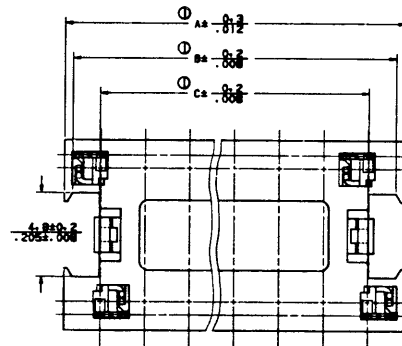
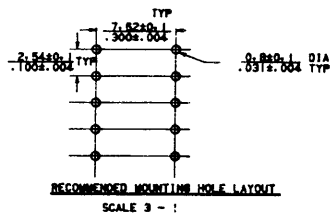
Address: A1208, Overseas Decoration Building, #122 Zhenhua RD., Futian, Shenzhen, China



PRODUCT NO.
68171

REVISIONS			
REV	DESCRIPTION	BY	DATE
B	REVISED AND REDRAWN	AS	11/3/04
C	REVISED AND REDRAWN PER ECR N05-0366	DT	12/27/05

PRODUCT NUMBER	NO. OF POSITION	A	B	C	D	E	BASE P/N	TERMINAL P/N	FINISH
68171-014/014LF	14	19.38/.763	18.38/.724	15.18/.598	16.51/.650	15.24/.600	68172-014	77102-001/001LF	ALL OVER SnPb OR Sn ③
↑-016/016LF	16	21.92/.863	20.92/.824	17.72/.698	19.05/.750	17.78/.700	-016	77102-001/001LF	ALL OVER SnPb OR Sn ③
-114/114LF	14	19.38/.763	18.38/.724	15.18/.598	16.51/.650	15.24/.600	-014	77102-002	SELECTIVE GOLD ④
-116/116LF	16	21.92/.863	20.92/.824	17.72/.698	19.05/.750	17.78/.700	-016	77102-002	SELECTIVE GOLD ④
↓-214/214LF	14	19.38/.763	18.38/.724	15.18/.598	16.51/.650	15.24/.600	-014	77102-003	SELECTIVE GOLD FLASH ⑤
68171-216/216LF	16	21.92/.863	20.92/.824	17.72/.698	19.05/.750	17.78/.700	68172-016	77102-003	SELECTIVE GOLD FLASH ⑤



NOTES:

- SEE TABLE.
- MATERIAL:
BASE - POLYESTER(PET) GLASS 30X FILLED.
COLOR: BLUE.
TERMINAL - PHOSPHOR BRONZE.
- TERMINAL FINISH: 1.27um/50u" min Ni UNDER PLATING.
P/N WITHOUT "LF" SUFFIX: ALL OVER 3.8um/150u" SnPb(93/7) PLATING;
P/N WITH "LF" SUFFIX: ALL OVER 3.8um/150u" MATTE SnPLATING;
- FINISH:
TERMINAL - SELECTIVE GOLD PLATING 0.25um(10um)min.
Ni UNDER PLATING 1.27um(50um)min.
- FINISH:
TERMINAL - SELECTIVE GOLD FLASH 0.076um(3um)min.
Ni UNDER PLATING 1.27um(50um)min.
- CONTACT RETENSION FORCE:
400gf/ea. MIN AGAINST THIS DIRECTION.
- THE P/N WITH "LF" SUFFIX IS LEAD FREE PART NUMBER;
- THE PACKAGING FOR THE LEAD FREE P/N MEETS GS-14-920 SPECIFICATION;
- FOR LEAD FREE P/N THE PRODUCT MEETS EUROPEAN UNION DIRECTIVES AND OTHER COUNTRY REGULATION AS DESCRIBED IN GS-22-008.
- FOR LEAD FREE P/N, THE HOUSING WILL WITHSTAND EXPOSURE TO 260 DEGREE C FOR 10 SECONDS IN A WAVE SOLDER APPLICATION.

**CUSTOMER COPY
FOR REFERENCE ONLY**

DO NOT SCALE DRAWING	TOLERANCES UNLESS OTHERWISE NOTED	INCH	MM	DR	MATL	DATE
	LINEAR	±0.010	±0.25	M. AIKAWA	SEE NOTE ②	11/02/04
		±0.005		CK-D		11/3/04
NEXT ASSY	USED ON			ENGR	FINISH	11/3/04
APPLICATION	THIRD ANGLE PROJECTION			APP'D	SEE NOTE ③	11/5/04
	MINI INCH					

BERG ELECTRONICS	
E. I. DU PONT DE NEMOURS & COMPANY	
NEW CUMBERLAND, PA.	
TITLE	QUICKIE MALE DIP BASE ASSY(1.300)
SCALE	DWG. NO.
5-1	68171
SHEET	1 OF 1

CAD001