



Chipsmall Limited consists of a professional team with an average of over 10 year of expertise in the distribution of electronic components. Based in Hongkong, we have already established firm and mutual-benefit business relationships with customers from,Europe,America and south Asia,supplying obsolete and hard-to-find components to meet their specific needs.

With the principle of “Quality Parts,Customers Priority,Honest Operation,and Considerate Service”,our business mainly focus on the distribution of electronic components. Line cards we deal with include Microchip,ALPS,ROHM,Xilinx,Pulse,ON,Everlight and Freescale. Main products comprise IC,Modules,Potentiometer,IC Socket,Relay,Connector.Our parts cover such applications as commercial,industrial, and automotives areas.

We are looking forward to setting up business relationship with you and hope to provide you with the best service and solution. Let us make a better world for our industry!



## Contact us

Tel: +86-755-8981 8866 Fax: +86-755-8427 6832

Email & Skype: info@chipsmall.com Web: www.chipsmall.com

Address: A1208, Overseas Decoration Building, #122 Zhenhua RD., Futian, Shenzhen, China



4

3

2

1

THIS DRAWING IS UNPUBLISHED. RELEASED FOR PUBLICATION 20  
 © COPYRIGHT 20 BY - ALL RIGHTS RESERVED.

LOC	DIST	REVISIONS					
CE	-	P	LTR	DESCRIPTION	DATE	DWN	APVD
			AI	ECR-10-006880	16OCT2012	KG	DW

- ASSEMBLY SHOWN FOR REFERENCE ONLY. SHIPPED LOOSE PIECE AS SHOWN ON PAGE 2.
- ALL ASSEMBLY DIMENSIONS ARE FOR REFERENCE ONLY.
- PANEL SHOULD BE BETWEEN 1mm AND 4mm THICKNESS.
- THIS PRODUCT HAS NOT COMPLETED VALIDATION TESTING.
- COMPLETE THE CONNECTOR ASSEMBLY BY ADDING EACH OF THE FOLLOWING PRO BEAM JR KITS:
  - EXPANDED BEAM INSERT ASSEMBLY KIT
  - FERRULE KIT, ONE PER FIBER

Side view of the connector assembly. Dimensions shown: 45 (total length), 14 (length of the ferrule section), 28 (length of the beam section), 14 (length of the ferrule section), 24 (diameter of the ferrule), 37 (diameter of the beam), and 27 (diameter of the fiber).

Top view of the connector assembly. Dimensions shown: 28<sup>+0.2</sup>/<sub>0</sub> (width) and 30<sup>+0.2</sup>/<sub>0</sub> (diameter).

△ RECOMMENDED PANEL CUT-OUT

BLACK Zn-Ni	6828413-2
HARD ANODIZE	6828413-1
FINISH	PART NUMBER

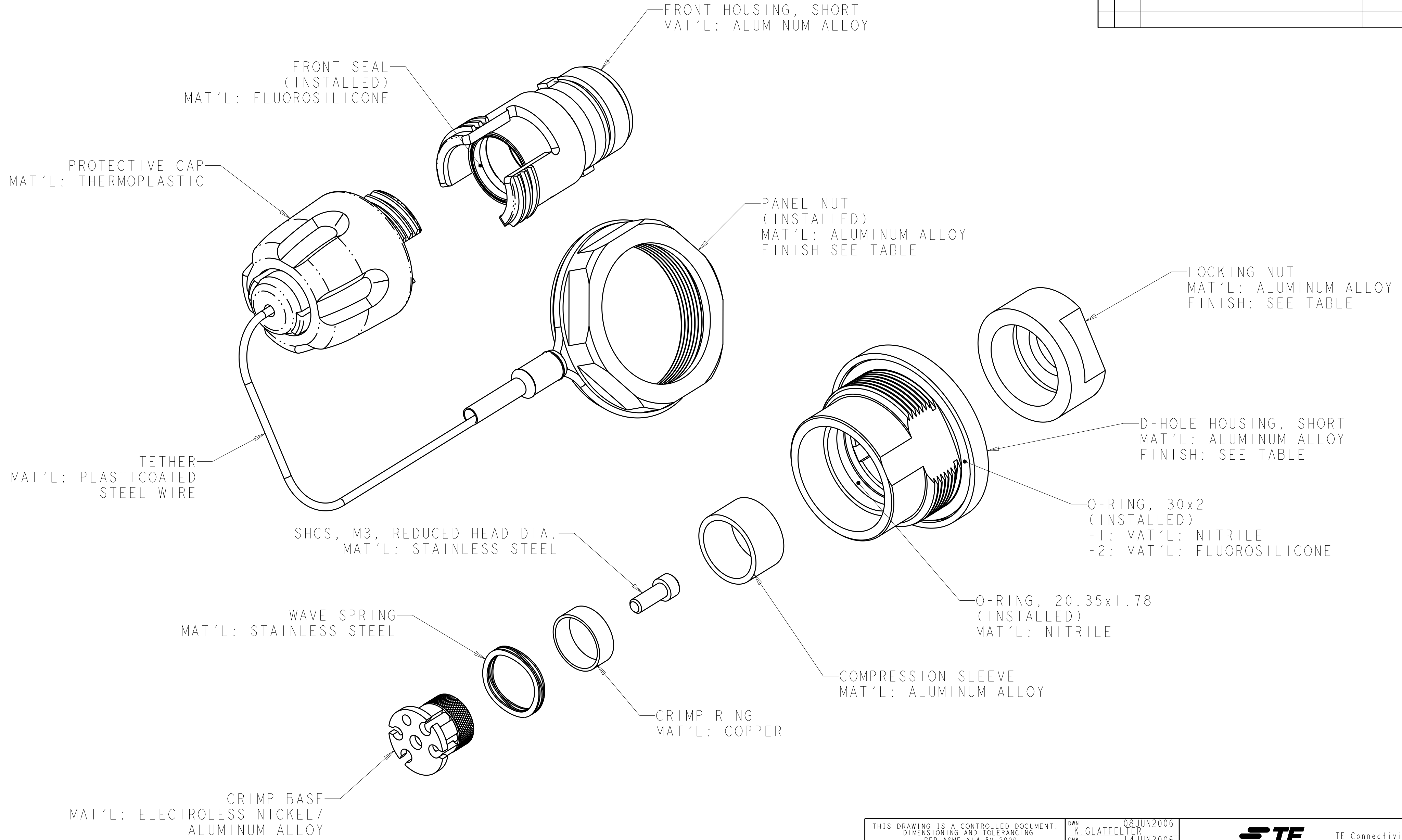
THIS DRAWING IS A CONTROLLED DOCUMENT. DIMENSIONING AND TOLERANCING PER ASME Y14.5M-2009		DWN K. GLATFELTER 08 JUN 2006	TE Connectivity	
DIMENSIONS: mm		CHK D. WERTMAN 14 JUN 2006	NAME CONNECTOR SHELL KIT, PRO BEAM JR. D-HOLE LP BULKHEAD, 2.1mm	
TOLERANCES UNLESS OTHERWISE SPECIFIED:		APVD D. WERTMAN 14 JUN 2006	RESTRICTED TO	
0 PLC ±	1 PLC ±	PRODUCT SPEC	-	
2 PLC ±	3 PLC ±	APPLICATION SPEC	-	
4 PLC ±	ANGLES ±	WEIGHT	-	
FINISH	SEE TABLE	Customer Drawing	SCALE 2:1	SHEET 1 OF 2
MATERIAL	-	SIZE	A200779	REV AI
		DRAWING NO	C-6828413	

1471-9 (3/11)

THIS DRAWING IS UNPUBLISHED. RELEASED FOR PUBLICATION 20  
 © COPYRIGHT 20 BY - ALL RIGHTS RESERVED.

LOC		DIST		REVISIONS			
P	LTR	DESCRIPTION	DATE	DWN	APVD		
-	-	SEE SHEET 1	-	-	-		

1. SHIPPED LOOSE PIECE AS SHOWN.



THIS DRAWING IS A CONTROLLED DOCUMENT. DIMENSIONING AND TOLERANCING PER ASME Y14.5M-2009		DWN K. GLATFELTER 08 JUN 2006	TE Connectivity														
DIMENSIONS: mm		CHK D. WERTMAN 14 JUN 2006															
TOLERANCES UNLESS OTHERWISE SPECIFIED:		APVD D. WERTMAN 14 JUN 2006	NAME CONNECTOR SHELL KIT, PRO BEAM JR. D-HOLE LP BULKHEAD, 2.1mm														
<table border="1"> <tr><td>0 PLC</td><td>±</td></tr> <tr><td>1 PLC</td><td>±</td></tr> <tr><td>2 PLC</td><td>±</td></tr> <tr><td>3 PLC</td><td>±</td></tr> <tr><td>4 PLC</td><td>±</td></tr> <tr><td>ANGLES</td><td>±</td></tr> <tr><td>FINISH</td><td></td></tr> </table>		0 PLC	±	1 PLC	±	2 PLC	±	3 PLC	±	4 PLC	±	ANGLES	±	FINISH		PRODUCT SPEC -	SIZE A200779
0 PLC	±																
1 PLC	±																
2 PLC	±																
3 PLC	±																
4 PLC	±																
ANGLES	±																
FINISH																	
MATERIAL AS LISTED	SEE TABLE SHEET 1	APPLICATION SPEC -	CAGE CODE C-6828413														
Customer Drawing		WEIGHT -	RESTRICTED TO -														
		SCALE 2:1	SHEET 2 OF 2														