



Chipsmall Limited consists of a professional team with an average of over 10 year of expertise in the distribution of electronic components. Based in Hongkong, we have already established firm and mutual-benefit business relationships with customers from,Europe,America and south Asia,supplying obsolete and hard-to-find components to meet their specific needs.

With the principle of “Quality Parts,Customers Priority,Honest Operation,and Considerate Service”,our business mainly focus on the distribution of electronic components. Line cards we deal with include Microchip,ALPS,ROHM,Xilinx,Pulse,ON,Everlight and Freescale. Main products comprise IC,Modules,Potentiometer,IC Socket,Relay,Connector.Our parts cover such applications as commercial,industrial, and automotives areas.

We are looking forward to setting up business relationship with you and hope to provide you with the best service and solution. Let us make a better world for our industry!



Contact us

Tel: +86-755-8981 8866 Fax: +86-755-8427 6832

Email & Skype: info@chipsmall.com Web: www.chipsmall.com

Address: A1208, Overseas Decoration Building, #122 Zhenhua RD., Futian, Shenzhen, China



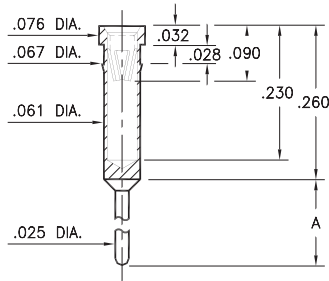
PIN RECEPTACLES

FOR .025" - .037" DIAMETER PINS AND .025" SQUARE PINS

0401/6401

X401-0-15-XX-47-XX-04-0

Press-fit in .064 mounting hole

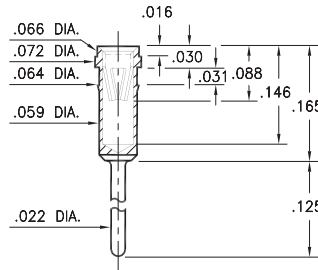


Basic Part Number	Length A
0401-0	.340
6401-0	.540

1303

1303-0-15-XX-47-XX-04-0

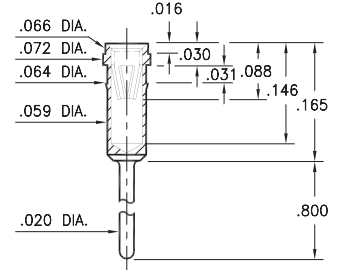
Press-fit in .061 mounting hole



8303

8303-0-15-XX-47-XX-04-0

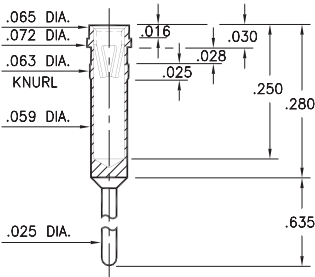
Press-fit in .061 mounting hole



4095

4095-0-15-XX-47-XX-04-0

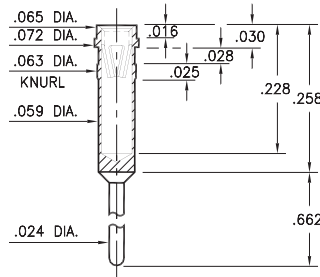
Press-fit in .061 mounting hole



4014

4014-0-15-XX-47-XX-04-0

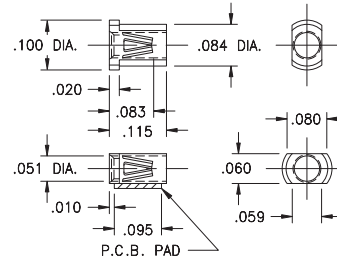
Press-fit in .061 mounting hole



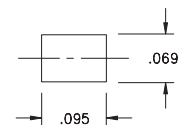
8806

8806-0-18-XX-47-XX-40-0

Surface mount
Also available on 12mm wide carrier tape:
4,000 parts per 13" reel
Order as: 8806-0-58-XX-47-XX-10-0



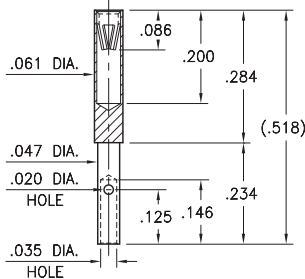
P.C.B. Layout



0722

0722-0-33-XX-47-XX-10-0

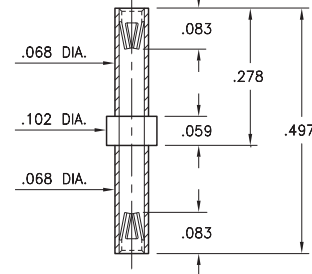
Wire crimp termination. Accepts wire sizes 22 AWG Max. / 28 AWG Min.



6839

6839-0-40-XX-47-XX-10-0

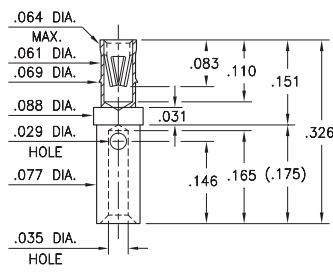
Double Ended Receptacle



6368

6368-0-33-XX-47-XX-10-0

Wire crimp termination. Accepts wire sizes 22 AWG Max. / 26 AWG Min.



SPECIFICATIONS:

Shell Material: Brass Alloy 360, 1/2 Hard

Contact Material: Beryllium Copper Alloy 172, HT

Dimensions: Inches

Tolerances On: Lengths: ±.005

Diameters: ±.002

Angles: ± 2°



ORDER CODE: XXXX - X - XX - XX - 47 - XX - XX - 0

BASIC PART #

SPECIFY SHELL FINISH:

- 01 200 μ" TIN/LEAD OVER NICKEL
- ◆ 80 200 μ" TIN OVER NICKEL (RoHS)
- ◆ 15 10 μ" GOLD OVER NICKEL (RoHS)

SPECIFY CONTACT FINISH:

- 01 200 μ" TIN/LEAD OVER NICKEL
- ◆ 80 200 μ" TIN OVER NICKEL (RoHS)
- ◆ 27 30 μ" GOLD OVER NICKEL (RoHS)

SELECT CONTACT:

#47 CONTACT (DATA ON PAGE 256)

(For alternate contact choices, see group D on page 248)

