



Chipsmall Limited consists of a professional team with an average of over 10 year of expertise in the distribution of electronic components. Based in Hongkong, we have already established firm and mutual-benefit business relationships with customers from,Europe,America and south Asia,supplying obsolete and hard-to-find components to meet their specific needs.

With the principle of “Quality Parts,Customers Priority,Honest Operation,and Considerate Service”,our business mainly focus on the distribution of electronic components. Line cards we deal with include Microchip,ALPS,ROHM,Xilinx,Pulse,ON,Everlight and Freescale. Main products comprise IC,Modules,Potentiometer,IC Socket,Relay,Connector.Our parts cover such applications as commercial,industrial, and automotives areas.

We are looking forward to setting up business relationship with you and hope to provide you with the best service and solution. Let us make a better world for our industry!



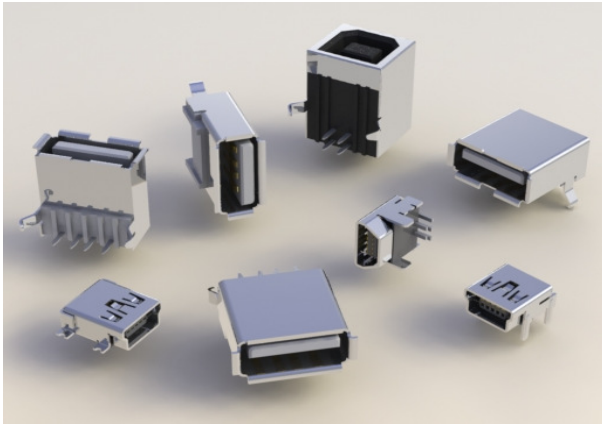
Contact us

Tel: +86-755-8981 8866 Fax: +86-755-8427 6832

Email & Skype: info@chipsmall.com Web: www.chipsmall.com

Address: A1208, Overseas Decoration Building, #122 Zhenhua RD., Futian, Shenzhen, China





FEATURES:

- Up to 480 Mbps communication speed for standard USB 2.0
- Up to 5 Gbps communication speed for standard USB 3.0
- Up to 10 Gbps communication speed for USB 3.1 Type C

Readily available in:

- Single Port position (Type C) **NEW**
- Single Port position (Type A, B, Miniature USB-A)
- Single Port position (Miniature USB-B, Miniature USB-AB)
- Single Port (IEEE 1394)
- Single Port (E-SATA)
- Dual Ports (Type A)
- Single Port - Standard USB 3.0 compliance (Type A, Type B)
- Single Port -Micro USB 3.0 compliance (Type B)
- Triple Ports (Type A)
- Quadruple Ports (Type A)
- Dual Ports -USB 3.0 compliance (Type A)
- Single Port (HDMI)
- Single Port (Mini DisplayPort)
- Dual Ports Combo - (Type A and HDMI)
- Dual Ports (HDMI)

Industry Standard Plug and play technology Hot Pluggable

Compatible with synchronous and asynchronous data transfer

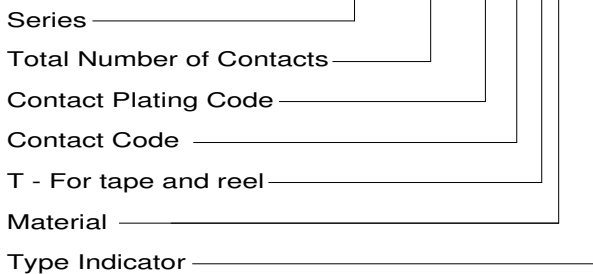
Data and power combined in one small package

RoHS Compliant

SPECIFICATIONS:

Insulator Material: UL 94V-0 Thermoplastic, PA9T or LCP
Contact Material: Phosphor Bronze or Copper Alloy
Contact Plating: Gold Plating over Nickel Plating on mating area and Tin Plating on tails
Shell Material: Brass with Tin Plating
Durability: 1500 Cycles Minimum
Mating Force: 35N Maximum (For Standard USB)
Unmating Force: 10N Minimum (For Standard USB)

EXAMPLE PART NUMBER: 690-004-220-013



Total Number of Contacts:

Single Port position (Type A, Type B, Miniature USB-A)	004
Single Port position (Miniature USB-B, Miniature USB-AB)	005
Single Port (IEEE 1394)	006
Single Port (E-SATA)	007
Dual Ports (Type A)	008
Single Port - Standard USB 3.0 compliance (Type A, Type B)	009
Single Port -Micro USB 3.0 compliance (Type B)	010
Triple Ports (Type A)	012
Quadruple Ports (Type A)	016
Dual Ports -USB 3.0 compliance (Type A)	018
Single Port (HDMI)	019
Single Port (Mini DisplayPort)	020
Dual Ports Combo - (Type A and HDMI)	023
Single Port position (Type C)	024

Contact Code:

20	Right Angle PCB (.390" Footprint)
21	Right Angle PCB (.405" Footprint)
22	Right Angle PCB (.147" Footprint)
23	Right Angle PCB (.114" Footprint)
24	Vertical with Solder Pad, Thru Hole Type
60	Vertical PCB
61	Right Angle PCB (Upright), for Type A only
95	Right Angle, Surface Mount with Metal Mounting Angles
96	Right Angle, Surface Mount with Metal Post
97	Right Angle, Surface Mount with Plastic Post
98	R/Angle, S/Mount W/Metal Post(4) Thru hole Grounding tab
99	R/Angle, S/Mount W/Metal Post(2) Thru hole Grounding tab

Material:

0	Thermoplastic White, UL 94V-0
1	PA9T Black
2	LCP White
3	Thermoplastic Black, Plastic Tray Packaging
4	LCP Black
5	PA6T Black

Type Indicator:

Standard Type A	13
Standard Type B	23
Standard Type C (3.1)	24
Miniature USB Type B	43
Miniature USB Type AB	53
Miniature Display Port	63
E-SATA 7P Male	73
Micro USB-AB	83

Contact Plating Code:

Gold Flash Plating	2
15 µin Gold	3
30 µin Gold	6

T= tape & Reel, B= Tube, C= Tray, D= Box

ORDERING CODE NOTES:

All part numbers deriving from this ordering guide may not be readily available or could be available upon request. Please contact EDAC's customer service for more inquiries.