



Chipsmall Limited consists of a professional team with an average of over 10 year of expertise in the distribution of electronic components. Based in Hongkong, we have already established firm and mutual-benefit business relationships with customers from,Europe,America and south Asia,supplying obsolete and hard-to-find components to meet their specific needs.

With the principle of “Quality Parts,Customers Priority,Honest Operation,and Considerate Service”,our business mainly focus on the distribution of electronic components. Line cards we deal with include Microchip,ALPS,ROHM,Xilinx,Pulse,ON,Everlight and Freescale. Main products comprise IC,Modules,Potentiometer,IC Socket,Relay,Connector.Our parts cover such applications as commercial,industrial, and automotives areas.

We are looking forward to setting up business relationship with you and hope to provide you with the best service and solution. Let us make a better world for our industry!



Contact us

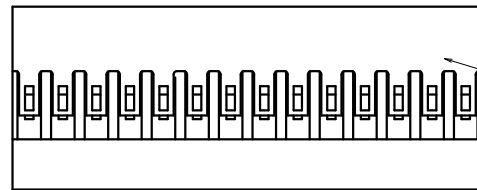
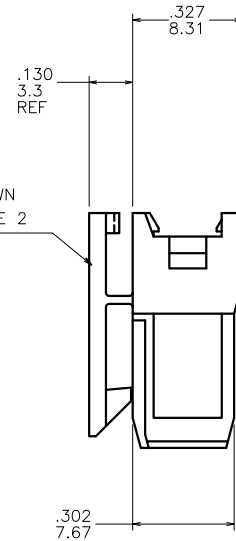
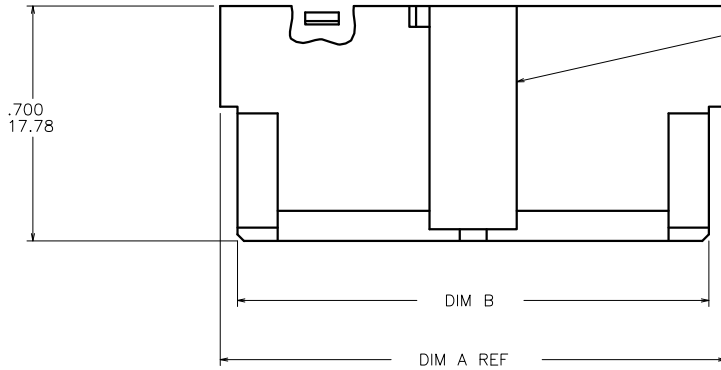
Tel: +86-755-8981 8866 Fax: +86-755-8427 6832

Email & Skype: info@chipsmall.com Web: www.chipsmall.com

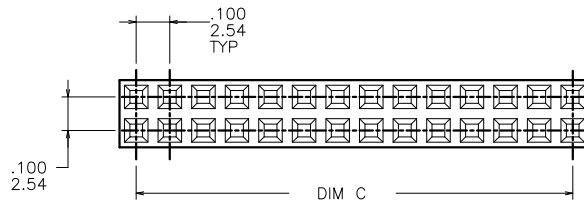
Address: A1208, Overseas Decoration Building, #122 Zhenhua RD., Futian, Shenzhen, China



PRODUCT NUMBER
SEE TABLE



HOUSING



NOTES:

- MATERIAL: MODIFIED POLYPHENELENE ETHER, COLOR BLACK, UL-94V-0.
- APPLICABLE SPECIFICATIONS:
BUS-12-067: PRODUCT SPECIFICATION
TA-75: CRIMPING INSTRUCTIONS (TERMINALS MUST BE CRIMPED PROPERLY FOR SATISFACTORY LATCHING).
TA-531: INSTALLING AND REMOVING TERMINALS
- PRODUCT MEETS EUROPEAN UNION DIRECTIVES AND OTHER COUNTRY REGULATIONS AS DESCRIBED IN GS-22-008.
- THIS PRODUCT IS NOT INTENDED TO BE EXPOSED TO MANUFACTURING SOLDER PROCESSES.

mat'l. code SEE NOTE 1				surface <input checked="" type="checkbox"/>		tolerance		projection		product family PV HOUSINGS	
tr				ecn no		date		tolerances unless otherwise specified		title	
F v06-0357				HTB		2006-04-17		angles		linear	
G v06-1045				HTB		2006-10-18		linear		INCH/MM	
H v07-0097				HTB		2007-01-31		0°±2'		scale 5:1	
J v07-0533				HTB		2007-08-21		dr		T. BREWBAKER 2006-04-17	
K v08-0033				HTB		2008-01-23		engr		T. BREWBAKER 2006-04-17	
L v09-0154				HTB		2009-04-14		chr		T. BREWBAKER 2006-04-17	
								appd		T. BREWBAKER 2006-04-17	
sheet		revision		L		L					
index		sheet		1		2					

MINI LATCH HOUSING
SHROUD ASSEMBLY

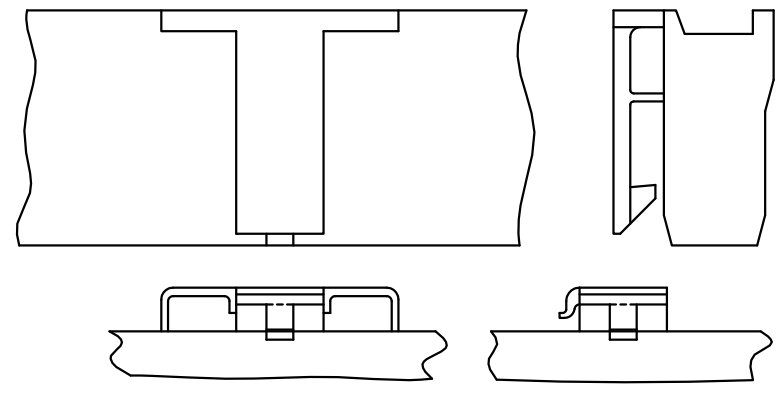
dwg no 69153 sheet 1 of 2 size A3

type Product Customer Drawing



Copyright FCJ

PRODUCT NUMBER	DIM A	DIM B	DIM C	HOUSING POS REF	LATCH STYLE
69153-001		U N A V A I L A B L E			
69153-002		U N A V A I L A B L E			
69153-003		U N A V A I L A B L E			
69153-004		U N A V A I L A B L E			
69153-005		U N A V A I L A B L E			
69153-006		U N A V A I L A B L E			
69153-007		U N A V A I L A B L E			
69153-008		U N A V A I L A B L E			
69153-009		U N A V A I L A B L E			
69153-010		U N A V A I L A B L E			
69153-011		U N A V A I L A B L E			
69153-012LF	2.606/66.19	2.519/63.98	2.400/60.96	2 X 25	2
69153-013		U N A V A I L A B L E			
69153-014		U N A V A I L A B L E			
69153-015LF	2.306/58.57	2.219/56.36	2.100/53.34	2 X 22	2
69153-016		U N A V A I L A B L E			
69153-017		U N A V A I L A B L E			
69153-018		U N A V A I L A B L E			
69153-019		U N A V A I L A B L E			
69153-020LF	1.806/45.87	1.719/43.66	1.600/40.64	2 X 17	2
69153-021		U N A V A I L A B L E			
69153-022		U N A V A I L A B L E			
69153-023LF	1.506/38.25	1.419/36.04	1.300/33.02	2 X 14	2
69153-024LF	1.406/35.71	1.319/33.50	1.200/30.48	2 X 13	2
69153-025		U N A V A I L A B L E			
69153-026		U N A V A I L A B L E			
69153-027LF	1.106/28.09	1.019/25.88	.900/22.86	2 X 10	2
69153-028		U N A V A I L A B L E			
69153-029LF	.906/23.01	.819/20.80	.700/17.78	2 X 8	1
69153-030LF	.806/20.47	.719/18.26	.600/15.24	2 X 7	1
69153-031LF	.706/17.93	.619/15.72	.500/12.70	2 X 6	1
69153-032LF	.606/15.39	.519/13.18	.400/10.16	2 X 5	1
69153-033LF	.506/12.85	.419/10.64	.300/7.62	2 X 4	1
69153-034LF	.606/15.39	.519/13.18	.400/10.16	2 X 5	1
69153-035LF	.906/23.01	.819/20.80	.700/17.78	2 X 8	1



VIEW Z LATCH STYLE 2 STYLE 1

PRODUCT NUMBER	DIM A	DIM B	DIM C	HOUSING POS REF	LATCH STYLE
CUSTOMER RESTRICTED					
69153-012ELF	2.606/66.19	2.519/63.98	2.400/60.96	2 X 25	2
69153-024ELF	1.406/35.71	1.319/33.50	1.200/30.48	2 X 13	2
69153-026ELF	1.206/30.63	1.119/28.42	1.000/25.40	2 X 11	2

mat'l. code SEE NOTE 1				surface <input checked="" type="checkbox"/> tolerance		projection		product family PV HOUSINGS	
ltr	ecn no	dr	date	tolerances unless otherwise specified				title	
L				angles	linear	INCH/MM		MINI LATCH HOUSING SHROUD ASSEMBLY	
				0°±2'		scale 5:1			
				dr	T. BREWBAKER	2006-04-17		dwg no	
				engr	T. BREWBAKER	2006-04-17		sheet 2 of 2	
				chr	T. BREWBAKER	2006-04-17		size	
				appd	T. BREWBAKER	2006-04-17		A3	
sheet		revision						type	
index		sheet						Product Customer Drawing	



Copyright FCJ