



Chipsmall Limited consists of a professional team with an average of over 10 year of expertise in the distribution of electronic components. Based in Hongkong, we have already established firm and mutual-benefit business relationships with customers from,Europe,America and south Asia,supplying obsolete and hard-to-find components to meet their specific needs.

With the principle of “Quality Parts,Customers Priority,Honest Operation,and Considerate Service”,our business mainly focus on the distribution of electronic components. Line cards we deal with include Microchip,ALPS,ROHM,Xilinx,Pulse,ON,Everlight and Freescale. Main products comprise IC,Modules,Potentiometer,IC Socket,Relay,Connector.Our parts cover such applications as commercial,industrial, and automotives areas.

We are looking forward to setting up business relationship with you and hope to provide you with the best service and solution. Let us make a better world for our industry!



## Contact us

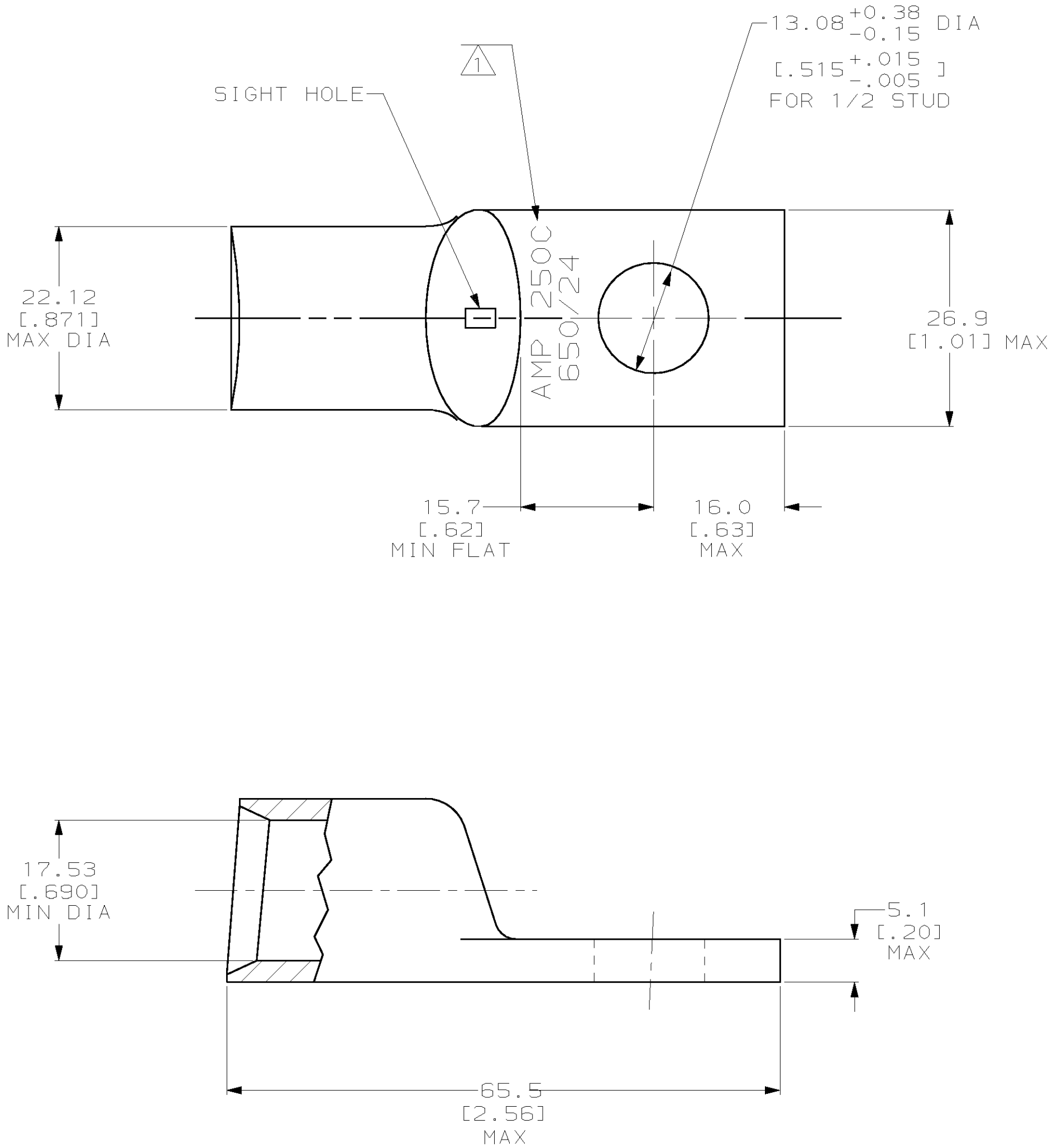
Tel: +86-755-8981 8866 Fax: +86-755-8427 6832

Email & Skype: [info@chipsmall.com](mailto:info@chipsmall.com) Web: [www.chipsmall.com](http://www.chipsmall.com)

Address: A1208, Overseas Decoration Building, #122 Zhenhua RD., Futian, Shenzhen, China



LOC	DIST	REVISIONS				
G	86	P	LTR	DESCRIPTION	DATE	DWN
			B	REV PER 063A-0561-01	090CT02	MS



1 STAMP AMP 250C 650/24 APPROX AS SHOWN

696027

696027-1

AMP  
PART NUMBER

THIS DRAWING IS A CONTROLLED DOCUMENT FOR AMP INCORPORATED. IT IS SUBJECT TO CHANGE AND THE CONTROLLING ENGINEERING ORGANIZATION SHOULD BE CONTACTED FOR THE LATEST REVISION.		DWN DK SCHRUM 20MAY96	<b>AMP</b> AMP Incorporated Harrisburg, PA 17105-3608		
DIMENSIONS: mm [INCHES]		CHK WJ VOCKROTH 21MAY96			
		APVD JL MECKLEY 21MAY96	NAME TERMINAL, SPECIAL, AMPOWER, WIRE SIZE: 250 MCM		
		PRODUCT SPEC 108-30200	SIZE A2		
MATERIAL COPPER PER ASTM B-75 ANNEALED		FINISH TIN PLATE 0.00381 [.000150] MIN THK PER ASTM B-545	WEIGHT .124 lbs	CAGE CODE 00779	DRAWING NO C-696027
CUSTOMER DRAWING			SCALE 2:1	SHEET 1 OF 1	REV B