



Chipsmall Limited consists of a professional team with an average of over 10 year of expertise in the distribution of electronic components. Based in Hongkong, we have already established firm and mutual-benefit business relationships with customers from,Europe,America and south Asia,supplying obsolete and hard-to-find components to meet their specific needs.

With the principle of “Quality Parts,Customers Priority,Honest Operation,and Considerate Service”,our business mainly focus on the distribution of electronic components. Line cards we deal with include Microchip,ALPS,ROHM,Xilinx,Pulse,ON,Everlight and Freescale. Main products comprise IC,Modules,Potentiometer,IC Socket,Relay,Connector.Our parts cover such applications as commercial,industrial, and automotives areas.

We are looking forward to setting up business relationship with you and hope to provide you with the best service and solution. Let us make a better world for our industry!



## Contact us

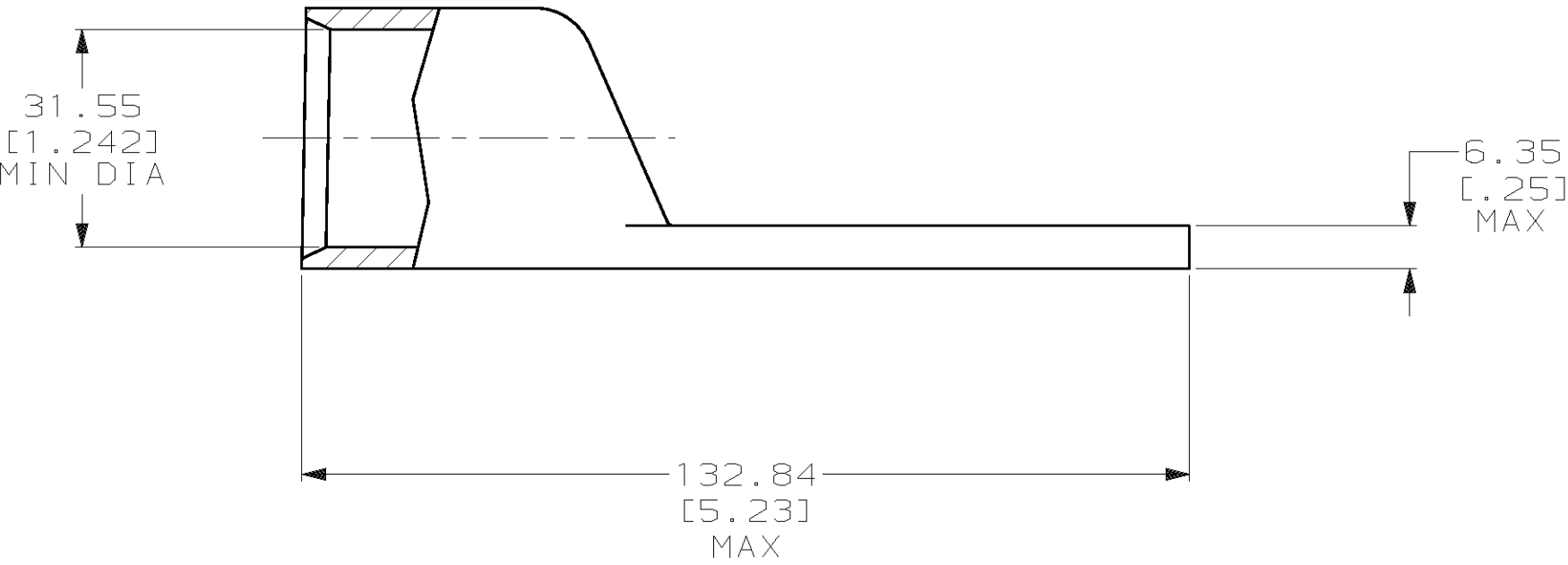
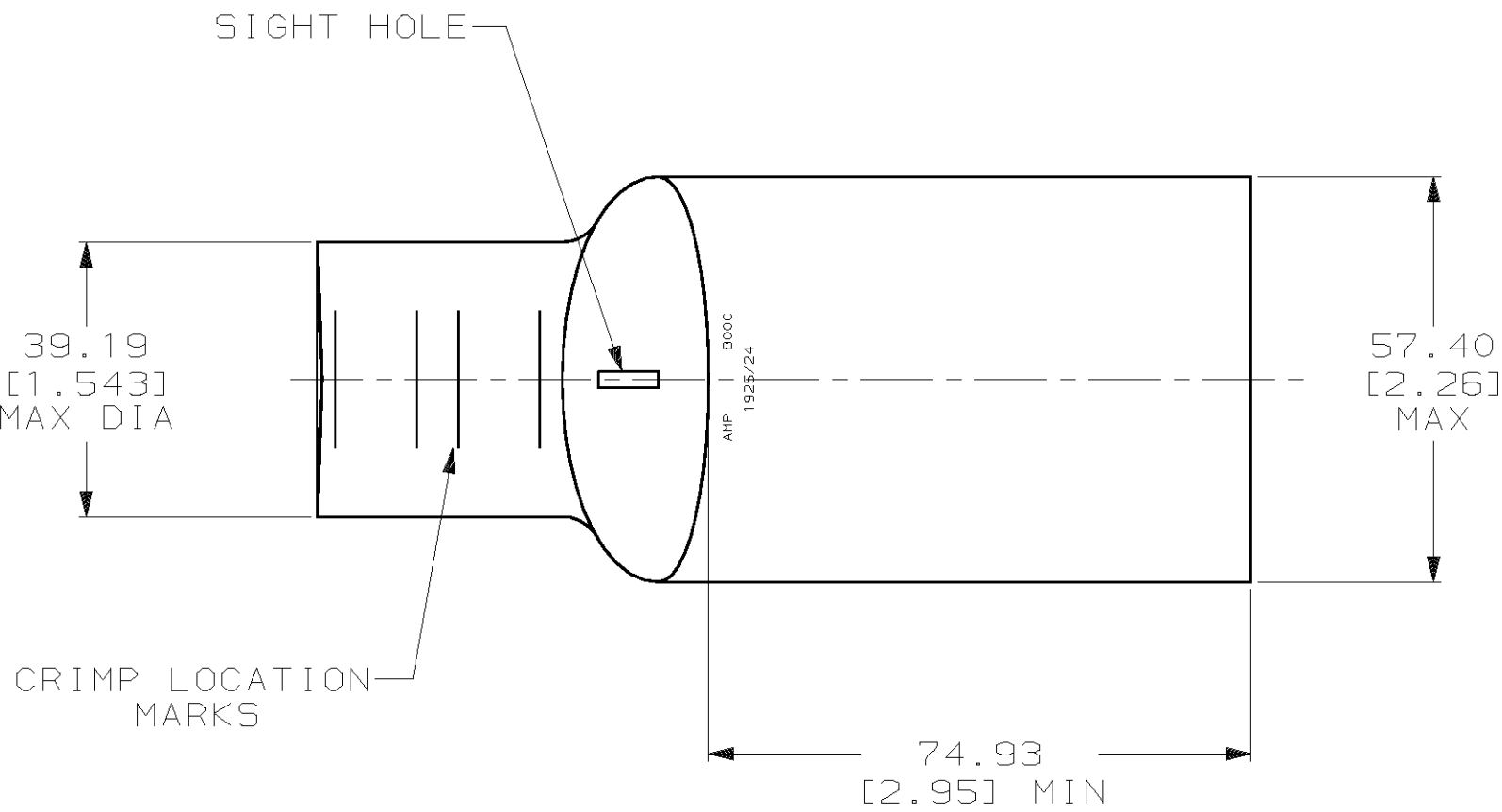
Tel: +86-755-8981 8866 Fax: +86-755-8427 6832

Email & Skype: [info@chipsmall.com](mailto:info@chipsmall.com) Web: [www.chipsmall.com](http://www.chipsmall.com)

Address: A1208, Overseas Decoration Building, #122 Zhenhua RD., Futian, Shenzhen, China



LOC	DIST			REVISIONS					
G	86	P	F	ZONE	LTR	DESCRIPTION	DATE	APPD	
				B		REV PER 063A-0561-01	090CT02	JR/MS	



- 1 CIRCULAR MIL RANGE: 750-850 MCM
- 2 CLEANED, UNPLATED
- 3 PREPRODUCTION - FASR REQ



		2	3	696279-1
		FINISH		PART NO
DO NOT SCALE PRINT. UNLESS SPECIFIED DIMENSIONS IN mm [INCHES] TOLERANCES ON : 2 PLC DEC ± 0.51 [.020] 3 PLC DEC ± - ANGLES ± -		AMP AMP INCORPORATED Harrisburg, Pa. 17105		
MATERIAL		NAME		
ANNEALED COPPER ASTM B-75		TERMINAL, AMPOWER™ WIRE SIZE: 800 MCM		
FINISH		SIZE	CAGE CODE	DRAWING NO
SEE NOTES		C	00779	696279
		SCALE	1:1	SHEET
		WEIGHT	.821 LB	1 OF 1