



Chipsmall Limited consists of a professional team with an average of over 10 year of expertise in the distribution of electronic components. Based in Hongkong, we have already established firm and mutual-benefit business relationships with customers from,Europe,America and south Asia,supplying obsolete and hard-to-find components to meet their specific needs.

With the principle of “Quality Parts,Customers Priority,Honest Operation,and Considerate Service”,our business mainly focus on the distribution of electronic components. Line cards we deal with include Microchip,ALPS,ROHM,Xilinx,Pulse,ON,Everlight and Freescale. Main products comprise IC,Modules,Potentiometer,IC Socket,Relay,Connector.Our parts cover such applications as commercial,industrial, and automotives areas.

We are looking forward to setting up business relationship with you and hope to provide you with the best service and solution. Let us make a better world for our industry!



Contact us

Tel: +86-755-8981 8866 Fax: +86-755-8427 6832

Email & Skype: info@chipsmall.com Web: www.chipsmall.com

Address: A1208, Overseas Decoration Building, #122 Zhenhua RD., Futian, Shenzhen, China



THIS DRAWING IS UNPUBLISHED.

RELEASED FOR PUBLICATION

© COPYRIGHT - BY TYCO ELECTRONICS CORPORATION. ALL RIGHTS RESERVED.

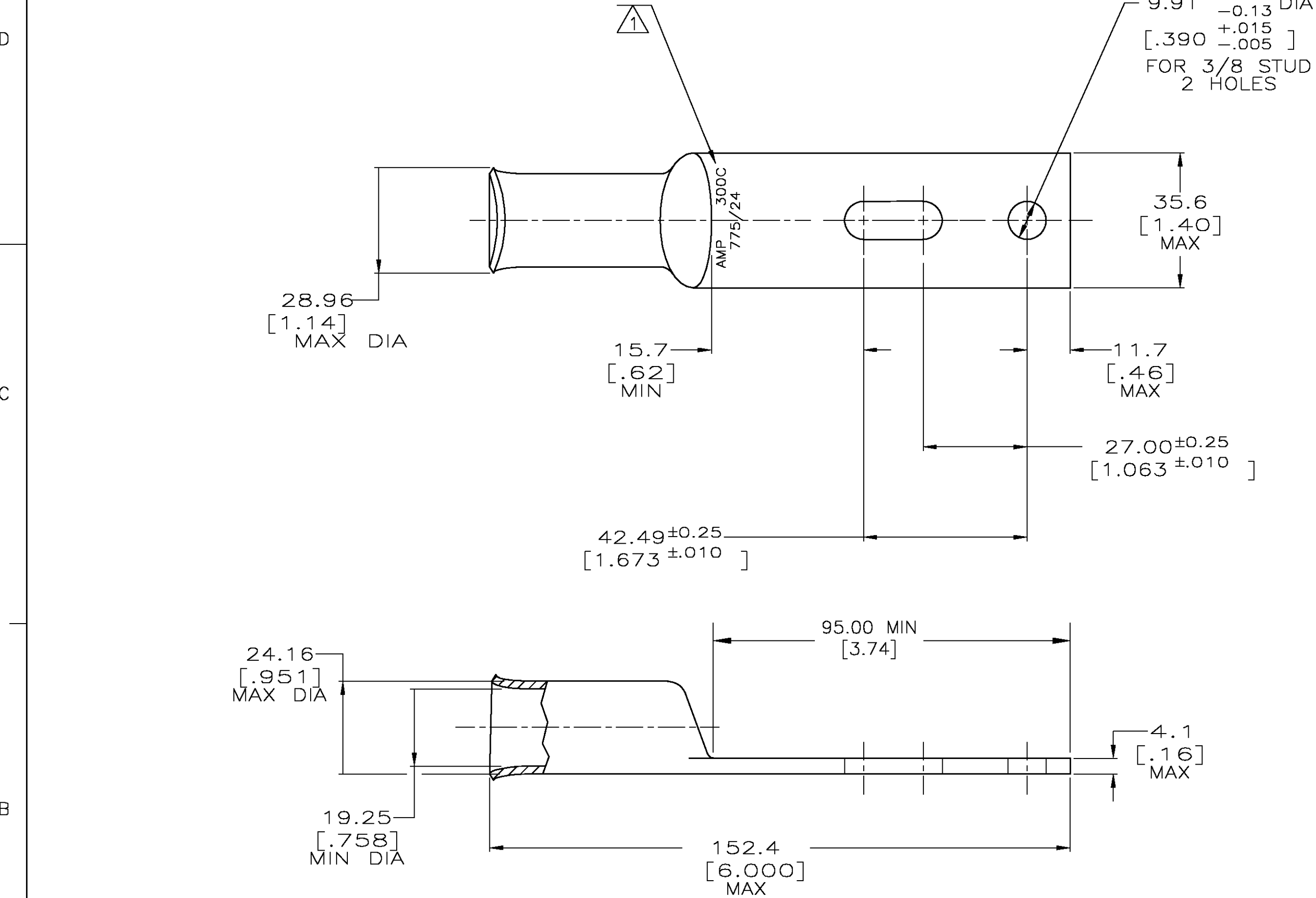
LOC	DIST	REVISIONS				
G	86	P	LTR	DESCRIPTION	DATE	APVD
		A		REL PER OG3A-0096-03	19FEB03	JR MS

D

C

B

A



- 1 STAMP AMP 300C 775/24 APPROX AS SHOWN.
- 2 CIRCULAR MIL RANGE: 275-325 MCM.
- 3 MATERIAL: ANNEALED COPPER ASTM B-188.
- 4 FINISH: 0.00381 [0.000150] MIN TIN PLATE PER ASTM B-545.

D

C

696475

B

A

THIS DRAWING IS A CONTROLLED DOCUMENT.		DWN 21NOV2002 MICHAEL S. FEHER		tyco Electronics Tyco Electronics Corporation Harrisburg, PA 17105-3608	
DIMENSIONS: mm [INCHES]		CHK 21NOV2002 MICHAEL SPICER			
TOLERANCES UNLESS OTHERWISE SPECIFIED:		APVD 21NOV2002 MICHAEL SPICER		NAME	
0 PLC ± -		PRODUCT SPEC		108-30200	
1 PLC ± -		APPLICATION SPEC		-	
2 PLC ± 0.51 [.020]		WEIGHT .350 LBS		SIZE A2	
3 PLC ± -		CUSTOMER DRAWING		CAGE CODE 00779	
4 PLC ± -		SCALE 1:1		DRAWING NO C=696475	
ANGLES ± -		SHEET 1 OF 1		RESTRICTED TO -	
FINISH 3		REV A			