



Chipsmall Limited consists of a professional team with an average of over 10 year of expertise in the distribution of electronic components. Based in Hongkong, we have already established firm and mutual-benefit business relationships with customers from,Europe,America and south Asia,supplying obsolete and hard-to-find components to meet their specific needs.

With the principle of “Quality Parts,Customers Priority,Honest Operation,and Considerate Service”,our business mainly focus on the distribution of electronic components. Line cards we deal with include Microchip,ALPS,ROHM,Xilinx,Pulse,ON,Everlight and Freescale. Main products comprise IC,Modules,Potentiometer,IC Socket,Relay,Connector.Our parts cover such applications as commercial,industrial, and automotives areas.

We are looking forward to setting up business relationship with you and hope to provide you with the best service and solution. Let us make a better world for our industry!



## Contact us

Tel: +86-755-8981 8866 Fax: +86-755-8427 6832

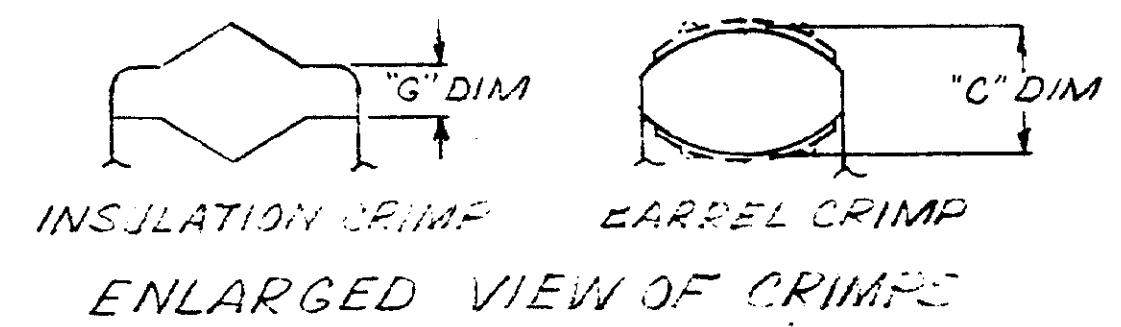
Email & Skype: info@chipsmall.com Web: www.chipsmall.com

Address: A1208, Overseas Decoration Building, #122 Zhenhua RD., Futian, Shenzhen, China

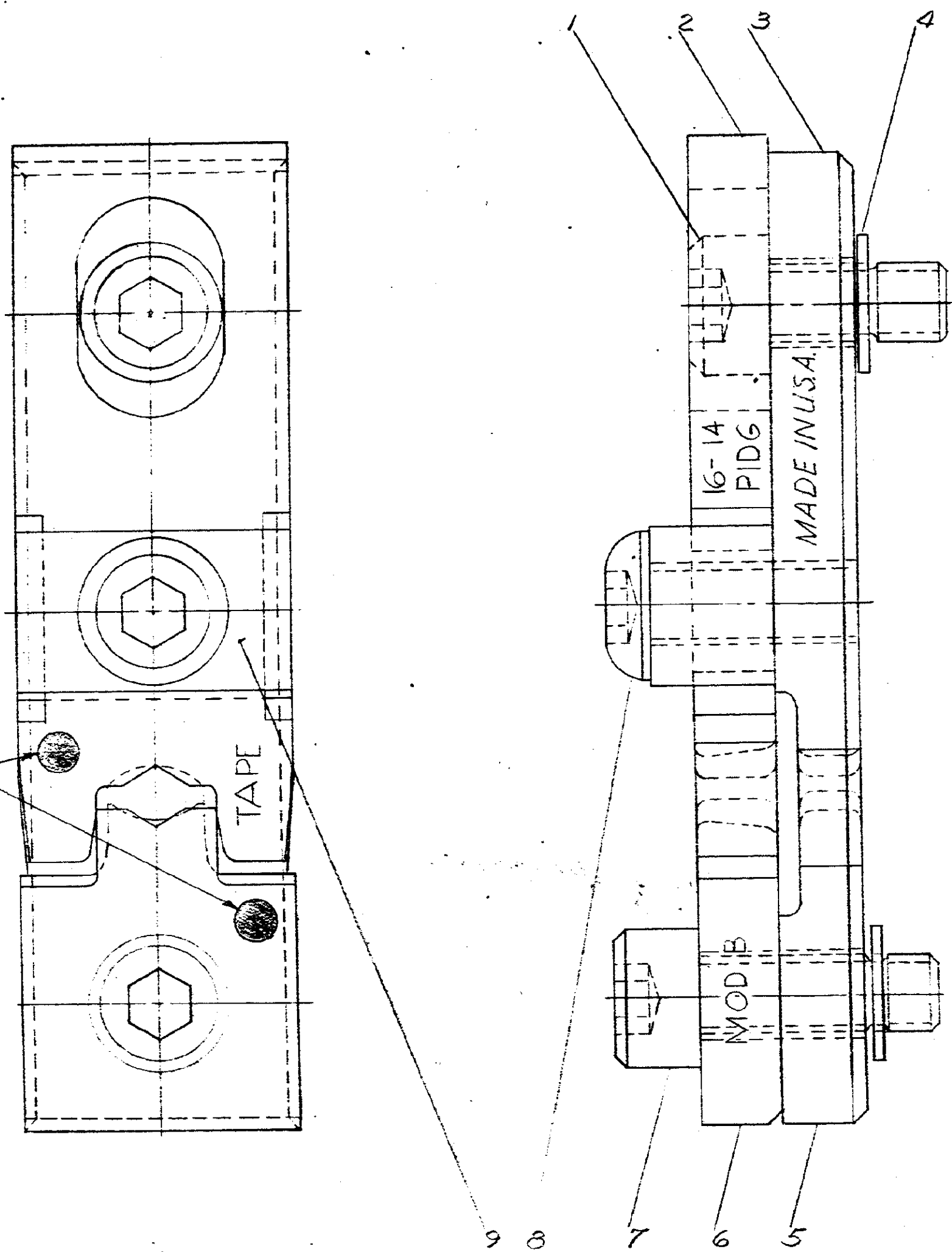
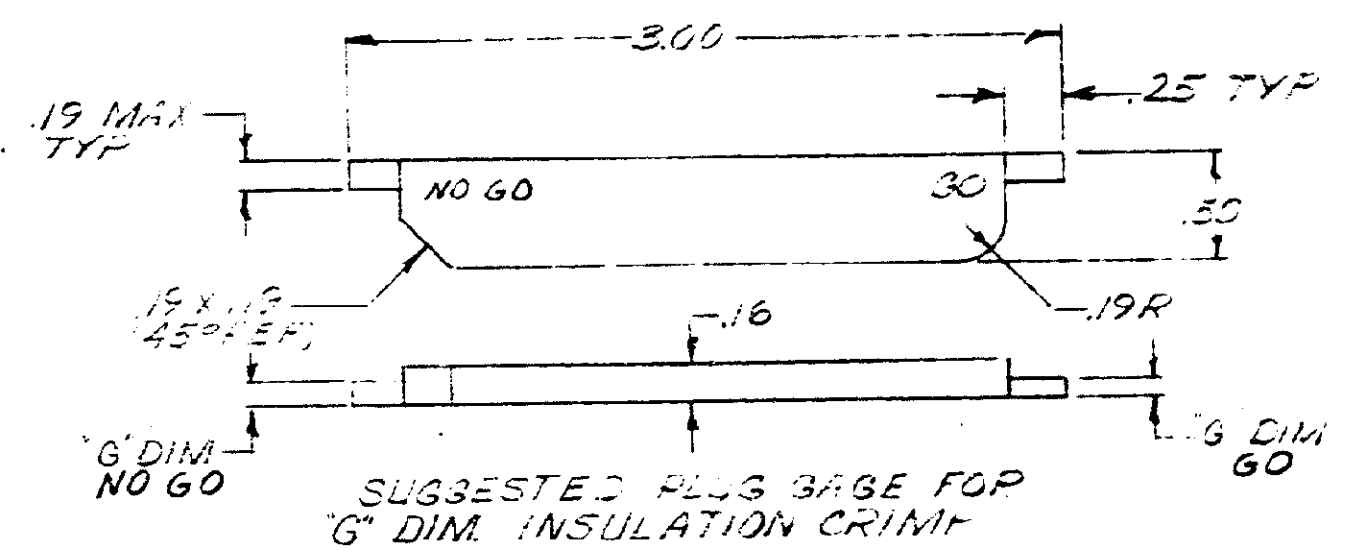
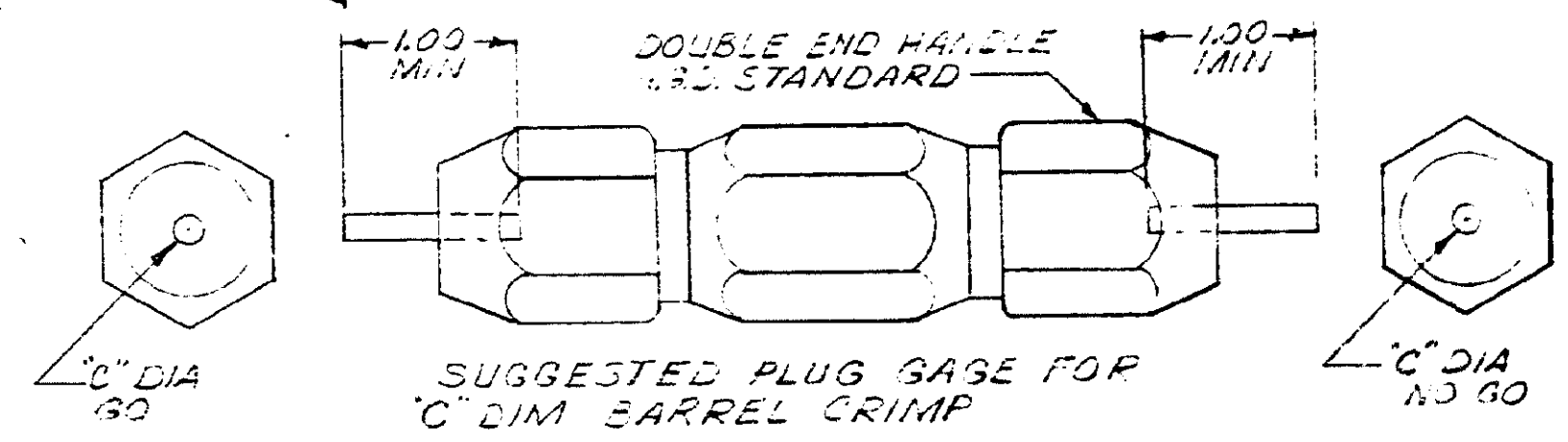


NUMBER **69873**

PLUG GAGE DIMENSIONS APPLY WHEN TOOL IS  
BOTTOMED BUT NOT UNDER PRESSURE.



"G" DIM. AT POS #1		"C" DIM	
GO	NO GO	GO	NO GO
.040	.060	.119	.125



COLOR CODED:  
BLUE

TAPE

SUPERSEDED BY IS-2423

1	307275-1	SADDLE	9
1	2-59577-9	SCREW (10-32 UNF-3A X 40 LONG)	8
1	59781-6	SCREW-SPECIAL	7
1	1-59619-8	ANVIL-INSULATION	6
1	59575-5	ANVIL	5
2	1-21046-3	RING-RETAINING	4
1	59779-3	INDENTER	3
1	307285-2	INDENTER-INSULATION	2
1	59781-2	SCREW-SPECIAL	1

DESCRIPTION	DWG SIZE	NUMBER	NAME	REMARKS	ITEM NO.
©1969 BY AMP INCORPORATED. ALL RIGHTS RESERVED. AMP PRODUCTS COVERED BY PATENTS AND/OR PATENTS PENDING.					
DR E. Shenfeld 11-24-69 CHK J. J. J. 12-1-69 DE J. J. J. 12-1-69			MATERIAL AND FINISH + + + WIRE - RANGE - INSULATION (16-14) + + + TOLERANCE EXCEPT AS NOTED ± .015 = 1" 0' SCALE 4-1 LOC MCG NO. 69873 REV 8/1		
USED ON 69875 TYPE CONTAINED CRESCENT PRE-INSUL DIAMOND GRIP				AMP INCORPORATED HARRISBURG, PENNA.	
<b>DIE ASSEMBLY MOD B</b>					

REV	REVISION RECORD	ECN	DATE
1	REVISED		12-1-69
2	SUPD BY IS-2423		1-28-71



DIMENSIONS IN INCHES DO NOT SCALE PRINT.