



Chipsmall Limited consists of a professional team with an average of over 10 year of expertise in the distribution of electronic components. Based in Hongkong, we have already established firm and mutual-benefit business relationships with customers from,Europe,America and south Asia,supplying obsolete and hard-to-find components to meet their specific needs.

With the principle of “Quality Parts,Customers Priority,Honest Operation,and Considerate Service”,our business mainly focus on the distribution of electronic components. Line cards we deal with include Microchip,ALPS,ROHM,Xilinx,Pulse,ON,Everlight and Freescale. Main products comprise IC,Modules,Potentiometer,IC Socket,Relay,Connector.Our parts cover such applications as commercial,industrial, and automotives areas.

We are looking forward to setting up business relationship with you and hope to provide you with the best service and solution. Let us make a better world for our industry!



Contact us

Tel: +86-755-8981 8866 Fax: +86-755-8427 6832

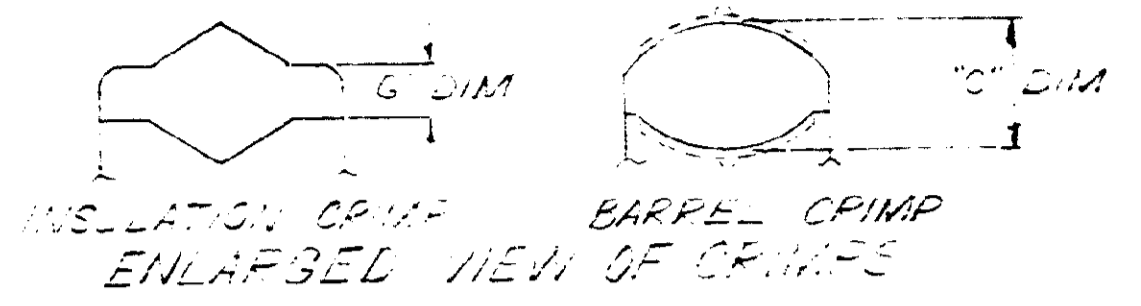
Email & Skype: info@chipsmall.com Web: www.chipsmall.com

Address: A1208, Overseas Decoration Building, #122 Zhenhua RD., Futian, Shenzhen, China

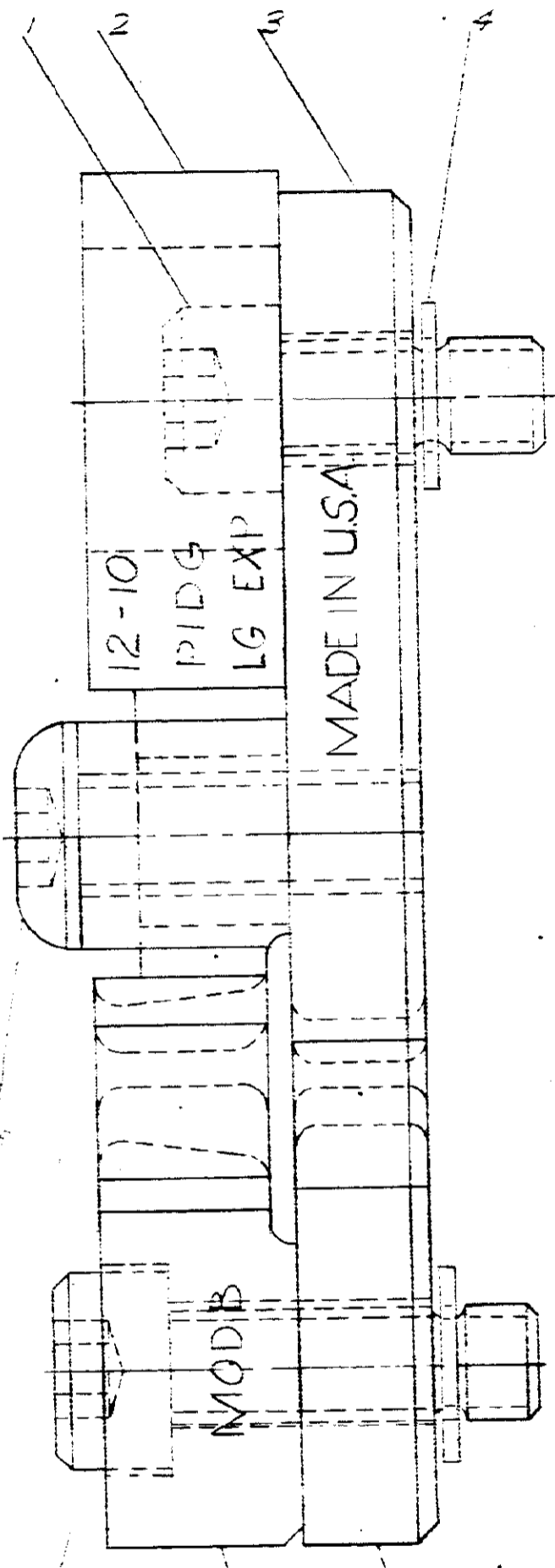
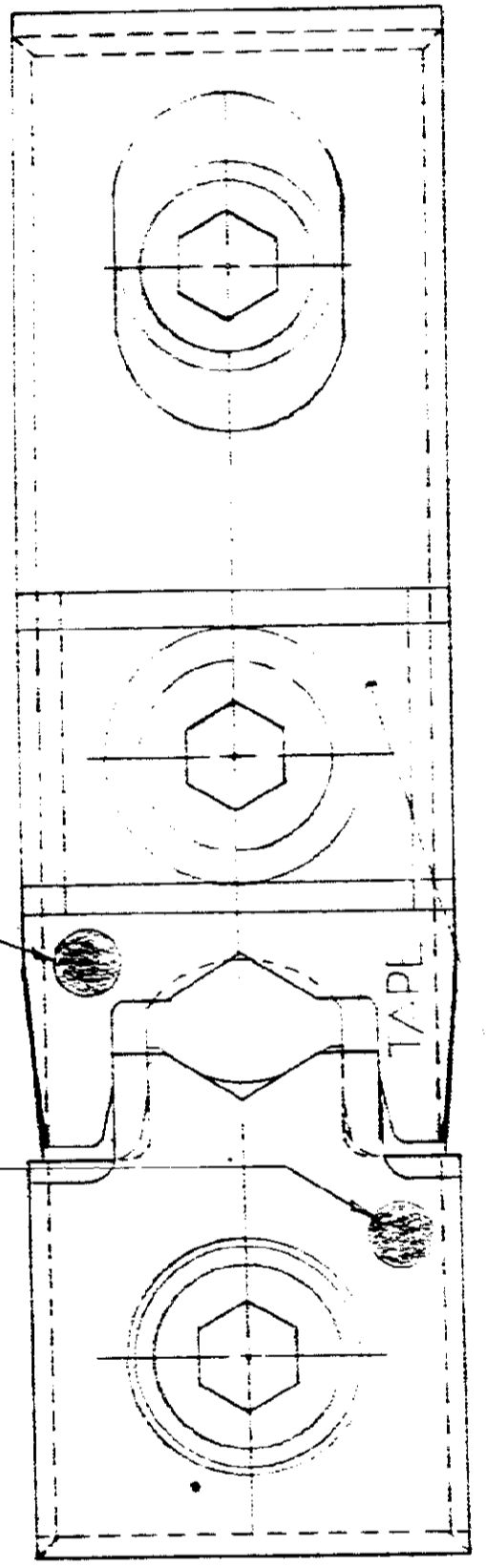
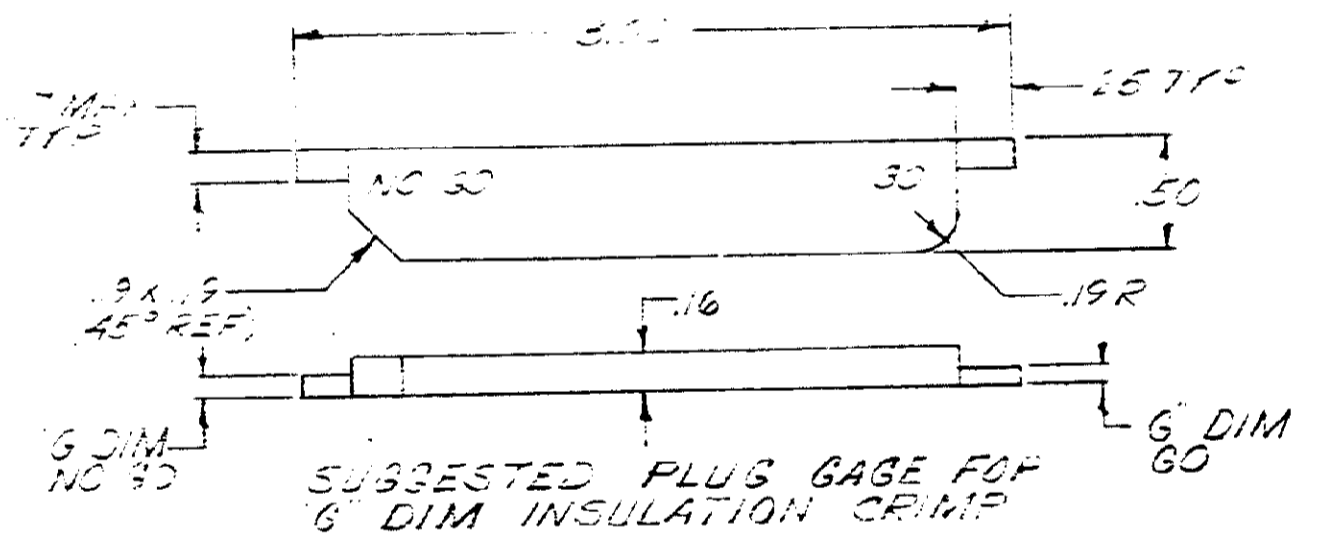
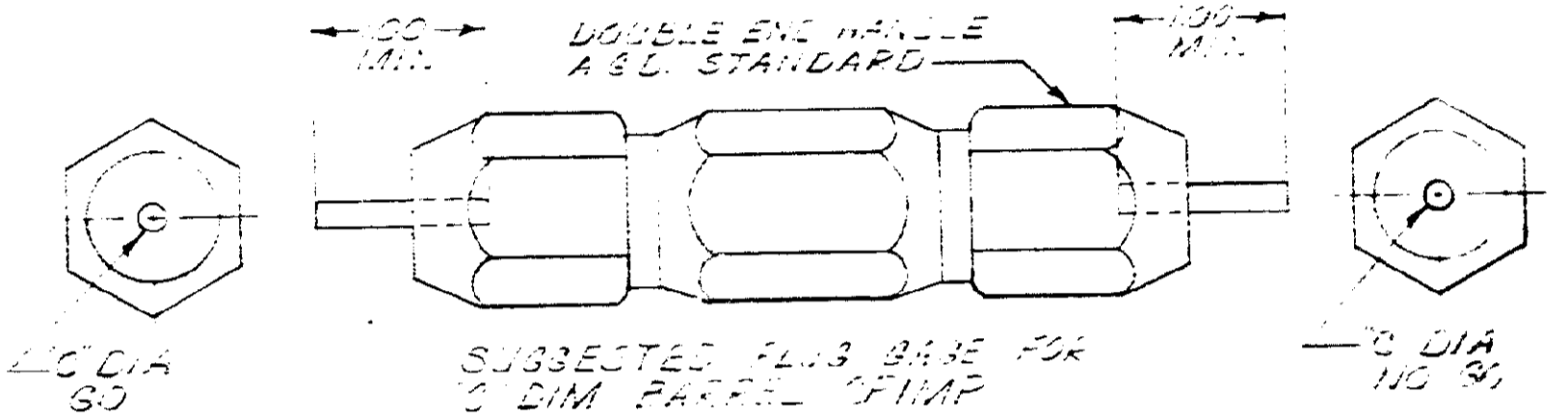


NUMBER 69897

PLUG GAGE DIMENSIONS APPLY WHEN TOOL IS
 BOTTOMED BUT NOT UNDER PRESSURE.



S DIM AT P2 #1	C DIM
90	NO 30
.064	.075



SUPERSEDED BY IS-2423

307275-2	SADDLE	3
12-59577-8	SCREEN 1032UNF-5/16 X .362 LONG	8
1 59781-5	SCREW SPECIAL	7
12-59619-2	ANVIL-INSULATION	6
1 59633-4	ANVIL	5
21-21043-3	FINIS-FETCHING	4
1 59773-1	INDENTER	3
1 307275-2	INDENTER-INSULATION	2
1 59781-1	SCREW-SPECIAL	1

DESCRIPTION	NUMBER	NAME	REMARKS	ITEM NO.
REQUIRED PER ASSEMBLY © 1969 BY AMP INCORPORATED ALL RIGHTS RESERVED. AMP PRODUCTS COVERED BY PATENTS AND/OR PATENTS PENDING.				
DR. E. Shenfeld 12-12-69 CHK. J. J. J. 12-12-69 DE. J. J. J. 12-12-69 NAME: J. J. J.			CUSTOMER COPY REFERENCE ONLY AMP AMP INCORPORATED HARRISBURG, PENNA.	
WIRE - RANGE - INSULATION 12-10 TOLERANCE EXCEPT AS NOTED ± .015 = 1" 0"		USED ON 69875 "CG PIDG LG EXP" LOC. MGI NO. 69897 DIE ASSEMBLY MOD.B		

REVISION RECORD	ECN	DATE
REVISED BY IS-2423	12-29-71	
B REVISED	12-29-71	

DIMENSIONS IN INCHES DO NOT SCALE PRINT