



Chipsmall Limited consists of a professional team with an average of over 10 year of expertise in the distribution of electronic components. Based in Hongkong, we have already established firm and mutual-benefit business relationships with customers from,Europe,America and south Asia,supplying obsolete and hard-to-find components to meet their specific needs.

With the principle of “Quality Parts,Customers Priority,Honest Operation,and Considerate Service”,our business mainly focus on the distribution of electronic components. Line cards we deal with include Microchip,ALPS,ROHM,Xilinx,Pulse,ON,Everlight and Freescale. Main products comprise IC,Modules,Potentiometer,IC Socket,Relay,Connector.Our parts cover such applications as commercial,industrial, and automotives areas.

We are looking forward to setting up business relationship with you and hope to provide you with the best service and solution. Let us make a better world for our industry!



Contact us

Tel: +86-755-8981 8866 Fax: +86-755-8427 6832

Email & Skype: info@chipsmall.com Web: www.chipsmall.com

Address: A1208, Overseas Decoration Building, #122 Zhenhua RD., Futian, Shenzhen, China





XXHV Series

High Voltage Relays

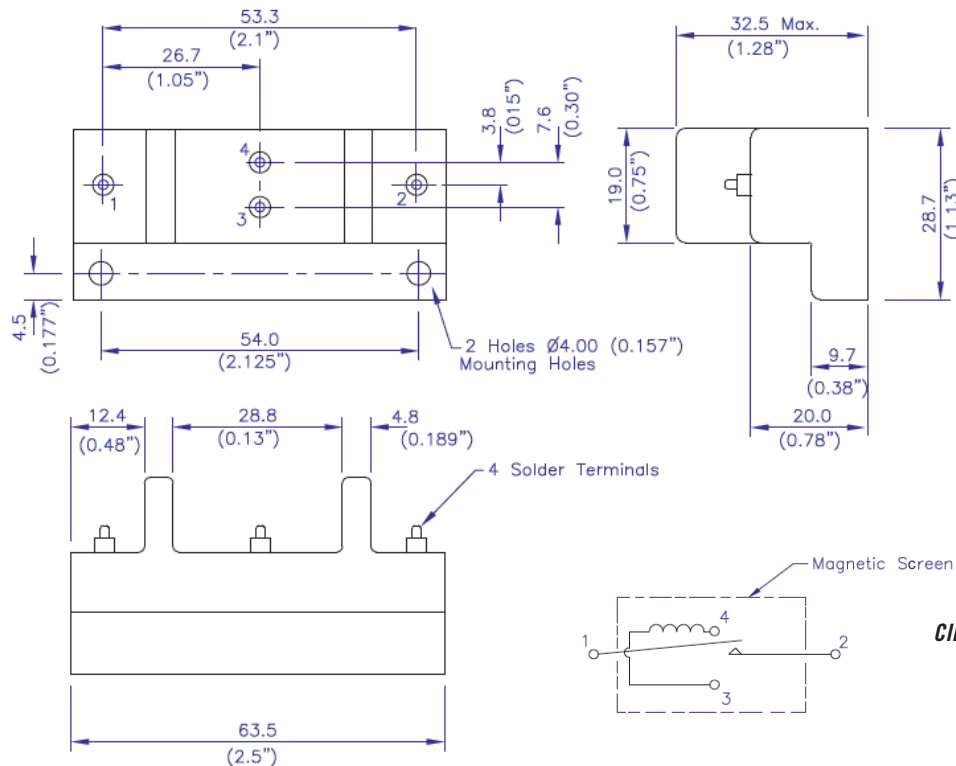


| CONTACT DATA | | | | | | |
|--------------|-----------------------|-----------------------|----------------------|-----------------------|-------------------|----------------|
| Switch | Max Switching Voltage | Max Switching Current | *Max Switching Power | Min Voltage Isolation | Max Current Carry | Max Initial CR |
| 35 | 1750V DC | 3 Amps DC/RMS | 50 Watts Resistive | 3500V DC | 4.5Amps DC/RMS | 0.100 Ohms |
| 75 | 3750V DC | | | 7500V DC | | |
| 100 | 5000V DC | | | 10000V DC | | |

*Switching power: Any combination of V & A not to exceed their individual maximum values.

| COIL DATA | | | | | | |
|-----------|-----------------------|-----------------|-----------------|-----------------|-------------|---------------------------|
| Part No. | Switching Action | Nominal Voltage | Operate Voltage | Release Voltage | Max Voltage | Resistance ±10% @25°C±5°C |
| 6HV1A | 1 Form A (1 SPST N/O) | 6V DC | 5V DC | 0.5V DC | 9V DC | 25 Ohms |
| 12HV1A | | 12V DC | 11V DC | 1.0V DC | 18V DC | 100 Ohms |
| 24HV1A | | 24V DC | 19V DC | 2.0V DC | 36V DC | 400 Ohms |
| 6HV1B | 1 Form B (1 SPST N/C) | 6V DC | 5V DC | 0.5V DC | 9V DC | 25 Ohms |
| 12HV1B | | 12V DC | 11V DC | 1.0V DC | 18V DC | 100 Ohms |
| 24HV1B | | 24V DC | 19V DC | 2.0V DC | 36V DC | 400 Ohms |

NOTES:-
 To order, specify as follows: 6HV1A35 is a 6HV1A relay with 3500Vdc (isolation) switch
 OPTION:- Relays available in form B up to 7500V



MECHANICAL DIMENSIONS

CIRCUIT DIAGRAM
Form A (N/O)

All dimensions in mm (inches)

Cynergy3 Components Ltd.
 7 Cobham Road
 Ferndown Industrial Estate
 Wimborne, Dorset BH21 7PE
 Telephone +44 (0) 1202 897969

Email:sales@cynergy3.com

ISO9001 CERTIFIED

XXHV 2016

© 2016 Cynergy3 Components, All Rights Reserved. Specifications are subject to change without prior notice. Cynergy3 Components and the Cynergy3 Components logo are trademarks of Cynergy3 Components Limited.

www.cynergy3.com