



Chipsmall Limited consists of a professional team with an average of over 10 year of expertise in the distribution of electronic components. Based in Hongkong, we have already established firm and mutual-benefit business relationships with customers from,Europe,America and south Asia,supplying obsolete and hard-to-find components to meet their specific needs.

With the principle of "Quality Parts,Customers Priority,Honest Operation,and Considerate Service",our business mainly focus on the distribution of electronic components. Line cards we deal with include Microchip,ALPS,ROHM,Xilinx,Pulse,ON,Everlight and Freescale. Main products comprise IC,Modules,Potentiometer,IC Socket,Relay,Connector.Our parts cover such applications as commercial,industrial, and automotives areas.

We are looking forward to setting up business relationship with you and hope to provide you with the best service and solution. Let us make a better world for our industry!



Contact us

Tel: +86-755-8981 8866 Fax: +86-755-8427 6832

Email & Skype: info@chipsmall.com Web: www.chipsmall.com

Address: A1208, Overseas Decoration Building, #122 Zhenhua RD., Futian, Shenzhen, China



THIS DRAWING IS UNPUBLISHED. RELEASED FOR PUBLICATION
 © COPYRIGHT - By - ALL RIGHTS RESERVED.

LOC	DIST	REVISIONS					
FT	0	P	LTR	DESCRIPTION	DATE	DWN	APVD
			D1	REVISED PER ECO-11-004917	11MAR11	RK	HMR

SPECIFICATIONS:

MATERIALS:

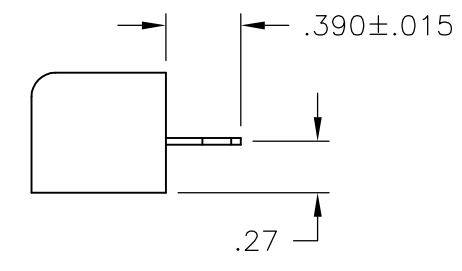
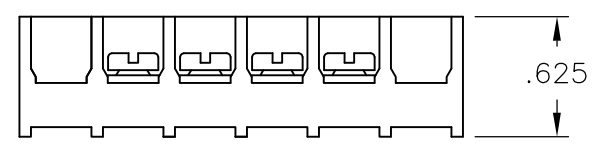
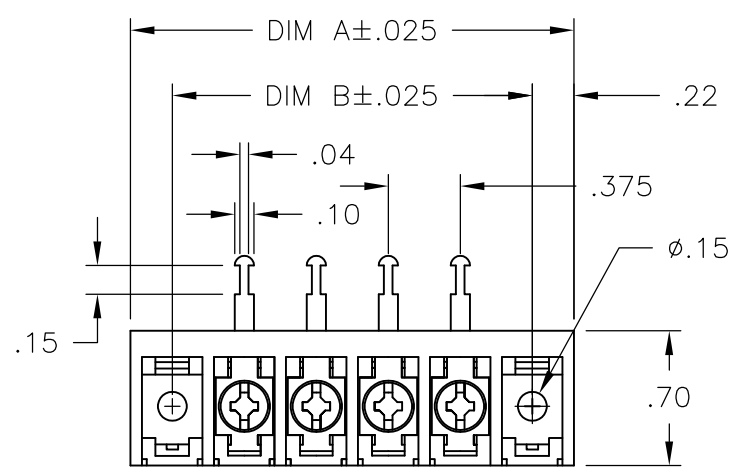
HOUSING: POLYAMIDE, (BLACK) UL94-0
 TERMINALS: COPPER ALLOY, TIN PLATE
 SCREWS: ZINC PLATED STEEL WITH CLEAR CHROMATE COATING

ELECTRICAL:

RATING: 25A 300V
 WIRE RANGE: 12 - 22 AWG

MECHANICAL:

MAXIMUM TORQUE RATING: 7 IN.-LBS.



10.875	11.311	28	6STR-28-008	2-1546242-8
10.500	10.936	27	6STR-27-008	2-1546242-7
10.125	10.561	26	6STR-26-008	2-1546242-6
9.750	10.186	25	6STR-25-008	2-1546242-5
9.375	9.811	24	6STR-24-008	2-1546242-4
9.000	9.436	23	6STR-23-008	2-1546242-3
8.625	9.061	22	6STR-22-008	2-1546242-2
8.250	8.686	21	6STR-21-008	2-1546242-1
7.875	8.311	20	6STR-20-008	2-1546242-0
7.500	7.936	19	6STR-19-008	1-1546242-9
7.125	7.561	18	6STR-18-008	1-1546242-8
6.750	7.186	17	6STR-17-008	1-1546242-7
6.375	6.811	16	6STR-16-008	1-1546242-6
6.000	6.436	15	6STR-15-008	1-1546242-5
5.625	6.061	14	6STR-14-008	1-1546242-4
5.250	5.686	13	6STR-13-008	1-1546242-3
4.875	5.311	12	6STR-12-008	1-1546242-2
4.500	4.936	11	6STR-11-008	1-1546242-1
4.125	4.561	10	6STR-10-008	1-1546242-0
3.750	4.186	9	6STR-09-008	1546242-9
3.375	3.811	8	6STR-08-008	7-1437654-2
3.000	3.436	7	6STR-07-008	796988-7
2.625	3.061	6	6STR-06-008	1546242-6
2.250	2.686	5	6STR-05-008	9-1546158-4
1.875	2.311	4	6STR-04-008	1546242-4
1.500	1.936	3	6STR-03-008	796988-6
1.125	1.561	2	6STR-02-008	8-1546158-9
DIM B	DIM A	NO. OF POS.	BUCHANAN PART NO.	PART NO.

THIS DRAWING IS A CONTROLLED DOCUMENT.		DWN E. ZANOLINI 04FEB2002	STE TE Connectivity	
DIMENSIONS: INCHES		CHK S. YODER 04FEB02		
TOLERANCES UNLESS OTHERWISE SPECIFIED:		APVD S. YODER 04FEB02	NAME	
0 PLC ± -		PRODUCT SPEC	6STR-XX-008	
1 PLC ± -		APPLICATION SPEC	SIZE CAGE CODE DRAWING NO RESTRICTED TO	
2 PLC ± .01		WEIGHT -	A3 00779 C-7-1437654-2	
3 PLC ± .005		CUSTOMER DRAWING	SCALE NTS	SHEET 1 OF 1
4 PLC ± -				REV D1
ANGLES ± 1/2				
MATERIAL -				
FINISH -				