



Chipsmall Limited consists of a professional team with an average of over 10 year of expertise in the distribution of electronic components. Based in Hongkong, we have already established firm and mutual-benefit business relationships with customers from,Europe,America and south Asia,supplying obsolete and hard-to-find components to meet their specific needs.

With the principle of “Quality Parts,Customers Priority,Honest Operation,and Considerate Service”,our business mainly focus on the distribution of electronic components. Line cards we deal with include Microchip,ALPS,ROHM,Xilinx,Pulse,ON,Everlight and Freescale. Main products comprise IC,Modules,Potentiometer,IC Socket,Relay,Connector.Our parts cover such applications as commercial,industrial, and automotives areas.

We are looking forward to setting up business relationship with you and hope to provide you with the best service and solution. Let us make a better world for our industry!



Contact us

Tel: +86-755-8981 8866 Fax: +86-755-8427 6832

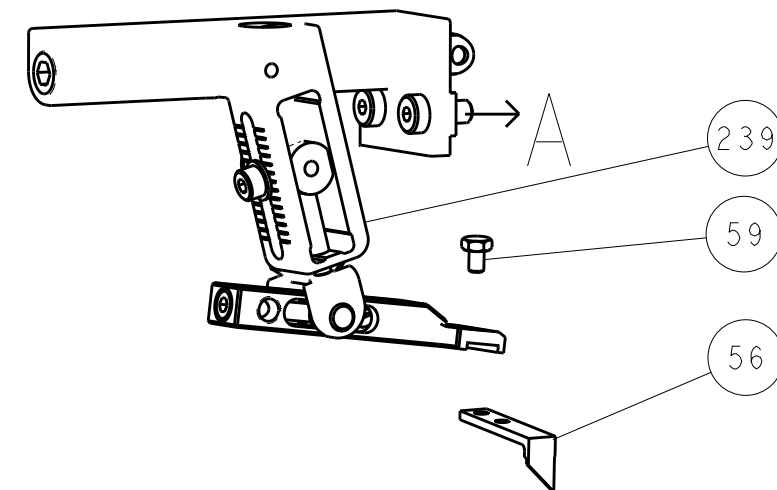
Email & Skype: info@chipsmall.com Web: www.chipsmall.com

Address: A1208, Overseas Decoration Building, #122 Zhenhua RD., Futian, Shenzhen, China

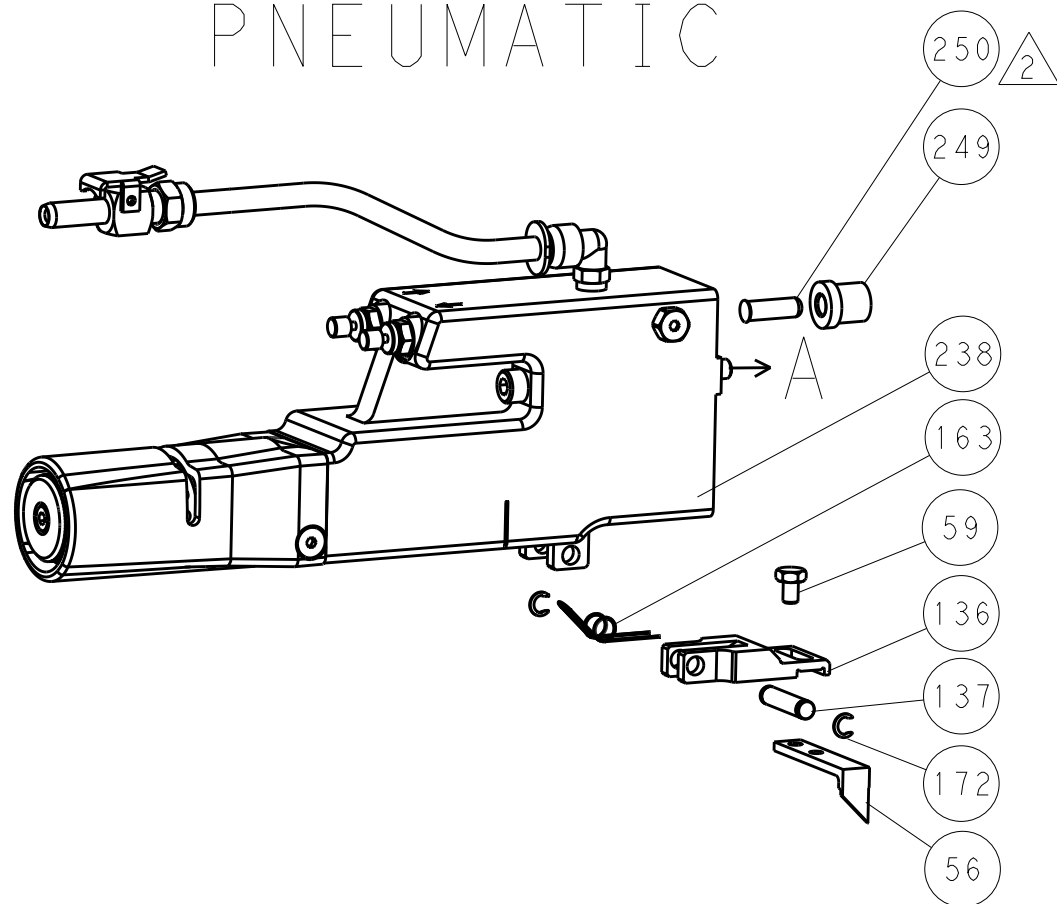


LOC		DIST		REVISONS			
A	66	P	LTR	DESCRIPTION	DATE	DWN	APVD
		-		SEE SHEET 1	-	-	-

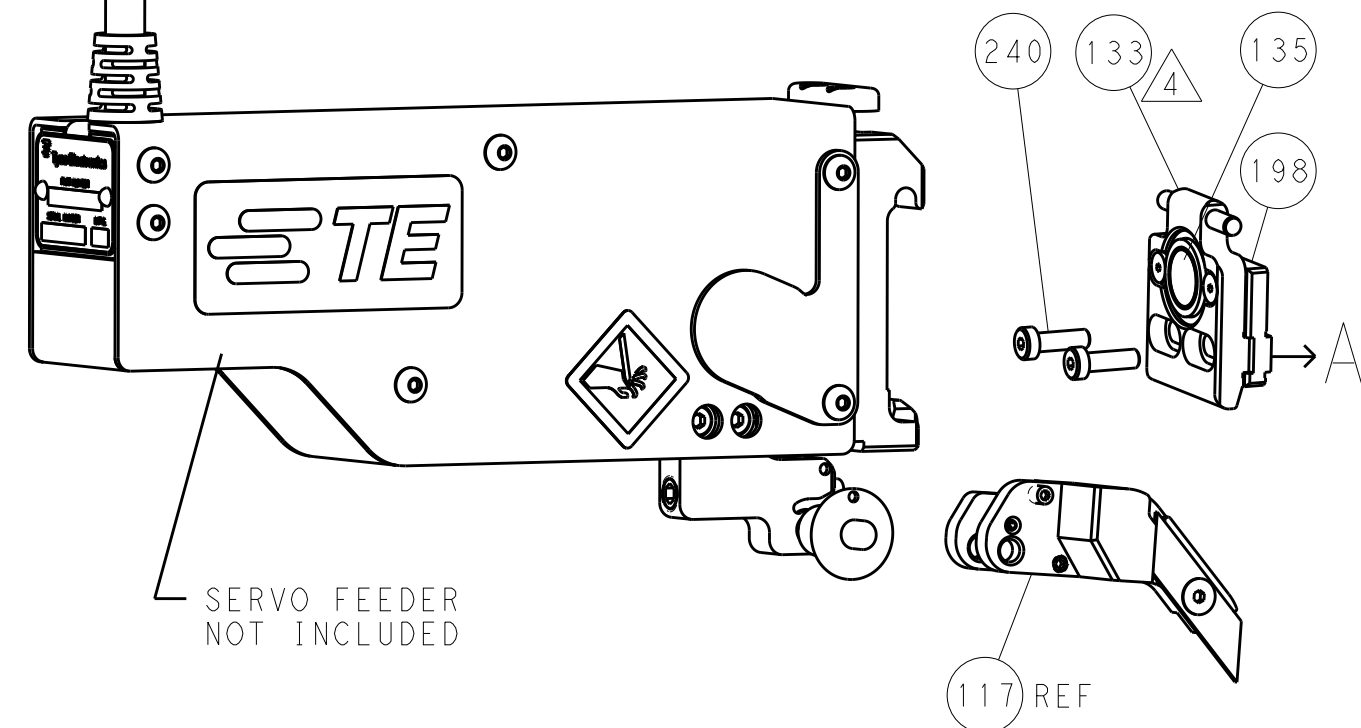
FEED TYPE
MECHANICAL



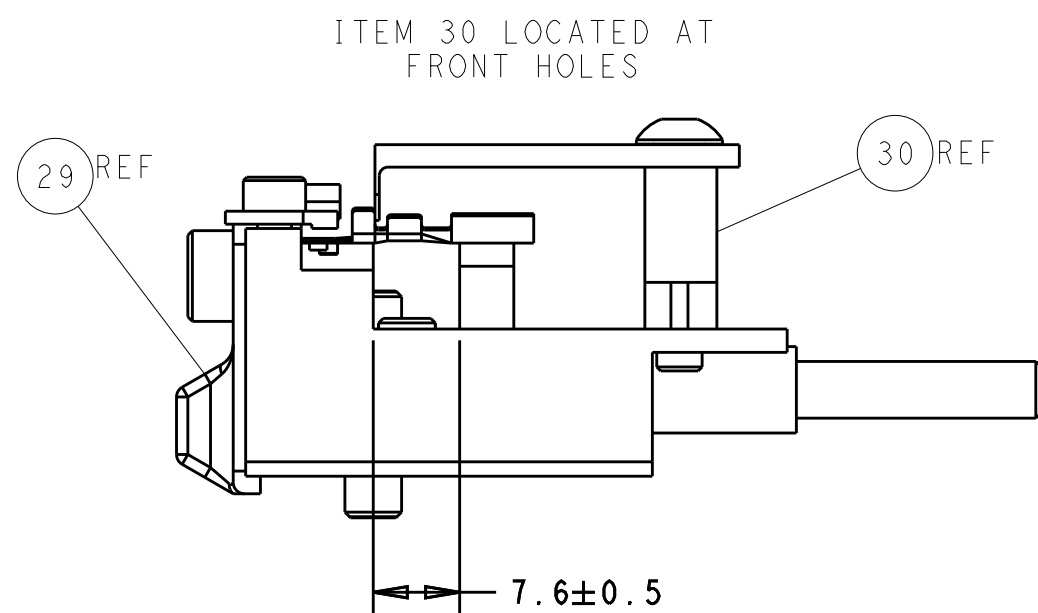
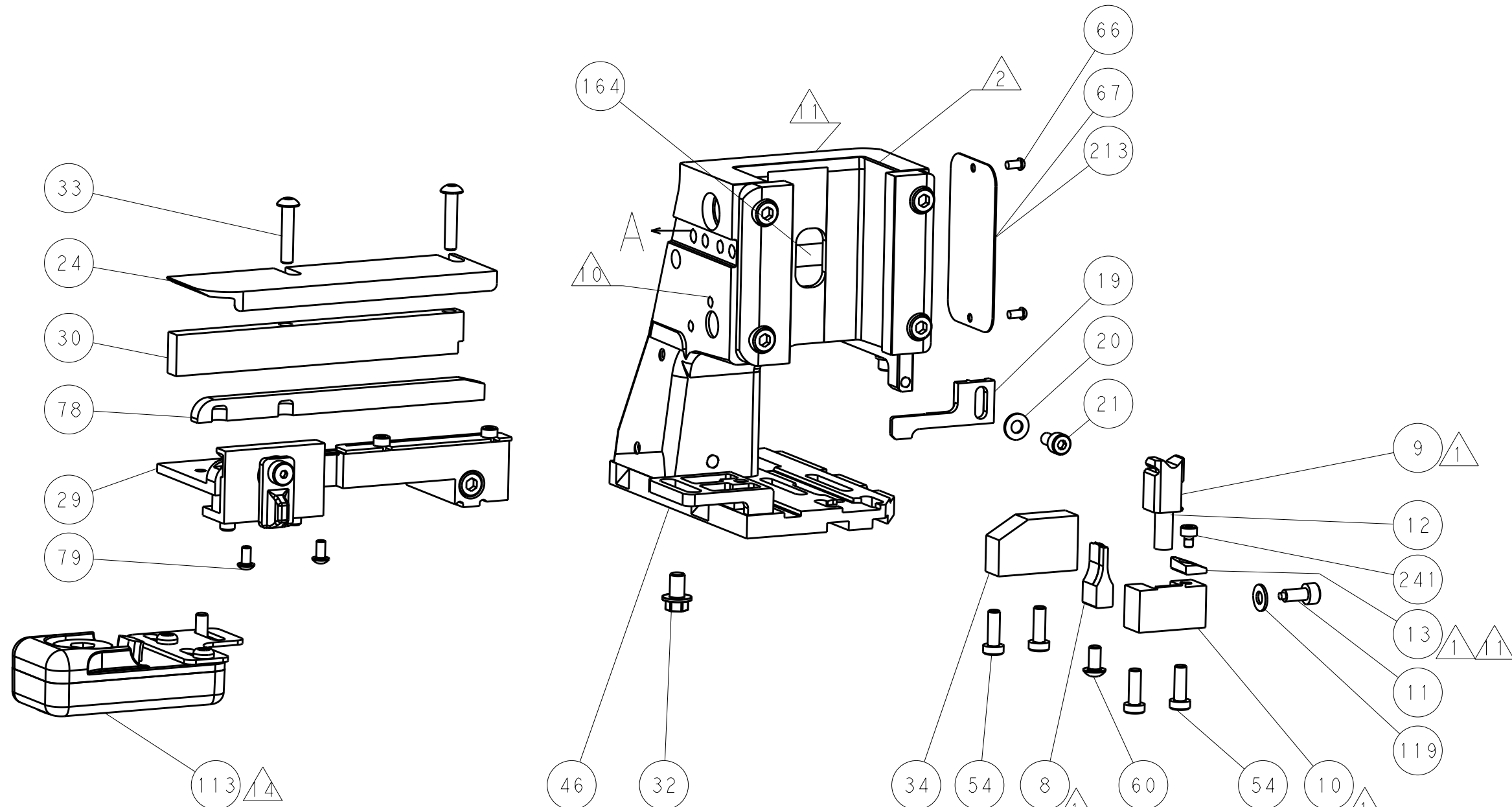
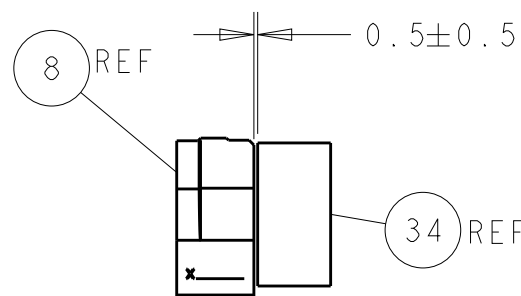
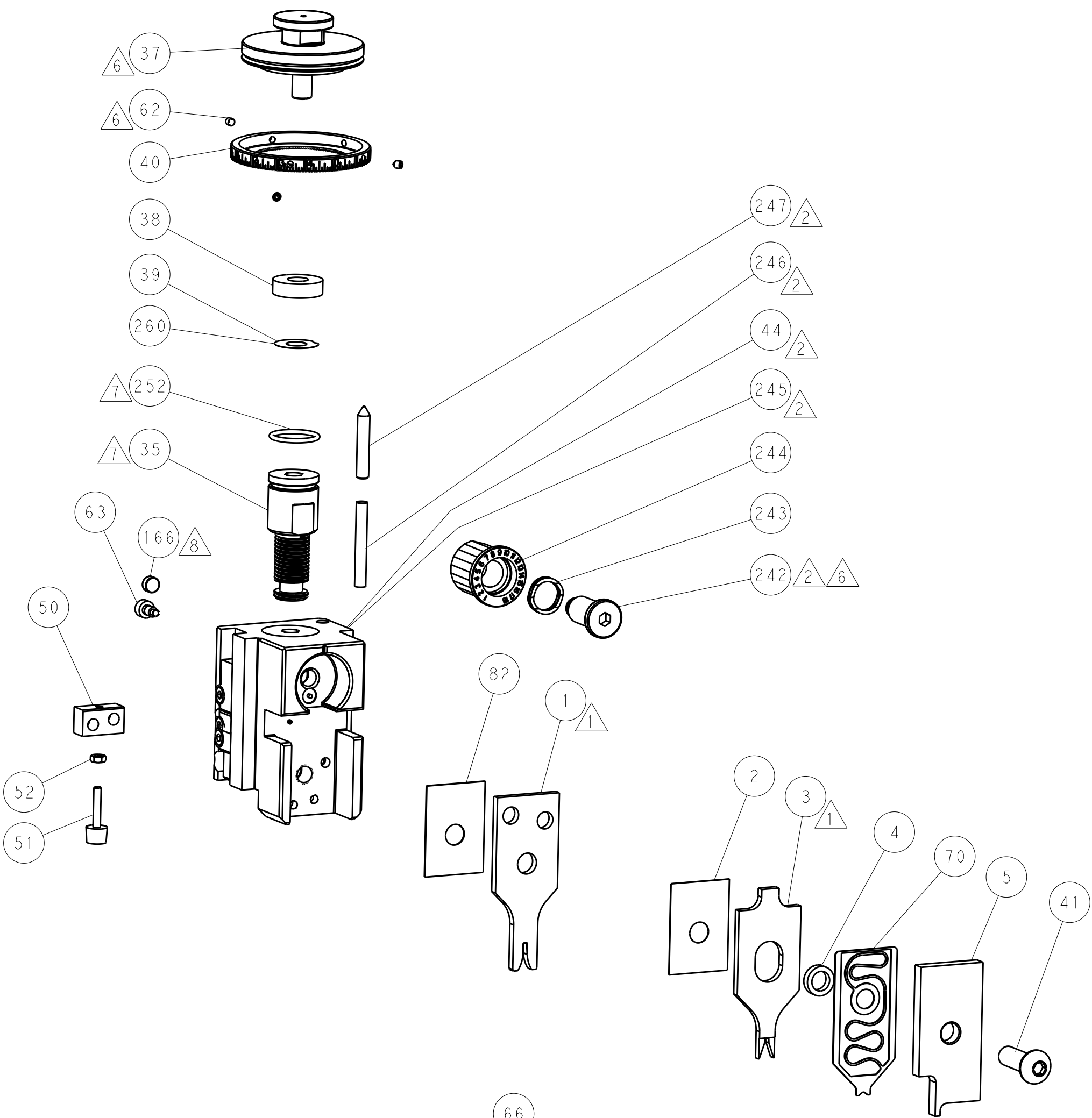
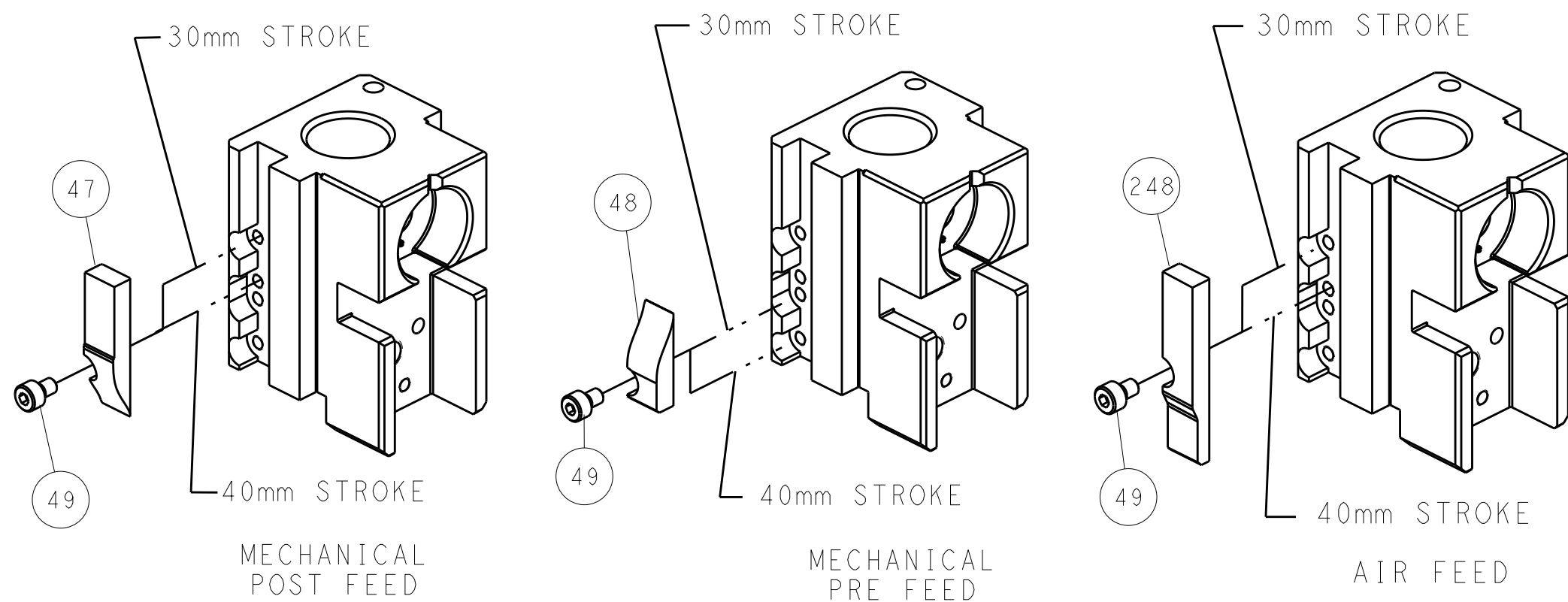
PNEUMATIC



SERVO
LATCH PLATE



CAM POSITIONS



FEED TRACK POSITION
GUIDE BY INSULATION BARREL

ATLANTIC VERSION
Shown on sheets 1 of 4 & 2 of 4
(Pacific version shown on sheets 3 of 4 & 4 of 4)

THIS DRAWING IS UNPUBLISHED. IT IS SUBJECT TO CHANGE AND SHOULD BE CONTACTED FOR THE LATEST REVISION.				DWN: R. KNEPPER 21MAY2013 CHK: G. BAILEY 21MAY2013 APVD: W. CLIFFORD 21MAY2013				TE Connectivity Harrisburg, PA 17105-3608			
DIMENSIONS:				TOLERANCES UNLESS OTHERWISE SPECIFIED:				NAME: Ocean Side Feed Applicator			
mm				0 PLC ±.1 1 PLC ±.1 2 PLC ±.1 3 PLC ±.1 4 PLC ±.1				SIZE: A1			
MATERIAL: -				FINISH: -				CAGE CODE: 00779			
								DRAWING NO: C=2151068			
								RESTRICTED TO: -			
								SCALE: 1:2			
								SHEET: 2 OF 4			
								REV: G			

LOC	DIST	REVISIONS					
		P	LTR	DESCRIPTION	DATE	DWN	APVD
A	66	-	-	SEE SHEET 1	-	-	-

D

C

B

A

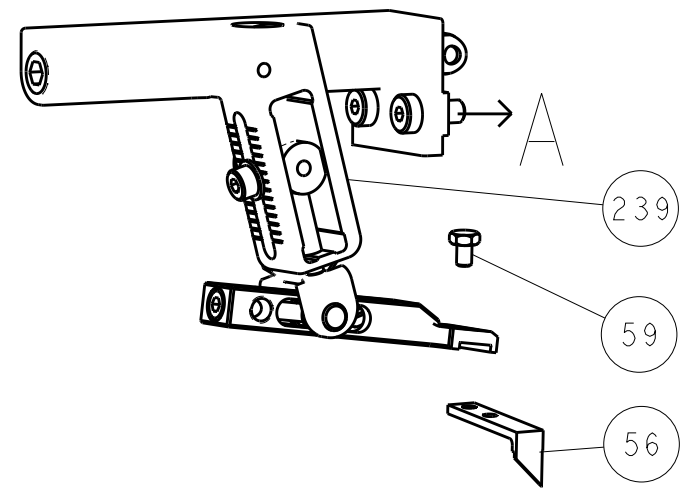
D

C

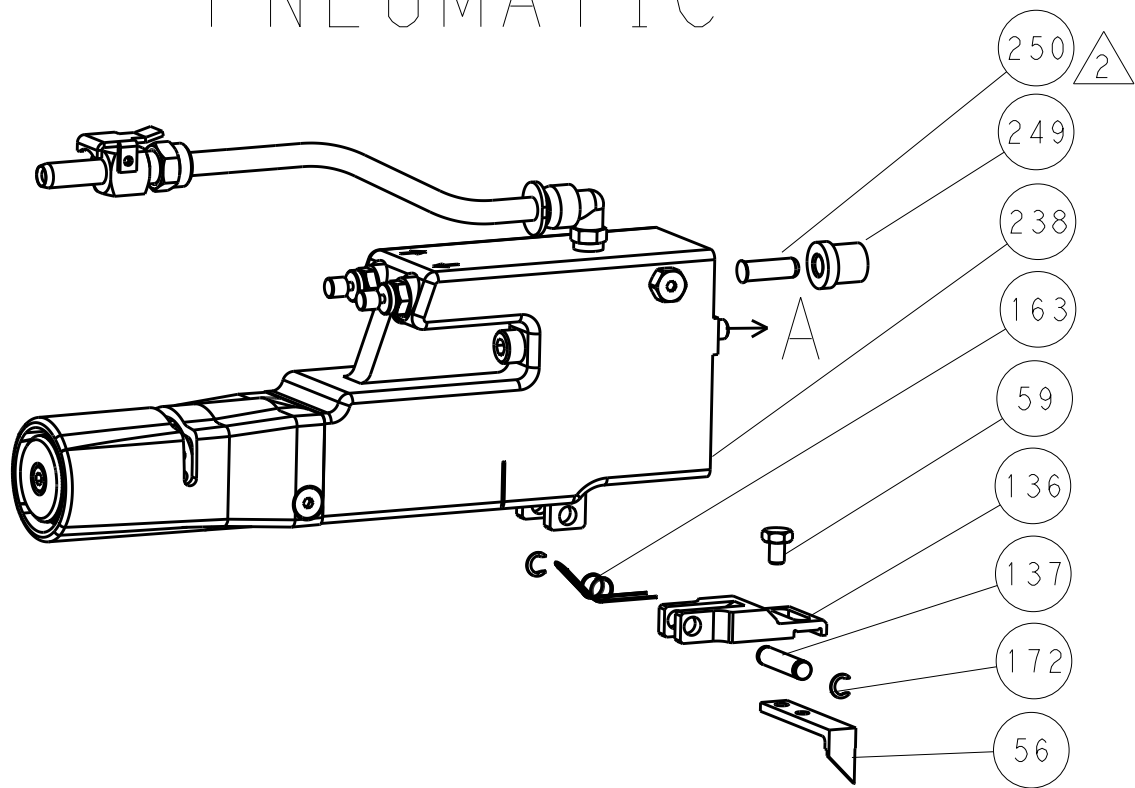
B

A

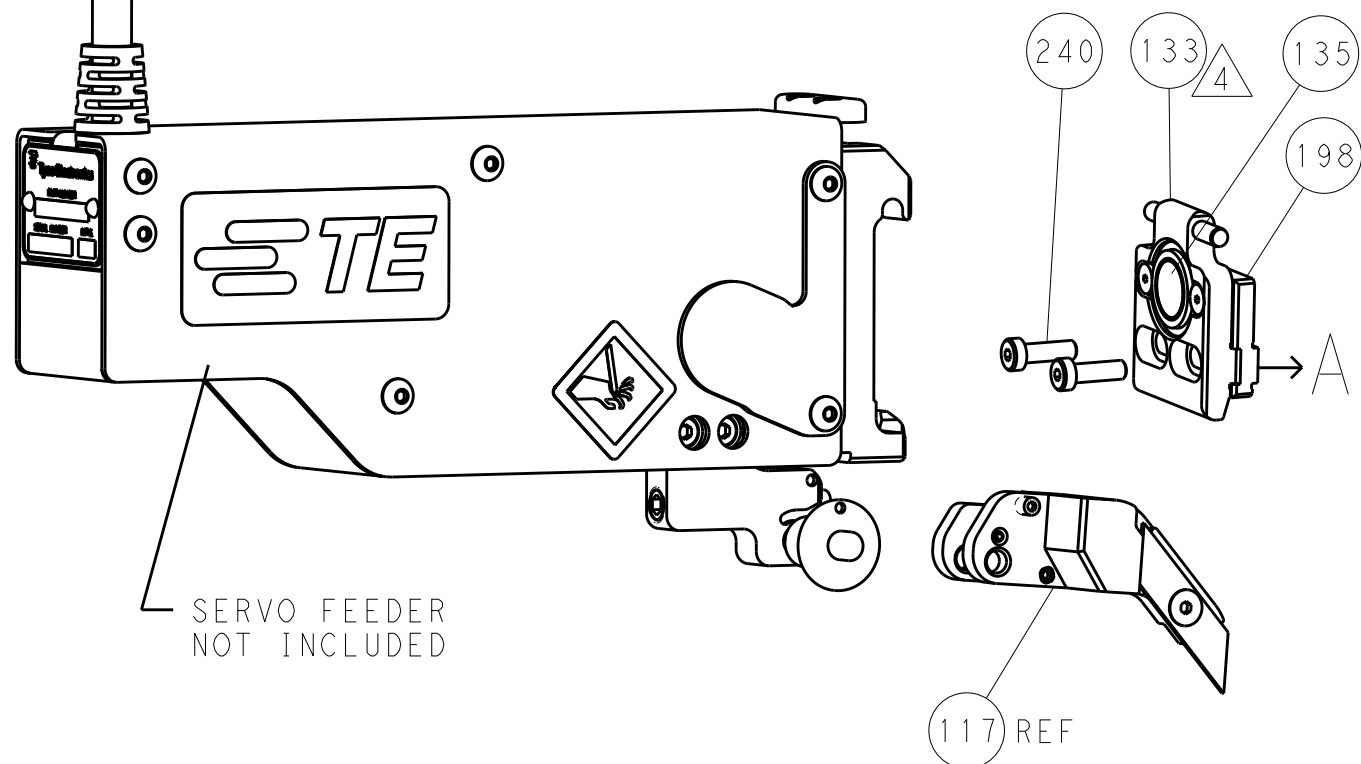
FEED TYPE MECHANICAL



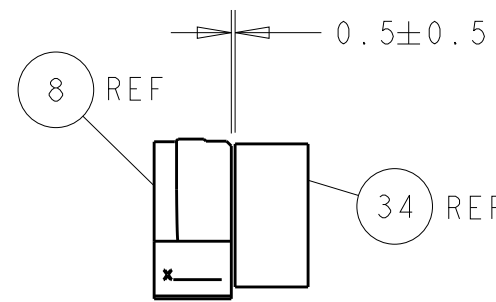
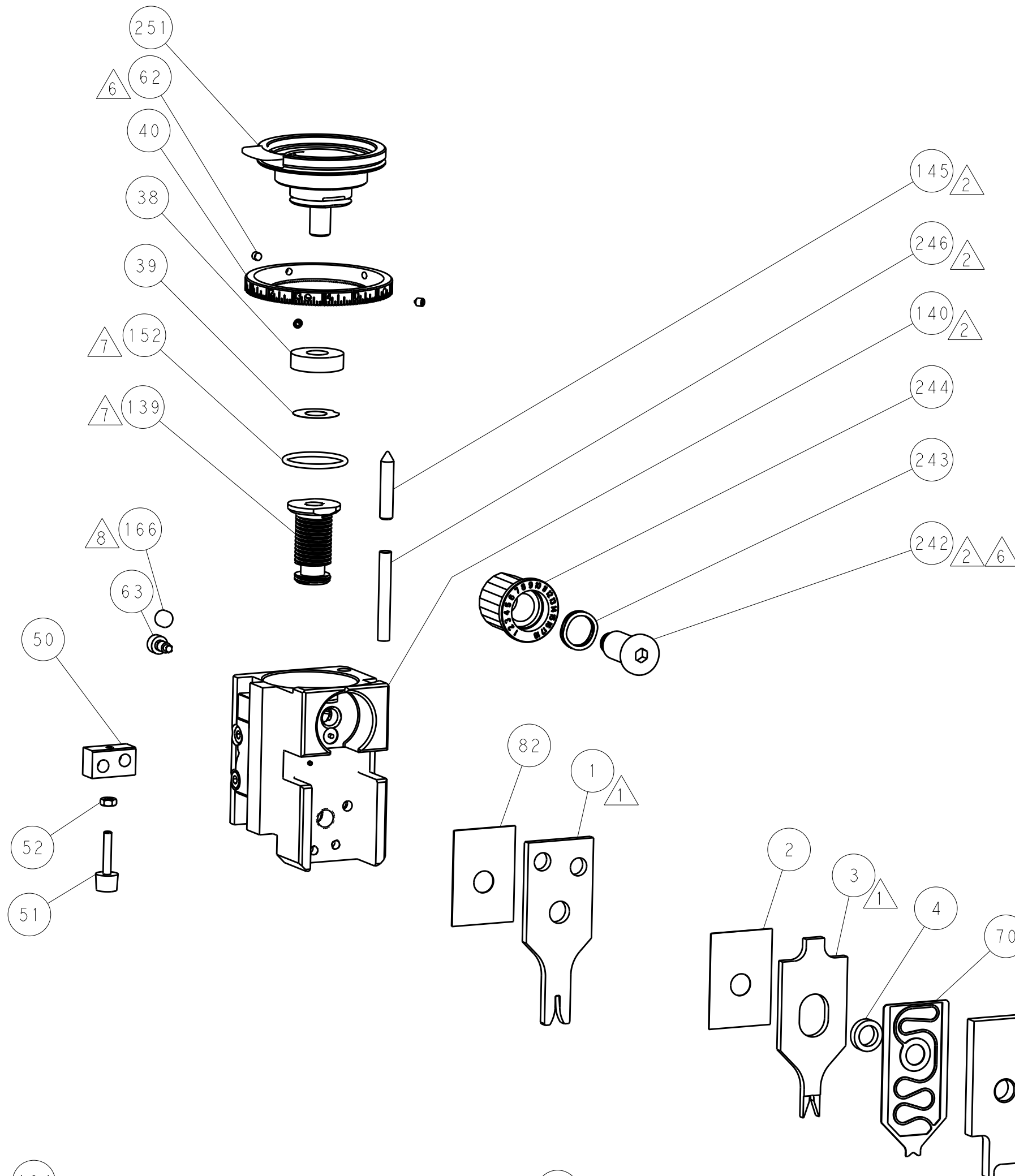
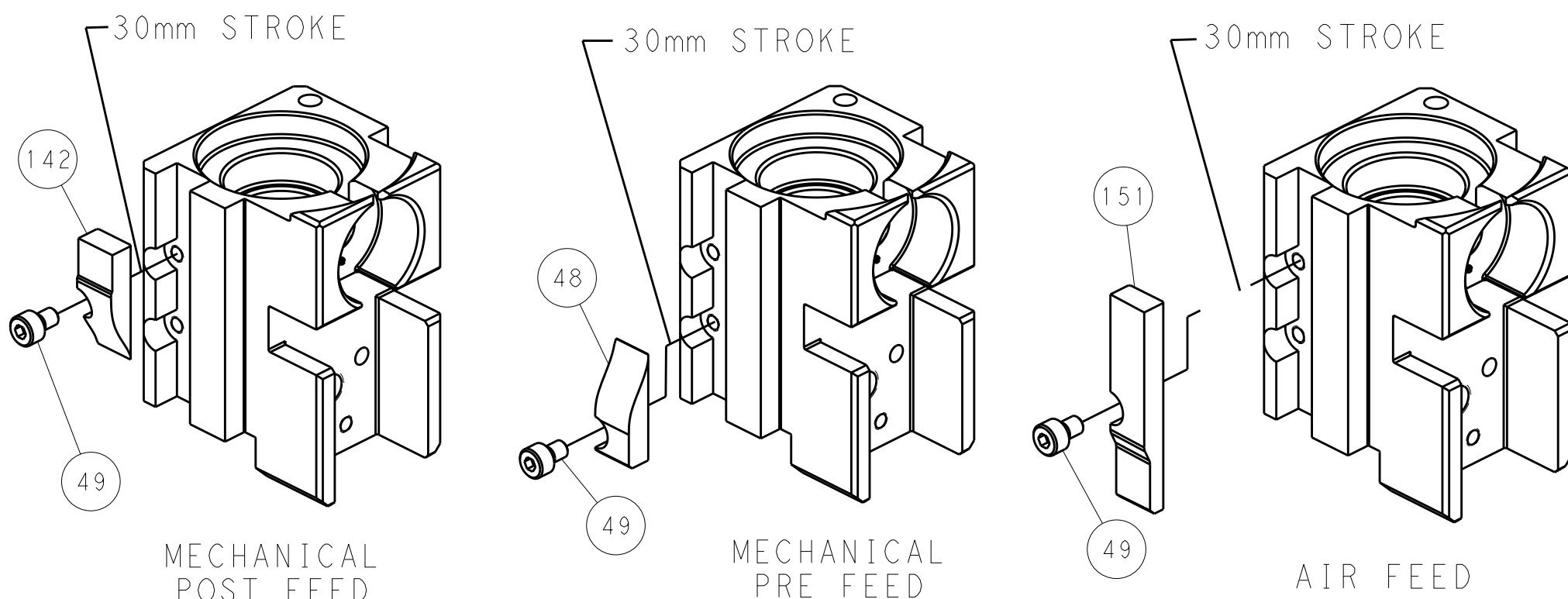
PNEUMATIC



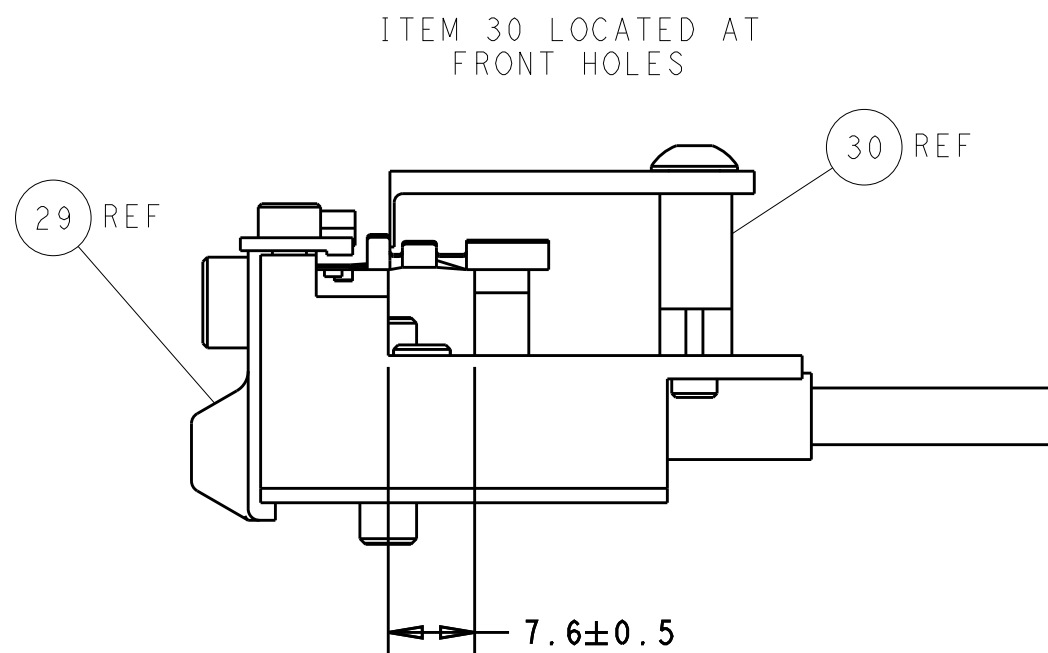
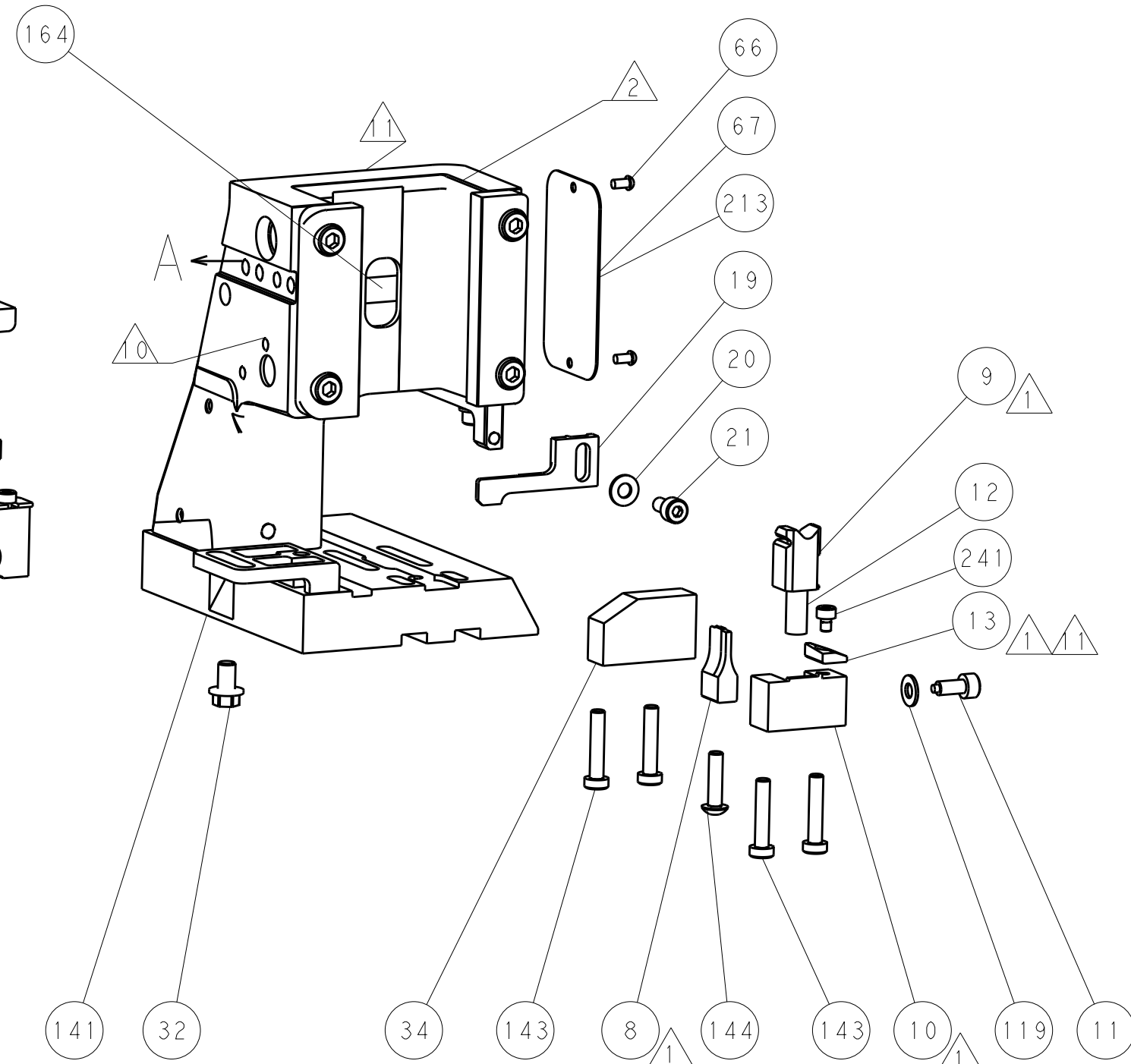
SERVO LATCH PLATE



CAM POSITIONS



TERMINAL SUPPORT LOCATION



FEED TRACK POSITION
GUIDE BY INSULATION BARREL

PACIFIC VERSION
Shown on sheets 3 of 4 & 4 of 4
(Atlantic version shown on sheets 1 of 4 & 2 of 4)

THIS DRAWING IS UNPUBLISHED. IT IS SUBJECT TO CHANGE WITHOUT NOTICE. ANY CHANGES TO THIS DRAWING SHOULD BE CONTACTED FOR THE LATEST VERSION.		DWN R. KNEPPER 21MAY2013	TE Connectivity Harrisburg, PA 17105-3608	
DIMENSIONS: mm		CHK G. BAILEY 21MAY2013	NAME Ocean Side Feed Applicator	
TOLERANCES UNLESS OTHERWISE SPECIFIED:		APVD W. CLIFFORD 21MAY2013	SIZE 00779	
0 PLC ±.1		PRODUCT SPEC	CAGE CODE 2151068	
1 PLC ±.1		APPLICATION SPEC	SCALE 1:2	
2 PLC ±.1		WEIGHT	SHEET 4	
3 PLC ±.1		Customer Accessible Production Drawing	REV G	
4 PLC ±.1				
ANGLES FINISH				