



Chipsmall Limited consists of a professional team with an average of over 10 year of expertise in the distribution of electronic components. Based in Hongkong, we have already established firm and mutual-benefit business relationships with customers from,Europe,America and south Asia,supplying obsolete and hard-to-find components to meet their specific needs.

With the principle of “Quality Parts,Customers Priority,Honest Operation,and Considerate Service”,our business mainly focus on the distribution of electronic components. Line cards we deal with include Microchip,ALPS,ROHM,Xilinx,Pulse,ON,Everlight and Freescale. Main products comprise IC,Modules,Potentiometer,IC Socket,Relay,Connector.Our parts cover such applications as commercial,industrial, and automotives areas.

We are looking forward to setting up business relationship with you and hope to provide you with the best service and solution. Let us make a better world for our industry!



## Contact us

Tel: +86-755-8981 8866 Fax: +86-755-8427 6832

Email & Skype: info@chipsmall.com Web: www.chipsmall.com

Address: A1208, Overseas Decoration Building, #122 Zhenhua RD., Futian, Shenzhen, China



APPLICATOR STYLE CONVERSION CHART with columns for Part Number, Revision, Description, Feed Type, and Part Numbers Required. Includes a diagram of the applicator.

APPLICATOR DATA table with columns for Crimp Size, Wire, Insul, and Crimp Type.

TERMINAL DATA: YAZAKI TERMINAL YAZAKI CRIMP SPECIFICATION. Includes wire strip length, insulation diameter, and terminal application specifications.

WIRE CRIMP HEIGHT mm [INCH] table with columns for Wire Size, Crimp Height, and Crimp Reference Setting.

- RECOMMENDED SPARE PARTS
GREASE BEARING SURFACES LIGHTLY
LUBRICATE DAILY PER THE APPLICATOR INSTRUCTION SHEET SUPPLIED WITH THE APPLICATOR.
APPLICATOR SPECIFIC DATA TO BE ENTERED INTO BLANK MEMORY CHIP AT ASSEMBLY.
ADJUSTMENT OF THE STRIPPER MAY BE REQUIRED WHEN MOVING THE APPLICATOR BETWEEN BENCH AND LEADMAKER APPLICATIONS.
APPLY PART NUMBER 1-23419-5 LOCTITE TO THREADS OF ITEM 62.
GREASE THREADS, GROOVE AND O-RING ON ITEMS 35 & 252.
MAGNET, ITEM 166 MUST BE ORIENTED CORRECTLY IN ORDER TO PROPERLY ACTUATE THE COUNTER.
CRIMP HEIGHT REFERENCE SETTING WAS THE SETTING USED WHEN THE APPLICATOR WAS QUALIFIED AT THE FACTORY.
SPARE FEED CAM STORAGE LOCATION REFER TO INSTRUCTION SHEET FOR ADDITIONAL INFORMATION.
TO CONVERT THE APPLICATOR TO A NON-CARRIER CUTTING STYLE, REMOVE ITEM 13 AND ATTACH TO THE LOCATION ON THE BACK SIDE OF THE HOUSING.
WHEN ASSEMBLING A NON CRIMP HEIGHT ADJUST APPLICATOR (-6) USE SHIMS FROM ITEM 260 TO ACHIEVE A NOMINAL SHIM HEIGHT OF 4.25.

\*WARNING
ON INSTALLATION, SET WIRE DISC, ITEM 40 TO LARGEST WIRE SIZE SETTING. USE OF SETTINGS BELOW MINIMUM REQUIRED CRIMP HEIGHT SETTING WILL CAUSE DAMAGE TO CRIMP TOOLING.

Table with columns for Part No, Description, and Item No, listing various components like Applicator Shim Pack, O-Ring, Push Rod, and Bushing.

ATLANTIC VERSION
Shown on sheets 1 of 4 & 2 of 4
(Pacific version shown on sheets 3 of 4 & 4 of 4)

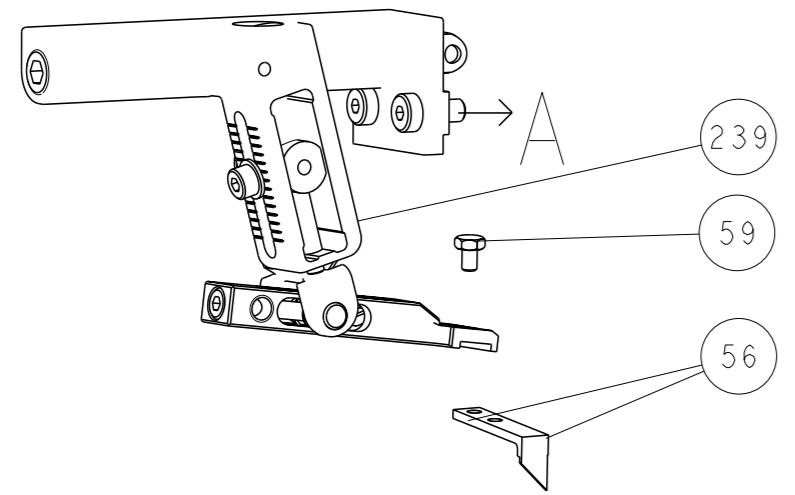
REVISIONS table with columns for P, LTR, A, RELEASD, DATE, and other revision details.

Large table listing various components with columns for Part No, Description, and Item No. Includes items like Feed Cam, Detent Pin, Spring, RAM, Washer, Retainer, SCR, SHCS, Counter, Feed Finger, Memory Chip, Servo Feed Latch, Feed Finger Assembly, Lubricator, Spacer, Crimper, BHSC, Extension Plate, Documentation Package, Tag, Screw, Limiter, Pawl, Nut, Bumper, Reg Down, Tonker, Feed Cam, Post Feed, Applicator Basic Assembly, Ram, Shear, Disc, Applicator Shim Pack, Ram Washer, Precision, FA Head, Bolt, Support, SCR, Hex Head, Strip Guide, Assembly, Strip Guide, Spacer, Crimper, Washer, Stripper, Insert, Spring, Stop, Shear, Shear Holder, Floating Shear, Anvil, Spacer, Depressor, Block, Crimper Spacer, Crimper, Insulation Overlap Premium, Crimper, Wire Premium.

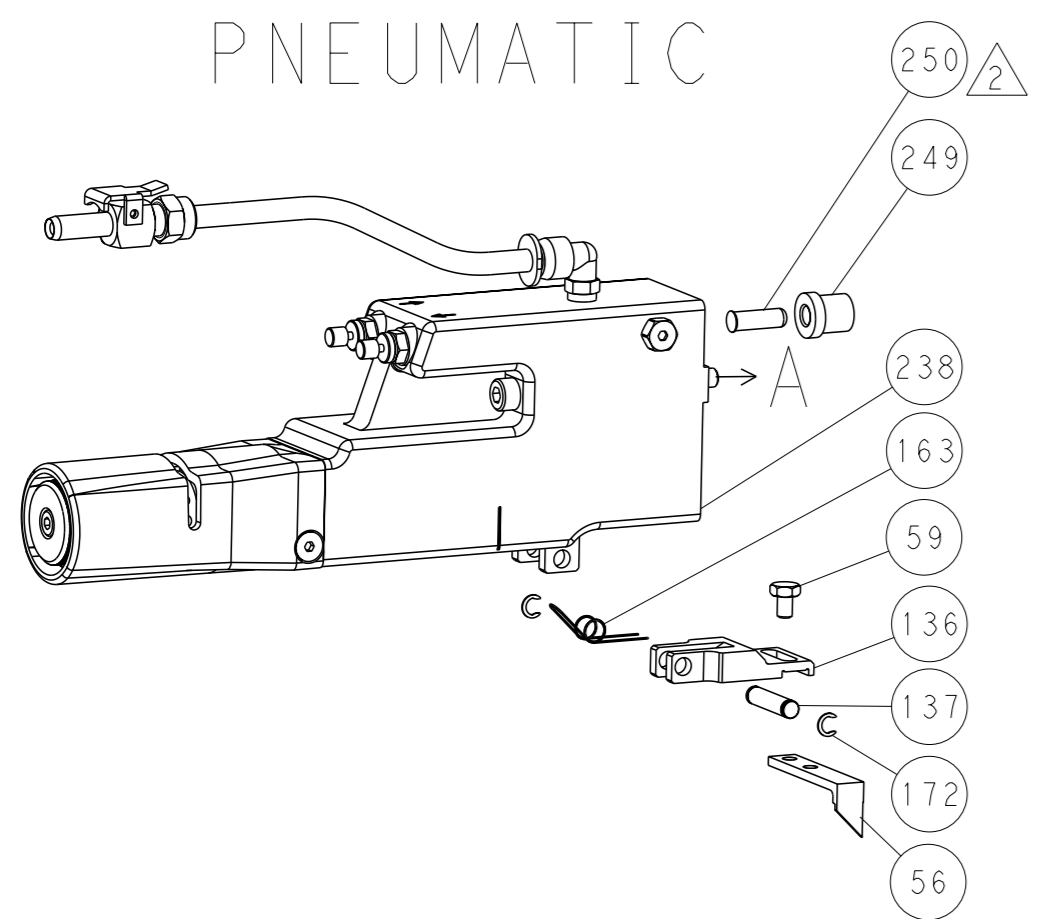
Header information table including dimensions, tolerances, materials, weights, scales, and drawing numbers.

LOC		DIST		REVISONS			
A	66	P	LYR	DESCRIPTION	DATE	OWN	APVD
-	-	-	-	SEE SHEET 1	-	-	-

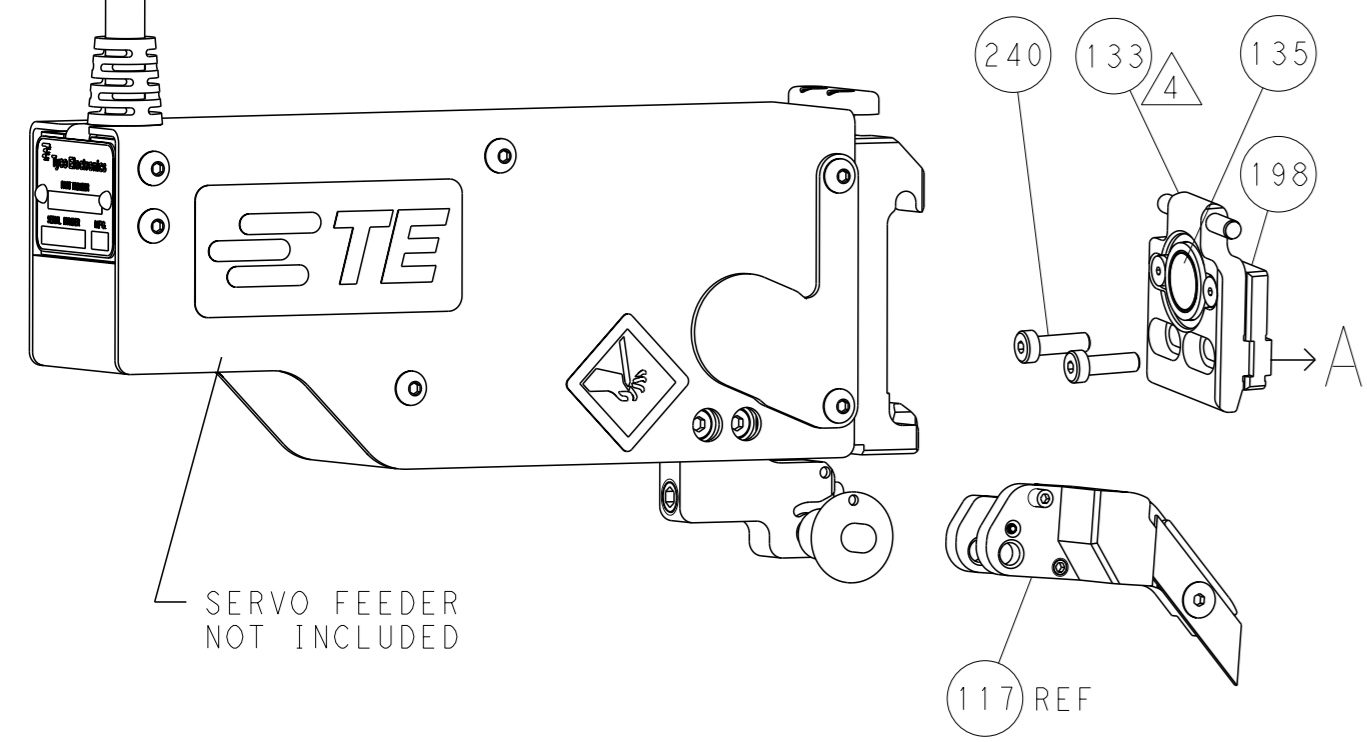
### FEED TYPE MECHANICAL



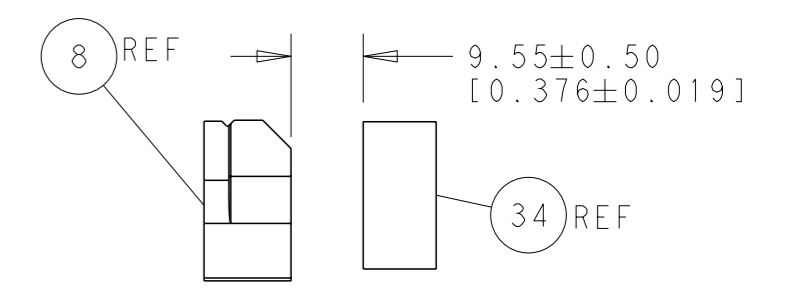
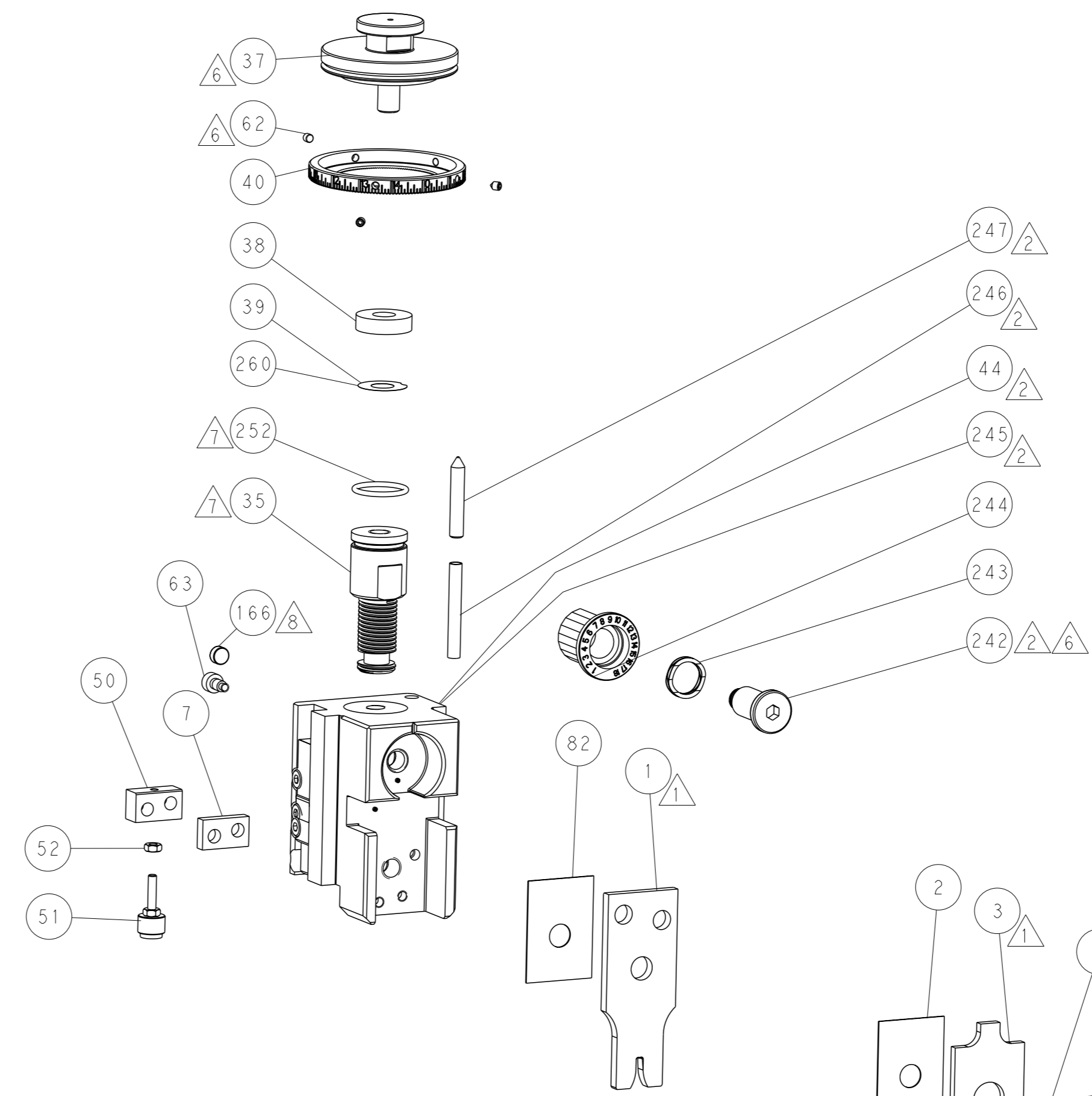
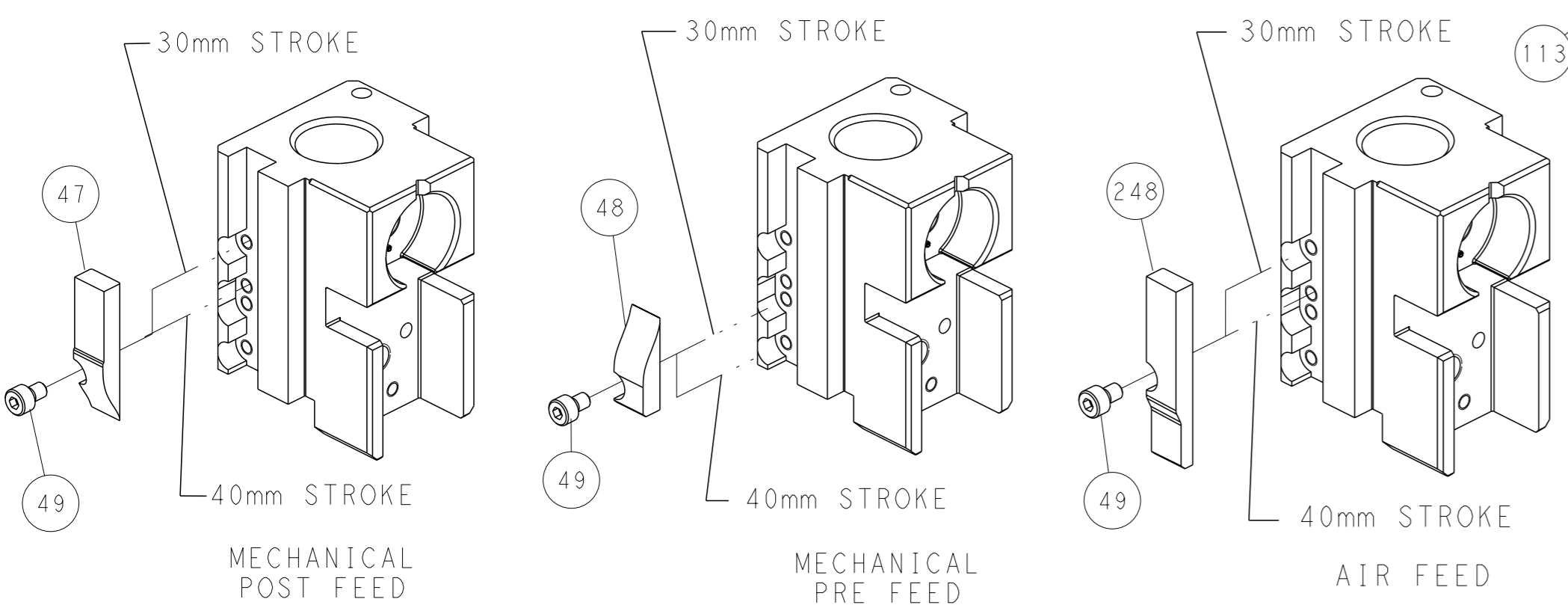
### PNEUMATIC



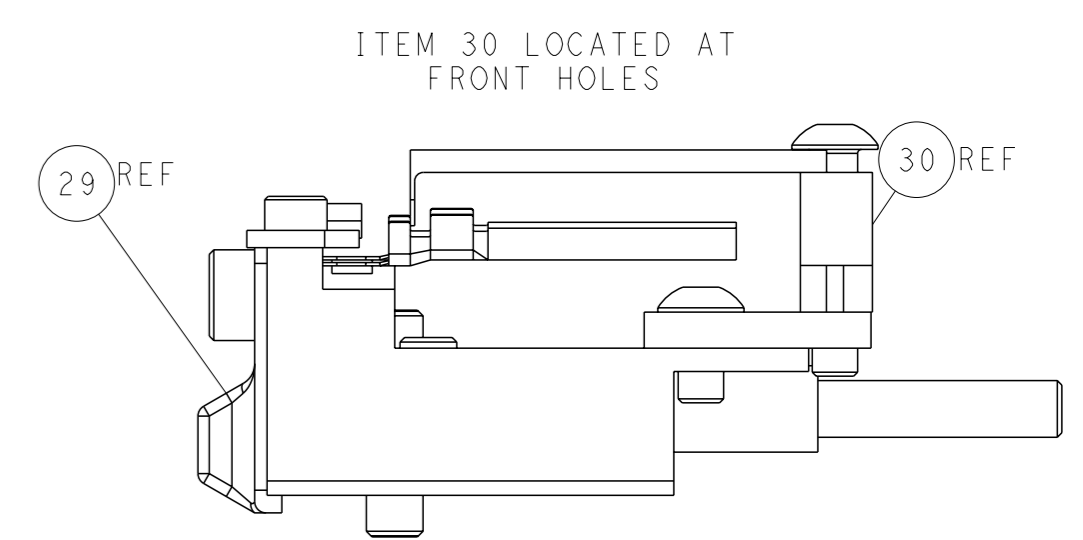
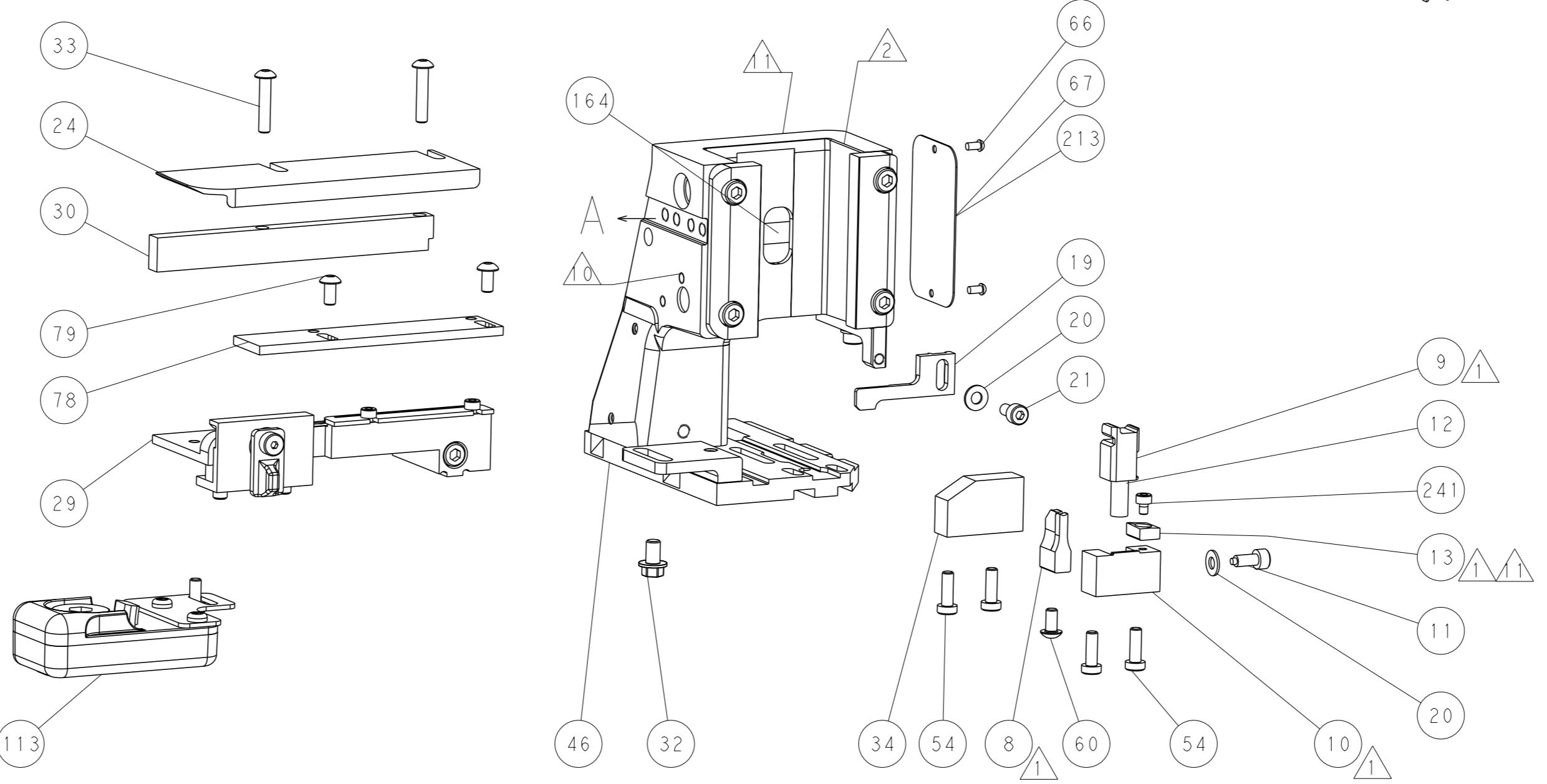
### SERVO LATCH PLATE



### CAM POSITIONS



TERMINAL SUPPORT LOCATION



FEED TRACK POSITION GUIDE BY INSULATION BARREL

**ATLANTIC VERSION**  
 Shown on sheets 1 of 4 & 2 of 4  
 (Pacific version shown on sheets 3 of 4 & 4 of 4)

<small>THIS DRAWING IS UNPUBLISHED. RELEASED FOR PUBLICATION. COPYRIGHT 20 BY TYCO ELECTRONICS CORPORATION. ALL RIGHTS RESERVED.</small>		DWN: H. STAKEM 12MAR2014 CHK: G. BAILEY 12MAR2014 APVD: J. ELBIN 12MAR2014	TE Connectivity Harrisburg, PA 17105-3608
DIMENSIONS: mm TOLERANCES UNLESS OTHERWISE SPECIFIED: 0 PLC ±0.5 1 PLC ±0.13 2 PLC ±0.13 3 PLC ±0.013 4 PLC ±0.001 ANGLES FINISH ±		NAME: Ocean Side Feed Applicator PRODUCT SPEC: APPLICATION SPEC: WEIGHT:	SIZE: A1 CAGE CODE: 00779 DRAWING NO: C=2266689 RESTRICTED TO:
MATERIAL:		CUSTOMER ACCESSIBLE PRODUCTION DRAWING	SCALE: 1:2 SHEET 2 OF 4 REV A

PACIFIC VERSION TERMINATOR INTERFACE ADAPTER	PART NUMBER	REVISION	DESCRIPTION	FEED TYPE
	2-2266689-1	A	FINE CRIMP HEIGHT ADJUST	MECHANICAL
	2-2266689-2	A	FINE CRIMP HEIGHT ADJUST	PNEUMATIC
	2-2266689-5	A	FINE CRIMP HEIGHT ADJUST	SERVO LATCH PLATE
	2-2266689-7	A	FINE CRIMP HEIGHT ADJUST	NONE
	7-2266689-7	A	CRIMP TOOLING KIT	-

APPLICATOR DATA		
CRIMP	SIZE	TYPE
WIRE	2.55 mm [.100]	F
INSUL	3.30 mm [.130]	OV
APPLICATOR INSTRUCTIONS 408-10389		

TERMINAL DATA: YAZAKI TERMINAL YAZAKI CRIMP SPECIFICATION	
TERMINAL NAME: TERMINAL, BULLET	
WIRE STRIP LENGTH	INSULATION DIAMETER RANGE
5.50-6.00 mm [.217-.236 IN]	$\varnothing$ 2.20-2.80 mm [.087-.110 IN]
TERMINAL APPLICATION SPECIFICATION 7113-2378 Rev WA1672	-
TERMINALS APPLIED	
TE TERMINAL	YAZAKI TERMINAL
2113666-1	7113-2328

WIRE SIZE	CRIMP HEIGHT mm [INCH]	CRIMP HEIGHT REFERENCE SETTING
2.00mm2 FLYR-A	1.55+/-0.05 [.061+/-0.002]	9.0
1.50mm2 FLYR-A	1.50+/-0.05 [.059+/-0.002]	9.4



RECOMMENDED SPARE PARTS

GREASE BEARING SURFACES LIGHTLY

3. LUBRICATE DAILY PER THE APPLICATOR INSTRUCTION SHEET SUPPLIED WITH THE APPLICATOR.

APPLICATOR SPECIFIC DATA TO BE ENTERED INTO BLANK MEMORY CHIP AT ASSEMBLY. SEE BELOW FOR PART NUMBER:  
 MECHANICAL FEED WITH "SMART APPLICATOR" CONVERSION: 8-2266689-4  
 PNEUMATIC FEED WITH "SMART APPLICATOR" CONVERSION: 8-2266689-4  
 SERVO FEED WITH "FINE CRIMP HEIGHT ADJUST": 8-2266689-5

5. ADJUSTMENT OF THE STRIPPER MAY BE REQUIRED WHEN MOVING THE APPLICATOR BETWEEN BENCH AND LEADMAKER APPLICATIONS.

APPLY PART NUMBER 1-23419-5 LOCTITE TO THREADS OF ITEM 62.  
 APPLY PART NUMBER 2-23419-6 LOCTITE TO THREADS OF ITEM 242.

GREASE THREADS, GROOVE AND O-RING ON ITEMS 139 & 152.

MAGNET MUST BE ORIENTED CORRECTLY IN ORDER TO PROPERLY ACTUATE THE COUNTER.

CRIMP HEIGHT REFERENCE SETTING WAS THE SETTING USED WHEN THE APPLICATOR WAS QUALIFIED AT THE FACTORY. ADJUSTMENT MAY BE NECESSARY WHEN RUNNING APPLICATOR IN THE FIELD.

SPARE FEED CAM STORAGE LOCATION REFER TO INSTRUCTION SHEET FOR ADDITIONAL INFORMATION.

TO CONVERT THE APPLICATOR TO A NON-CARRIER CUTTING STYLE, REMOVE ITEM 13 AND ATTACH TO THE LOCATION ON BACK SIDE OF THE HOUSING. REFER TO INSTRUCTION SHEET FOR ADDITIONAL INFORMATION.

**\*WARNING**  
 ON INSTALLATION, SET WIRE DISC, ITEM 40 TO LARGEST WIRE SIZE SETTING. USE OF SETTINGS BELOW MINIMUM REQUIRED CRIMP HEIGHT SETTING WILL CAUSE DAMAGE TO CRIMP TOOLING.

CONVERT TO	PART NUMBERS REQUIRED	ITEM NO
PNEUMATIC FEED	2119950-1 1338685-1 5-18022-5 2119641-2 2119799-1	251
SERVO LATCH PLATE	2119951-1 - 8-2266689-5 1901094-3 -	250
SMART APPLICATOR	2161326-1 - 8-2266689-4 -	-
MECHANICAL FEED	2119949-1 1338685-1 5-18022-5 2119653-2	-
SERVO LATCH PLATE	2119951-1 - 8-2266689-5 1901094-3 -	-
SMART APPLICATOR	2161326-1 - 8-2266689-4 -	-
MECHANICAL FEED	2119949-1 1338685-1 5-18022-5 2119653-2	-
PNEUMATIC FEED	2119950-1 1338685-1 5-18022-5 2119641-2 2119799-1	2063440-1
-	-	-
-	-	-

**PACIFIC VERSION**  
 Shown on sheets 3 of 4 & 4 of 4  
 (Atlantic version shown on sheets 1 of 4 & 2 of 4)

SET UP GAUGE		LOC	DIST	REVISIONS		
NO	DATE	BY	APP'D	DESCRIPTION	DATE	OWN
2119599-1	A	66	-	SEE SHEET 1	-	-

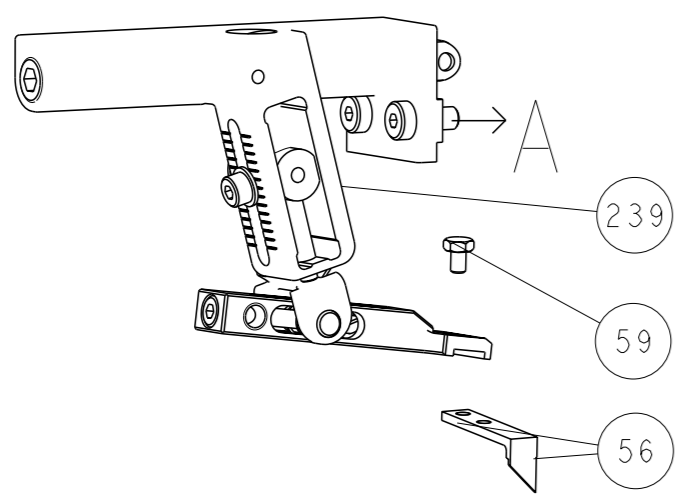
P	QTY	DESCRIPTION	DATE	OWN	APP'D		
-	-	-	-	-	-		
-	1	2079988-1	1-22279-3		249		
-	1	1-22279-3			246		
-	1	2119082-6			244		
-	1	2079764-1			243		
-	1	2119083-1			242		
-	1	7-18023-7			241		
-	2	2168400-6			240		
-	-	2119580-1			239		
-	-	2063440-1			238		
-	-	2119740-2			213		
-	-	1901094-3			198		
-	-	21045-3			172		
-	1	994969-1			166		
-	REF	994970-2			164		
-	-	240638-1			163		
-	1	8-21084-1			152		
-	-	2119641-2			151		
-	1	2119798-2			145		
-	1	2079383-8			144		
-	4	2168400-5			143		
-	-	2119653-2			142		
-	1	1-2119656-0			141		
-	1	2119650-1			140		
-	1	2119092-2			139		
-	-	3-23627-7			137		
-	-	2119799-1			136		
-	-	SEE NOTE 4			135		
-	-	1633743-1			133		
-	-	2119944-1			117		
-	1	2119955-1			113		
-	1	455888-4			82		
-	2	2079383-4			79		
-	1	1803096-1			78		
-	1	2119956-1			71		
-	1	2119740-1			67		
-	2	2168078-1			66		
-	1	2119793-1			63		
-	3	992763-5			62		
-	-	5-18022-5			59		
-	-	1338685-1			56		
-	2	2168083-8			53		
-	1	5018030-1			52		
-	1	811242-5			51		
-	1	690753-2			50		
-	-	18023-9			49		
-	-	2119652-1			48		
-	1	2079383-7			41		
-	1	2119645-1			40		
-	1	2119957-1			39		
-	1	1-2119644-2			38		
-	1	1752356-1			34		
-	2	2079383-5			33		
-	1	2161328-1			32		
-	1	1-1320908-5			30		
-	1	2119959-1			29		
-	1	455888-3			28		
-	1	1320928-6			24		
-	1	2168083-2			21		
-	2	1-18028-2			20		
-	1	2119533-1			19		
-	1	2119806-1			13		
-	1	3-22280-3			12		
-	1	1-356885-4			11		
-	1	2119805-1			10		
-	1	454276-5			9		
-	1	4-1803056-6			8		
-	1	2-240641-0			7		
-	-	-			6		
-	1	2119757-8			5		
-	1	2-238011-1			4		
-	1	4-2119785-4			3		
-	1	455888-4			2		
-	1	3-456407-5			1		
-77	-27	-25	-22	-21	PART NO	DESCRIPTION	ITEM NO

DIMENSIONS:		TOLERANCES UNLESS OTHERWISE SPECIFIED:		OWN	CHK	APP'D
mm	0 PLC ±0.5	1 PLC ±0.5	2 PLC ±0.3	12MAR2014	12MAR2014	12MAR2014
	3 PLC ±0.013	4 PLC ±0.0001	ANGLES ±°			
MATERIAL	FINISH	WEIGHT	SCALE	SHEET	OF	REV
-	-	-	1:2	3	4	A

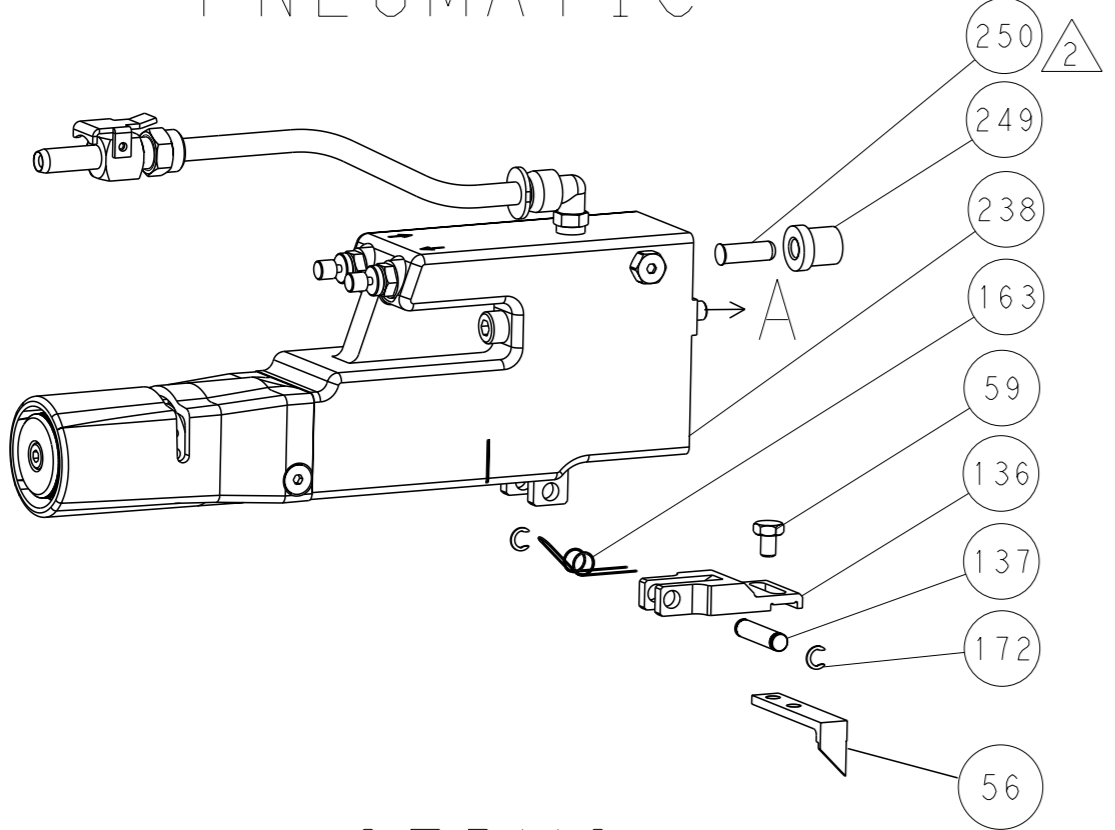
TE Connectivity Harrisburg, PA 17105-3608	
Ocean Side Feed Applicator	
SIZE	CAGE CODE
A1	00779
Customer Accessible Production Drawing	

LOC		DIST		REVISIONS			
A	66	P	LYR	DESCRIPTION	DATE	OWN	APVD
		-		SEE SHEET 1			

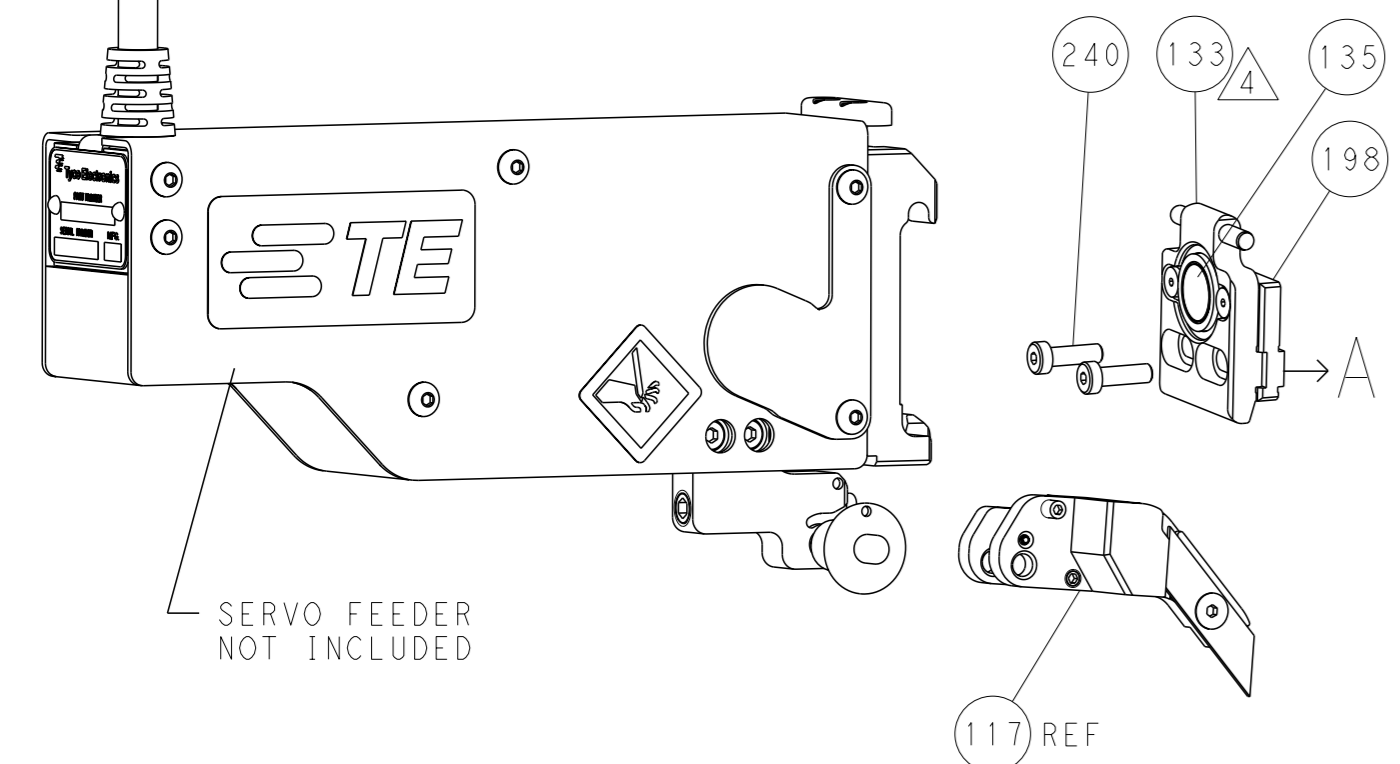
# FEED TYPE MECHANICAL



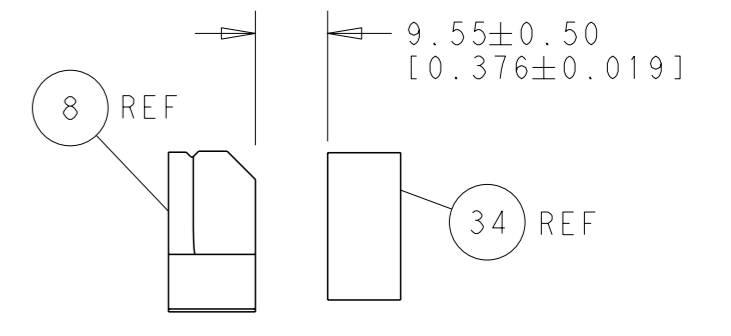
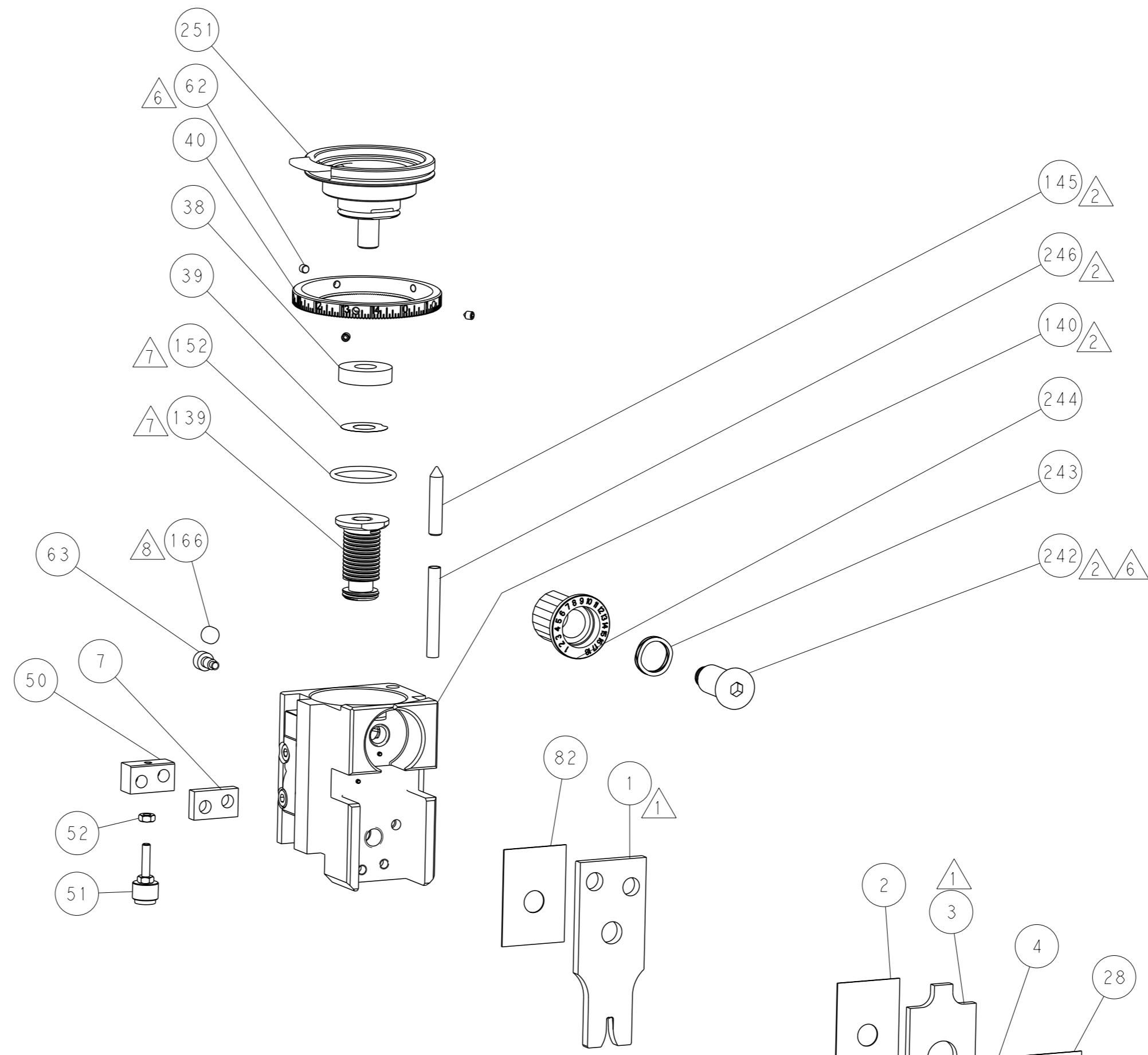
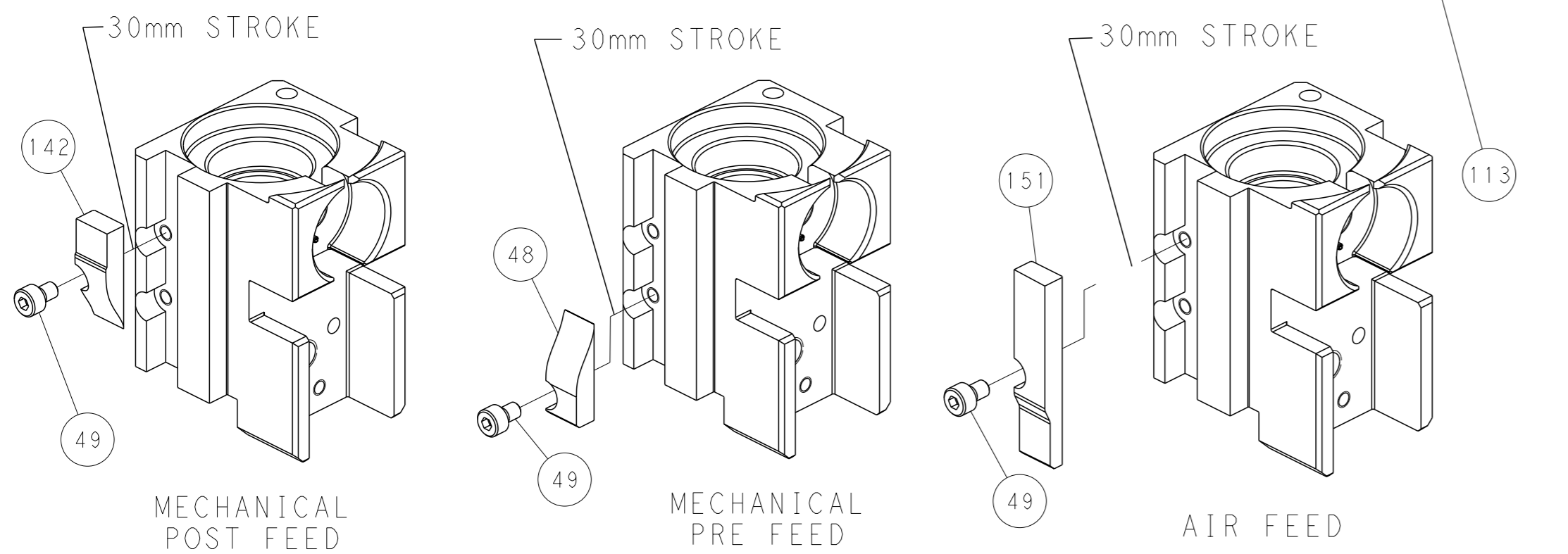
# PNEUMATIC



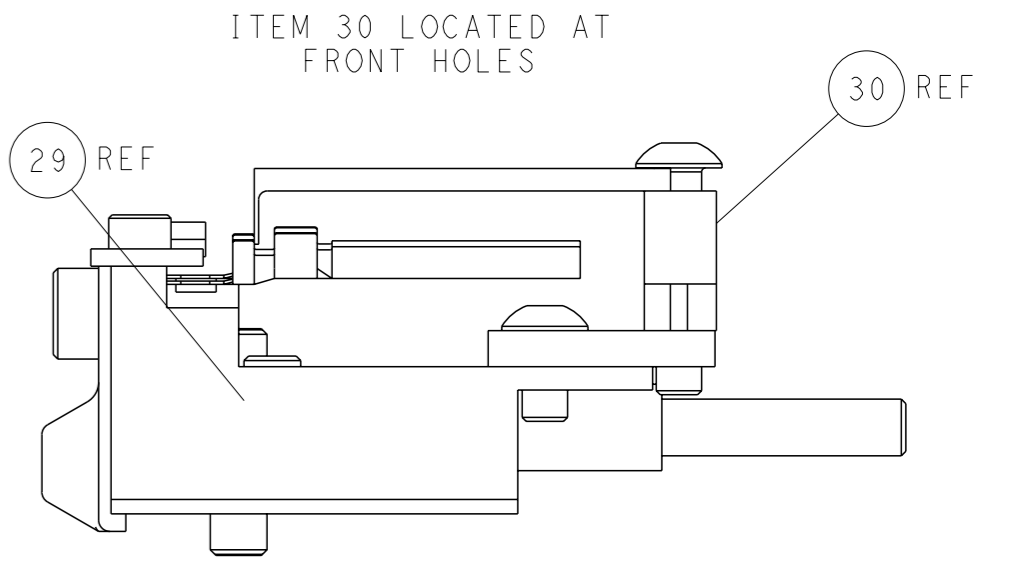
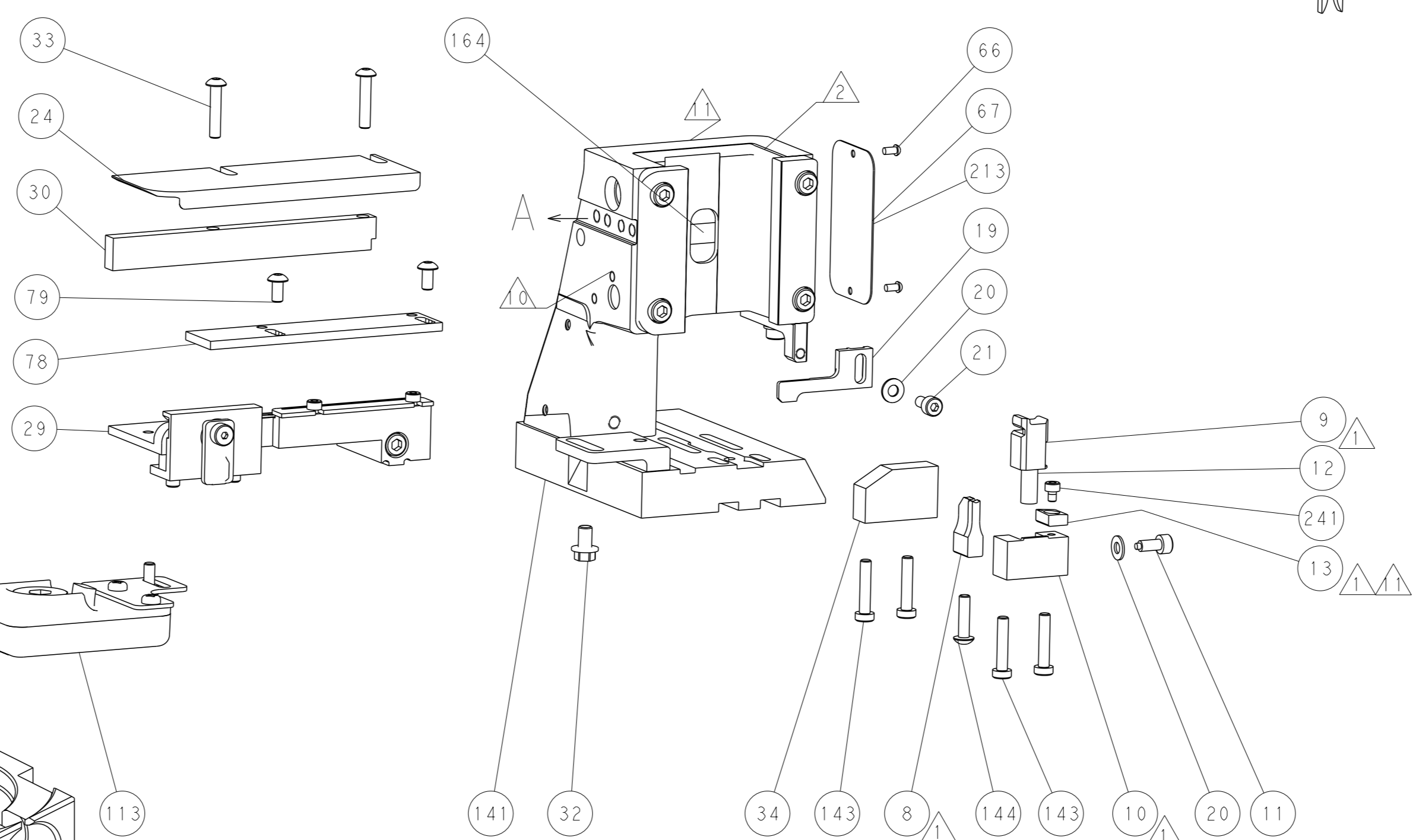
# SERVO LATCH PLATE



# CAM POSITIONS



TERMINAL SUPPORT LOCATION



FEED TRACK POSITION  
GUIDE BY INSULATION BARREL

**PACIFIC VERSION**  
 Shown on sheets 3 of 4 & 4 of 4  
 (Atlantic version shown on sheets 1 of 4 & 2 of 4)

<small>THIS DRAWING IS A CONTROLLED DOCUMENT FOR TYCO ELECTRONICS CORPORATION. IT IS SUBJECT TO CHANGE AND THE CONTROLLER ENGINEERING ORGANIZATION SHOULD BE CONTACTED FOR THE LATEST REVISION.</small>		DWN: H. STAKEM 12MAR2014 CHK: G. BAILEY 12MAR2014 APVD: T. ELBIN 12MAR2014	NAME: Ocean Side Feed Applicator SIZE: A1 CAGE CODE: 00779 DRAWING NO: C-2266689	RESTRICTED TO: - SCALE: 1:2 SHEET: 4 of 4 REV: A
DIMENSIONS: mm TOLERANCES UNLESS OTHERWISE SPECIFIED: 0 PLC ±0.5 1 PLC ±0.13 2 PLC ±0.13 3 PLC ±0.013 4 PLC ±0.001 ANGLES FINISH: -	MATERIAL: - FINISH: -	WEIGHT: - PRODUCT SPEC: - APPLICATION SPEC: -	CUSTOMER ACCESSIBLE PRODUCTION DRAWING	