



Chipsmall Limited consists of a professional team with an average of over 10 year of expertise in the distribution of electronic components. Based in Hongkong, we have already established firm and mutual-benefit business relationships with customers from,Europe,America and south Asia,supplying obsolete and hard-to-find components to meet their specific needs.

With the principle of "Quality Parts,Customers Priority,Honest Operation,and Considerate Service",our business mainly focus on the distribution of electronic components. Line cards we deal with include Microchip,ALPS,ROHM,Xilinx,Pulse,ON,Everlight and Freescale. Main products comprise IC,Modules,Potentiometer,IC Socket,Relay,Connector.Our parts cover such applications as commercial,industrial, and automotives areas.

We are looking forward to setting up business relationship with you and hope to provide you with the best service and solution. Let us make a better world for our industry!



## Contact us

Tel: +86-755-8981 8866 Fax: +86-755-8427 6832

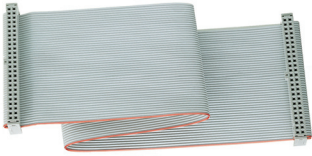
Email & Skype: info@chipsmall.com Web: www.chipsmall.com

Address: A1208, Overseas Decoration Building, #122 Zhenhua RD., Futian, Shenzhen, China



## ACCESSORIES

### CABLE ASSEMBLIES



Several standard cable assemblies to connect controllers to our I/O module mounting racks may be ordered. The 72-CHH cable has a 50-pin header connector on each end to mate with those on mounting racks. The 72-CHE cable has a 50-pin header connector on one end and a 50-pin edge card connector on the other.

### TEST MODULES



Modules for use in system set up and testing may be ordered. Modules 70M-ISW1 and 70G-ISW1 simulates an input; 70M-OSW1 switch simulates an output.

### ORDERING INFORMATION

Part Number	Description
<b>Cable Assemblies</b>	
72-CHH-1	Ribbon cable assembly, header to header, 1 foot long
72-CHH-2	Ribbon cable assembly, header to header, 2 feet long
72-CHH-4	Ribbon cable assembly, header to header, 4 feet long
72-CHH-6	Ribbon cable assembly, header to header, 6 feet long
72-CHE-2	Ribbon cable assembly, header to edge card, 2 feet long
72-CHE-4	Ribbon cable assembly, header to edge card, 4 feet long
72-CHE-6	Ribbon cable assembly, header to edge card, 6 feet long
<b>Test Modules</b>	
70L-ISW	Input module test switch, OpenLine® package
70G-ISW1	Input module test switch, G5 package
70M-ISW1	Input module test switch, mini package
70M-OSW1	Output module test switch, 3 amp, mini package
<b>Fuses</b>	
70-FUSE-3AC	Fuse, 3.15A, 5x20mm, used on all AC Digital Output Modules
70-FUSE-3DC	Fuse, 3.15A, 5x20mm, used on all Solid State OpenLine® DC Digital Output Modules
70-FUSE-H	Fuse holder for Output Modules, used on all Digital Output Modules

### FUSE KITS

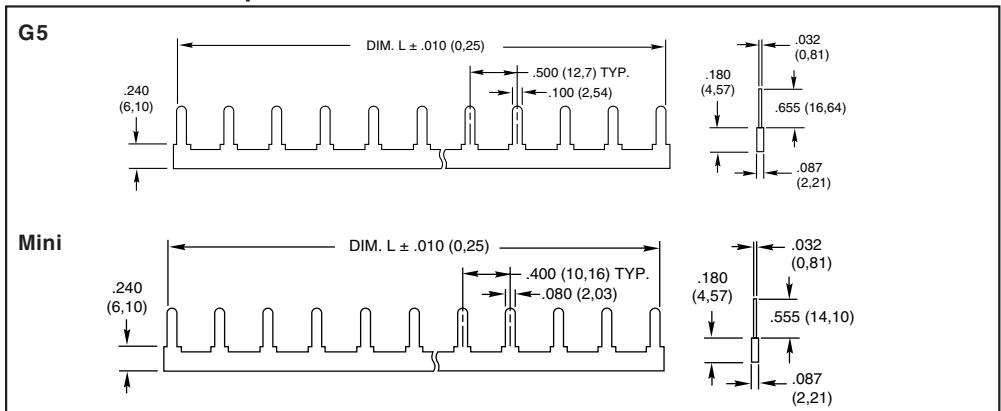
Fuse and fuse holder Replacement kits of 10 can be ordered directly from Grayhill.

**Controller Boards, I/O Modules, Module Racks, and Accessories are available through Authorized Grayhill Industrial Distributors.** For prices and discounts, contact your local sales office, an authorized Industrial Distributor, or Grayhill.

### SYSTEM 50 JUMPER BARS

Grayhill jumper bars are available for applications that require common terminals to be bussed together on digital I/O mounting racks. Jumper bars are available for both our Mini and G5 racks. Grayhill jumper bars are made from .032" thick tin-plated brass. The jumper bars are insulated with a molded sleeve for excellent dielectric properties.

### DIMENSIONS: Jumper Bars



### ORDERING INFORMATION: Jumper Bars for Grayhill G5 and Mini Series I/O Racks

Part Number	Description	Dimension "L" in. (mm)	Use on Grayhill I/O Rack
70G-JUMP8	8 position jumper for G5 I/O racks	3.60 (91,44)	70GRCK8-HL, 70GRCK16-HL, 70GRCM32-HL, 70GRCP32-HL, 70GRCK16I, 70GRCK16T
70G-JUMP12	12 position jumper for G5 I/O racks	5.60 (142,24)	70GRCK24-HL
70M-JUMP6	6 position jumper for Mini I/O racks	2.08 (52,83)	70MRCQ24-HL
70M-JUMP8	8 position jumper for Mini I/O racks	2.88 (73,15)	70MRCK8-HL, 70MRCK16-HL, 70MRCK24-HL