



Chipsmall Limited consists of a professional team with an average of over 10 year of expertise in the distribution of electronic components. Based in Hongkong, we have already established firm and mutual-benefit business relationships with customers from,Europe,America and south Asia,supplying obsolete and hard-to-find components to meet their specific needs.

With the principle of “Quality Parts,Customers Priority,Honest Operation,and Considerate Service”,our business mainly focus on the distribution of electronic components. Line cards we deal with include Microchip,ALPS,ROHM,Xilinx,Pulse,ON,Everlight and Freescale. Main products comprise IC,Modules,Potentiometer,IC Socket,Relay,Connector.Our parts cover such applications as commercial,industrial, and automotives areas.

We are looking forward to setting up business relationship with you and hope to provide you with the best service and solution. Let us make a better world for our industry!



## Contact us

Tel: +86-755-8981 8866 Fax: +86-755-8427 6832

Email & Skype: info@chipsmall.com Web: www.chipsmall.com

Address: A1208, Overseas Decoration Building, #122 Zhenhua RD., Futian, Shenzhen, China



# 700/800-Series

## ROTARY SWITCHES

The 700 and 800-Series are single pole multi-position, general purpose rotary switches. These switches feature a nylon actuator in a metal clad construction along with a self-cleaning silver plated contact design. The 700 and 800-Series are typically used in applications requiring multi-position speed controls, such as electric fans.



### Product Highlights:

- ♦ Ratings to 3A 250VAC, 6A 125VAC
- ♦ Up to 8 available detent positions
- ♦ Double “D” bushing mount
- ♦ Sturdy Metal Clad construction

### Typical Applications:

- ♦ Small Appliance
- ♦ Industrial Control
- ♦ Marine



### Dielectric Strength

UL/CSA: 1000V (minimum)

### Base Material

Steel/Zinc Plate

### Insulation Resistance

100 Megohms (minimum)

### Actuator Material

Brass/Nickel Plate

**700-1A** - **BL**

<sup>1</sup>  
Base Part Number

<sup>2</sup>  
Knob Color

**1 BASE PART NUMBER: SERIES/POLES/CIRCUITRY<sup>1</sup>/RATING/TERMINATION<sup>2</sup>**

**2A 250VAC; 4A 125VAC; 1A 125V**

Solder Lugs	.250 Tabs	Position 1	Position 2	Position 3	Position 4	
-	<b>700-A</b>	OFF	ON	ON	ON	
<b>700-1</b>	<b>700-1A</b>	OFF	ON	-	-	
<b>700-2</b>	<b>700-2A</b>	OFF	ON	ON	ON	repeating 8 positions
<b>700-3</b>	<b>700-3A</b>	OFF	ON	ON	OFF	
<b>700-4</b>	<b>700-4A</b>	OFF	ON	ON	-	
<b>700-5</b>	<b>700-5A</b>	OFF	ON	OFF	-	
<b>700-6</b>	<b>700-6A</b>	-	ON	OFF	ON	
<b>700-7</b>	<b>700-7A</b>	-	ON	ON	-	
<b>700-8</b>	<b>700-8A</b>	-	ON	ON	ON	
<b>700-9</b>	<b>700-9A</b>	OFF	ON	OFF	ON	

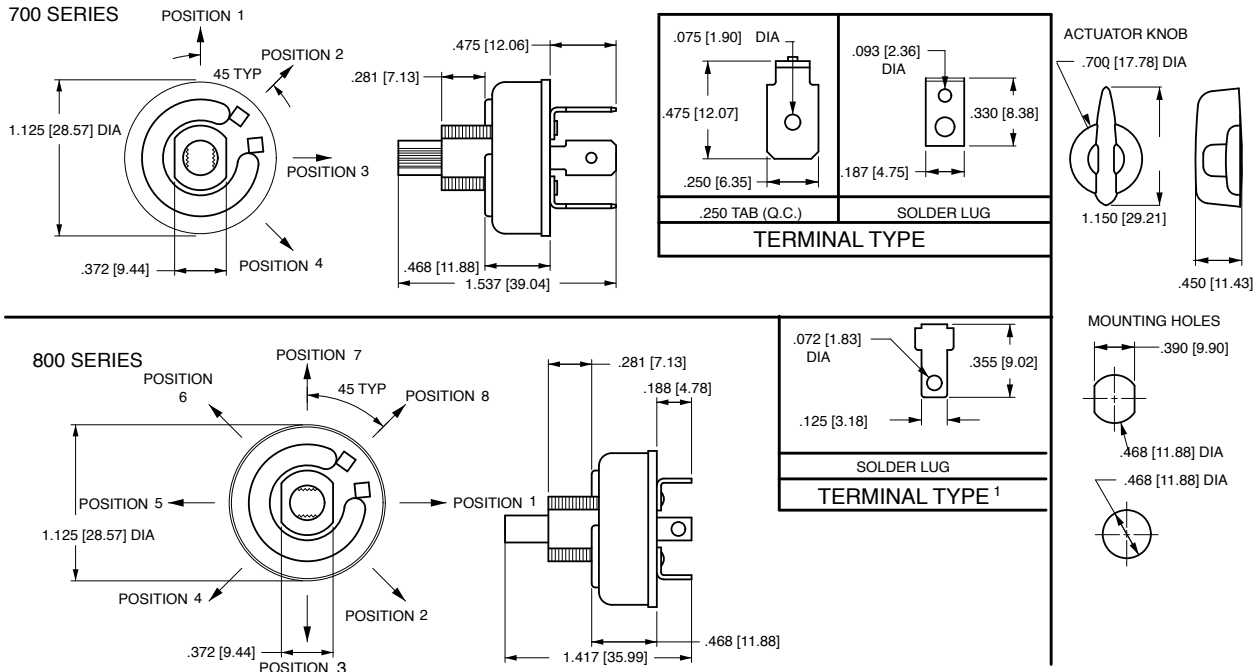
**3A 250VAC; 6A 125VAC**

Switch Positions	OFF Position
<b>800-2</b> 2 positions	<b>800-A</b> 1st position
<b>800-3</b> 3 positions	<b>800-A2</b> 2nd position
<b>800-4</b> 4 positions	<b>800-A3</b> 3rd position
<b>800-5</b> 5 positions	<b>800-A4</b> 4th position
<b>800-6</b> 6 positions	<b>800-A5</b> 5th position
<b>800-7</b> 7 positions	<b>800-A6</b> 6th position
<b>800-8</b> 8 positions	<b>800-A7</b> 7th position
	<b>800-A8</b> 8th position

**2 ACTUATOR COLOR**  
**BL** Black

**Notes:**

- 1 700-2 and 700-2A feature 8 detent positions.
- 2 800-Series terminal is a combination solder lug and quick connect.

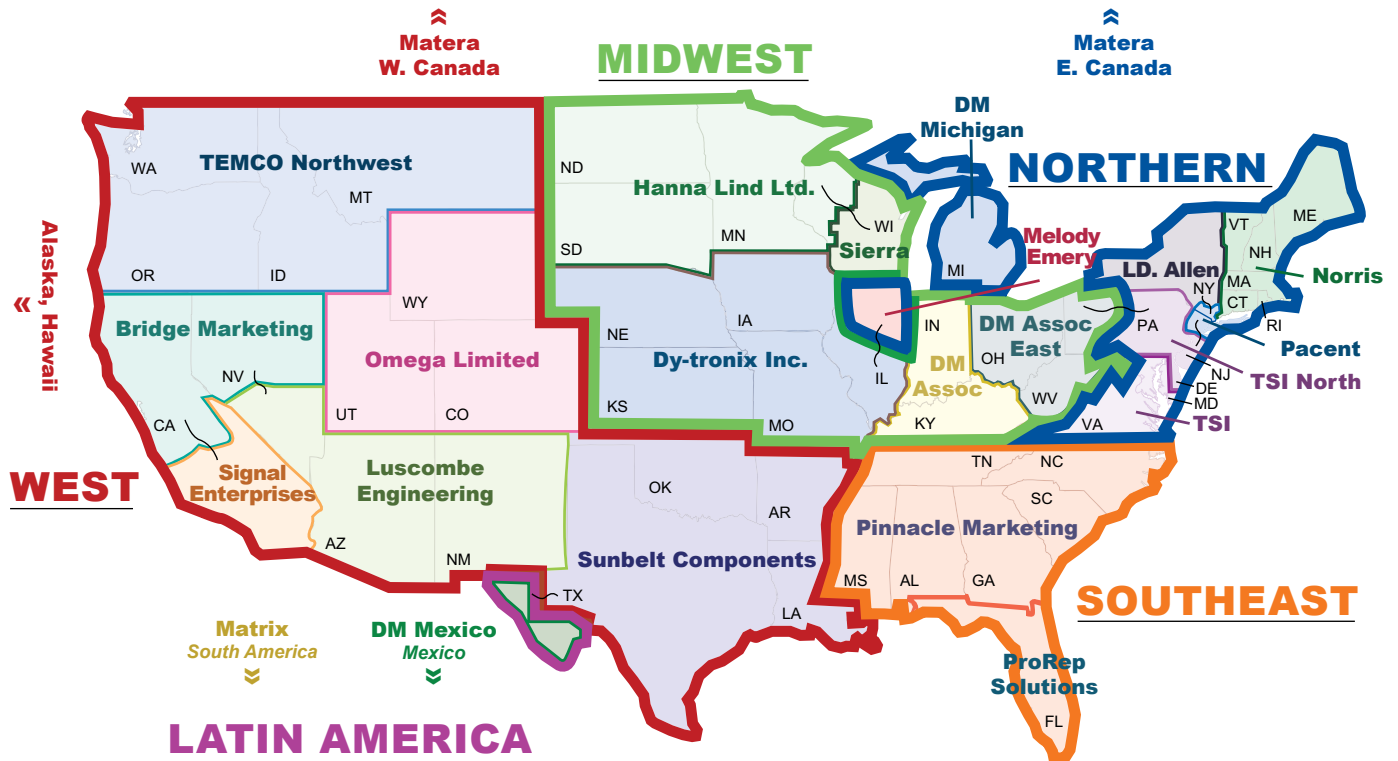


- Notes:**
- 1. Terminal is combination solder lug and quick connect.

\*Manufacturer reserves the right to change product specification without prior notice.

## Authorized Sales Representatives

Click on the group name on the map below to find your local representative or visit [www.carlingtech.com/findarep](http://www.carlingtech.com/findarep).



Americas



Europe  
Middle East  
Africa



Asia-Pacific  
Oceania

## About Carling

Founded in 1920, Carling Technologies is a leading manufacturer of electrical and electronic switches and assemblies, circuit breakers, electronic controls, power distribution units, and multiplexed power distribution systems. With four ISO registered manufacturing facilities and technical sales offices worldwide, Carling Technologies Sales, Service and Engineering teams do much more than manufacture electrical components, they engineer powerful solutions! To learn more about Carling please visit [www.carlingtech.com/company-profile](http://www.carlingtech.com/company-profile).

To view all of Carling's environmental, quality, health & safety certifications please visit [www.carlingtech.com/environmental-certifications](http://www.carlingtech.com/environmental-certifications)

## **Worldwide Headquarters**

Carling Technologies, Inc.  
60 Johnson Avenue, Plainville, CT 06062  
**Phone:** 860.793.9281 **Fax:** 860.793.9231  
**Email:** sales@carlingtech.com

**Northern Region Sales Office:** nrsm@carlingtech.com  
**Southeast Region Sales Office:** sersm@carlingtech.com  
**Midwest Region Sales Office:** mrrsm@carlingtech.com  
**West Region Sales Office:** wrsm@carlingtech.com  
**Latin America Sales Office:** larsm@carlingtech.com

## **Asia-Pacific Headquarters**

Carling Technologies, Asia-Pacific Ltd.,  
Kowloon, Hong Kong  
**Phone:** Int + 852-2737-2277 **Fax:** Int + 852-2736-9332  
**Email:** sales@carlingtech.com.hk

**Shenzhen, China:** shenzhen@carlingtech.com  
**Shanghai, China:** shanghai@carlingtech.com  
**Pune, India:** india@carlingtech.com  
**Kaohsiung, Taiwan:** taiwan@carlingtech.com  
**Yokohama, Japan:** japan@carlingtech.com

## **Europe | Middle East | Africa Headquarters**

Carling Technologies LTD  
4 Airport Business Park, Exeter Airport,  
Clyst Honiton, Exeter, Devon, EX5 2UL, UK  
**Phone:** Int + 44 1392.364422 **Fax:** Int + 44 1392.364477  
**Email:** ltd.sales@carlingtech.com

**Germany:** gmbh@carlingtech.com  
**France:** sas@carlingtech.com



**Carling Technologies™**

Innovative Designs. Powerful Solutions.