



Chipsmall Limited consists of a professional team with an average of over 10 year of expertise in the distribution of electronic components. Based in Hongkong, we have already established firm and mutual-benefit business relationships with customers from,Europe,America and south Asia,supplying obsolete and hard-to-find components to meet their specific needs.

With the principle of “Quality Parts,Customers Priority,Honest Operation,and Considerate Service”,our business mainly focus on the distribution of electronic components. Line cards we deal with include Microchip,ALPS,ROHM,Xilinx,Pulse,ON,Everlight and Freescale. Main products comprise IC,Modules,Potentiometer,IC Socket,Relay,Connector.Our parts cover such applications as commercial,industrial, and automotives areas.

We are looking forward to setting up business relationship with you and hope to provide you with the best service and solution. Let us make a better world for our industry!



Contact us

Tel: +86-755-8981 8866 Fax: +86-755-8427 6832

Email & Skype: info@chipsmall.com Web: www.chipsmall.com

Address: A1208, Overseas Decoration Building, #122 Zhenhua RD., Futian, Shenzhen, China



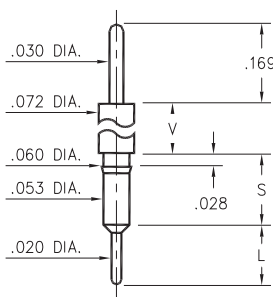
MALE PCB PINS

PRINTED CIRCUIT PINS

3400 ⇨ 3402/3405/3410

34XX-0-00-XX-00-00-03-0

Press-fit in .057 mounting hole

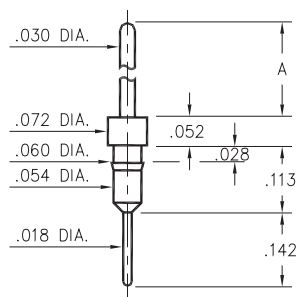


Basic Part Number	Shoulder Height V	Length S	Length L
3402-0	.052	.138	.121
3401-0	.100	.136	.125
3405-0	.169	.146	.115
3400-0	.461	.145	.115
3410-0	.934	.136	.124

3411

3411-X-00-XX-00-00-03-0

Press-fit in .057 mounting hole

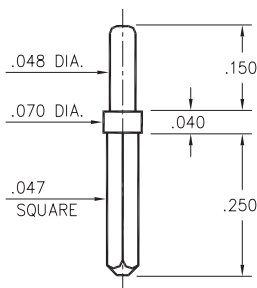


Basic Part Number	Pin Length A
3411-0	.417
3411-1	.217

0600

0600-0-05-XX-00-00-01-0

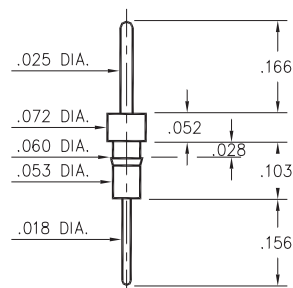
Solder mount .052 mounting hole



0290

0290-0-00-XX-00-00-03-0

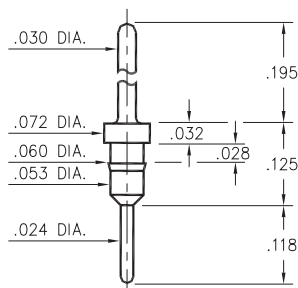
Press-fit in .057 mounting hole



7007

7007-0-00-XX-00-00-03-0

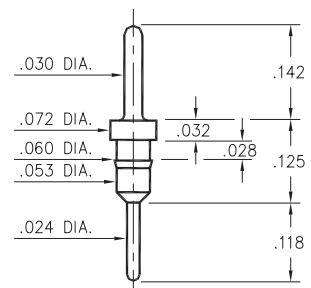
Press-fit in .057 mounting hole



5016

5016-0-00-XX-00-00-03-0

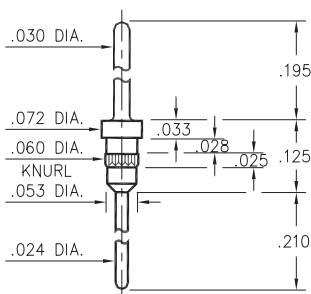
Press-fit in .057 mounting hole



5005

5005-0-00-XX-00-00-03-0

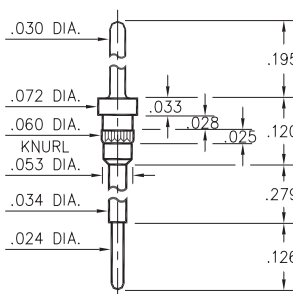
Press-fit in .057 mounting hole



5107

5107-0-00-XX-00-00-03-0

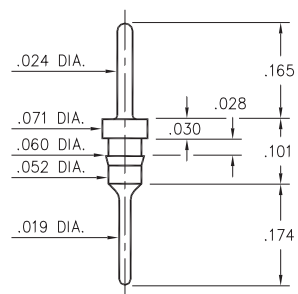
Press-fit in .057 mounting hole



8919

8919-0-00-XX-00-00-03-0

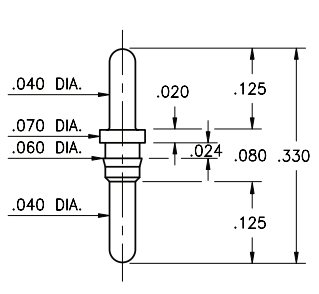
Press-fit in .057 mounting hole



3077

3077-0-00-XX-00-00-03-0

Press-fit in .057 mounting hole



SPECIFICATIONS:

Pin Material: Brass Alloy 360, 1/2 Hard
(Except where noted)

Dimensions: Inches

Tolerances On: Lengths: ±.005
Diameters: ±.002
Angles: ± 2°



ORDER CODE: XXXX - X - 0X - XX - 00 - 00 - XX - 0

BASIC PART #

SPECIFY PIN FINISH:

- 01 200 μ" TIN/LEAD OVER NICKEL
- ◆ 80 200 μ" TIN OVER NICKEL (RoHS)
- ◆ 15 10 μ" GOLD OVER NICKEL (RoHS)
- ◆ 21 20 μ" GOLD OVER NICKEL (RoHS)
- ◆ 34 50 μ" GOLD OVER NICKEL (RoHS)

