



Chipsmall Limited consists of a professional team with an average of over 10 year of expertise in the distribution of electronic components. Based in Hongkong, we have already established firm and mutual-benefit business relationships with customers from,Europe,America and south Asia,supplying obsolete and hard-to-find components to meet their specific needs.

With the principle of “Quality Parts,Customers Priority,Honest Operation,and Considerate Service”,our business mainly focus on the distribution of electronic components. Line cards we deal with include Microchip,ALPS,ROHM,Xilinx,Pulse,ON,Everlight and Freescale. Main products comprise IC,Modules,Potentiometer,IC Socket,Relay,Connector.Our parts cover such applications as commercial,industrial, and automotives areas.

We are looking forward to setting up business relationship with you and hope to provide you with the best service and solution. Let us make a better world for our industry!



Contact us

Tel: +86-755-8981 8866 Fax: +86-755-8427 6832

Email & Skype: info@chipsmall.com Web: www.chipsmall.com

Address: A1208, Overseas Decoration Building, #122 Zhenhua RD., Futian, Shenzhen, China



DMC550 Digital Motor Controller



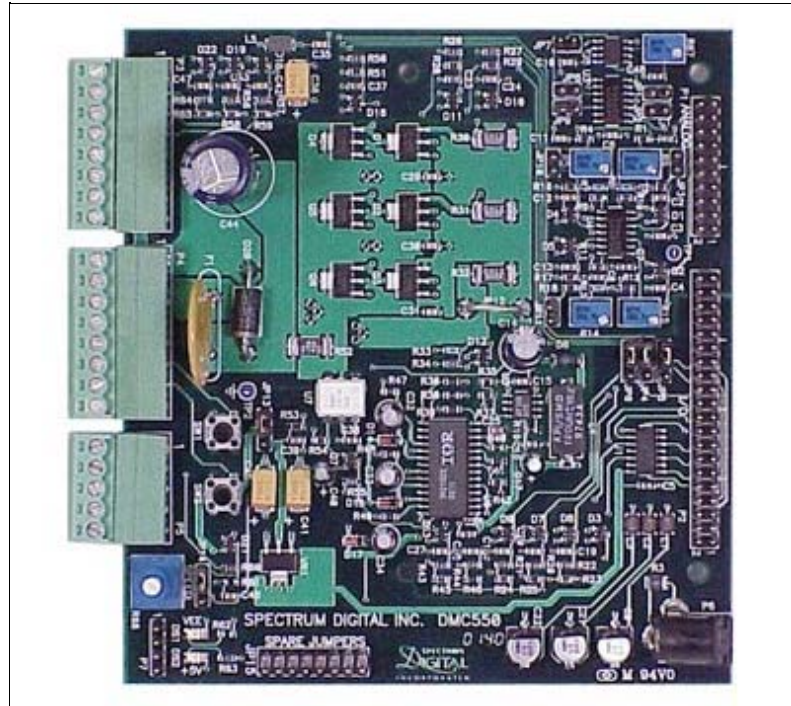
Documentation

Technical Reference

Application

Debug hardware
Debug software
Motor control

Warranty: 1 year from date of purchase



Part #: 701225

DMC550 Digital Motor Controller

Hardware Features

- Provides driver platform for brushless DC motors to operate with Spectrum Digital's F240, F243, LF2407 DSKs, and the eZdsp LF2407A
- 2.5 amp drive at +24 VDC bus
- 3 Hall effect sensor inputs
- Optical encoder input
- 2 General purpose switches
- 1 Potentiometer input
- 2 External switch inputs
- 1 External voltage input
- 3 Phase voltage and current sense inputs

Software Features

- Compatible with Code Composer/Studio from Texas Instruments

What's Included

- DMC550 circuit board
- Technical reference with schematics

Do You Need ?

- JTAG Emulator (XDS510PP PLUS)
- Code Composer/Studio
- eZdsp LF2407A

- 1 Bus voltage sense input
- High side current fault
- Size: 4.75 x 4.40 inches
(121 x 112 mm.)

© 2002-2013 Spectrum Digital, Inc. All Rights Reserved.
