



Chipsmall Limited consists of a professional team with an average of over 10 year of expertise in the distribution of electronic components. Based in Hongkong, we have already established firm and mutual-benefit business relationships with customers from,Europe,America and south Asia,supplying obsolete and hard-to-find components to meet their specific needs.

With the principle of "Quality Parts,Customers Priority,Honest Operation,and Considerate Service",our business mainly focus on the distribution of electronic components. Line cards we deal with include Microchip,ALPS,ROHM,Xilinx,Pulse,ON,Everlight and Freescale. Main products comprise IC,Modules,Potentiometer,IC Socket,Relay,Connector.Our parts cover such applications as commercial,industrial, and automotives areas.

We are looking forward to setting up business relationship with you and hope to provide you with the best service and solution. Let us make a better world for our industry!



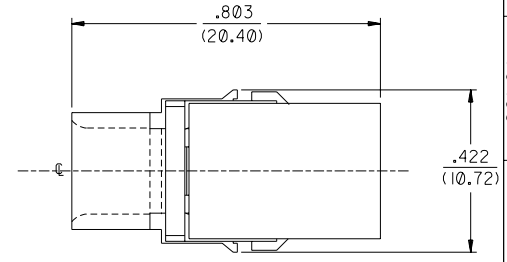
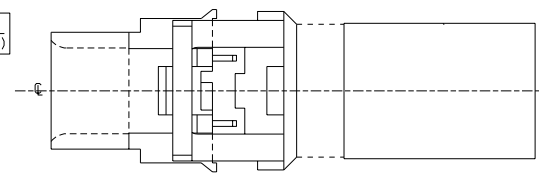
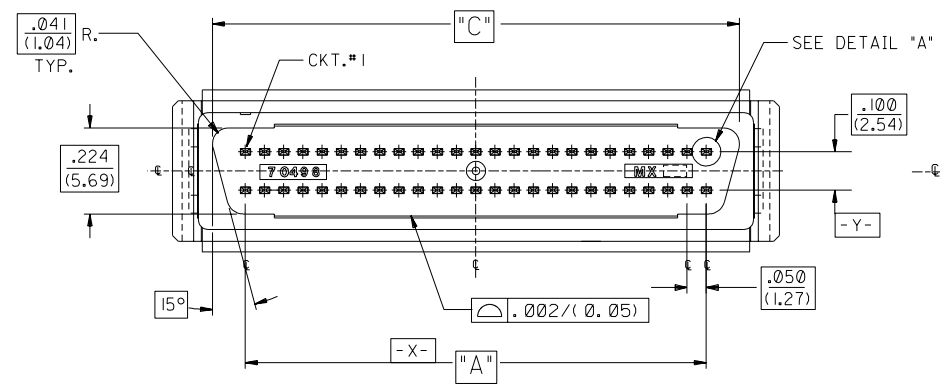
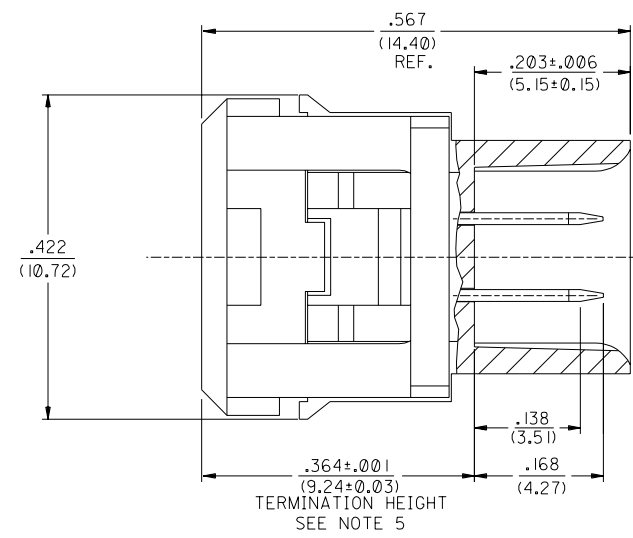
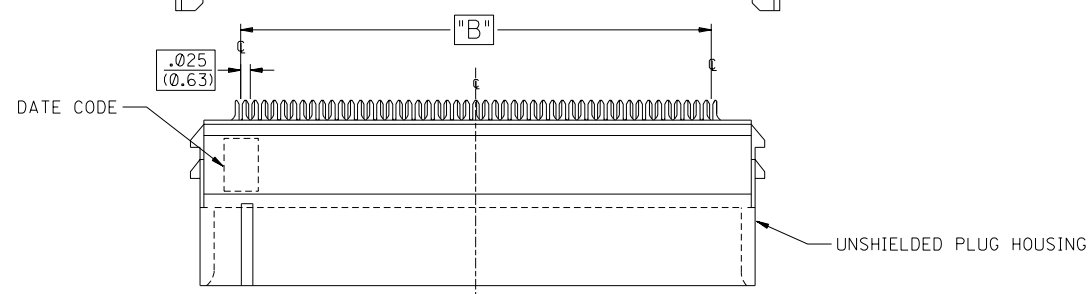
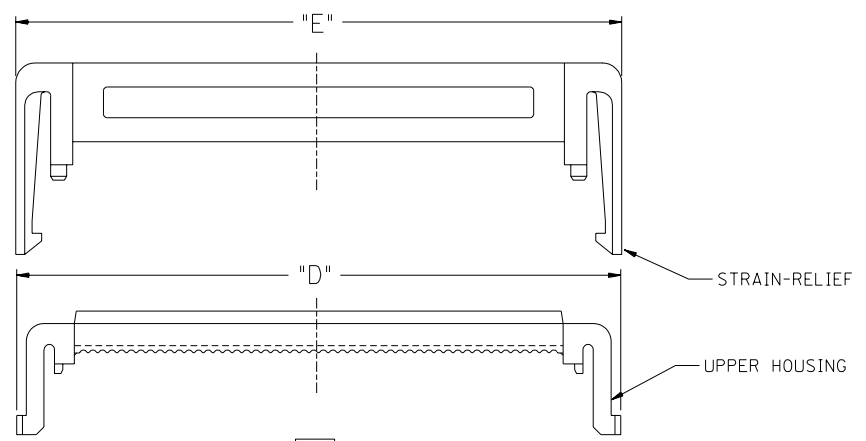
## Contact us

Tel: +86-755-8981 8866 Fax: +86-755-8427 6832

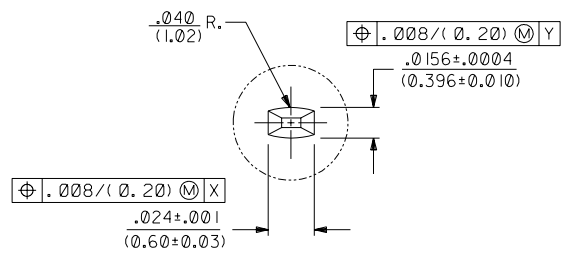
Email & Skype: info@chipsmall.com Web: www.chipsmall.com

Address: A1208, Overseas Decoration Building, #122 Zhenhua RD., Futian, Shenzhen, China





50 CIRCUIT SHOWN



SEE SHEETS 2 & 3 FOR ALL NOTES AND CHART.

LTR.	REVISIONS	LTR.	REVISIONS
E	LEADFREE ECR* UCP2004-1925 DMORGAN 04/04/05	B	ADDED NOTE 7 & CABLE ASSEMBLY PER EC # U81273 J.LONG 97/12/01
D	ADD SHEET 3, & PRELOADED VIEW UDT1999-0464 KAS 98/12/21	A	RELEASED PER ECN # U60545 95/11/02 J. LONG
C	ADDED 70498-5101 TO CHART PER EC #UDT1998-0089 J.LONG 98/03/24		

DIMENSIONS SHOWN (METRIC) INCH	
UNLESS OTHERWISE SPECIFIED TOLERANCES: ANGULAR 1/2°	
INCH	METRIC
3 PLACE ± .005	
2 PLACE ± --- ± 0.13	
1 PLACE --- ± ---	

DRAFT WHERE APPLICABLE MUST REMAIN WITHIN DIMENSIONS

DRWG. BY: J. Long CHK'D. BY: J. Long  
 APP'D. BY: DCB SCALE: 4:1

REVISE ONLY ON CAD SYSTEM	
TITLE	PART NO.
SCSI ALL-PLASTIC MODULAR SUB-ASSEMBLY KIT FOR .025 RIBBON CABLE PLUG	SDMS-70498-5***
MOLEX INCORPORATED	SHEET NO. 1 of 3
LITSE,ILL. 60532	DATE 95/11/08
U.S.A.	U.S.A.
FILE NAME S7049851 DGN	DIV. DC
THIS DRAWING CONTAINS INFORMATION THAT IS PROPRIETARY TO MOLEX INC. AND SHOULD NOT BE USED WITHOUT WRITTEN PERMISSION.	

3	D
2	E
1	E
	REV.

NOTES:

- REFER TO PS-79058 PRODUCT SPEC FOR ELECTRICAL, MECHANICAL AND ENVIRONMENTAL SPECIFICATIONS.
- MATERIAL:  
 PLUG HOUSING: POLYESTER (PBT), GLASS FILLES, UL94 V-0, COLOR: BLACK  
 CONTACT: PHOSPHOR BRONZE  
 UPPER HOUSING: POLYESTER (PBT), GLASS FILLES, UL94 V-0, COLOR: BLACK  
 STRAIN RELIEF: POLYESTER (PBT), GLASS FILLES, UL94 V-0, COLOR: BLACK

FINISHES: TERMINALS:

(GOLD 15)  
 SELECTIVE GOLD: THICKNESS= 15 MICROINCHES/(0.38 MICROMETERS) MINIMUM.  
 SELECTIVE TIN: THICKNESS= 75 MICROINCHES/(1.90 MICROMETERS) MINIMUM.  
 NICKEL UNDERPLATE OVERALL.

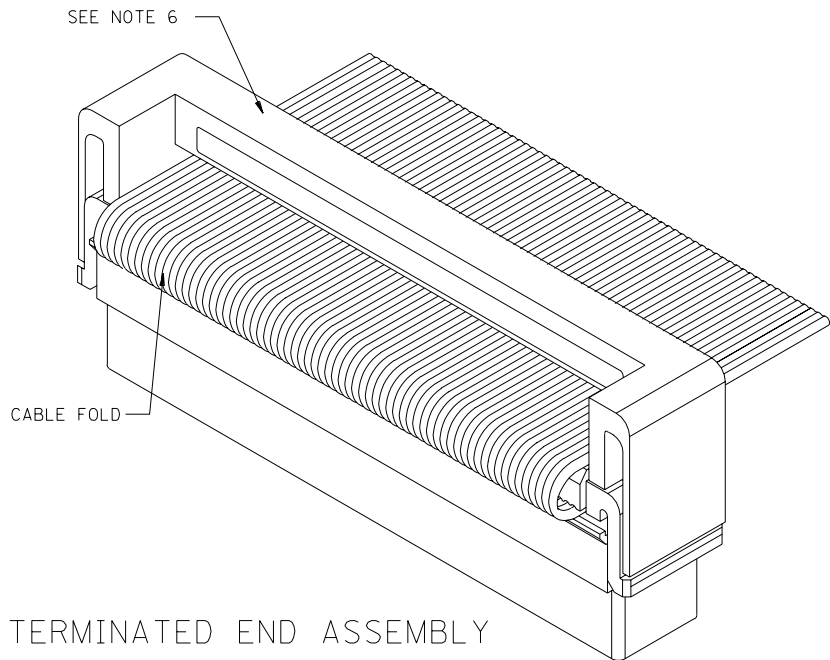
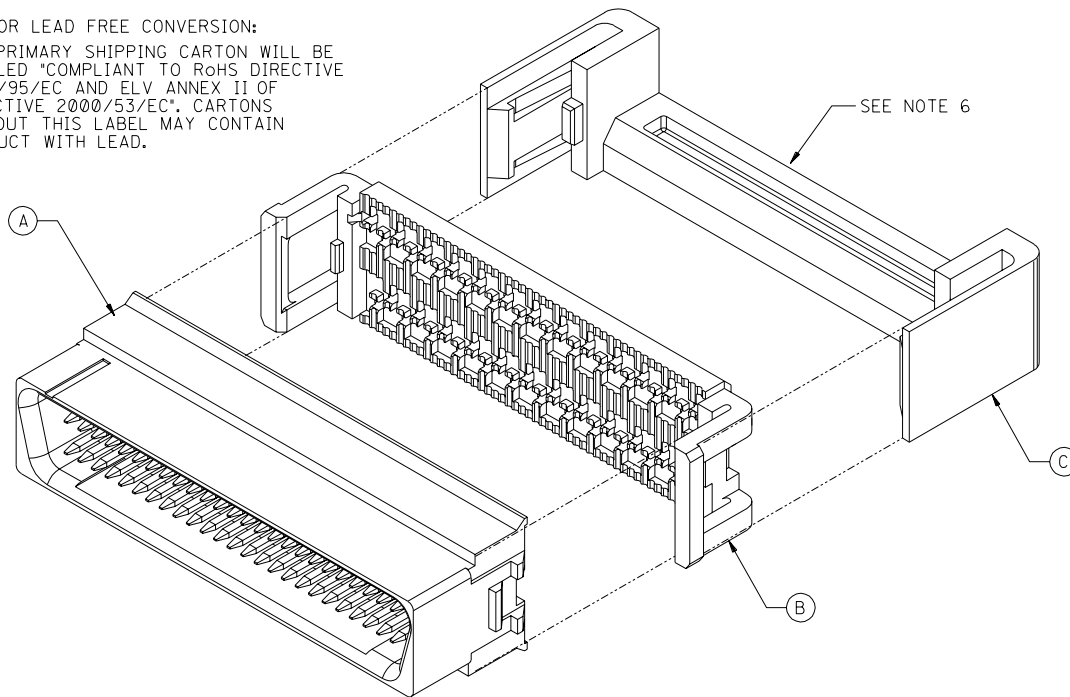
(GOLD 30)  
 SELECTIVE GOLD: THICKNESS= 30 MICROINCHES/(0.76 MICROMETERS) MINIMUM.  
 SELECTIVE TIN: THICKNESS= 75 MICROINCHES/(1.90 MICROMETERS) MINIMUM.  
 NICKEL UNDERPLATE OVERALL.

- PACKAGING: SUBASSEMBLY SUPPLIED IN TUBES AND UPPER HSG. AND STRAIN-RELIEF SUPPLIED IN BULK PER PK-70873-0258.
- RECOMMENDED CABLE: 30 AWG STRANDED OR SOLID, .025 RIBBON. CONTACT MOLEX INC. FOR LIST OF APPROVED CABLES.
- APPLICATION TOOL CLOSURE OVER ASSY TO BE CONTROLLED TO .364±.001 USING A POSITIVE STOP TO ASSURE PROPER TERMINATION.
- STRAIN-RELIEF MAY BE POSITIONED SO THE TIE-BAR ORIENTATION CAN BE ON EITHER SIDE IN RELATIONSHIP TO THE CONNECTOR "D" SHAPE. IF THE STRAIN-RELIEF WILL BE USED ON A CABLE HARNESS AT AN END TERMINATION THE ORIENTATION SHOULD BE AS SHOWN. THE TIE-BAR SHOULD BE ON THE OPPOSITE SIDE OF THE CONNECTOR FROM THE CABLE FOLD.

ITEM NO.	CKT. SIZE	PLATING TYPE	ITEM	DESCRIPTION/ITEM NO.	QTY	"A"		"B"		"C"		"D"		"E"	
						IN.	MM.	IN.	MM.	IN.	MM.	IN.	MM.	IN.	MM.
70498-5050	50	GOLD 30	A	PLUG ASSEMBLY : 70498-2050	1										
			B	UPPER HOUSING : 70497-1050	1	1.200	30.48	1.225	31.12	1.372	34.85	1.577	40.06	1.580	40.13
			C	STRAIN-RELIEF : 70499-3050	1										
70498-5068	68	GOLD 30	A	PLUG ASSEMBLY : 70498-2068	1										
			B	UPPER HOUSING : 70497-1068	1	1.650	41.91	1.675	42.54	1.822	46.28	2.027	51.49	2.030	51.56
			C	STRAIN-RELIEF : 70499-3068	1										
70498-5101	68	GOLD 30	A	PLUG ASSEMBLY : 70498-2168	1										
			B	UPPER HOUSING : 70497-1068	1	1.650	41.91	1.675	42.54	1.822	46.28	2.027	51.49	2.030	51.56
			C	STRAIN-RELIEF : 70499-3068	1										
70498-5201	68	GOLD 15	A	PLUG ASSEMBLY : 70498-2168	1										
			B	UPPER HOUSING : 70497-1068	1	1.650	41.91	1.675	42.54	1.822	46.28	2.027	51.49	2.030	51.56
			C	STRAIN-RELIEF : 70499-3068	1										

NOTE FOR LEAD FREE CONVERSION:

THE PRIMARY SHIPPING CARTON WILL BE LABELED \*COMPLIANT TO ROHS DIRECTIVE 2002/95/EC AND ELV ANNEX II OF DIRECTIVE 2000/53/EC\*. CARTONS WITHOUT THIS LABEL MAY CONTAIN PRODUCT WITH LEAD.



DETAIL FOR PK-70873-0258  
 FOR TUBE/BULK PACKAGING  
 ITEM SERIES 70498-50\*\* & -51\*\*

50 CIRCUIT ASSEMBLY

SEE ALSO SHEET 3

DIMENSIONS SHOWN (METRIC) INCH		UNLESS OTHERWISE SPECIFIED TOLERANCES: ANGULAR ± 1/2°		MFG. SH. REV.	
5 PLACE	±	INCH	METRIC		
2 PLACE	±	---	±		
1 PLACE	---	±	---		
DRAFT WHERE APPLICABLE MUST REMAIN WITHIN DIMENSIONS				REVISE ONLY ON CAD SYSTEM	
DRG. BY: J. Long		CHK'D. BY: J. Long		TITLE: SCSI ALL-PLASTIC MODULAR SUB-ASSEMBLY KIT FOR .025 RIBBON CABLE PLUG	
APP'D. BY: DCB		SCALE: 4:1		PART NO. SEE CHART SDMS-70498-5***	
LTR. REVISIONS		LTR. REVISIONS		FROM: MOLEX INCORPORATED SHEET NO. 2 DATE 95/11/08	
				FILE NAME: S7049852.DGN THIS DRAWING CONTAINS INFORMATION THAT IS PROPRIETARY TO MOLEX INC. AND SHOULD NOT BE USED WITHOUT WRITTEN PERMISSION.	

TERMINATED END ASSEMBLY  
 FOR REFERENCE ONLY