



Chipsmall Limited consists of a professional team with an average of over 10 year of expertise in the distribution of electronic components. Based in Hongkong, we have already established firm and mutual-benefit business relationships with customers from,Europe,America and south Asia,supplying obsolete and hard-to-find components to meet their specific needs.

With the principle of “Quality Parts,Customers Priority,Honest Operation,and Considerate Service”,our business mainly focus on the distribution of electronic components. Line cards we deal with include Microchip,ALPS,ROHM,Xilinx,Pulse,ON,Everlight and Freescale. Main products comprise IC,Modules,Potentiometer,IC Socket,Relay,Connector.Our parts cover such applications as commercial,industrial, and automotives areas.

We are looking forward to setting up business relationship with you and hope to provide you with the best service and solution. Let us make a better world for our industry!



Contact us

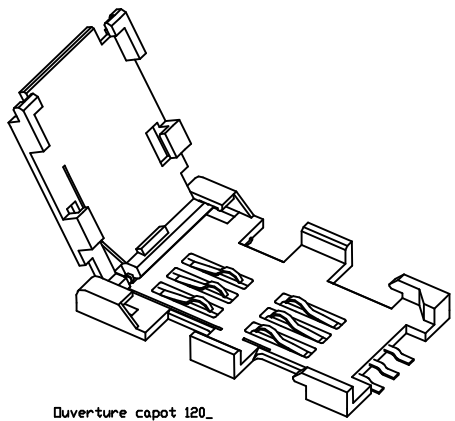
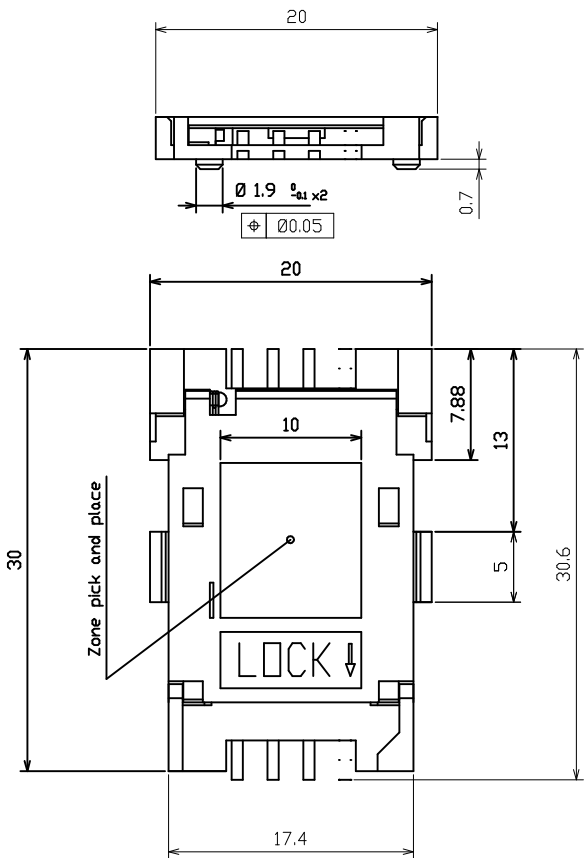
Tel: +86-755-8981 8866 Fax: +86-755-8427 6832

Email & Skype: info@chipsmall.com Web: www.chipsmall.com

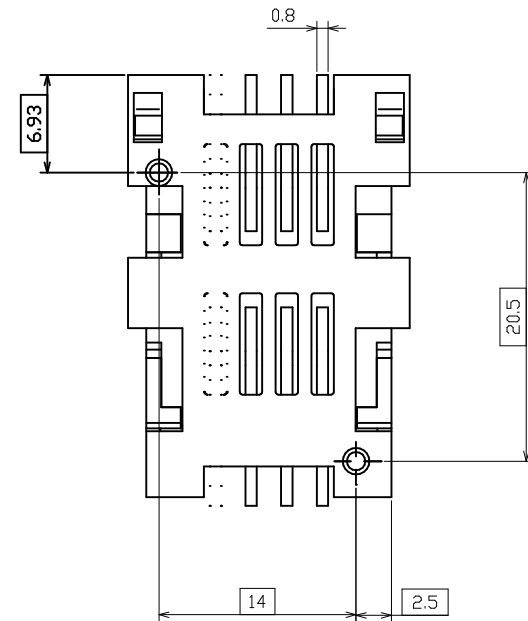
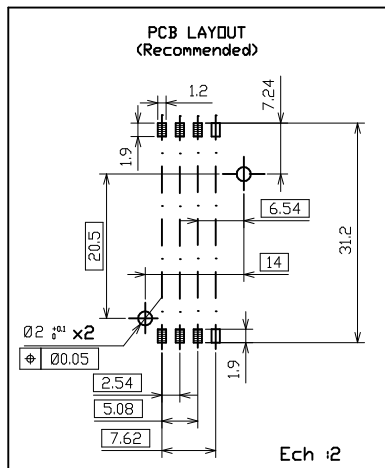
Address: A1208, Overseas Decoration Building, #122 Zhenhua RD., Futian, Shenzhen, China



CATALOGUE NUMBER
7112S0815X11
7112S0825X11



Duverture capot 120_



Matiere / Basic material		Specif / Spec	
Tolerances generales / general tolerances		Façon/Routing	
±0.1	Traitement / Processing	Finition / Finishing	Protection / Protecting
-	Dessine / Draw	Verifie / Checked	Approuve / Approved
JB.BERNARDET	ELCAILLER	E.LUDIC	-
ECHELLE/SCALE 1/4	Plot	Dossier / File	VXX27835
Connecteur S08 capot plein avec ressort			-
CONNECTORS PONTARLIER Rue Claude CHAPPE BP19 25300 PONTARLIER CEDEX			COMMUNICATION/REPRODUCTION/UTILISATION INTERDITES SAUF AUTORISATION ECRITE ANY PART OF THIS DOCUMENT MAY BE REPRODUCED REPRODUCED OR USED WITHOUT PRIOR WRITTEN PERMISSION
A'2	PAGE/PAGE -/-	VRW 11881	EDITION/ISSUE 01/08-04-97