



Chipsmall Limited consists of a professional team with an average of over 10 year of expertise in the distribution of electronic components. Based in Hongkong, we have already established firm and mutual-benefit business relationships with customers from,Europe,America and south Asia,supplying obsolete and hard-to-find components to meet their specific needs.

With the principle of “Quality Parts,Customers Priority,Honest Operation,and Considerate Service”,our business mainly focus on the distribution of electronic components. Line cards we deal with include Microchip,ALPS,ROHM,Xilinx,Pulse,ON,Everlight and Freescale. Main products comprise IC,Modules,Potentiometer,IC Socket,Relay,Connector.Our parts cover such applications as commercial,industrial, and automotives areas.

We are looking forward to setting up business relationship with you and hope to provide you with the best service and solution. Let us make a better world for our industry!



Contact us

Tel: +86-755-8981 8866 Fax: +86-755-8427 6832

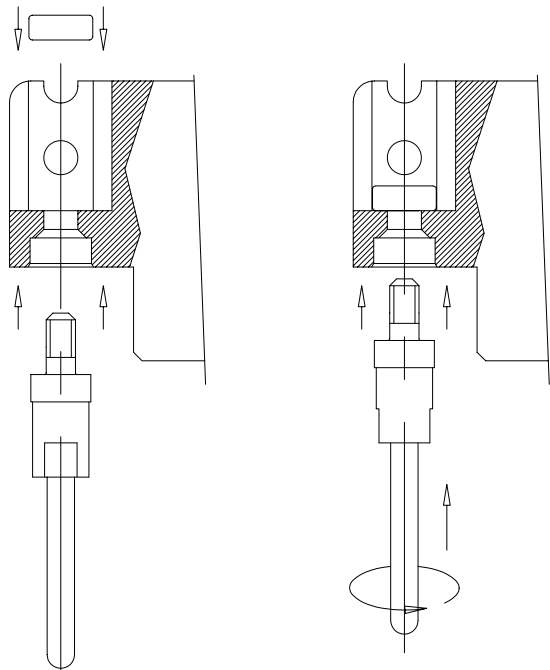
Email & Skype: info@chipsmall.com Web: www.chipsmall.com

Address: A1208, Overseas Decoration Building, #122 Zhenhua RD., Futian, Shenzhen, China



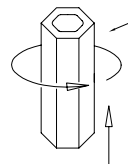
PRODUCT NO.

SEE TABLE

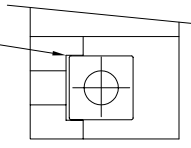


UN-ASSEMBLED GUIDE PIN

SEE NOTE 2



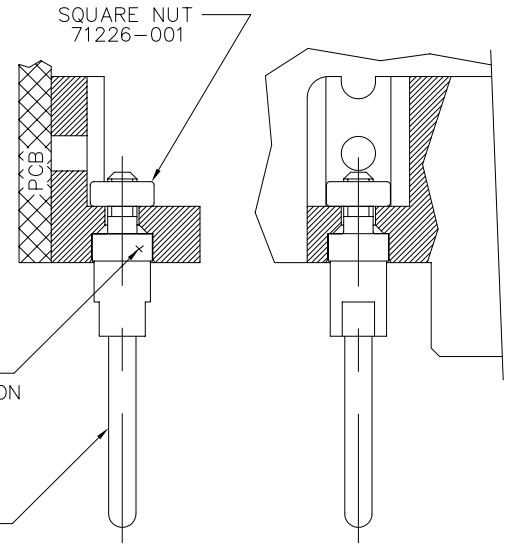
SQUARE NUT HELD FROM ROTATING BY SLOT



SQUARE NUT 71226-001

ROUND CONFIGURATION

GUIDE PIN 71225-001



ASSEMBLED GUIDE PIN

ASSEMBLY NOTE:
AFTER CONNECTOR IS ON PCB,
INSERT THE SQUARE NUT, AND
THEN SCREW IN THE GUIDE PIN



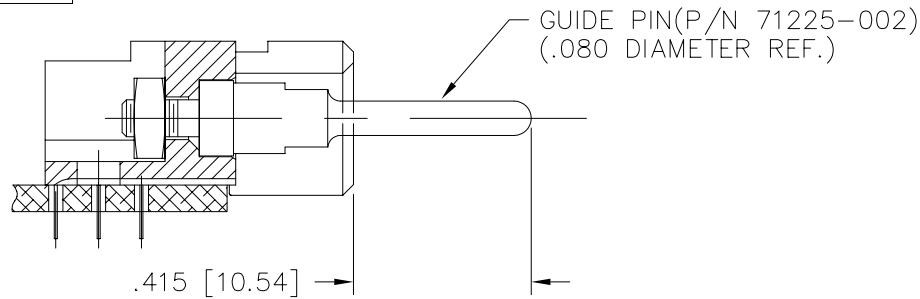
FCJconnect.com

Copyright FCJ

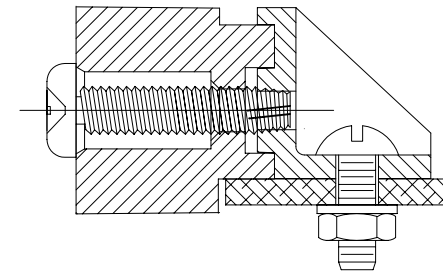
mat'l. code		surface		tolerance		projection		product family	
NOTE 1		ISO 1302		ISO 406		ISO 1101		HPC	
ltr		ecn		no		dr		date	
G									
		tolerances unless otherwise specified		angles		linear		INCH/MM	
				0°±2'		.xx±.01/.3		scale 1:1	
						.xxx±.005/.13		title	
						.xxx±.0020/.051		RECEPT MOUNTED MALE GUIDE PIN	
		dr		D.HORCHLER		7/8/05		dwg no	
		enr		D.HORCHLER		7/8/05		sheet 2 of 4 size	
		chr		T.BREWBAKER		7/8/05		71225	
		app		D.HORCHLER		7/8/05		A3	
sheet		revision						type	
index		sheet						Product Customer Drawing	



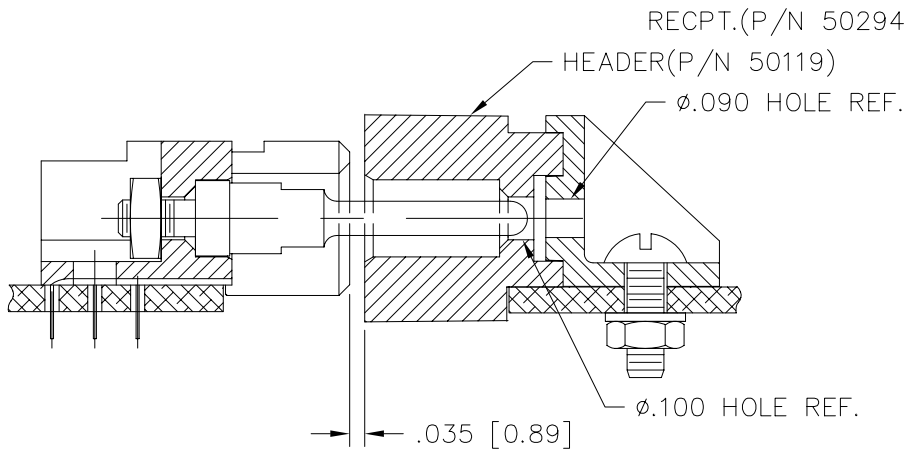
PRODUCT NUMBER
SEE TABLE



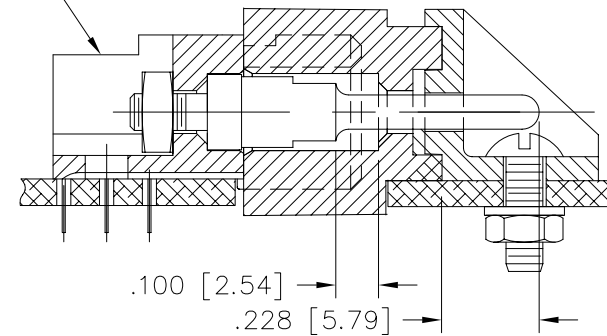
GUIDE PIN, MOUNTED TO RECPT.



HOUSING w/ BRACKET



GUIDE PIN FIRST CONTACT



FULLY MATED

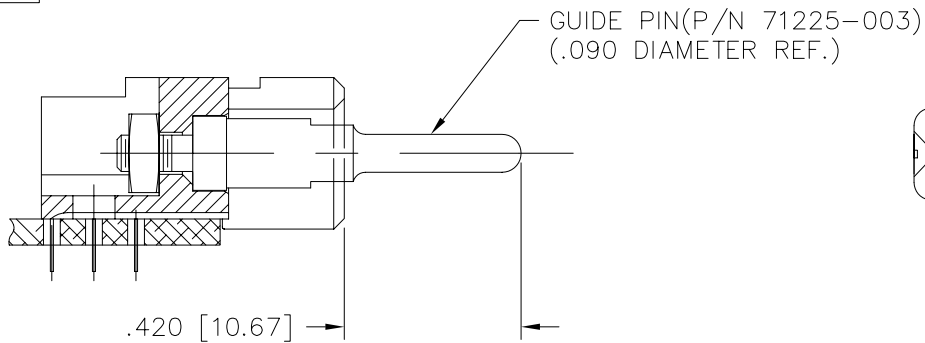
END MOUNTED GUIDE PIN ON RECEPTACLE

FCJ
FCIconnect.com

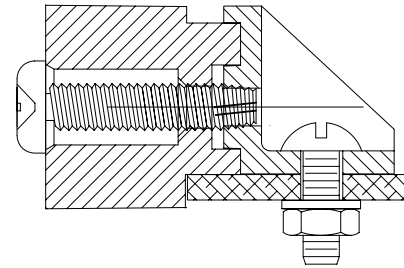
Copyright FCI

mat'l. code NOTE 1		surface ISO 1302 ✓	tolerance ISO 406 ISO 1101	projection ⊕	product family HPC	
ltr	ecr	no	dr	date	tolerances unless otherwise specified	
G					angles linear .xx±.01/.3	
					.xxx±.005/.13	
					0'±2' .xxx±.0020/.051	
			dr	D.HORCHLER	7/8/05	
			enr	D.HORCHLER	7/8/05	
			chr	T.BREWBAKER	7/8/05	
			appd	D.HORCHLER	7/8/05	
sheet	revision					
index	sheet					
				INCH/MM	scale 1:1	
				FCJ	title RECEPT MOUNTED MALE GUIDE PIN	
					dwg no 71225	sheet 3 of 4 size A3
					type Product Customer Drawing	

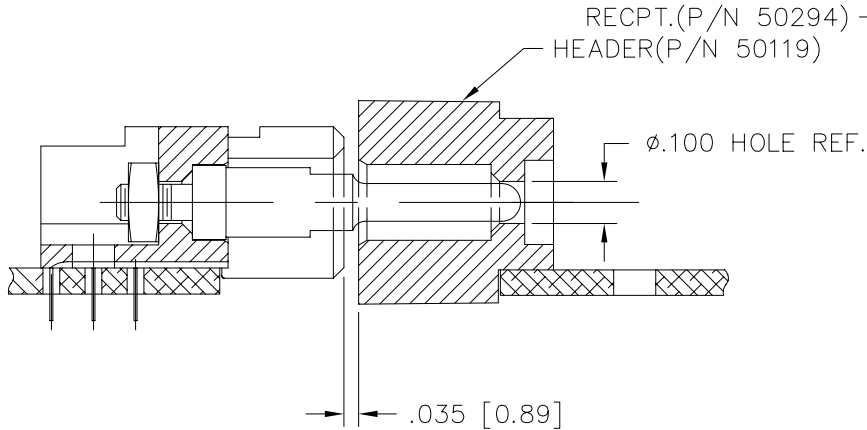
PRODUCT NUMBER
SEE TABLE



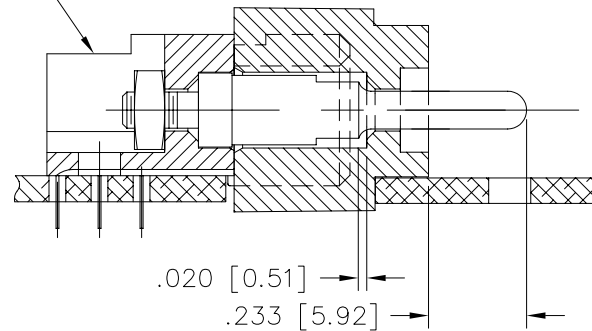
GUIDE PIN, MOUNTED TO RECPT.



HOUSING w/BRACKET



GUIDE PIN FIRST CONTACT



FULLY MATED

END MOUNTED GUIDE PIN ON RECEPTACLE

FCJ
FCIconnect.com

Copyright FCI

mat'l. code		surface		tolerance		projection		product family			
NOTE 1		ISO 1302 ✓		ISO 406 ISO 1101				HPC			
ltr		ecn		date		tolerances unless otherwise specified		title			
G						angles linear .xx±.01/.3 .xxx±.005/.13 .xxxx±.0020/.051		INCH/MM			
				0'±2'		scale 1:1		dwg no			
				dr D.HORCHLER 7/8/05				sheet 4 of 4 size			
				enr D.HORCHLER 7/8/05				71225		A3	
				chr T.BREWBAKER 7/8/05				type		Product Customer Drawing	
				appd D.HORCHLER 7/8/05							
sheet index		revision sheet									

form: A3