



Chipsmall Limited consists of a professional team with an average of over 10 year of expertise in the distribution of electronic components. Based in Hongkong, we have already established firm and mutual-benefit business relationships with customers from,Europe,America and south Asia,supplying obsolete and hard-to-find components to meet their specific needs.

With the principle of “Quality Parts,Customers Priority,Honest Operation,and Considerate Service”,our business mainly focus on the distribution of electronic components. Line cards we deal with include Microchip,ALPS,ROHM,Xilinx,Pulse,ON,Everlight and Freescale. Main products comprise IC,Modules,Potentiometer,IC Socket,Relay,Connector.Our parts cover such applications as commercial,industrial, and automotives areas.

We are looking forward to setting up business relationship with you and hope to provide you with the best service and solution. Let us make a better world for our industry!



## Contact us

Tel: +86-755-8981 8866 Fax: +86-755-8427 6832

Email & Skype: info@chipsmall.com Web: www.chipsmall.com

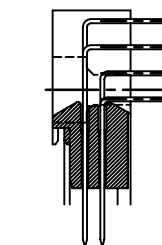
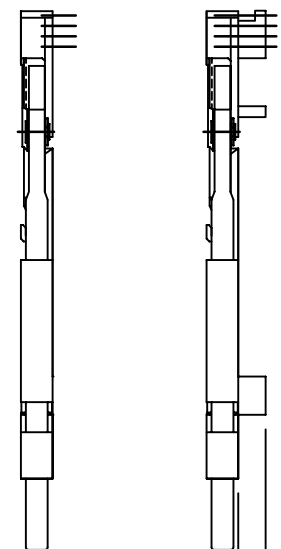
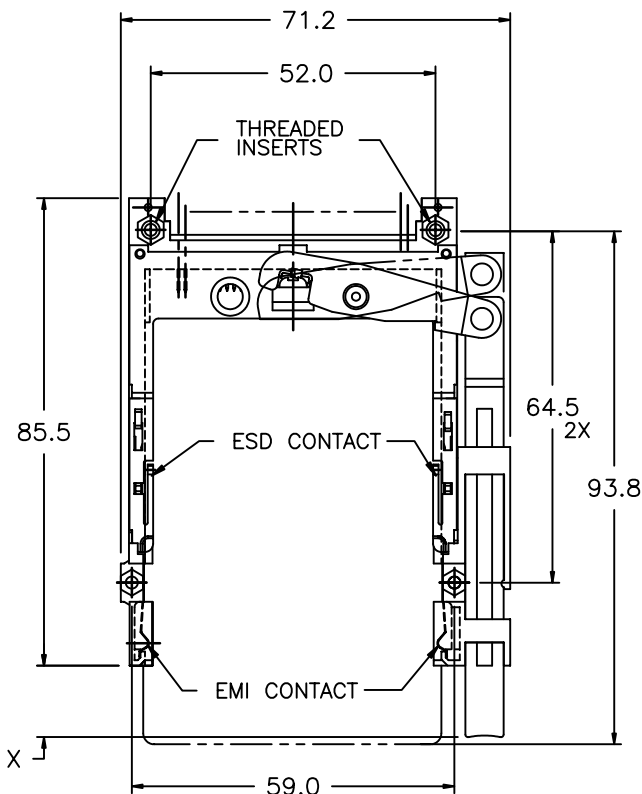
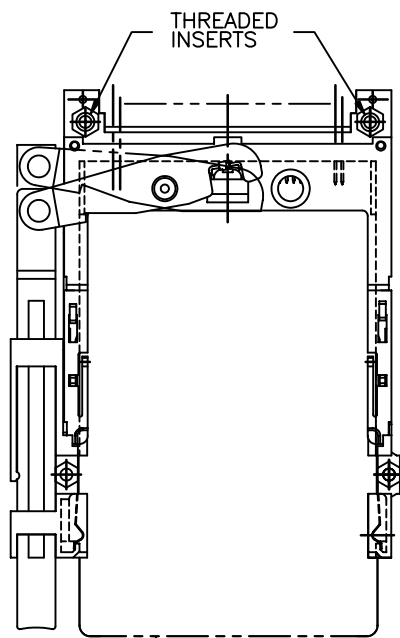
Address: A1208, Overseas Decoration Building, #122 Zhenhua RD., Futian, Shenzhen, China



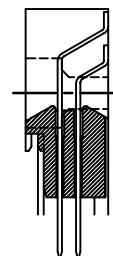
PCMCIA COMPONENTS:  
SINGLE DECK ASSEMBLY WITH THREADED INSERTS  
IN HEADER HOLD-DOWNS

Tous droits strictement reserves. Reproduction ou communication a des tiers interdite sous quelque forme que ce soit sans autorisation ecrite du Proprietaire. Propriete de c FCI. Droits de reproduction FCI.

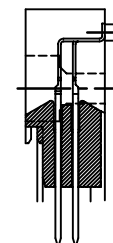
All rights strictly reserved. Reproduction or issue to third parties in any form whatever is not permitted without written authority from the proprietor. Property of FCI. Copyright FCI.



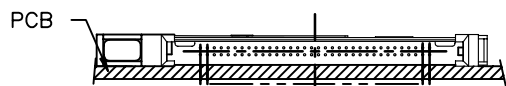
THRU-HOLE  
RIGHT-ANGLE



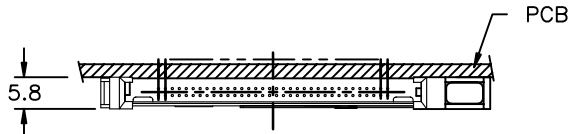
SURFACE MOUNT  
STAGGERED



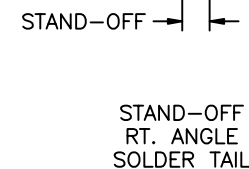
SURFACE MOUNT  
IN-LINE



LEFT PUSH ROD  
RT. ANGLE SOLDER TAIL  
ABOVE PCB SIDE  
P/N: 71271-100CA/100CALF



RIGHT PUSH ROD  
RT. ANGLE SOLDER TAIL  
BELOW PCB SIDE  
P/N: 71271-500CA/500CALF



STAND-OFF  
RT. ANGLE  
SOLDER TAIL

- REFER TO HEADER DRAWING 92856 AND EJECT MECHANISM 92192 FOR ADDITIONAL DIMENSIONS, MATERIAL, AND PLATING INFORMATION.
- REFER TO TA-946 FOR PCB LAYOUT AND PCB KEEP-OUT AREA.
- RECOMMENDED SCREW TORQUE: 1.0 TO 1.5 MAX in-lbs. (1.2-1.7 cm-kgs).

mat'l. code				tolerances unless otherwise specified		CUSTOMER COPY	FCI Electronics www.fciconnect.com		
ltr	ecn no	dr	date	linear	.X±.3	projection	title		
A	V51047	SAR	8/30/95		.XX±.13		68 POS. EJECT HEADER ASSEMBLY WITH THREADED INSERTS		
B	V60578	RHG	4/6/96		.XXX±.051		product family MCS code -		
C	V12254	TFG	9/25/01	angles	0° ±2'	MM	size dwg no		
D	N05-0054	WB	03/01/05	dr	S.ROYER 8/30/95		scale 1:1	A4 71271	
				enr	D.BRANN 8/30/95			sheet 1 of 3	
				chr	D.BRANN 8/30/95				
				appd	D.BRANN 8/30/95				
sheet index	revision sheet	D	D						
		1	2						

PCMCIA COMPONENTS:  
SINGLE DECK ASSEMBLY WITH THREADED INSERTS  
IN HEADER HOLD-DOWNS

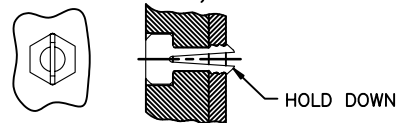
PCB SIDE ①	PUSH ROD LOCATION ①	SOLDER TAIL ②	STANDOFF (MM)	HEADER PART NUMBER 92856-												AND MECHANISM P/N 92192- ③ ④					TO MAKE FINAL ASSY PART NUMBER NOTE ④				
				000	001	002	010	020	040	500	501	502	510	520	540	00XY	02XY	04XY	05XY	10XY		12XY	14XY	15XY	
ABOVE	RIGHT	R/A	NONE																						71271-000XY
ABOVE	LEFT	R/A	NONE																						71271-100XY
BELOW	RIGHT	R/A	NONE																						71271-500XY
BELOW	LEFT	R/A	NONE																						71271-600XY
ABOVE	RIGHT	R/A	2																						71271-020XY
ABOVE	LEFT	R/A	2																						71271-120XY
BELOW	RIGHT	R/A	2																						71271-520XY
BELOW	LEFT	R/A	2																						71271-620XY
ABOVE	RIGHT	R/A	4																						71271-040XY
ABOVE	LEFT	R/A	4																						71271-140XY
BELOW	RIGHT	R/A	4																						71271-540XY
BELOW	LEFT	R/A	4																						71271-640XY
ABOVE	RIGHT	R/A	5																						71271-050XY
ABOVE	LEFT	R/A	5																						71271-150XY
BELOW	RIGHT	R/A	5																						71271-550XY
BELOW	LEFT	R/A	5																						71271-650XY
ABOVE	RIGHT	SMT-IL	NONE																						71271-002XY
ABOVE	LEFT	SMT-IL	NONE																						71271-102XY
BELOW	RIGHT	SMT-IL	NONE																						71271-502XY
BELOW	LEFT	SMT-IL	NONE																						71271-602XY
ABOVE	RIGHT	SMT-STG	NONE																						71271-001XY
ABOVE	LEFT	SMT-STG	NONE																						71271-101XY
BELOW	RIGHT	SMT-STG	NONE																						71271-501XY
BELOW	LEFT	SMT-STG	NONE																						71271-601XY

NOTES:

- ① PCB SIDE AND PUSHROD LOCATION ARE AS APPEARS INSTALLED.
- ② SOLDER TAIL KEY:  
R/A = RIGHT ANGLE PIN-THROUGH-HOLE  
SMT-STG = STAGGERED SURFACE MOUNT  
SMT-IL = SURFACE MOUNT IN-LINE (SINGLE ROW)
- ③ X = PUSHROD LENGTH FROM END OF GUIDE RAIL WHEN CARD INSERTED = C = 13.0mm (LENGTH CURRENTLY TOOLED)  
Y = PUSHROD COLOR = A = BLACK (COLOR CURRENTLY AVAILABLE)  
X AND Y DESIGNATE THE PUSHROD. THEY MUST BE THE SAME LETTER IN THE EJECT MECHANISM AND ASSEMBLY PART NUMBERS.  
HERE IS AN EXAMPLE:

MECHANISM 92192-00CA IS USED IN  
ASSEMBLY 71271-000CA

- ④ ADD "H" TO PART NUMBER FOR OPTIONAL HOLD DOWN (2 PER ASSEMBLY IN EJECT MECHANISM).



5 PACKAGING SPECIFICATION: GS-14-341

mat'l. code				tolerances unless otherwise specified				CUSTOMER COPY		 www.fciconnect.com				
ltr	ecn no	dr	date	linear	.X±.3				projection	title				
D					.XX±.13					68 POS EJECT HEADER ASSEMBLY WITH THREADED INSERTS				
					.XXX±.051					product family MCS code -				
				angles	0° ±2'				 scale 1:1	size		dwg no		sheet
				dr	S.ROYER	8/30/95	A4			71271		2 of		
				enr	D.BRANN	8/30/95								
				chr	D.BRANN	8/30/95								
				appd	D.BRANN	8/30/95								
sheet index	revision sheet													

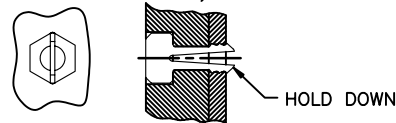
PCMCIA COMPONENTS:  
 SINGLE DECK ASSEMBLY WITH THREADED INSERTS  
 IN HEADER HOLD-DOWNS

PCB SIDE ①	PUSH ROD LOCATION ①	SOLDER TAIL ②	STANDOFF (MM)	HEADER PART NUMBER 92856-***LF											AND MECHANISM P/N 92192- ③ ④ 4					TO MAKE FINAL ASSY PART NUMBER NOTE ④							
				000	001	002	010	020	040	500	501	502	510	520	540	00XY	02XY	04XY	05XY		10XY	12XY	14XY	15XY			
ABOVE	RIGHT	R/A	NONE	█												█											71271-000XYLF
ABOVE	LEFT	R/A	NONE	█																							71271-100XYLF
BELOW	RIGHT	R/A	NONE																								71271-500XYLF
BELOW	LEFT	R/A	NONE																								71271-600XYLF
ABOVE	RIGHT	R/A	2																								71271-020XYLF
ABOVE	LEFT	R/A	2																								71271-120XYLF
BELOW	RIGHT	R/A	2																								71271-520XYLF
BELOW	LEFT	R/A	2																								71271-620XYLF
ABOVE	RIGHT	R/A	4																								71271-040XYLF
ABOVE	LEFT	R/A	4																								71271-140XYLF
BELOW	RIGHT	R/A	4																								71271-540XYLF
BELOW	LEFT	R/A	4																								71271-640XYLF
ABOVE	RIGHT	R/A	5																								71271-050XYLF
ABOVE	LEFT	R/A	5																								71271-150XYLF
BELOW	RIGHT	R/A	5																								71271-550XYLF
BELOW	LEFT	R/A	5																								71271-650XYLF
ABOVE	RIGHT	SMT-IL	NONE																								71271-002XYLF
ABOVE	LEFT	SMT-IL	NONE																								71271-102XYLF
BELOW	RIGHT	SMT-IL	NONE																								71271-502XYLF
BELOW	LEFT	SMT-IL	NONE																								71271-602XYLF
ABOVE	RIGHT	SMT-STG	NONE																								71271-001XYLF
ABOVE	LEFT	SMT-STG	NONE																								71271-101XYLF
BELOW	RIGHT	SMT-STG	NONE																								71271-501XYLF
BELOW	LEFT	SMT-STG	NONE																								71271-601XYLF

NOTES:

- ① PCB SIDE AND PUSHROD LOCATION ARE AS APPEARS INSTALLED.
- ② SOLDER TAIL KEY:  
 R/A = RIGHT ANGLE PIN-THROUGH-HOLE  
 SMT-STG = STAGGERED SURFACE MOUNT  
 SMT-IL = SURFACE MOUNT IN-LINE (SINGLE ROW)
- ③ X = PUSHROD LENGTH FROM END OF GUIDE RAIL WHEN CARD INSERTED = C = 13.0mm (LENGTH CURRENTLY TOOLED)  
 Y = PUSHROD COLOR = A = BLACK (COLOR CURRENTLY AVAILABLE)  
 X AND Y DESIGNATE THE PUSHROD. THEY MUST BE THE SAME LETTER IN THE EJECT MECHANISM AND ASSEMBLY PART NUMBERS.  
 HERE IS AN EXAMPLE: MECHANISM 92192-00CA IS USED IN ASSEMBLY 71271-000CALF
- ④ IF LEAD FREE P/N.THE HOUSING WILL WITHSTAND EXPOSURE TO 260°C PEAK TEMPERATURE FOR 10 SECONDS IN A WAVE SOLDER APPLICATION WITH A 1.00MM MINIMUM THICK CIRCUIT BOARD.
- ⑤ IF LEAD FREE P/N.THE PRODUCT MEETS EUROPEAN UNION DIRECTIVES AND OTHER COUNTRY REGULATIONS AS DISCRIBLED IN GS-22-008
- ⑥ LEAD FREE P/N PACKAGING MEETS GS-14-920 SPECIFICATION

- ⑦ ADD "H" TO PART NUMBER FOR OPTIONAL HOLD DOWN (2 PER ASSEMBLY IN EJECT MECHANISM).



8 PACKAGING SPECIFICATION: GS-14-341

mat'l. code				tolerances unless otherwise specified				CUSTOMER COPY		 www.fciconnect.com	
ltr	ecn no	dr	date	linear	.X±.3			projection	title		
D					.XX±.13				68 POS EJECT HEADER ASSEMBLY WITH THREADED INSERTS		
					.XXX±.051				product family MCS code -		
				angles	0° ±2'			 MM	size dwg no		
				dr	S.ROYER	8/30/95	sheet 3 of				
				enrg	D.BRANN	8/30/95					
				chr	D.BRANN	8/30/95					
				appd	D.BRANN	8/30/95	scale	1:1	A4	71271	
sheet index	revision sheet										

Tous droits strictement reserves. Reproduction ou communication a des tiers interdite sous quelque forme que ce soit sans autorisation ecrite du proprietaire. Propriete de c FCI. Droits de reproduction FCI.

All rights strictly reserved. Reproduction or issue to third parties in any form whatever is not permitted without written authority from the proprietor. Property of FCI. Copyright FCI.